



City of Grand Island

Tuesday, December 22, 2020

Council Session

Item G-16

#2020-342 - Approving Acquisition of Drainage Easements in Crane Valley and Crane Valley Seventh Subdivisions- 3645 W 13th Street (Concord Investments, LLC; Parcel No. 400150174 & 400416182)

This item relates to the aforementioned Public Hearing item E-5.

Staff Contact: John Collins, P.E. - Public Works Director

RESOLUTION 2020-342

WHEREAS, public drainage easements are required by the City of Grand Island, from Concord Investments, LLC in Crane Valley and Crane Valley Seventh Subdivisions, City of Grand Island, Hall County, Nebraska and more particularly described as follows:

BEGINNING AT THE NORTHEAST CORNER OF LOT 1, CRANE VALLEY SEVENTH SUBDIVISION; THENCE S89°13'58"W, ALONG THE NORTH LINE OF SAID LOT 1, A DISTANCE OF 56.33 FEET; THENCE N22°38'07"W A DISTANCE OF 145.57 FEET; THENCE S88°23'34"W A DISTANCE OF 200.11 FEET TO A POINT ON THE WEST LINE OF BLOCK 1, CRANE VALLEY SUBDIVISION; THENCE N01°40'53"W ALONG THE WEST LINE OF SAID BLOCK A, CRANE VALLEY SUBDIVISION, A DISTANCE OF 35.00 FEET; THENCE N88°23'34"E A DISTANCE OF 221.65 FEET TO A POINT ON THE EAST LINE OF BLOCK A, CRANE VALLEY SUBDIVISION; THENCE S28°29'38"E, ALONG THE EAST LINE OF SAID BLOCK A, A DISTANCE OF 192.52 FEET TO THE POINT OF BEGINNING. SAID DRAINAGE EASEMENT CONTAINS A CALCULATED AREA OF 14,554.63 SQUARE FEET OR 0.334 ACRES MORE OR LESS.

and

BEGINNING AT THE SOUTHEAST CORNER OF OUTLOT A, CRANE VALLEY SEVENTH SUBDIVISION; THENCE S89°15'06"W, ALONG THE SOUTH LINE OF SAID OUTLOT A, A DISTANCE OF 15.06 FEET; THENCE N46°17'40"W A DISTANCE OF 54.57 FEET; THENCE N28°30'21"W A DISTANCE OF 289.80 FEET; THENCE N40°59'17"W A DISTANCE OF 92.95 FEET; THENCE N23°15'42"W A DISTANCE OF 87.66 FEET TO A POINT ON THE EAST LINE OF LOT 1, CRANE VALLEY SEVENTH SUBDIVISION; THENCE N01°37'57"W, ALONG THE EAST LINE OF SAID LOT 1, A DISTANCE OF 93.09 FEET TO THE NORTH CORNER OF SAID OUTLOT A; THENCE S28°29'38"E, ALONG THE EAST LINE OF SAID OUTLOT A, A DISTANCE OF 393.41 FEET; THENCE S28°31'40"E, ALONG SAID EAST LINE OF SAID OUTLOT A, A DISTANCE OF 216.45 FEET TO THE POINT OF BEGINNING. SAID DRAINAGE EASEMENT CONTAINS A CALCULATED AREA OF 19,245.45 SQUARE FEET OR 0.441 ACRES MORE OR LESS.

NOW, THEREFORE, BE IT RESOLVED BY THE MAYOR AND COUNCIL OF THE CITY OF GRAND ISLAND, NEBRASKA, that the City of Grand Island be, and hereby is, authorized to acquire such public easements from the property owner on the above described tracts of land.

- - -

Adopted by the City Council of the City of Grand Island, Nebraska, December 22, 2020.

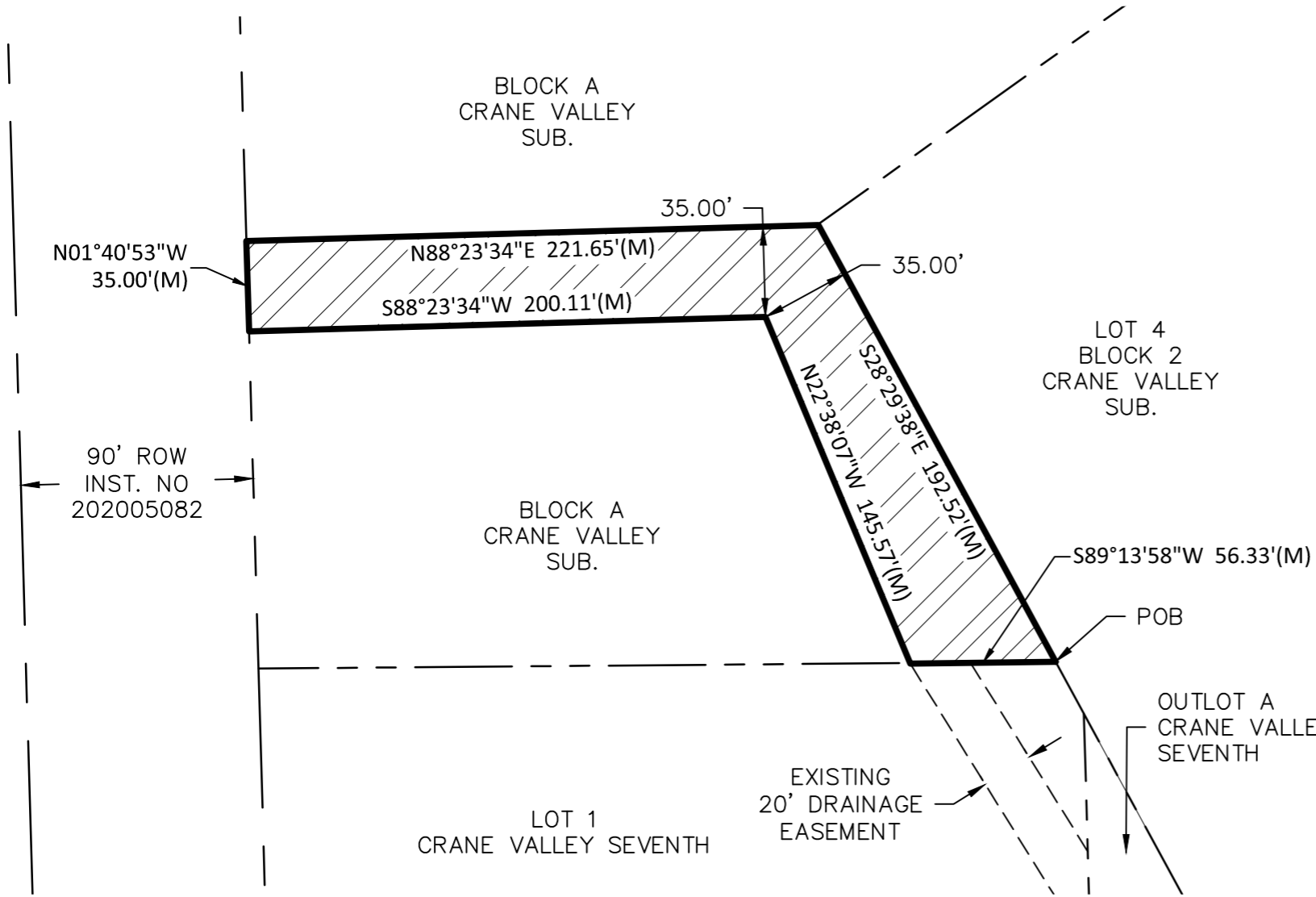
Roger G. Steele, Mayor

Attest:

RaNae Edwards, City Clerk

Approved as to Form	☐ _____
December 18, 2020	☐ City Attorney

DWG: F:\2019\3001-3500\019-3120\40-Design\Exhibits\EASEMENT EXHIBIT_V_XHIBIT_DRAINAGE EASEMENT 1.dwg
 USER: slorgsine
 DATE: Dec 14, 2020 10:59am
 XREFS:



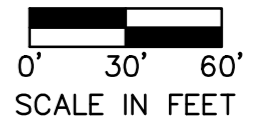
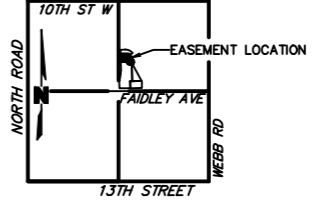
DRAINAGE EASEMENT DESCRIPTION:

A DRAINAGE EASEMENT LOCATED IN PART OF BLOCK A, CRANE VALLEY SUBDIVISION IN THE CITY OF GRAND ISLAND, HALL COUNTY NEBRASKA, AND MORE PARTICULARLY DESCRIBED AS FOLLOWS;

BEGINNING AT THE NORTHEAST CORNER OF LOT 1, CRANE VALLEY SEVENTH SUBDIVISION; THENCE S89°13'58"W, ALONG THE NORTH LINE OF SAID LOT 1, A DISTANCE OF 56.33 FEET; THENCE N22°38'07"W A DISTANCE OF 145.57 FEET; THENCE S88°23'34"W A DISTANCE OF 200.11 FEET TO A POINT ON THE WEST LINE OF BLOCK A, CRANE VALLEY SUBDIVISION; THENCE N01°40'53"W ALONG THE WEST LINE OF SAID BLOCK A, CRANE VALLEY SUBDIVISION, A DISTANCE OF 35.00 FEET; THENCE N88°23'34"E A DISTANCE OF 221.65 FEET TO A POINT ON THE EAST LINE OF BLOCK A, CRANE VALLEY SUBDIVISION; THENCE S28°29'38"E, ALONG THE EAST LINE OF SAID BLOCK A, A DISTANCE OF 192.52 FEET TO THE POINT OF BEGINNING SAID DRAINAGE EASEMENT CONTAINS A CALCULATED AREA OF 14,554.63 SQUARE FEET OR 0.334 ACRES MORE OR LESS.

LOCATION MAP

SEC. 13-T11N-R10W
NOT TO SCALE



LEGEND

- SECTION LINE
- ROW LINE
- EXISTING EASEMENT LINE
- PROPERTY LINE
- DRAINAGE EASEMENT AREA

PROJECT NO:	019-3120
DRAWN BY:	SDL
DATE:	12-6-2020

DRAINAGE EASEMENT
Council Session - 12/22/2020



201 East 2nd Street
Grand Island, NE 68801
TEL 308.384.8750

EXHIBIT
1 Page 3 / 4

DWG: F:\2019\3001-3500\019-3120\40-Design\Exhibits\EASEMENT EXHIBIT\V_XHIBIT_DRAINAGE EASEMENT 1.dwg
 USER: slongsine
 DATE: Dec 14, 2020 10:59am
 XREFS:

90' ROW
INST NO
202005082

BLOCK A
CRANE VALLEY SUB.

LOT 4
BLOCK 2
CRANE VALLEY
SUB.

EXISTING
20' DRAINAGE
EASEMENT

N01°37'57"W 93.09'(M)

EXISTING
20' UTILITY
EASEMENT

N23°15'42"W 87.66'(M)

LOT 1
CRANE VALLEY SEVENTH

N40°59'17"W 92.95'(M)

LOT 3
BLOCK 2
CRANE VALLEY
SUB.

S28°29'38"E
393.41'(M)

50'

30'

LOT 2
BLOCK 2
CRANE VALLEY
SUB.

OUTLOT A
CRANE VALLEY
SEVENTH

N28°30'21"W 289.80'(M)
S28°31'40"E 216.45'(M)

30'

N46°17'40"W 54.57'(M)

POB

S89°15'06"W 15.06'(M)

LOT 2
CRANE VALLEY SIXTH

LOT 1
CRANE VALLEY
SIXTH

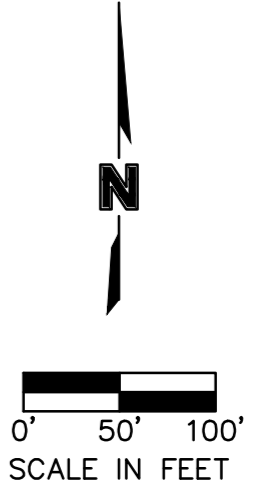
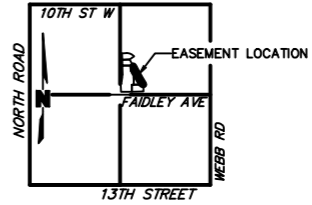
EXISTING
EASEMENT

DRAINAGE EASEMENT DESCRIPTION:

A DRAINAGE EASEMENT LOCATED IN PART OF OUTLOT A, CRANE VALLEY SEVENTH SUBDIVISION IN THE CITY OF GRAND ISLAND, HALL COUNTY NEBRASKA, AND MORE PARTICULARLY DESCRIBED AS FOLLOWS;

BEGINNING AT THE SOUTHEAST CORNER OF OUTLOT A, CRANE VALLEY SEVENTH SUBDIVISION; THENCE S89°15'06"W, ALONG THE SOUTH LINE OF SAID OUTLOT A, A DISTANCE OF 15.06 FEET; THENCE N46°17'40"W A DISTANCE OF 54.57 FEET; THENCE N28°30'21"W A DISTANCE OF 289.80 FEET; THENCE N40°59'17"W A DISTANCE OF 92.95 FEET; THENCE N23°15'42"W A DISTANCE OF 87.66 FEET TO A POINT ON THE EAST LINE OF LOT 1, CRANE VALLEY SEVENTH SUBDIVISION; THENCE N01°37'57"W, ALONG THE EAST LINE OF SAID LOT 1, A DISTANCE OF 93.09 FEET TO THE NORTH CORNER OF SAID OUTLOT A; THENCE S28°29'38"E, ALONG THE EAST LINE OF SAID OUTLOT A, A DISTANCE OF 393.41 FEET; THENCE S28°31'40"E, ALONG SAID EAST LINE OF SAID OUTLOT A, A DISTANCE OF 216.45 FEET TO THE POINT OF BEGINNING. SAID DRAINAGE EASEMENT CONTAINS A CALCULATED AREA OF 19,245.45 SQUARE FEET OR 0.441 ACRES MORE OR LESS.

LOCATION MAP
SEC. 13-T11N-R10W
NOT TO SCALE



LEGEND

- SECTION LINE
- - - - - ROW LINE
- - - - - EXISTING EASEMENT LINE
- - - - - PROPERTY LINE
- ▨ DRAINAGE EASEMENT AREA

PROJECT NO: 019-3120
DRAWN BY: SDL
DATE: 12-6-2020

DRAINAGE EASEMENT
Council Session - 12/22/2020



201 East 2nd Street
Grand Island, NE 68801
TEL 308.384.8750

EXHIBIT
2 Page 4 / 4