



# City of Grand Island

Tuesday, October 27, 2020

Council Session - Updated

## Item G-11

**#2020-268 - Approving Re-established Tap Fees for Subdivided Lots in Bosselville Fifth Subdivision- Sanitary Sewer District No. 530T**

*This item relates to the aforementioned Board of Equalization item D-1.*

Staff Contact: John Collins, P.E. - Public Works Director

RESOLUTION NO. 2020-268

BE IT RESOLVED BY THE MAYOR AND COUNCIL OF THE CITY OF GRAND ISLAND, NEBRASKA, that the special benefits as determined by Resolution No. 2020-BE-7 shall not be levied as special assessments but shall be certified by this resolution to the Register of Deeds, Hall County, Nebraska, pursuant to Section 16-6,103 R.R.S. 1943. A connection fee in the amount of the benefit identified below accruing to each property in the district shall be paid to the City of Grand Island prior to the time such property becomes connected to the sanitary sewer main. No property benefited as determined by this resolution shall be connected to the sanitary sewer main until the connection fee is paid. The connection fees collected shall be paid into the fund from which construction costs were made to replenish such fund for the construction costs.

According to the front foot and area of the respective lots, tracts, and real estate within such Sanitary Sewer District No. 530T, such benefits are the sums set opposite the descriptions as follows:

**Sanitary Sewer District No. 530T – Tap Fees**

Parcel #	Owner	Legal	Sub-Total	Tap Fee Previously Paid	Tap Fee Owed
400217198	Larry J & Karen L Knuth	ALDA TWP PT NW 1/4 NE 1/4 12-10-10 39 AC	\$ 7,379.12	\$ -	\$ 7,379.12
400217201	Larry J & Karen L Knuth	ALDA TWP PT NE 1/4 NW 1/4 NE 1/4 12-10-10 1 AC	\$ 184.32	\$ -	\$ 184.32
400217244	Jim C & Kathy L Rathman	ALDA TWP PT NE 1/4 NW 1/4 12-10-10 40 AC	\$ 6,695.75	\$ -	\$ 6,695.75
400495510	Jim C & Kathy L Rathman	ALDA TWP SE 1/4 NW 1/4 & NE 1/4 SW 1/4 12-10-10 80 AC	\$ 15,227.41	\$ -	\$ 15,227.41
400217279	Arthur P & Geraldine Stelk Living Rev Trust	ALDA TWP N 55 AC W 1/2 NW 1/4 12-10-10 55 AC	\$ 9,234.59	\$ -	\$ 9,234.59
400217236	Lawney L Rathman Trustee	ALDA TWP XC 5.37 AC STATE SE 1/4 NE 1/4 12-10-10 34.63 AC	\$ 215,084.34	\$ -	\$ 215,084.34
400217228	Lawney L Rathman Trustee	ALDA TWP SW 1/4 NE 1/4 12-10-10 40 AC	\$ 18,023.81	\$ -	\$ 18,023.81

Approved as to Form    ✕ \_\_\_\_\_  
 October 26, 2020       ✕ City Attorney

RESOLUTION NO. 2020-268 (Cont.)

400217309	Lawney L Rathman Trustee	ALDA TWP XC 13.84 AC STATE E 1/2 SE 1/4 12-10-10 66.16 AC	\$ 405,092.79	\$ -	\$ 405,092.79
400217341	Lawney L Rathman Trustee	ALDA TWP S 30 AC NW 1/4 SE 1/4 2-10-10 30 AC	\$ 14,667.61	\$ -	\$ 14,667.61
400217295	Lawney L Rathman Trustee	ALDA TWP PT N 1/2 N 1/2 NW 1/4 SE 1/4 12-10-10 9.50 AC	\$ 3,895.55	\$ -	\$ 3,895.55
400217252	Norman Niel & Shirley Stelk	ALDA TWP S 25 AC W 1/2 NW 1/4 12-10-10 25 AC	\$ 4,015.16	\$ -	\$ 4,015.16
400217260	Norman Niel & Shirley Stelk	ALDA TWP W 1/2 SW 1/4 12-10-10 80 AC	\$ 13,388.36	\$ -	\$ 13,388.36
400217325	Curt & Christine Smith	ALDA TWP PT E 1/2 E 1/2 SW 1/4 SE 1/4 12-10-10 9 AC	\$ 4,171.56	\$ -	\$ 4,171.56
400217368	Curt & Christine Smith	ALDA TWP PT SW 1/4 SE 1/4 132' X 300' 12-10-10 1 AC	\$ 348.04	\$ -	\$ 348.04
400217317	Bence Family, LLC c/o Arlyn Uhrmacher Mngr	ALDA TWP PT SW 1/4 SE 1/4 12-10-10 30 AC	\$ 13,191.01	\$ -	\$ 13,191.01
400217287	Bence Family, LLC c/o Arlyn Uhrmacher Mngr	ALDA TWP SE 1/4 SW 1/4 12-10-10 40 AC	\$ 7,606.74	\$ -	\$ 7,606.74
400217376	Kirby Kay Smith	ALDA TWP PT NE 1/4 NE 1/4 XC 5.57 AC STATE 13-10-10 18.04 AC	\$ 124,507.34	\$ -	\$ 124,507.34
400389657	Kirby Kay Smith	ALDA TWP PT N 1/2 NE 1/4 13-10-10 59.27 AC	\$ 127,294.57	\$ -	\$ 127,294.57
400217449	Jan Marie Amundson	ALDA TWP AMUNDSON SUB LT 1	\$ 770.75	\$ -	\$ 770.75
400217392	K Diane Bockmann Trustee	ALDA TWP PT SE 1/4 NE 1/4 13-10-10 1 AC	\$ 14,654.01	\$ -	\$ 14,654.01
400217384	K Diane Bockmann Trustee	ALDA TWP PT S 1/2 NE 1/4 & PT SE 1/4 XC 13.81 AC STATE 13-10-10 148.75 AC	\$ 483,464.88	\$ -	\$ 483,464.88
400418926	Bosselman, Inc.	Lot 1, Bosselville Fifth Subdivision (5.281 ac)	\$ 40,612.97	\$ -	\$ 40,612.97
400418928	Bosselman, Inc.	Lot 2, Bosselville Fifth Subdivision (11.052 ac)	\$ 84,994.24	\$ -	\$ 84,994.24
400418930	Bosselman, Inc.	Lot 3, Bosselville Fifth Subdivision (5.521 ac)	\$ 42,458.67	\$ -	\$ 42,458.67
400406772	Bosselman, Inc.	Outlot A, Block 2, Bosselville Fifth Sub (9.920 ac)	\$ 11,395.10	\$ -	\$ 11,395.10
400418924	Bosselman, Inc.	Outlot B, Boselville Fifth Subdivision (4.412)	\$ 0	\$ -	\$ 0
400217503	Bosselman, Inc.	NE ¼, SW ¼, Se ¼, Alda Twp, 13-10-10- 10 AC	\$ 10,748.22	\$ -	\$ 10,748.22
400406713	Bosselman, Inc.	ALDA TWP BOSELVILLE SUB LT 2 BLK 2	\$ 939.23	\$ -	\$ 939.23
400406721	Bosselman, Inc.	ALDA TWP BOSELVILLE SUB LT 3 BLK 2	\$ 1,206.57	\$ -	\$ 1,206.57
400406748	Bosselman, Inc.	ALDA TWP BOSELVILLE SUB LT 4 BLK 2	\$ 1,243.01	\$ -	\$ 1,243.01
400406756	Bosselman, Inc.	ALDA TWP BOSELVILLE SUB LT 5 BLK 2	\$ 1,027.24	\$ -	\$ 1,027.24
400406764	Bosselman, Inc.	ALDA TWP BOSELVILLE SUB LT 6 BLK 2	\$ 1,173.89	\$ -	\$ 1,173.89

RESOLUTION NO. 2020-268 (Cont.)

400406683	Bosselman, Inc.	ALDA TWP BOSELVILLE SUB LT 10 BLK 1	\$ 6,852.31	\$ -	\$ 6,852.31
400406675	Bosselman, Inc.	ALDA TWP BOSELVILLE SUB LT 9 BLK 1	\$ 6,221.20	\$ -	\$ 6,221.20
400406659	Bosselman, Inc.	ALDA TWP BOSELVILLE SUB LT 8 BLK 1	\$ 6,196.72	\$ -	\$ 6,196.72
400406640	Bosselman, Inc.	ALDA TWP BOSELVILLE SUB LT 7 BLK 1	\$ 9,860.35	\$ -	\$ 9,860.35
400406691	Bosselman, Inc.	ALDA TWP BOSELVILLE SUB OUTLOT 1 BLK 1	\$ 272.57	\$ -	\$ 272.57
400406705	Bosselman Pump & Pantry, Inc.	ALDA TWP BOSELVILLE SUB LT 1 BLK 2	\$ 1,012.13	\$ -	\$ 1,012.13
400406632	Bosselman Motels, Inc.	ALDA TWP BOSELVILLE SECOND SUB LT 2	\$ 6,593.41	\$ -	\$ 6,593.41
400406624	Bosselman Motels, Inc.	ALDA TWP BOSELVILLE SECOND SUB LT 1	\$ 16,672.44	\$ -	\$ 16,672.44
400406616	Bosselman Properties, Inc. c/o Fred A Bosselman	ALDA TWP BOSELVILLE SUB LT 4 BLK 1	\$ 6,335.52	\$ -	\$ 6,335.52
400218437	Boss Truck Shops, Inc.	ALDA TWP BOSELVILLE THIRD SUB LT 2~	\$ 19,629.81	\$ -	\$ 19,629.81
400406608	Bosselman Energy, Inc. c/o Travis Hasselmann Cont.	ALDA TWP BOSELVILLE THIRD SUB LT 3~	\$ 38,161.69	\$ -	\$ 38,161.69
<del>400448173</del>	<del>Bosselman Travel Center, Inc.</del>	<del>ALDA TWP BOSELVILLE THIRD SUB LT 1~</del>	<del>\$ 172,627.14</del>	<del>\$ -</del>	<del>\$ 172,627.14</del>
400448174	Bosselman Travel Centers, Inc.	ALDA TWP BOSELVILLE FOURTH SUB LT 1- 10.93 AC	\$ 73,785.26	\$ -	\$ 73,785.26
400448173	Bosselman Travel Centers, Inc.	ALDA TWP BOSELVILLE FOURTH SUB LT 2- 14.65 AC	\$ 98,841.88	\$ -	\$ 98,841.88
400217511	Darrell R & Judith I Sutter	ALDA TWP NW 1/4 SW 1/4 SE 1/4 & PT SW 1/4 SW 1/4 SE 1/4 13-10-10 10.30 AC	\$ 11,984.03	\$ -	\$ 11,984.03
400217465	Dale L & Marilyn Bockman	ALDA TWP SE 1/4 SW 1/4 13-10-10 40 AC	\$ 34,360.28	\$ -	\$ 34,360.28
400218445	Dale & Marilyn Bockman	ALDA TWP PT LT 2 & ALL LT 3 24- 10-10 100.33 AC	\$ 87,062.07	\$ -	\$ 87,062.07
400209276	Kenneth Clausen c/o Robert Clausen	WASHINGTON TWP XC 2.37 AC HWY SW 1/4 NW 1/4 8-10-9 37.63 AC	\$ 5,965.52	\$ -	\$ 5,965.52
400209330	Kenneth Clausen c/o Robert Clausen	WASHINGTON TWP PT W 1/2 SW 1/4 XC 8.32 AC HWY XC 2.28 AC HWY 8-10-9 67.40 AC	\$ 12,711.77	\$ -	\$ 12,711.77
400460432	Kenneth Clausen c/o Robert Clausen	WASH TWP RIVER SUB LT 1	\$ 272.28	\$ -	\$ 272.28
400209322	Robert H Clausen Life Estate, Kenneth Clausen	WASHINGTON TWP PT E 1/2 SW 1/4 XC .06 AC HWY & N 16.5' OF NW 1/4 SW 1/4 8-10-9 80.44 AC	\$ 14,224.16	\$ -	\$ 14,224.16
400209551	Carline A Denman Trustee	WASHINGTON TWP XC 2 AC PT NW 1/4 NW 1/4 XC 8.54 AC HWY W 1/2 LT 4 & W 1/2 SW 1/4 NW 1/4 XC .33 AC HWY 17-10-9 70.25 AC	\$ 282,385.26	\$ -	\$ 282,385.26

RESOLUTION NO. 2020-268 (Cont.)

400460017	Kuehner Farms, Inc.	WASHINGTON TWP PT NE 1/4 NW 1/4 100' X 300' 17-10-9 .69 AC	\$ 18,218.65	\$ -	\$ 18,218.65
400209543	Kuehner Farms, Inc.	WASHINGTON TWP PT NE 1/4 NW 1/4 & E 1/2 LT 4 & E 1/2 SW 1/4 NW 1/4 17-10-9 84 AC	\$ 247,769.65	\$ -	\$ 247,769.65
400209535	Kuehner Farms, Inc. c/o D Janssen	WASHINGTON TWP PT LT 3 17-10-9 55 AC	\$ 26,535.29	\$ -	\$ 26,535.29
400210703	Design Flite, Inc.	WASHINGTON TWP FIRESIDE INTERSTATE PLAZA SECOND SUB LT 1	\$ 22,617.11	\$20,887.75	\$ 1,729.37
<b>TOTALS:</b>			<b>\$2,739,238.21</b>	<b>\$20,887.75</b>	<b>\$2,718,350.47</b>

---

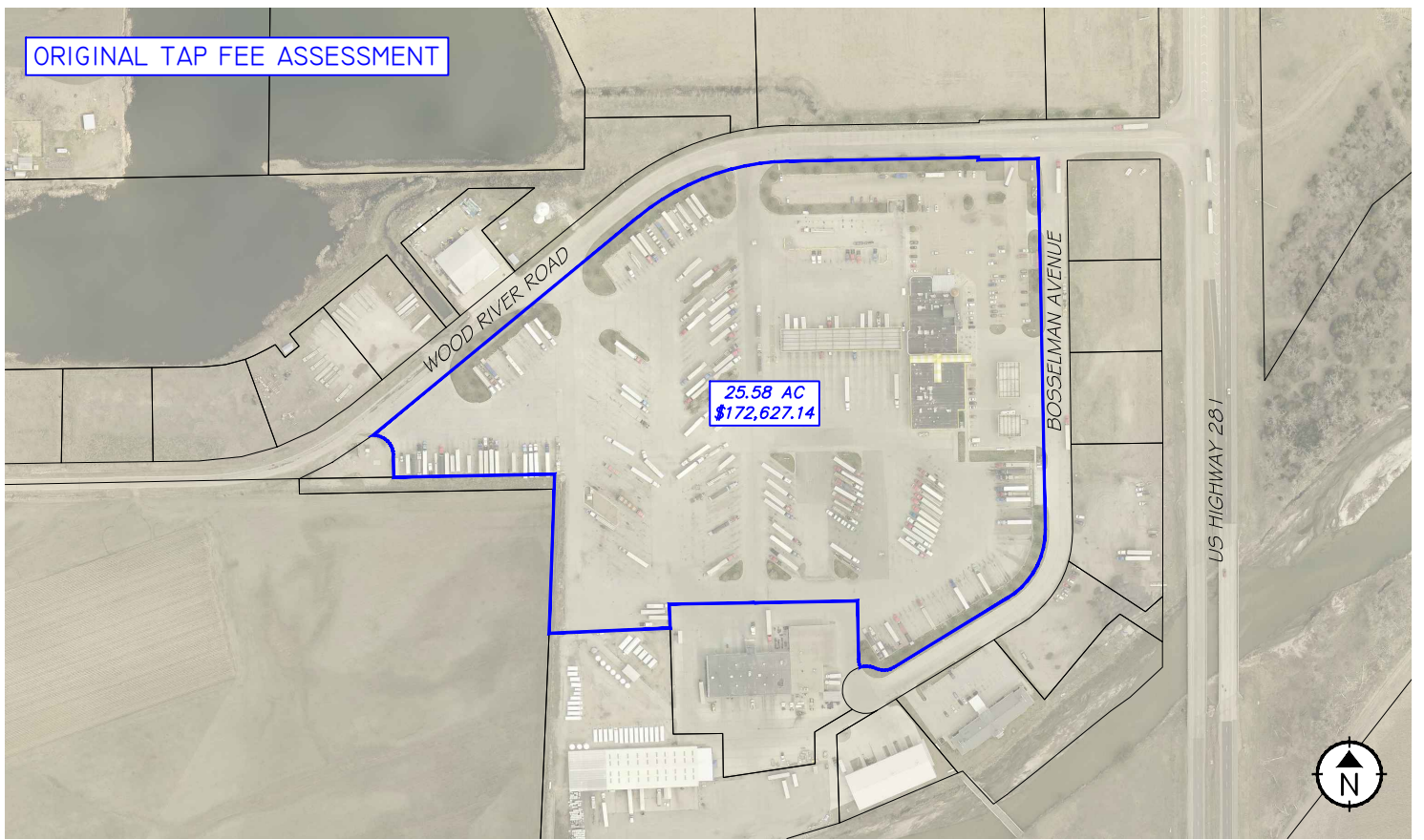
Adopted by the City Council of the City of Grand Island, Nebraska, October 27, 2020.

\_\_\_\_\_  
Roger G. Steele, Mayor

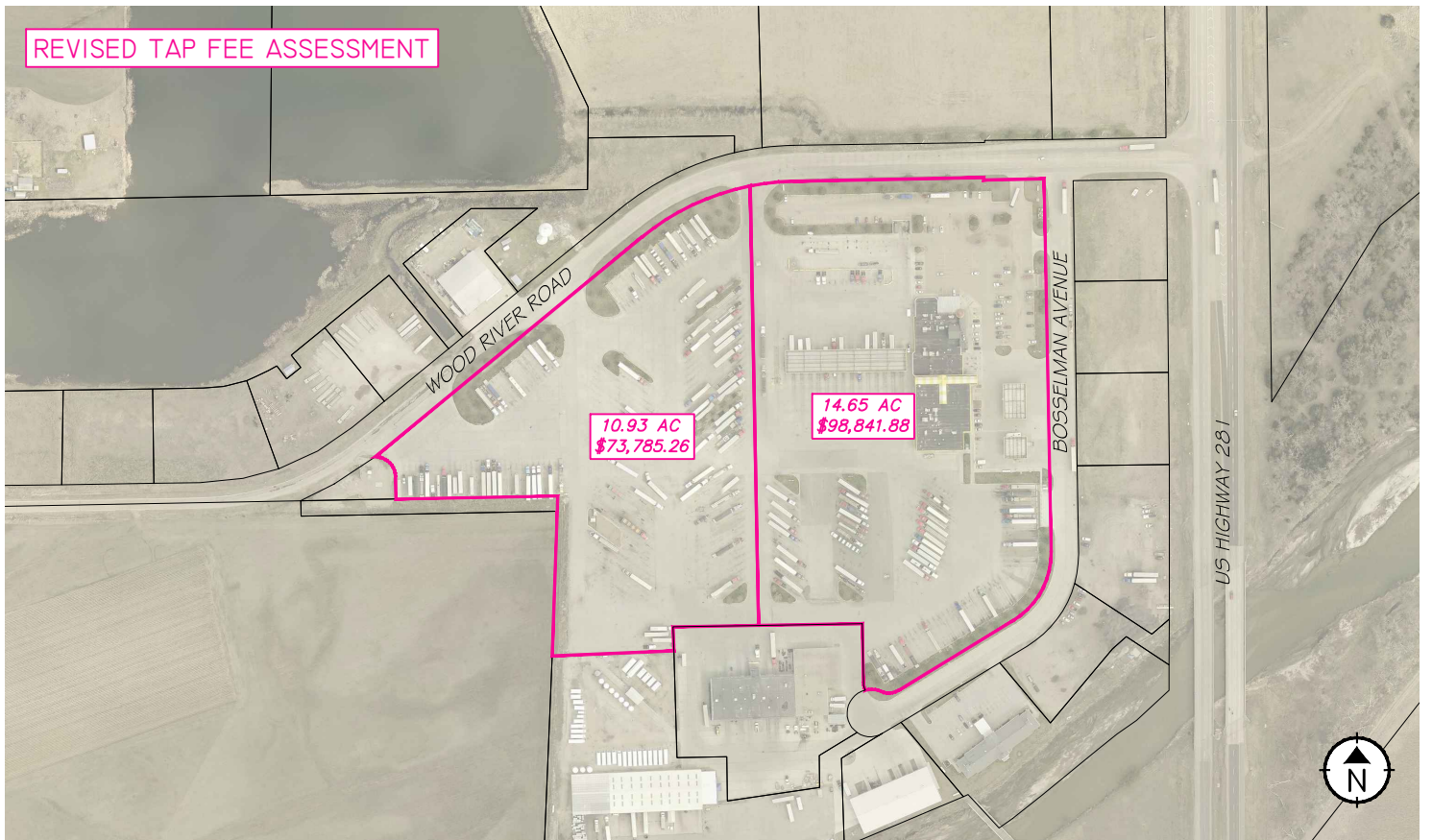
Attest:

\_\_\_\_\_  
RaNae Edwards, City Clerk

ORIGINAL TAP FEE ASSESSMENT



REVISED TAP FEE ASSESSMENT



SANITARY SEWER DISTRICT 530T TAP FEE REDISTRIBUTION  
BOSSELVILLE FOURTH SUBDIVISION  
GRAND ISLAND, NEBRASKA

