



City of Grand Island

Tuesday, October 13, 2020

Council Session

Item G-12

#2020-250 - Approving Purchase of a Utility Work Machine for the Solid Waste Division of the Public Works Department

Staff Contact: John Collins, P.E. - Public Works Director

Council Agenda Memo

From: Jeff Wattier, Solid Waste Superintendent

Meeting: October 13, 2020

Subject: Approving Purchase of a Utility Work Machine for the Solid Waste Division of the Public Works Department

Presenter(s): John Collins PE, Public Works Director

Background

The Solid Waste Division of the Public Works Department budgeted for a utility work machine to be used in the daily operations of the Solid Waste Division. The approved FY 2021 Solid Waste Division budget includes \$75,000, for this purchase.

Discussion

The Bobcat 5600 utility work machine specifications awarded under State of Nebraska Contract No. 15336OC meet all of the requirements for the Solid Waste Division. This machine will be replace a seventeen year old utility vehicle and litter vacuum for cleaning up litter at the landfill as required by NDEE Title 132 regulations.



Central Nebraska Bobcat of Grand Island, Nebraska submitted a bid in the amount of \$61,414.70. There are sufficient funds for this purchase in Account No. 50530043-85615.

Alternatives

It appears that the Council has the following alternatives concerning the issue at hand. The Council may:

1. Move to approve
2. Refer the issue to a Committee
3. Postpone the issue to future date
4. Take no action on the issue

Recommendation

City Administration recommends that the Council approve the purchase of a Bobcat 5600 utility work machine from Central Nebraska Bobcat of Grand Island, Nebraska in the amount of \$61,414.70.

Sample Motion

Move to approve the resolution.



Bobcat®

Toolcat Utility Work Machines



One Tough Animal®



PICKUP TRUCK

Get there in a pickup ... or get there AND get the job done with the Toolcat™ utility work machine. A pickup can transport passengers, haul cargo and tow a trailer. The Toolcat 5600 does that and more. With towing and cargo box capacities comparable to most half-ton pickups, a hydraulic dump cargo box for easy unloading and a lift arm that utilizes more than 40 easy-to-change attachments, your machine does the work – not you.

COMPACT TRACTOR

A compact tractor and a Toolcat utility work machine can both get the job done, but only one can bring everything you need for the job. Toolcat utility work machines can bring a co-worker, tools and supplies to the jobsite and operate more than 40 front-mounted attachments. The 5610 can also be equipped with optional 3-point hitch, PTO and/or rear-remote hydraulics to operate all of your Category 1 implements. Plus, both the 5610 and 5600 have a top speed of 17.5 mph and four-wheel independent suspension that provides a comfortable ride while increasing traction.

SKID-STEER LOADER

A skid-steer loader, with its numerous attachments and compact size, can do hundreds of jobs. Versatile as it is, it still can't haul material, tow a trailer or carry a passenger. With dozens of interchangeable attachments and great maneuverability, the Toolcat utility work machines have two of the best features of a skid-steer, plus room for a passenger, towing capabilities and a top travel speed of 17.5 mph to get you to and from your job faster.



Why Toolcat machines?



UTILITY VEHICLE

A utility vehicle is a maneuverable way to get a co-worker, materials and supplies around the jobsite. They typically have an approximate 1,000 lb. payload capacity and 1,300 lb. towing capacity – great for a vehicle. But when a machine is what you need, the Toolcat utility work machine's 4,000 lb. towing capacity, lift arm for loading material and running dozens of attachments, and 2,000 lb. cargo box capacity on the 5600 will take your production to the next level and then some.

When you've got plenty to do, versatility is essential. Why slow down to start up another machine? Why take up valuable space with equipment that only gets used occasionally? Why deal with the extra maintenance and costs of multiple machines if you only need one?

The Toolcat utility work machine does many of the jobs you'd do with a pickup truck, compact tractor, utility vehicle or attachment carrier, plus a whole lot more. Add the precise maneuverability of its all-wheel steer, and you have the most versatile worker in your fleet or on your estate.

Want to learn more about the capabilities of a Toolcat utility work machine? Visit Bobcat.com/WhyToolcat

Any Day. Any Job.

Why waste time and money on several machines, each dedicated to only one task, when you don't have to? Maximize your production and return on investment by connecting your Toolcat utility work machine to one of more than 40 front-mounted attachments. Changes take less than a minute – so it's simple to mow in the morning, remove downed trees in the afternoon and dig post holes in the evening. It's an investment you can leverage a different way every day, all year round.

Want to make sure you get the most out of your machine? Purchase the attachments you regularly use, like a mower, so they're there when you need them. For one-time projects, rent the attachments you need, like a stump grinder, from your local Bobcat dealer.

Attachment performance is determined by more than a quick connection. The Toolcat utility work machines have additional features not found in other types of equipment that help increase

attachment productivity – to get the job done faster and easier, save valuable time, and allow you to get more done in a day:

- Lift arm float
- Horsepower management
- Hydrostatic drive
- Variable flow hydraulics
- Fingertip auxiliary control
- Work mode
- Dual direction detent
- Cruise control
- High-flow hydraulics
- Attachment control kit

*Want to learn more about these features?
Visit Bobcat.com/ToolcatAttachments*





Joystick and Attachment Control Kit
The ultimate balance of control and simplicity:

Command the attachment and make on-the-fly adjustments with a simple-to-

operate joystick and effortless fingertip auxiliary control. Secondary attachment functions, like angle adjustments on the broom, blade or soil conditioner, are at your fingertips with the optional attachment control kit.



Pressure Relief Quick Couplers Clean, quick attachment changes

time after time: This unique design releases trapped line pressure and provides easier hydraulic attachment hookup.

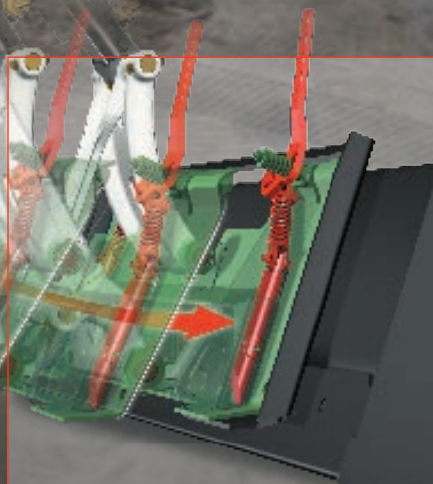


Optional High-Flow Hydraulics

Need more attachment power? High flow provides additional hydraulic power for maximum performance during tough jobs. Use it with attachments like the Bobcat® snowblower to throw snow farther and higher and the stump grinder to grind stumps faster.

Prove yourself on the job with these Bobcat attachments:

- | | |
|-------------------------|-----------------------|
| 3-Point Hitch Adapter | Pallet fork, standard |
| Angle broom | Rebar bender |
| Auger | Rock bucket |
| Bale fork | Scraper |
| Box blade | Seeder |
| Brushcat™ rotary cutter | Snow blade |
| Bucket | Snow pusher |
| Chipper | Snow v-blade |
| Combination bucket | Snowblower |
| Dozer blade | Sod layer |
| Dumping hopper | Soil conditioner |
| Flail cutter | Spreader |
| Grader | Stump grinder |
| Grapple, industrial | Sweeper |
| Grapple, utility | Tiller |
| Landplane | Tilt-Tatch™ device |
| Landscape rake | Trencher |
| Mower | Utility fork |
| Pallet fork, hydraulic | |



One person can change attachments in less than a minute. With the standard Bob-Tach® attachment mounting system, attachment hookup is quick and easy.



With the optional Power Bob-Tach system, you can change non-hydraulic attachments without leaving the comfort of your cab. Just line up the attachment and flip the switch.



Heads or Tails

Revolutionize your attachment capabilities with the Toolcat 5610 utility work machine. With the ability to use front-mounted attachments and rear-mounted implements, buildings and grounds crews, landscapers, agriculture producers, property owners and others can reduce the time spent stopping to change attachments and get more done in less time.

* 1,500-pound ROC if machine is equipped with 3-point.

Like the 5600, the Toolcat 5610 is also a compact loader and attachment carrier, with a front lift arm that has a rated operating capacity (ROC) of 1,500 pounds.* To increase productivity, you can add the available 3-point hitch and PTO, and buy, rent or use existing Category 1, 3-point implements up to 1,775 pounds to do hundreds of different tasks. Add optional rear remote hydraulics to adjust and control individual implement functions.



Check out more features of the Toolcat 5610 at Bobcat.com/5610tc



The Plot Thickens

With the right combination of attachments and implements, you can complete a single job – like preparing a food plot – in a single afternoon. Mount a grapple up front and add a rotary cutter or tine rake to the rear – and clear your plot site from the front and behind. When you're ready to break ground, amend soil with fertilizer or manure, and prepare for planting, switch to a front-mounted tiller or a 3-point hitch tiller. Attach a seeder to finish the job. The only reason to leave the controls of your Toolcat 5610 is to switch your attachments.



Ultimate Versatility

What kind of work do you need to do? Only the Toolcat 5610 provides the ability to add or subtract key options – so you get the right machine for the type of work you do. Many standard features offer additional flexibility for the work you do. Two cargo bins accommodate tools and supplies for the job – up to 50 pounds each. A standard 2-inch receiver hitch allows for a wide variety of towing and transport possibilities. The raised cooling package increases your cooling efficiency. Plus, the 5610 has all of the front-mounted attachment capabilities and the same comfortable cab as the

Toolcat 5600. If you want to increase your capabilities, the 5610 offers three optional rear-mounted kits that will help you utilize 3-point hitch implements and increase versatility. With the right combinations of complementary attachments and implements, you can switch instantly from one job to the next – or complete two tasks in one pass.

Use a variety of implements with the Toolcat 5610:

- | | |
|---------------------|-----------------------|
| 3-pt. angle blade | 3-pt. seeder |
| 3-pt. auger | 3-pt. snowblower |
| 3-pt. box blade | 3-pt. soil cultivator |
| 3-pt. finish mower | 3-pt. tiller |
| 3-pt. rotary cutter | 3-pt. tine rake |



How cool is this?

The new, raised cooling package in the 5610 protects the life of your machine components and allows you to run longer and more efficiently. For mowing, the Toolcat 5610's raised cooling really shines. With cooling components located up and away from the mower discharge, you can work longer without stopping to clean the radiator.





Use attachments AND implements. Add the optional 3-point hitch to your Toolcat 5610 to hook up any of your Category 1 implements and maintain the ability to carry front-mounted attachments on the Toolcat lift arm.



powered implements: mowers, snowblowers, augers, tillers and more.

Use powered implements with optional PTO. The 5610's optional PTO is simply activated with a switch in the cab, and it powers your rear-mounted, PTO-



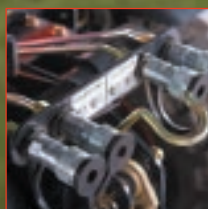
hydraulics with easy-to-reach, easy-to-use, cab-mounted switches. Raise and lower the 3-point hitch with a simple in-cab lever for easy operation.

Simple, in-cab activation and controls. You control the PTO and rear remote



The 3-point hitch depth indicator helps you easily position the implement for the best possible performance. If uneven terrain threatens to slow down your work, the mechanical float feature maintains constant contact with the ground for reliable implement performance when traveling across bumps and dips.

The 3-point hitch depth indicator helps you easily position the implement for the best possible performance. If uneven terrain threatens to slow down your work, the mechanical float feature maintains constant contact with the ground for reliable implement performance when traveling across bumps and dips.



chute or change the angle of an angle blade, you control up to two hydraulic implement functions with optional rear remote hydraulics.

Gain more control with rear remote hydraulics. Gain accuracy and speed when mowing, moving snow, dumping materials and more. Whether you need to adjust a snowblower



maximum production and efficiency, with the easy-to-see, easy-to-read, cab-mounted gauge.

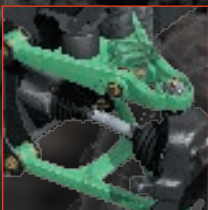
Ensure productive implement performance.

Continuously monitor the rpm of the PTO from the cab, and operate your implement for

Want to learn more about the Toolcat 5610 and its vast range of capabilities? Visit Bobcat.com/5610tc

Four-Wheel Independent

The Toolcat utility work machines are the first machines to offer four-wheel independent suspension. Each wheel travels up and down independently, isolating the frame from changes in the terrain. This keeps the wheels in contact with the ground over bumps and through dips to increase traction. Compare a Toolcat machine to a tractor, other types of loaders and even utility



A-Frame control arms allow each wheel to travel up and down independently of each other and the frame – isolating the machine from changes in the terrain to improve ride and attachment performance.



Suspension Coil
A coil spring at each wheel compresses and expands to help absorb and control up-and-down movement and maximize wheel-to-ground contact and traction.



Shock Front and rear shocks absorb vibrations and help provide a smooth, comfortable ride.

Suspension

vehicles. One of the first things you'll notice is the increase in comfort. It is hard to believe that a tough Toolcat work machine can deliver such a smooth ride. But four-wheel independent suspension doesn't just offer a great ride. With the Toolcat suspension, you can travel at higher speeds in greater comfort – and get the job done faster!

Operator Comfort

- Independent suspension absorbs changes in terrain, providing a more comfortable ride.
- Increased wheel-to-ground contact reduces bounce and vibration.
- Long wheelbase lessens the impact of bumps and dips and evenly distributes the weight of the machine.

Better Attachment Performance

- Frame is isolated from the wheels, lessening movement of the attachment in bumpy terrain.
- Applications that demand steady contact with the ground, such as mowing and snow removal, are more productive.
- Spillage and vibration are reduced when carrying materials.

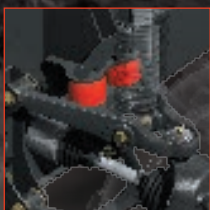
Superior Lifting and Carrying

When maximum lift or payload capacity is reached, suspension stops provide the support needed in the front and rear of the machine to deliver the lift-and-carry performance expected.



When traveling to and from your jobsite or around your ranch, the four-wheel independent suspension provides a comfortable ride – even at the top speed of 17.5 mph.

Want to learn more about the Toolcat suspension? Visit [Bobcat.com/ToolcatIndependentSuspension](https://www.bobcat.com/ToolcatIndependentSuspension)



Suspension Stop
Rubber stops provide support at maximum lift or payload capacity.

Maximum Traction. Minimal



Snow, ice, loose gravel or dirt ... bring 'em on. They can't slow you down in the Toolcat utility work machine. The Toolcat machine's one-of-a-kind drivetrain includes four-wheel drive, horsepower management and hydrostatic traction control – so you never have to back down when the road gets rough.

Disturbance.

Maximize traction with new, advanced hydrostatic traction control (HTC). The first of the many traction-enhancing innovations in Toolcat utility work machines is our exclusive four-wheel drive system. With limited-slip differentials in both the front and the rear, the Toolcat HTC drive system automatically manages the torque split between the high-traction and low-traction tires. If one wheel loses tractive effort, HTC ensures the wheel with the most traction receives the most torque – without the need to engage any locks, buttons or levers.

For the ultimate in off-road traction, an optional enhanced HTC system selectively pulses the brake on low-traction tires, preventing wheel spin and mechanically forcing torque to the tires with the most traction. This process happens automatically, moving you through slippery terrain without any operator input or effort.

Dramatically reduce ground disturbance. Not only does hydrostatic traction control optimize tractive effort, it also provides the confidence to maneuver on turf. Traditional off-road, full-time four-wheel drive systems utilize locking differentials which cause “binding” when turning. This negative feedback increases turf damage. HTC eliminates this four-wheel drive characteristic from the Toolcat drivetrain, minimizing turf tear out when working on grass. Together with four-wheel drive and all-wheel steering, the Toolcat drivetrain provides the perfect balance of excellent traction, smooth turning, minimized tire wear and outstanding turf protection.

Power through your toughest jobs with horsepower management. During an uphill climb, or when you dig into a pile, Bobcat horsepower management automatically increases and decreases pressure in the hydrostatic transmission to sustain engine rpm and maintain optimum attachment performance. That's not all. There are plenty of other features that bring you increased traction, control and ease of operation:

- Hydrostatic drive
- Hydrostatic braking system
- Cruise control
- Shift-on-the-fly 2-Speed option

Want to learn more about these features? Visit Bobcat.com/ToolcatDrivetrain



Hydrostatic traction control works in conjunction with 4WD and all-wheel steer, minimizing turf damage or loss of traction in soft ground conditions.



Yellow – Reduced tractive effort
Green – Tractive effort
Blue – Full tractive effort

Toolcat HTC ensures the wheel with the most traction receives the most torque – without the need to engage any locks, buttons or levers.

Precise Maneuverability

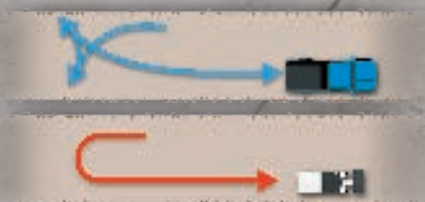
The tighter the area a machine can work in, the less hand labor you have to do. Precise, responsive all-wheel steering makes the Toolcat utility work machine extremely maneuverable and easy on turf. And with its hydraulic power steering, you have nearly effortless control.

Front-wheel steer vehicles and equipment are limited in confined areas such as backyards, between buildings or around trees because of their large turning radius. They have to back up – often several times – to change direction or make the turn. Plus, the rear wheels skid through a tight turn and damage lawns or leave marks on driveways. This is even true of zero-turn mowers. With a Toolcat work machine, you can mow around trees, push snow around tight corners, maneuver through horse corrals and barn stalls, and turn in tight spaces without having to back up.

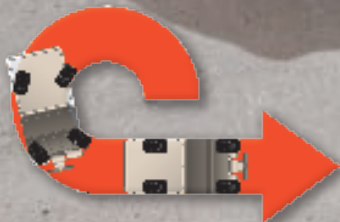
Reduce ground disturbance with all-wheel steer. With some machines, you have to sacrifice ground disturbance to get tight-turning maneuverability. Each wheel of the Toolcat utility work machine moves separately through the turning arc and rolls smoothly through the turn. That means you won't have to spend time re-installing sod or planting grass after the job is done. Different tire options also offer increased ground protection with the right balance of traction. Using all-wheel steer is not recommended when operating 3-point implements on the 5610.

Switch to front-wheel steer whenever you need it. With the Toolcat utility work machine, you get the best of both worlds. Just switch from all-wheel steer to front-wheel steer from the operator's seat for loading onto a trailer or traveling longer distances in either model – or when engaging implements in the 5610.

Want to learn more about Toolcat maneuverability? Visit Bobcat.com/ToolcatAWS



Turn around in smaller spaces without backing up to save time and reduce damage to grass and marks on pavement.



Each wheel of the Toolcat utility work machine moves separately through the turning arc and rolls smoothly through the turn.



Even when it fits, it's often not worth the trouble to take a machine with limited maneuverability into confined working conditions. With a turning diameter of 11.2 feet, the Toolcat utility work machine can do more in tight spaces.

Comfort Cab

Even people without equipment experience are surprised to see how easy our equipment is to operate. With automotive-style controls and an optional heated, air-conditioned cab, the Toolcat utility work machines have the fit, finish and comfort of an automobile.

Bobcat looks at comfort and ease-of-use from your point of view and builds machines accordingly. The panoramic cab offers a clear view of your attachments and surroundings. Everything you need to operate is cleanly laid out, within easy reach and most importantly, simple to operate. The Toolcat utility work machine's simple, responsive joystick provides hassle-free attachment control. A simple switch or lever activates most features.

Want to learn more about the Toolcat comfort cab? Visit Bobcat.com/ToolcatComfortCab



Hydraulic Dump Cargo Box

With the 5600's standard hydraulic dump cargo box, you can quickly unload brush and debris without even leaving the cab.

Easy Entry/Exit

The wide, low door opening allows you to easily step in and out of the machine.

Improved Joystick Controls

The latest Toolcat work machine innovations fit right in your hand. Now you can control attachment operation without letting go of the joystick – the same goes for the windshield wiper. Important machine functions have been moved from the console to your fingertips.

Attachment Controls Convenient, intuitive and ergonomic, new attachment controls located right on the joystick allow you to operate attachments without the need to look away from the work. No searching for buttons or switches. Just use your thumb.

Wiper Button When you're doing tough, dirty jobs, the windshield wiper is a lifesaver. Now you can clear away dust, water and mud without stopping or looking away from the action.

Enclosed Cab with Heat/Air Conditioning Optional fully enclosed cab with heat and air conditioning keeps you comfortable during high heat or bitter cold. The cab air filter provides cleaner air for comfort.



In-Cab 3-Point Hitch Control

The 3-point PTO and rear remote hydraulics are controlled with levers mounted on the console. A smooth, easy-to-reach lever in the cab raises and lowers the 3-point hitch on the 5610 and operates the hydraulic dump box on the 5600.



Cruise Control

Cruise control reduces fatigue during long operation and improves efficiency when spraying weeds or spreading salt or sand. In cruise control, you can speed up or slow down with the push of a button.



Shuttle Shift

Shuttle shift makes changing travel directions a simple task: just forward and reverse; that's it!



Radio/CD Player

Take your favorite music and radio programming with you on the job.







Under the cargo box:

- A** Air cleaner
- B** Radiator
- C** Quick release radiator screen
- D** Battery
- E** Air conditioner condenser
- F** Coolant reservoir
- G** Windshield washer fluid reservoir
- H** Hydraulic oil fill
- I** Hydraulic oil sight gauge
- J** Hydraulic oil filters



5610 Raised Cooling

The Toolcat 5610 features a raised cooling package that takes in cool, clean air from up above the machine – and is located farther away from dust and dirt below the machine. Perfect for high-debris applications like mowing, raised cooling protects your machine and allows you to run longer between cleaning.

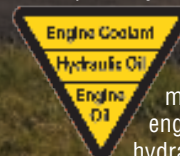


Keyless Start

Stop searching for missing keys and reduce the risk of theft or unauthorized use with optional keyless start.

Battery Rundown Protection

Lights automatically shut off to prevent accidental battery discharge.



Machine Shutdown Protection Feature

To protect your investment, the majority of Bobcat equipment comes standard with automatic shutdown that monitors the machine's engine parameters and hydraulic functions. It will alert the operator and actually shut the machine down – lessening the chance of damage to the engine or hydraulic components.

More Uptime. Less Upkeep.

Thousands of people use Bobcat equipment to make their living and build their reputations. These customers expect performance – day after day in the toughest working conditions – with minimal interruptions. Compact equipment has to be tougher, stronger and easier to maintain than other vehicles. Why? Because when you're not working, you're not making money.

The Toolcat utility work machines are engineered to meet the same standards as the rest of the Bobcat equipment lineup. Many of its components – such as the engine and cooling system – are the same as those found in our legendary loaders and excavators. These components are rigorously

tested in a wide range of applications, including construction, agriculture, military and more.

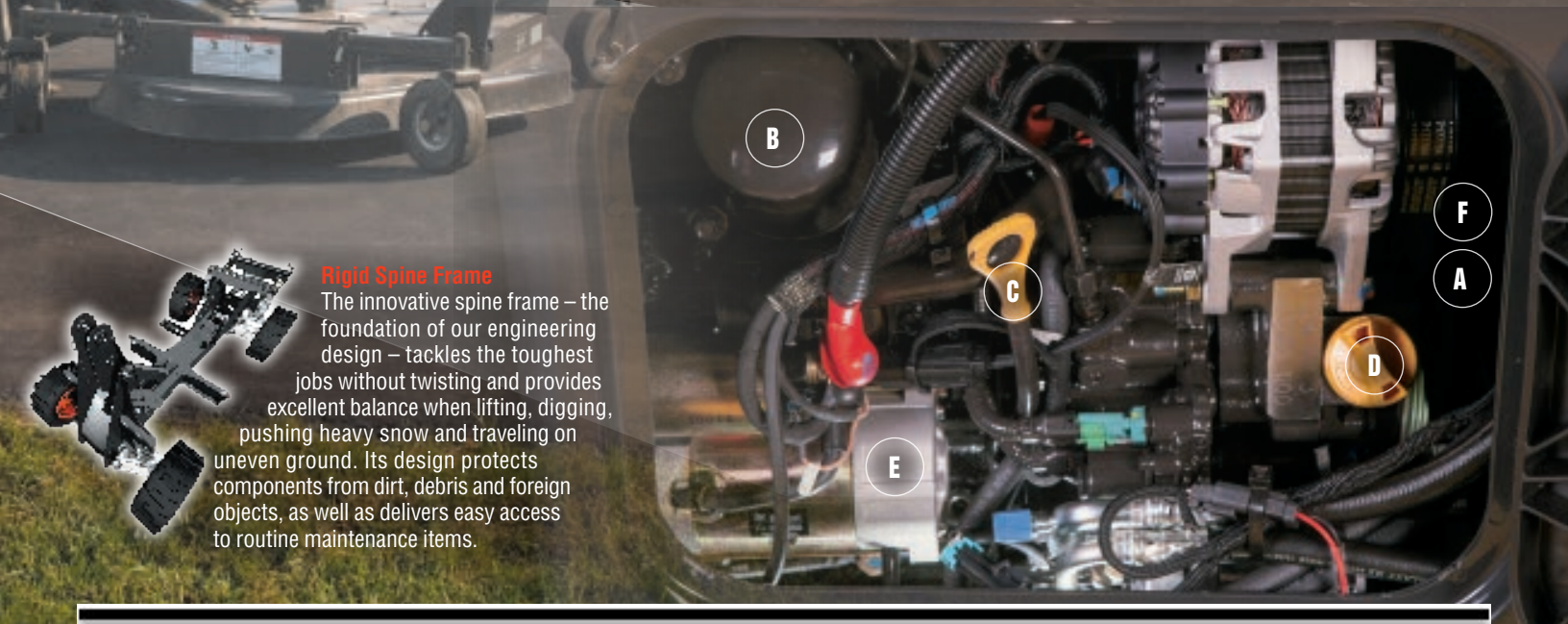
Bobcat designs the durable Toolcat machines – both the 5600 and 5610 – with maintenance points that are easy to find and reach, because when upkeep is quick and easy, maintenance is more likely to get done. That means you'll get peak performance day in and day out for years to come.

Want to learn more about these features? Visit Bobcat.com/ToolcatMaintenance



Behind the side access panel:

- | | |
|------------------------------|--------------------------|
| A Fuel primer | D Engine oil fill |
| B Engine oil filter | E Starter |
| C Engine oil dipstick | F Fuel filter |



Rigid Spine Frame

The innovative spine frame – the foundation of our engineering design – tackles the toughest jobs without twisting and provides excellent balance when lifting, digging, pushing heavy snow and traveling on uneven ground. Its design protects components from dirt, debris and foreign objects, as well as delivers easy access to routine maintenance items.

SPECIFICATIONS



Model	5600	5610
Performance	1	
Rated Lift Capacity (Lift Arm)	1500 lb. (680 kg)	1500 lb. (680 kg)*
Cargo Box Capacity	2000 lb. (909 kg)	-
Towing Capacity	4000 lb. (1814 kg)	4000 lb. (1814 kg)
3-Point Hitch Capacity (24 in. Behind Lift Points)	-	1775 lb. (805 kg)
PTO Horsepower	-	25 hp (18.6 kW)
Storage Bin Capacity (Each)	-	50 lb. (22 kg)
Machine Rated Capacity (combined weight of load on lift arm, cargo box load, operator and passenger)	2200 lb. (998 kg)	2200 lb. (998 kg)
Total Rated Capacity (combined weight of load on lift arm, cargo box load, operator and passenger, and tow weight if equipped with a hitch)	4200 lb. (1905 kg)	4200 lb. (1905 kg)
Travel Speeds		
Low range	0-8 mph (0-12.9 km/hr.)	0-8 mph (0-12.9 km/hr.)
High range	0-16.5 mph (0-26.5 km/hr.)	0-16.5 mph (0-26.5 km/hr.)
Reverse	0-8 mph (0-12.9 km/hr.)	0-8 mph (0-12.9 km/hr.)
Travel Speeds with optional 29 x 10.5-15 tires		
Low range	0-8.5 mph (0-13.7 km/hr.)	0-8.5 mph (0-13.7 km/hr.)
High range	0-17.5 mph (0-28.1 km/hr.)	0-17.5 mph (0-28.1 km/hr.)
Reverse	0-8.5 mph (0-13.7 km/hr.)	0-9 mph (0-13.7 km/hr.)
Dimensions		
Cab Height	81.0 in. (2057 mm)	81.0 in. (2057 mm)
Cab Height with optional 29 x 10.5-15 tires	82.0 in. (2083 mm)	82.0 in. (2083 mm)
Overall Length	181.6 in. (4613 mm)	180.8 in. (4592 mm)
Overall Width	60.0 in. (1524 mm)	60.0 in. (1524 mm)
Ground Clearance	9.1 in. (232 mm)	8.2 in. (209 mm)
Ground Clearance with optional 29 x 10.5-15 tires	10.1 in. (258 mm)	9.2 in. (235 mm)
Operating Weight	5680 lb. (2576 kg)	5710 lb. (2590 kg)
Outside Turning Diameter (AWS)	11.2 ft. (3419 mm)	11.2 ft. (3419 mm)
Lift Height	83.3 in. (2116 mm)	83.3 in. (2116 mm)
Lift Height with optional 29 x 10.5-15 tires	84.3 in. (2141 mm)	84.3 in. (2141 mm)
Engine		
Horsepower	61.0 hp (45.5 kW)	61.0 hp (45.5 kW)
Engine Type	Diesel	Diesel
Fuel Tank Capacity	20.0 gal. (76.0 L)	20.0 gal. (76.0 L)
Machine Shutdown Protection Feature	Std	Std
Battery Rundown Protection	Std	Std
Bobcat SmartFan	Std	Std
Horsepower Management	Std	Std



Model	5600	5610
Machine Features		
Comfort Features		
Cab with Heat and Air Conditioning	Opt	Std
Cruise Control	Std	Std
Radio/CD Player	Opt	Std
Driver's Side Suspension Seat	Opt	Opt
Floorboard Riser Kit	Opt	Opt
Intermittent Windshield Wipers	Std	Std
Step Kit	Opt	Opt
Front Work Lights	Std	Std
Rear Work Lights	Opt	Std
Road Light Kit	Opt	Std
Performance Features		
Four-Wheel Drive	Std	Std
Four-Wheel Independent Suspension	Std	Std
Limited Slip Differentials	Std	Std
Traction Control	Opt	Std
2-Speed Transmission	Std	Std
Hydraulic Dump Cargo Box	Std	-
Rear Window Guard	Opt	-
2 in. Rear Receiver Hitch	Std	Std
PTO	-	Std
3-pt. Hitch	-	Std
Rear Remote Hydraulics	-	Std
Machine Safety Features		
ROPS/FOPS Approved Cab Structure	Std	Std
Toolcat Interlock Control System (TICS™)	Std	Std
Back-up Alarm and Horn	Opt	Std
Keyless Start System	Opt	Std
Features for Attachments		
Auxiliary Hydraulics	Std	Std
Hydraulic Standard Flow	18.8 gpm (71.0 L/min.)	18.8 gpm (71.0 L/min.)
Hydraulic High Flow (Optional)	27.9 gpm (105.0 L/min.)	27.9 gpm (105.0 L/min.)
Hydraulic Pressure	3000 psi (207 bar)	3000 psi (207 bar)
Power Bob-Tach Mounting System	Opt	Std
Pressure Release Hydraulic Quick Couplers	Std	Std
Fingertip Auxiliary Control	Std	Std
Attachment Control Kit	Opt	Std
Lift Arm Float Functionality	Std	Std
Dual Direction Detent	Std	Std
Work Mode	Std	Std

*1,500-pound ROC if machine is equipped with 3-point PTO. Certain specification(s) are based on engineering calculations and are not actual measurements. Specification(s) are provided for comparison purposes only and are subject to change without notice. Specification(s) for your individual Bobcat equipment will vary based on normal variations in design, manufacturing, operating conditions, and other factors.





The Toolcat 5600 offers over 6 ½ feet of lift height for loading or placing materials.



The Toolcat 5610 3-point hitch can utilize Bobcat implements – plus all of your Category 1 3-point hitch implements from other manufacturers.



Compact and agile, the Toolcat utility work machines achieve a tighter turning radius than most ATVs. All-wheel steer allows you to maneuver in tight spaces without having to back up and reposition. Turn around trees and through tight corners, and get in and out of small barns and buildings.



Train operators and technicians in the safe operation and servicing of Bobcat equipment. Operator training courses, safety videos and other training materials are available at your Bobcat dealer's parts department or online at Bobcat.com/Training

A BRAND NEW WAY TO COVER YOUR BACKSIDE



Select a Bob-Tach-mounted bucket or attachment up front, pair it with an implement in back, and there's no stopping you. Finish one job. Then look behind you and do the next one. The new Toolcat 5610 can carry complementary attachments and implements for incredible efficiency, and with the right combination you can even do two tasks without switching implements.



PIONEERING MANEUVERABILITY

Bobcat introduced its first compact loader in 1958, and two years later, the world's first skid-steer loader. This created an entire industry of machines that put the power of large equipment in a compact size with unmatched maneuverability.

OFFERING MORE VERSATILITY

In 1970, Bobcat invented the first quick-change attachment system for skid-steer loaders, known as the Bob-Tach mounting system. Today we offer more compact equipment attachments than anyone in the world, empowering customers to transform all of our machines into multi-tasking attachment carriers and reach higher levels of production.

ONE TOUGH ANIMAL®

All over the world, Bobcat equipment is known for being durable and dependable. By lasting longer and minimizing downtime, we help our customers become as successful as possible.

HELP WHEN YOU NEED IT

With over 50 years of experience and more than 550 locations, we offer the best dealer network in the country for compact equipment. Our dealers offer a quality sales force, dependable parts departments and qualified service technicians, all leading to a quality customer experience.



A CONSTANT INNOVATOR

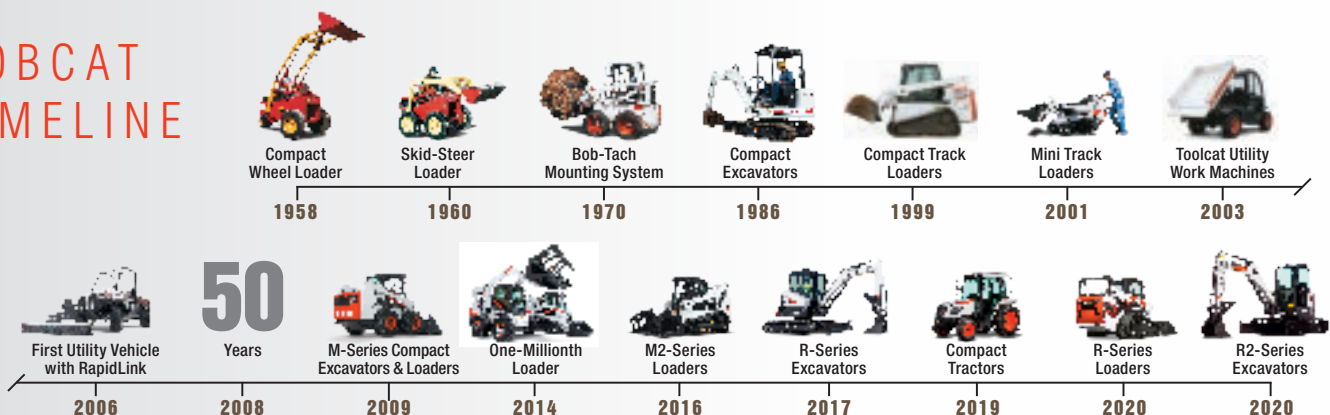
In the late 1950s, a turkey farmer needed help – so in 1958, we introduced what was to become the world's first skid-steer loader. We created an industry by listening to the needs of the customer. This focus is the same today. In 2000, a superintendent needed help – so we built the world's first Toolcat utility work machine. We continue to be a global leader in innovation by listening to our customers.

LEADER BY DESIGN

Listening to the customer and a pioneering spirit are why Bobcat continues to lead the evolution of compact equipment ...

- 1960** Invented the FIRST true skid-steer loader.
- 1970** Invented the FIRST attachment mounting system for skid-steer loaders.
- 1977** Built the FIRST skid-steer loader with no chain adjustments required. Still a Bobcat exclusive.
- 1981** Introduced the FIRST secondary restraint seat bar.
- 1983** Developed the FIRST skid-steer loader with a transversely mounted engine. Still a Bobcat exclusive.
- 1990** Introduced the FIRST compact excavator manufactured in the U.S.
- 1999** Introduced the FIRST compact track loader with a solid-mounted undercarriage manufactured in the U.S.
- 2001** Invented the FIRST loader with all-wheel steer and skid-steer capabilities. Still a Bobcat exclusive.
- 2003** Revolutionized the way the world works with the invention of the Toolcat™ utility work machine line, the world's FIRST utility work machines – a cross between a pickup, attachment carrier and utility vehicle. Still a Bobcat exclusive.
- 2006** Introduced the FIRST utility vehicle with RapidLink™ attachment mounting system.
- 2008** Introduced Roller Suspension™, the FIRST all-steel suspension system.
- 2009** Launched M-Series compact excavators and loaders.
- 2011** The M-Series loader models S850 and T870 became the largest and most powerful in the Bobcat product lineup.
- 2012** Bobcat introduced two new sizes of extendable-arm excavator options that are both attachment and clamp-ready.
- 2013** The M-Series 500 frame-size loaders replaced the popular S185 and T190 (among many others). This loader size is the most popular in the world and has been for two decades.
- 2014** Bobcat launched the 400 frame-size loaders, completing the M-Series line; manufactured its one-millionth loader; introduced its own Tier 4, non-DPF engines; and opened the Bobcat Acceleration Center, a dedicated innovation, testing and technology facility.
- 2016** Launched the M2-Series loaders.
- 2017** Launched the R-Series excavators.
- 2019** Launch of the compact tractor.
- 2020** Launch of R-Series loaders.
- 2020** Launch of R2-Series excavators.
- Today** There are more Bobcat skid-steer loaders at work around the world than all other brands combined.
- Today** Bobcat manufactures more attachments than anyone in the world.
- Today** Bobcat is the only company that offers operator training kits for compact equipment.
- Today** Bobcat offers a full range of extendable-arm options, three sizes fitting five different excavator models.
- Today** Compact track loaders are rapidly becoming the product of choice in many market segments.

BOBCAT TIMELINE





YOU ARE ONE TOUGH ANIMAL.

Everything we put into Bobcat equipment is designed to make more of whatever you bring to the job. Whether it's strength, versatility, speed or agility, it's built around you.



Bobcat is a Doosan company. Doosan is a global leader in construction equipment, power and water solutions, engines, and engineering, proudly serving customers and communities for more than a century. Bobcat®, the Bobcat logo and the colors of the Bobcat machine are registered trademarks of Bobcat Company in the United States and various other countries. ©2020 Bobcat Company. All rights reserved.



Printed on 10% recycled paper

B-1829 (03/20)
Kn-6.5M-0320-63990-15-F

Bobcat Company

250 East Beaton Drive • West Fargo, ND 58078

Bobcat.com



Bobcat®

One Tough Animal.

RESOLUTION 2020-250

WHEREAS, the Solid Waste Division of the Public Works Department of the City of Grand Island budgeted for a utility work machine in the 2021 fiscal year; and

WHEREAS, said machine, Bobcat 5600, can be obtained from the State Contract Holder; and

WHEREAS, purchasing the utility work machine from the State Contract Holder meets all statutory bidding requirements; and

WHEREAS, the funding for such machine is provided in the 2021 budget.

NOW, THEREFORE, BE IT RESOLVED BY THE MAYOR AND COUNCIL OF THE CITY OF GRAND ISLAND, NEBRASKA, that the purchase of a Bobcat 5600 ToolCat Utility Work Machine, in the amount of \$61,414.70 from Central Nebraska Bobcat of Grand Island, Nebraska is hereby approved.

- - -

Adopted by the City Council of the City of Grand Island, Nebraska, October 13, 2020.

Roger G. Steele, Mayor

Attest:

RaNae Edwards, City Clerk

Approved as to Form	☐ _____
October 23, 2020	☐ City Attorney