



City of Grand Island

Tuesday, September 22, 2020

Council Session

Item E-1

Public Hearing on Acquisition of Utility Easement - 4705 Gold Core Drive - ZITSKI, LLC

Council action will take place under Consent Agenda item G-5.

Staff Contact: Tim Luchsinger, Stacy Nonhof

Council Agenda Memo

From: Tim Luchsinger, Utilities Director
Stacy Nonhof, Interim City Attorney

Meeting: September 22, 2020

Subject: Acquisition of Utility Easement – 4705 Gold Core Drive

Presenter(s): Timothy Luchsinger, Utilities Director

Background

Nebraska State Law requires that acquisition of property must be approved by City Council. The Utilities Department needs to acquire utility easement relative to the property of ZITSKI, LLC, located through a part of Lot Six (6), Platte Valley Industrial Park Third Subdivision, in the City of Grand Island, Hall County, Nebraska (4705 Gold Core Drive), in order to have access to install, upgrade, maintain, and repair power appurtenances, including lines and transformers.

Discussion

Nova-Tech has requested an additional upgrade to their electrical service. A new three-phase pad-mount transformer will be installed on the west side of their existing north building and 4” conduit containing 4/0 copper cable will be installed from Gold Core Drive, east to the new transformer. The City has requested a twenty (20.0) foot wide easement tract to accommodate the new electrical service addition. The proposed easement will allow the Utilities Department to install, access, operate and maintain the electrical infrastructure at this location.

Alternatives

It appears that the Council has the following alternatives concerning the issue at hand. The Council may:

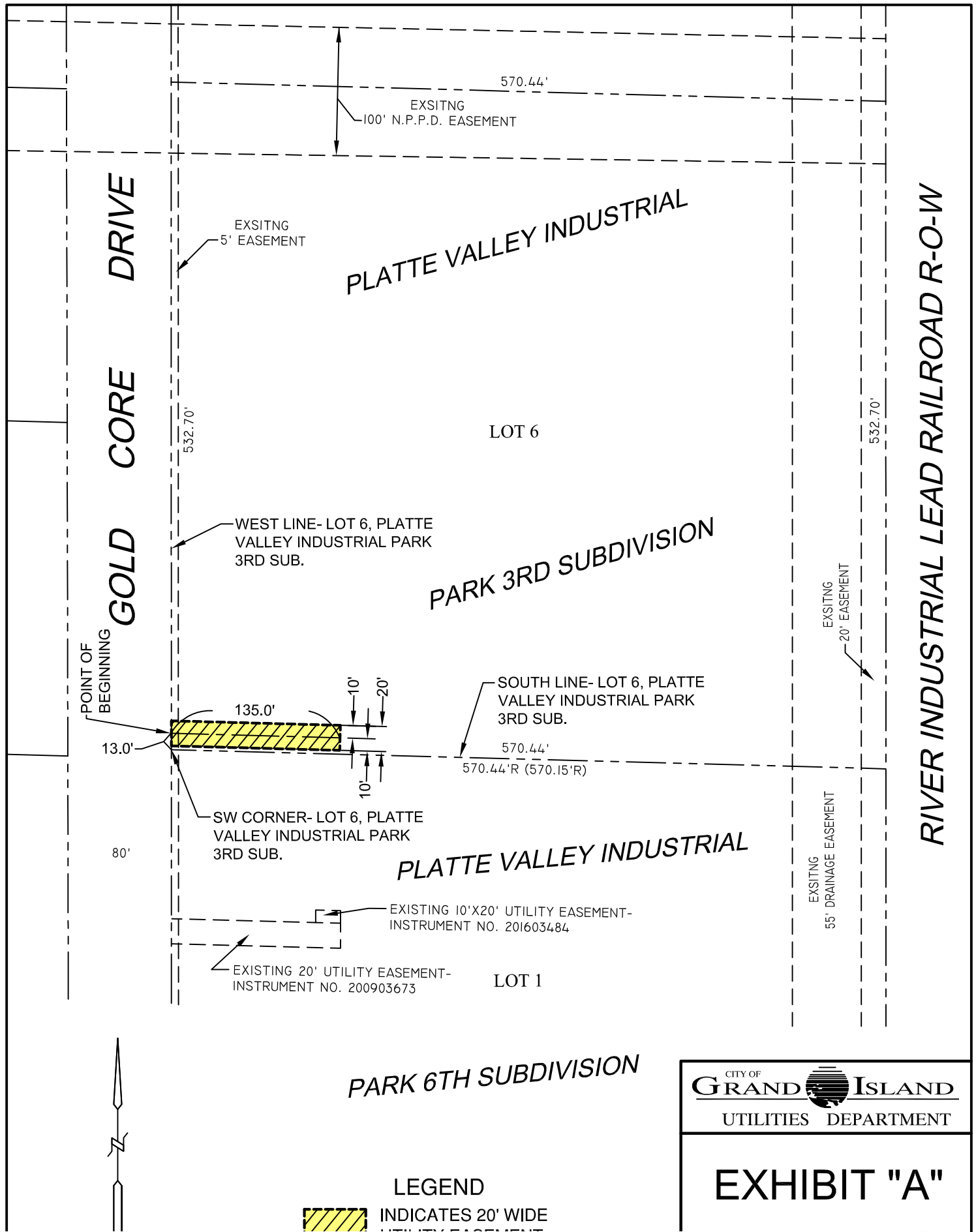
1. Make a motion to approve
2. Refer the issue to a Committee
3. Postpone the issue to future date
4. Take no action on the issue

Recommendation

City Administration recommends that the Council approve the resolution for the acquisition of the easement for one dollar (\$1.00).

Sample Motion

Move to approve acquisition of the Utility Easement.



CITY OF
GRAND ISLAND
 UTILITIES DEPARTMENT

EXHIBIT "A"

LEGEND

 INDICATES 20' WIDE UTILITY EASEMENT