



City of Grand Island

Tuesday, July 28, 2020

Council Session

Item E-3

Public Hearing on Acquisition of Utility Easement - 3860 S. Locust Street - Hooker Bros. Sand & Gravel, Inc.

Council action will take place under Consent Agenda item G-10.

Staff Contact: Tim Luchsinger, Stacy Nonhof

Council Agenda Memo

From: Tim Luchsinger, Utilities Director
Stacy Nonhof, Interim City Attorney

Meeting: July 28, 2020

Subject: Acquisition of Utility Easement – 3860 S. Locust Street –
Hooker Bros. Sand & Gravel, Inc.

Presenter(s): Timothy Luchsinger, Utilities Director

Background

Nebraska State Law requires that acquisition of property must be approved by City Council. The Utilities Department needs to acquire utility easement relative to the property of Hooker Bros. Sand & Gravel, Inc., located through a part of the North Half (N ½), of the Southeast Quarter (SE ¼), Section Thirty-Three (33), Township Eleven (11) North, Range Nine (9) West of the 6th P.M., Hall County, Nebraska (3860 South Locust Street), in order to have access to install, upgrade, maintain, and repair power appurtenances, including lines and transformers.

Discussion

Hooker Bros. Sand & Gravel, Inc. is putting on an addition to their maintenance building located at 3860 South Locust Street. An existing pad-mount transformer has been relocated to accommodate the addition. The existing two 20' easements will be vacated, and a new 20-foot utility easement will be acquired for the existing underground electric service. The proposed easement will allow the Utilities Department to install, access, operate, and maintain the electrical infrastructure at this location.

Alternatives

It appears that the Council has the following alternatives concerning the issue at hand. The Council may:

1. Make a motion to approve
2. Refer the issue to a Committee
3. Postpone the issue to future date
4. Take no action on the issue

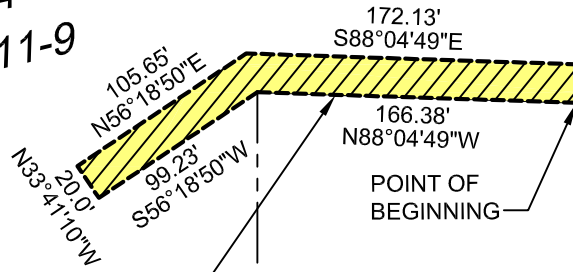
Recommendation

City Administration recommends that the Council approve the resolution for the acquisition of the easement for one dollar (\$1.00).

Sample Motion

Move to approve acquisition of the Utility Easement.

N1/2, SE 1/4
SECTION 33-11-9



A PARTICULAR EAST-WEST
LINE- TRACT OF LAND
DESCRIBED IN INSTRUMENT
NO. 99107665

WESTERLY
RIGHT-OF-WAY LINE-
LOCUST STREET

1/16 SECTION LINE

SE CORNER- N1/2, SE1/4,
SECTION 33-11-9

SE 1/4, SE 1/4
SECTION 33-11-9

EAST LINE- SE1/4,
SECTION 33-11-9

SE CORNER- SE 1/4,
SECTION 33-11-9

SECTION LINE

SCHIMMER DRIVE

LEGEND



INDICATES 20' WIDE
UTILITY EASEMENT

LOCUST STREET

1,528.37'
N00°13'14"E
(ASSUMED)

CITY OF
GRAND ISLAND
UTILITIES DEPARTMENT

EXHIBIT "A"