



Hall County Regional Planning Commission

Wednesday, January 2, 2019

Regular Meeting

Item F2

Grand Island 1 and 6 Year Street Improvement Plan

Staff Contact:

CITY OF

Grand Island

NEBRASKA

PUBLIC WORKS

1 & 6 YEAR STREET IMPROVEMENT PLAN 2019

Presented by: John Collins, PE

2018 SUBSTANTIALLY COMPLETE PROJECTS (FROM 1 & 6 STREET IMPROVEMENT PLAN)

PROJECT	TOTAL PROJECT
Hwy 281 GI & North	\$ 10,843,000
Sycamore Underpass Rehabilitation – Design	\$ 320,000
Stolley Park Rd Rehabilitation / Reconfiguration- Design & Environmental	\$ 160,000
Old Potash Improvements - Claude to Webb- Traffic Study	\$ 150,000
13th St Improvements - North Rd to Diers Ave	\$ 1,300,000
William Street Reconfiguration- 2018-P-7	\$ 300,000
Asphalt Resurfacing, 2018-AC-1	\$ 650,000
TOTAL	\$ 13,723,000

****DOES NOT INCLUDE ALL CAPITAL PROJECTS**

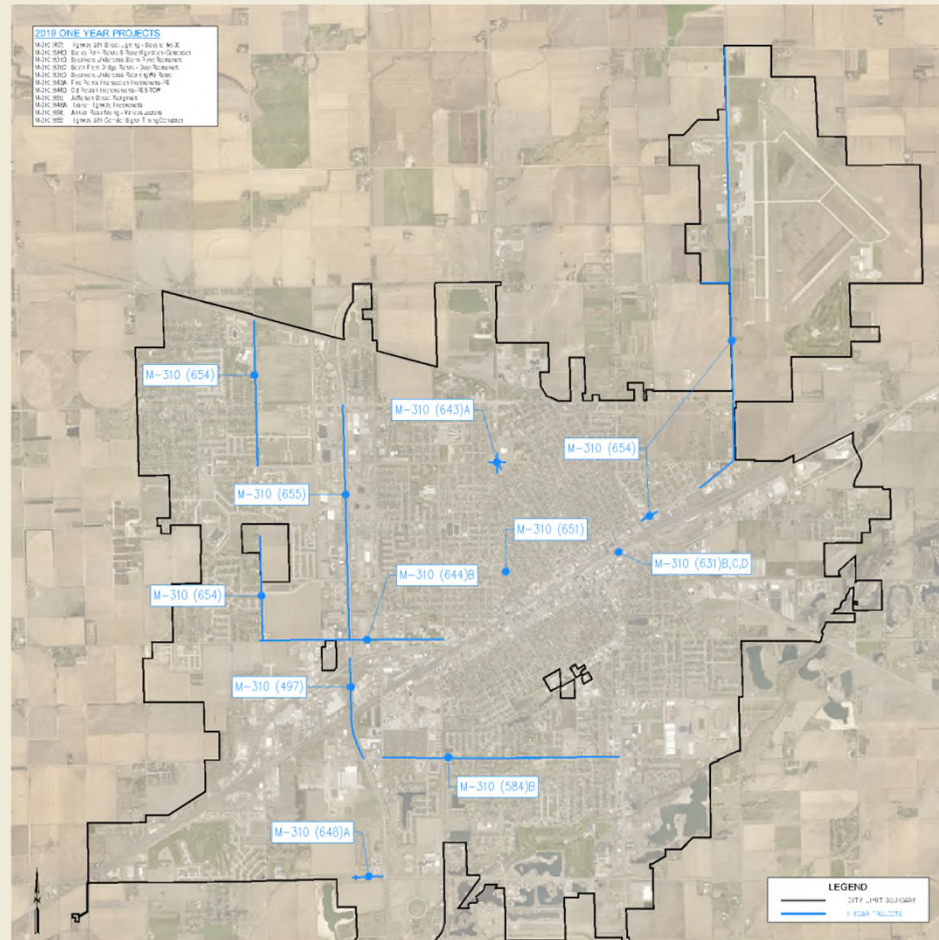
1 & 6 YEAR STREET IMPROVEMENT PLAN

(NOTES CITY COSTS)

	2019	2020	2021	2022	2023	2024
OBLIGATED TO OTHER AGENCIES						
Stolley Park Rd Rehabilitation / Reconfiguration- Construction	\$ 0					
Five Points Intersection Improvements	\$ 170,000	\$ 538,000				
Hwy 30 Realignment, S-30-4(1046) - City Share Est. \$10M					\$ 1,475,764	
Hwy 2 Resurfacing NDOR, NH-2-4(112) - City Share Est. \$600K					\$ 200,000	
Hwy 30 Bridges NDOT, NH-30-4(162)				\$ 80,000		
RECONSTRUCTION/NEW CONSTRUCTION						
Asphalt Resurfacing (annual)	\$ 900,000	\$ 900,000	\$ 900,000	\$ 900,000	\$ 900,000	\$ 900,000
Old Potash Improvements- Post Office to Webb Rd, PE/ROW	\$ 643,000	\$ 2,200,000	\$ 6,525,000	\$ 2,275,000		
Hwy 281 St Lighting - Stolley Park to Hwy 30 Interchange	\$ 95,000					
Hwy 281 Corridor Signal Timing Optimization	\$ 85,000					
Sycamore Underpass- Storm Pump Replacement/ S Front St						
Bridge Deck Replacement/ Retaining Wall Rehab	\$ 2,200,000					
Jefferson St Reconfiguration (Jefferson School)	\$ 0					
Husker Hwy Improvements- Prairieview to Hwy 281	\$ 0					
TOTAL	\$ 4,093,000	\$ 3,638,000	\$ 7,425,000	\$ 3,255,000	\$ 2,575,764	\$ 900,000

Hwy 30 Realignment- \$1.3M of \$2,775,764 City share was paid in FY 17/18

****DOES NOT INCLUDE ALL CAPITAL PROJECTS****

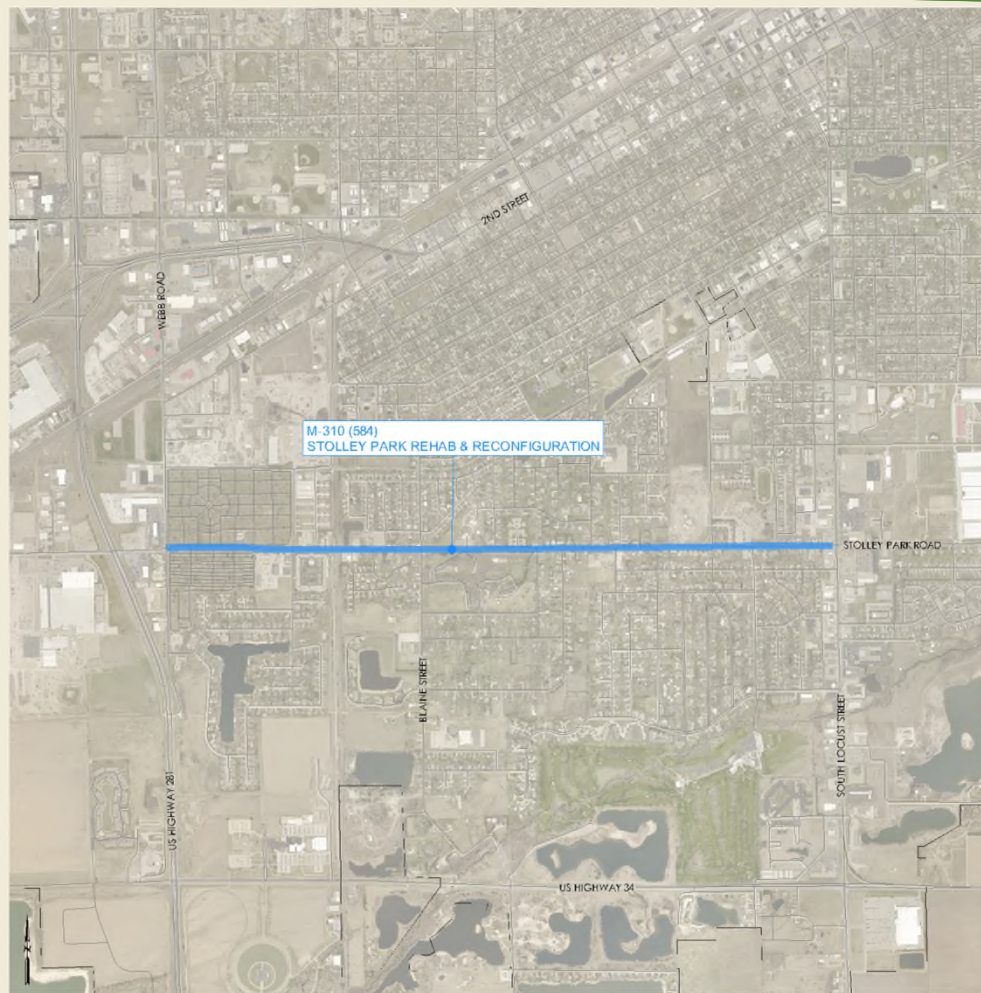


2019 ONE YEAR PROJECTS MAP

4

STOLLEY PARK ROAD RECONFIGURATION M-310 (584)

- Restriping for new lane designations
- Pavement repairs and diamond grinding for improving pavement structure and ride quality

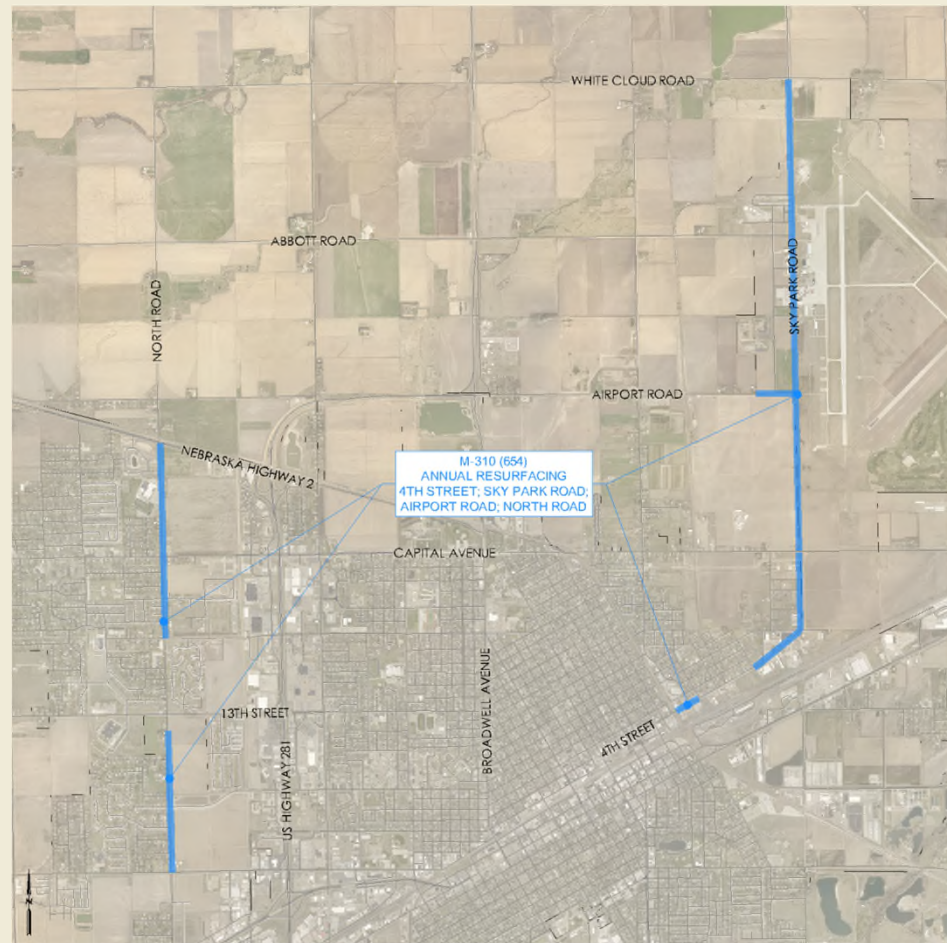


Five Points Intersection Improvements M-310 (643)

- 80% Federally funded safety project through Nebraska Department of Transportation (NDOT)
- Consists of multi-lane roundabout
- Will right size the lane configuration to optimize safety and efficiency, and meet the Federal Highway Administration (FHWA) safety program requirements

LOCAL RESURFACING M-310 (654)

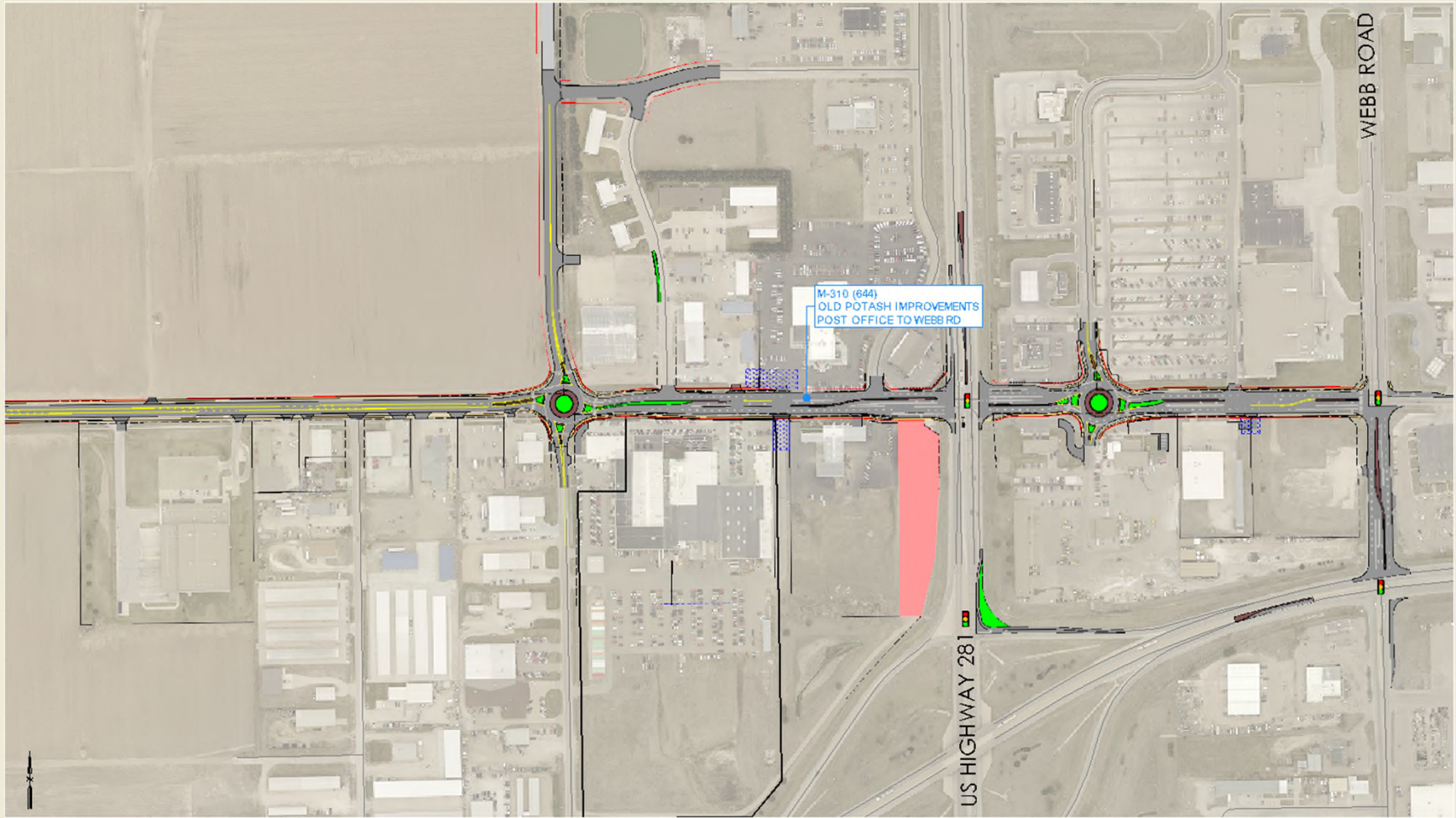
-  4th Street
-  Sky Park Road
-  Airport Road
-  North Road



OLD POTASH HIGHWAY IMPROVEMENTS

M-310 (644)

- The interaction between the various traffic features is complex, prompting the creation of a master plan for the corridor to ensure that the individual street and intersection projects will function together
- Preferred alternative was recently presented, which included widening and reconfiguring Old Potash, signal and geometric improvements at each intersection, and increased connectivity to roadway network
- Anticipated expenditures will include design engineering and property acquisition



Highway 281 Lighting M-310 (497)

- ☀ Stolley Park Road to US Highway 30 Interchange lighting
- ☀ Addition of roadway lighting to allow for improved safety by creating consistent lighting for commuters on US Highway 281
- ☀ Last section from north to south side through the City

12



SYCAMORE UNDERPASS REHAB


M-310 (631)

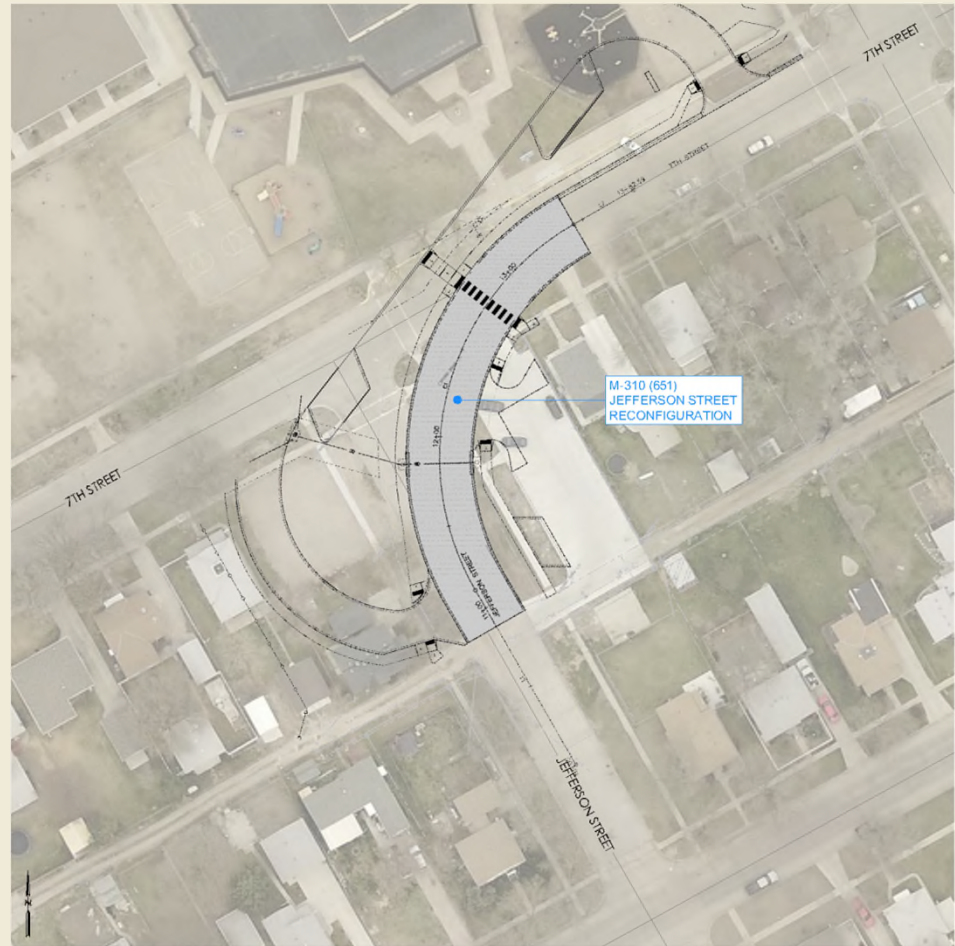
- Replace bridge deck, two (2) abutment walls, patch and seal retaining walls, improve drainage, and reconstruct pump station
- Construction began in 2018 with completion slated in 2019





Jefferson Street Reconfiguration M-310 (651)

 GIPS project to improve
traffic & pedestrian
safety



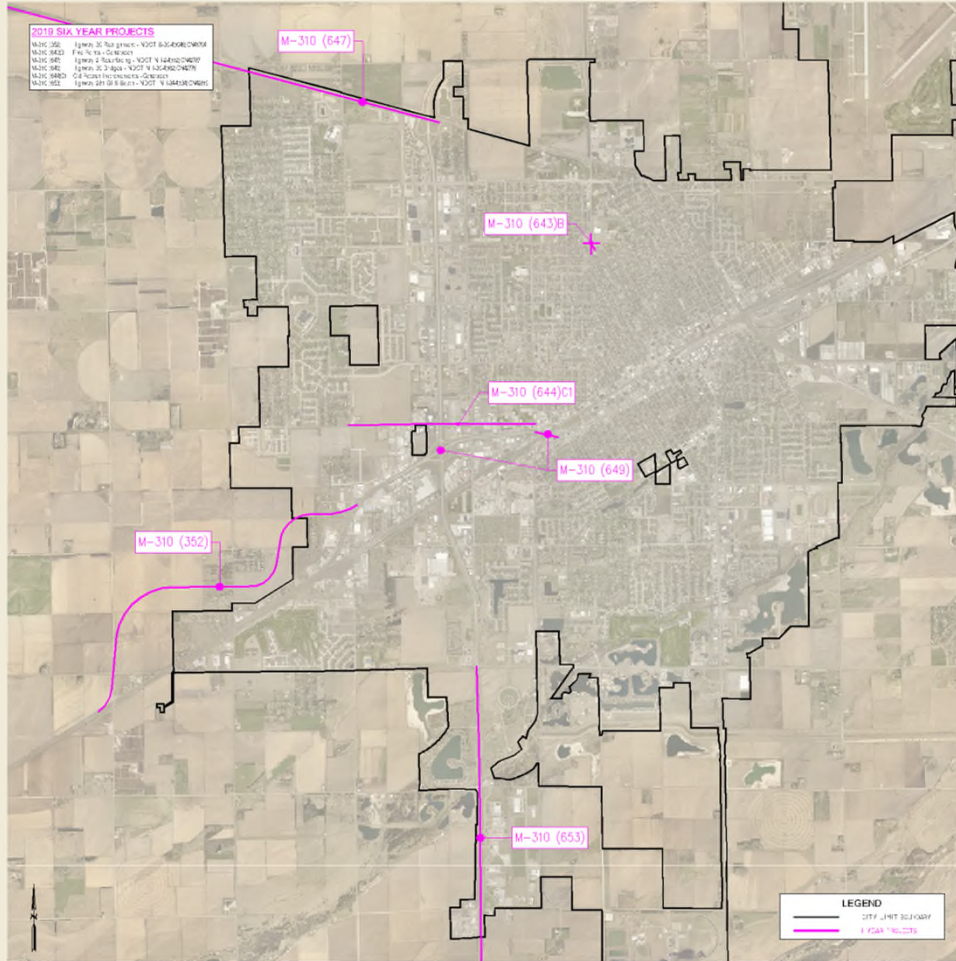
16

Husker Highway Improvements- Prairieview to Highway 281 M-310 (648)

- In connection with Grand Island Regional Hospital development with no City cost
- Improvements to roadway & drainage
- Roundabout at Prairieview Street & Husker Highway

17





2020 – 2024 YEAR PROJECTS MAP

18