



City of Grand Island

Tuesday, March 26, 2019

Council Session

Item G-10

**#2019-106 - Approving Acquisition of Utility Easement - 3579
North US Highway 281 - Stevensen**

This item relates to the aforementioned Public Hearing item E-2.

Staff Contact: Tim Luchsinger, Stacy Nonhof

RESOLUTION 2019-106

WHEREAS, a public utility easement is required by the City of Grand Island from Robert D. and Michelle J. Stevensen, to survey, construct, inspect, maintain, repair, replace, relocate, extend, remove, and operate thereon, public utilities and appurtenances, including power lines and;

WHEREAS, a public hearing was held on March 26, 2019, for the purpose of discussing the proposed acquisition of a ten (10.0) foot utility easement located through a part of Lot Two (2), Pulte Second Subdivision in Hall County, Nebraska; and more particularly described as follows:

Beginning at a particular Southwest corner of Lot Two (2), Pulte Second Subdivision, Hall County, Nebraska, said point also being the Northwest corner of Lot Three (3), said Pulte Second Subdivision; thence easterly along a southerly line of said Lot Two (2) and the northerly line of said Lot Three (3), a distance of one hundred fifty eight and twenty eight hundredths (158.28) feet to a point on the westerly line of an existing sixteen (16.0) foot wide power easement as shown on original plat of said Pulte Second Subdivision.

The above-described easement and right-of-way containing a total of 0.036 acres, more or less, as shown on the plat dated 12/3/2018, marked Exhibit "A", attached hereto and incorporated herein by reference.

NOW, THEREFORE, BE IT RESOLVED BY THE MAYOR AND COUNCIL OF THE CITY OF GRAND ISLAND, NEBRASKA, that the City of Grand Island be, and hereby is, authorized to acquire a public utility easement from Robert D. and Michelle J. Stevensen, on the above-described tract of land.

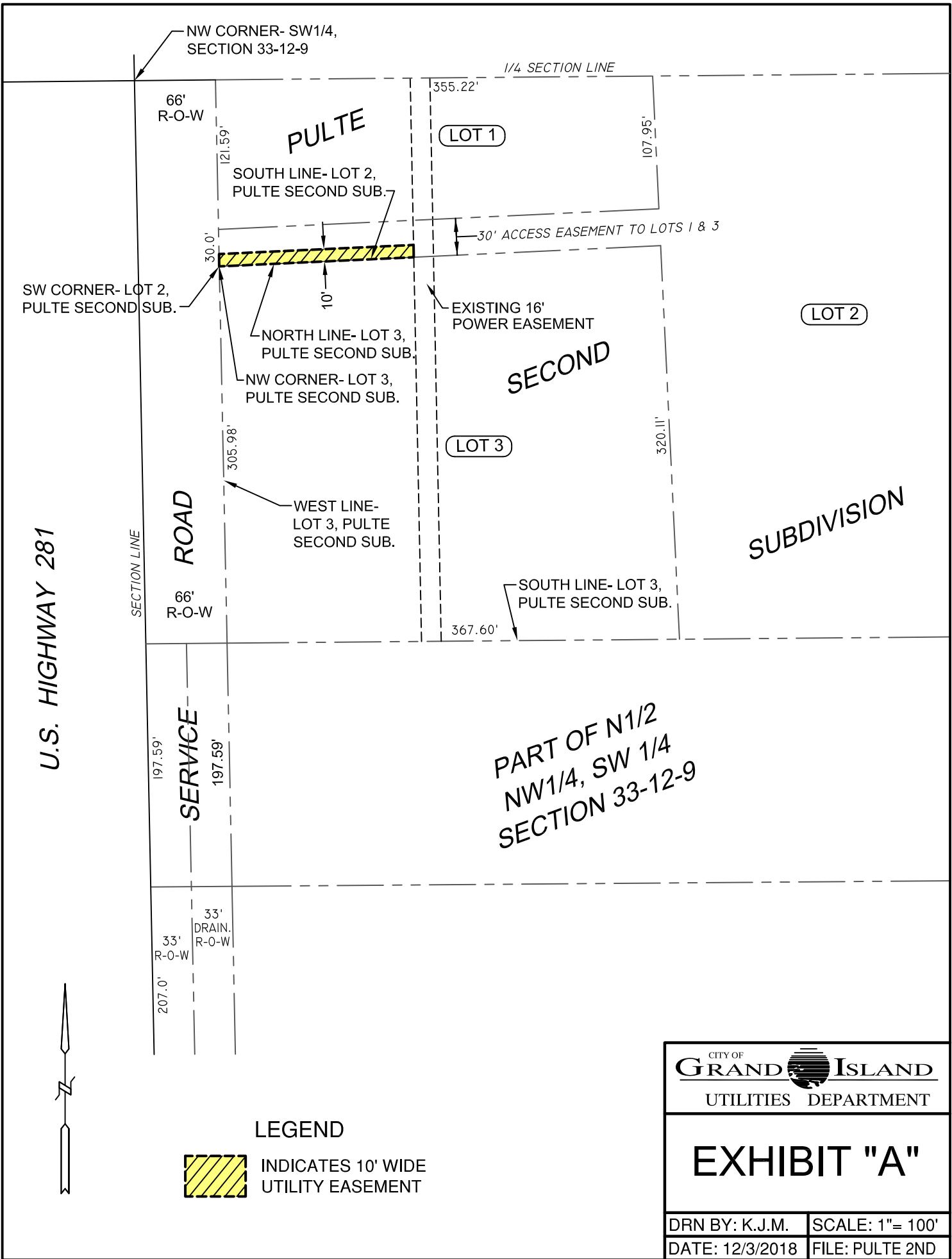
Adopted by the City Council of the City of Grand Island, Nebraska, March 26, 2019.

Roger G. Steele, Mayor

Attest:

RaNae Edwards, City Clerk

Approved as to Form	☐ _____
March 22, 2019	☐ City Attorney



U.S. HIGHWAY 281

SECTION LINE

ROAD

SERVICE

DRAIN.

PULTE

SECOND

SUBDIVISION

LOT 1

LOT 2

LOT 3

PART OF N1/2
NW1/4, SW 1/4
SECTION 33-12-9

LEGEND



INDICATES 10' WIDE UTILITY EASEMENT

CITY OF GRAND ISLAND UTILITIES DEPARTMENT	
<h1>EXHIBIT "A"</h1>	
DRN BY: K.J.M.	SCALE: 1"= 100'
DATE: 12/3/2018	FILE: PULTE 2ND