



# City of Grand Island

Tuesday, February 12, 2019

Council Session

## Item E-2

### **Public Hearing on Acquisition of Utility Easement - 3230 E. Highway 34 - Fast Track Buildings & Construction**

*Council action will take place under Consent Agenda item G-5.*

Staff Contact: Tim Luchsinger, Stacy Nonhof

# Council Agenda Memo

**From:** Tim Luchsinger, Utilities Director  
Stacy Nonhof, Assistant City Attorney

**Meeting:** February 12, 2019

**Subject:** Acquisition of Utility Easement – 3230 E. U.S. Highway 34 – Fast Track Buildings & Construction, LLC

**Presenter(s):** Timothy Luchsinger, Utilities Director

## Background

Nebraska State Law requires that acquisition of property must be approved by City Council. The Utilities Department needs to acquire utility easement relative to the property of Fast Track Buildings & Construction and Bradley W. and Christina L. Shearer, through a part of Lot One (1), Meadow Lane Seventh Subdivision, in Hall County, Nebraska (3230 E. U.S. Highway 34), in order to have access to install, upgrade, maintain, and repair power appurtenances, including lines and transformers.

## Discussion

Fast Track Buildings & Construction has requested an electrical service for the property located at 3230 E. U.S. Highway 34. As part of the work the Utilities Department needs to install 3-phase cable and a pad-mounted transformer to provide service to the property. The proposed easement will allow the department to install, access, operate and maintain the electrical infrastructure at this location.

## Alternatives

It appears that the Council has the following alternatives concerning the issue at hand. The Council may:

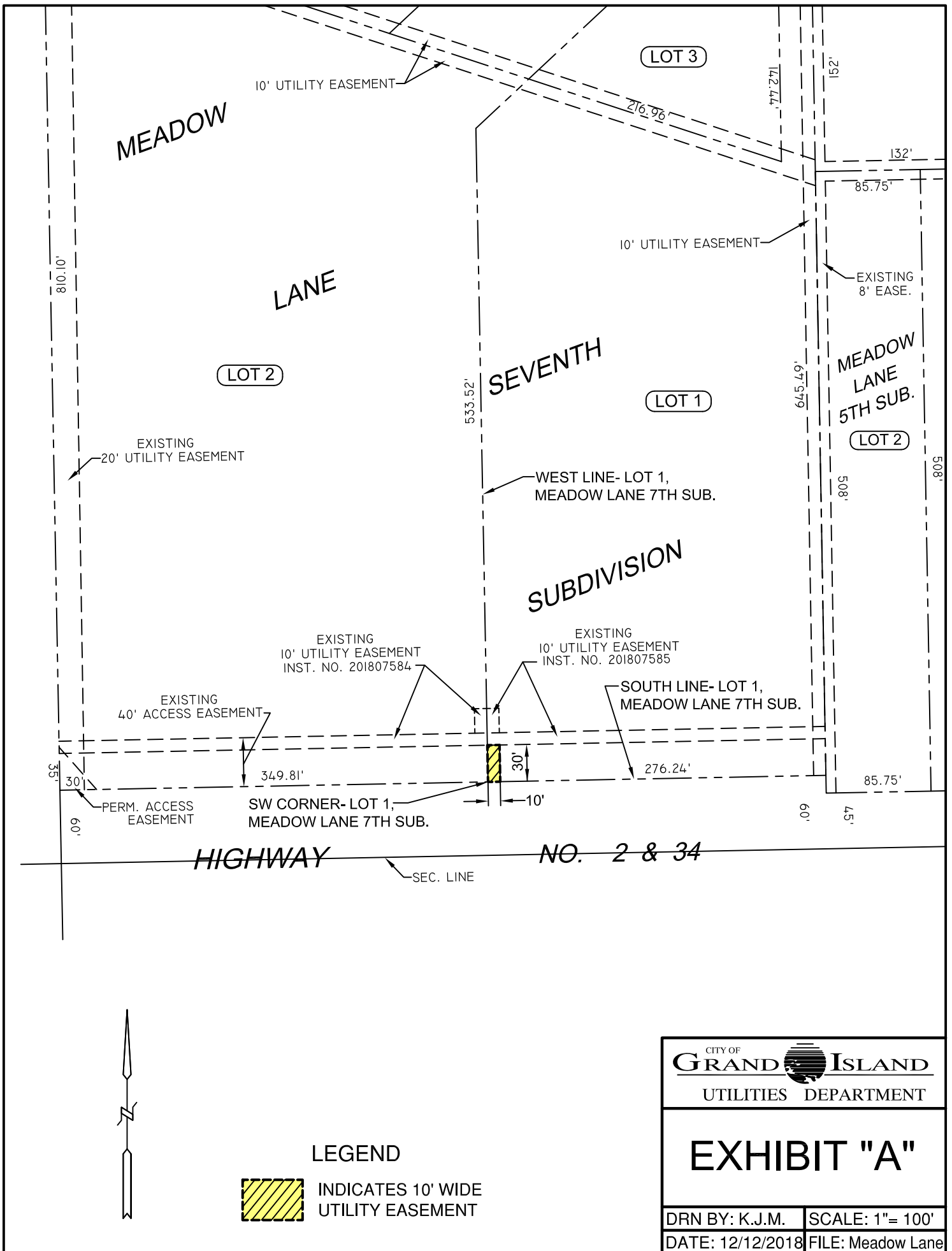
1. Make a motion to approve
2. Refer the issue to a Committee
3. Postpone the issue to future date
4. Take no action on the issue

## Recommendation

City Administration recommends that the Council approve the resolution for the acquisition of the easement for one dollar (\$1.00).

## Sample Motion

Move to approve acquisition of the Utility Easement.



**LEGEND**



INDICATES 10' WIDE UTILITY EASEMENT

CITY OF <b>GRAND ISLAND</b> UTILITIES DEPARTMENT	
EXHIBIT "A"	
DRN BY: K.J.M.	SCALE: 1"= 100'
DATE: 12/12/2018	FILE: Meadow Lane