



City of Grand Island

Tuesday, October 23, 2018

Council Session

Item E-8

**Public Hearing on Acquisition of Sanitary Sewer Easement in
Concept Subdivision (1723 E 4th Street- Ummel) and Ummelville
Second Subdivision (1919 E 4th Street- Ummel)**

Council action will take place under Consent Agenda item G-14.

Staff Contact: John Collins, P.E. - Public Works Director

Council Agenda Memo

From: Keith Kurz PE, Assistant Public Works Director

Meeting: October 23, 2018

Subject: Public Hearing on Acquisition of Sanitary Sewer Easement in Concept Subdivision (1723 E 4th Street-Ummel) and Ummelville Second Subdivision (1919 E 4th Street- Ummel)

Presenter(s): John Collins PE, Public Works Director

Background

Nebraska State Statutes stipulate that the acquisition of property requires a public hearing be conducted with the acquisition approved by the City Council. The easement will provide access to sanitary sewer with further development of the Concept Subdivision and Ummelville Second Subdivision areas.

Discussion

The easement will allow access for the construction, operation, maintenance, extension, repair, replacement, and removal of sanitary sewer main within the easement. The new easement will be a total of twenty (20) feet wide, as shown on the attached drawing.

Property owner is dedicating such easement to the City, with no cost involved.

Alternatives

It appears that the Council has the following alternatives concerning the issue at hand. The Council may:

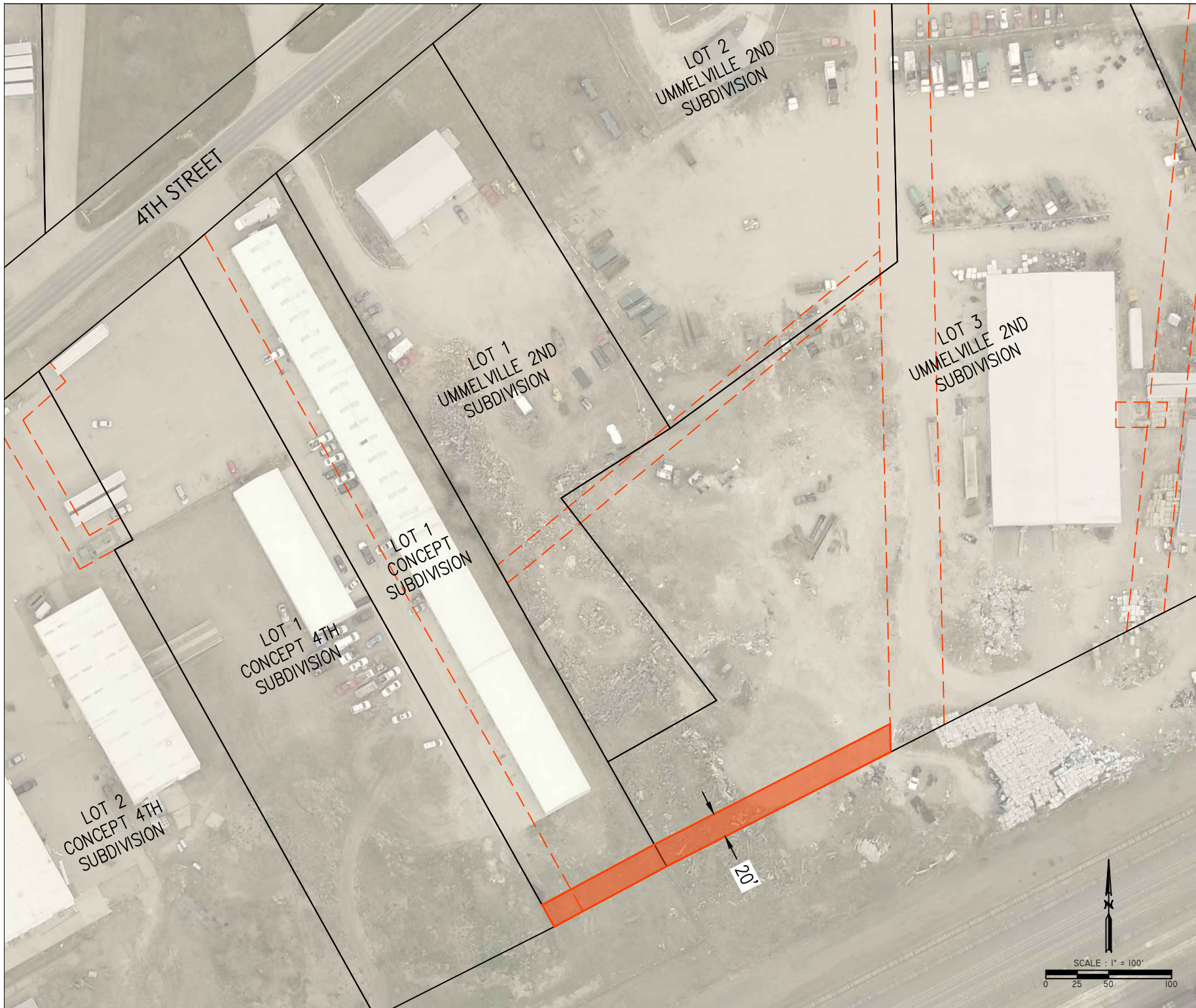
1. Move to approve
2. Refer the issue to a Committee
3. Postpone the issue to future date
4. Take no action on the issue

Recommendation

City Administration recommends that the Council conduct a Public Hearing and approve acquisition of the sanitary sewer easement in Concept Subdivision and Ummelville Second Subdivision.

Sample Motion

Move to approve the acquisition of the sanitary sewer easement.



DWG. J:\ENGINEERING\EXHIBITS\EXHIB UMMELVILLE SANITARY SEWER EASEMENT\EXHIB UMMELVILLE SANITARY SEWER EASEMENT.DWG 10/16/2018 9:59:39 AM

SANITARY SEWER EASEMENT

UMMELVILLE SECOND SUBDIVISION & CONCEPT SUBDIVISION
 GRAND ISLAND, NEBRASKA

EXHIBIT

A