



# City of Grand Island

Tuesday, October 23, 2018

Council Session

## Item G-14

**#2018-312 - Approving Acquisition of Sanitary Sewer Easement in Concept Subdivision (1723 E 4th Street- Ummel) and Ummelville Second Subdivision (1919 E 4th Street- Ummel)**

*This item relates to the aforementioned Public Hearing item E-8.*

Staff Contact: John Collins, P.E. - Public Works Director

RESOLUTION 2018-312

WHEREAS, a sanitary sewer easement is being dedicated by the property owner of 1723 E 4<sup>th</sup> Street and 1919 E 4<sup>th</sup> Street to the City of Grand Island, Hall County, Nebraska and more particularly described as follows:

THE SOUTH 20.00 FEET, MEASURED AT RIGHT ANGLES, OF LOT 1 CONCEPT SUBDIVISION IN THE CITY OF GRAND ISLAND, NEBRASKA AND THE SOUTH 20.00 FEET, MEASURED AT RIGHT ANGLES, LYING WEST OF THE EXISTING 43 FOOT WIDE SEWER EASEMENT, OF LOT 3 UMMELVILLE SECOND SUBDIVISION IN THE CITY OF GRAND ISLAND, NEBRASKA.

WHEREAS, an agreement for the sanitary sewer easement has been reviewed and approved by the City Legal Department; and

WHEREAS, there is no cost involved in the acquisition of such easement.

NOW, THEREFORE, BE IT RESOLVED BY THE MAYOR AND COUNCIL OF THE CITY OF GRAND ISLAND, NEBRASKA, that the City of Grand Island be, and hereby is, authorized to enter into the Agreement for the sanitary sewer easement on the above described tracts of land.

BE IT FURTHER RESOLVED, that the Mayor is hereby authorized and directed to execute such agreement on behalf of the City of Grand Island.

- - -

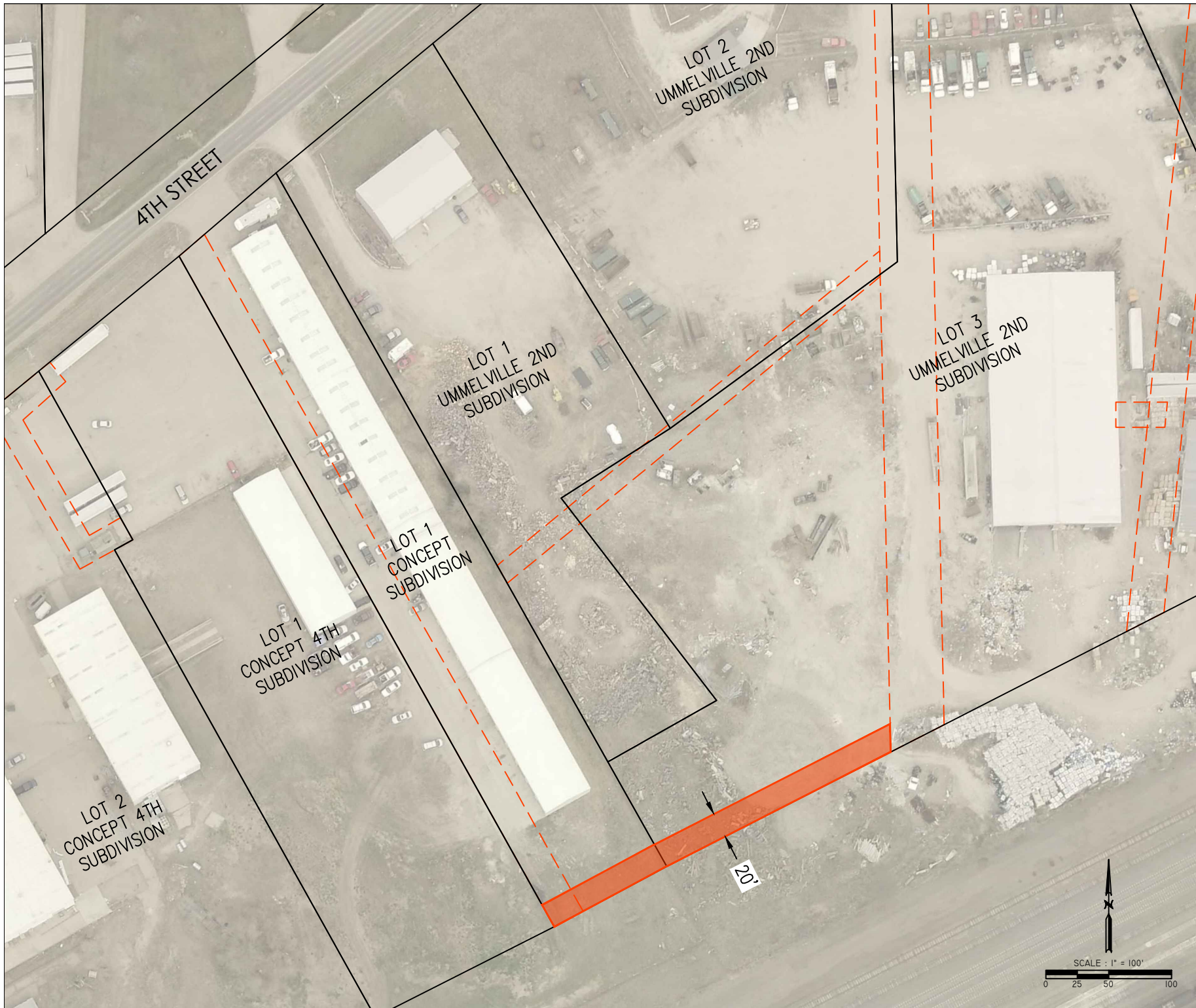
Adopted by the City Council of the City of Grand Island, Nebraska, October 23, 2018.

\_\_\_\_\_  
Jeremy L. Jensen, Mayor

Attest:

\_\_\_\_\_  
RaNae Edwards, City Clerk

Approved as to Form	☐ _____
October 18, 2018	☐ City Attorney



DWG. J:\ENGINEERING\EXHIBITS\EXHIB UMMELVILLE SANITARY SEWER EASEMENT\EXHIB UMMELVILLE SANITARY SEWER EASEMENT.DWG 10/16/2018 9:59:39 AM

**SANITARY SEWER EASEMENT**

UMMELVILLE SECOND SUBDIVISION & CONCEPT SUBDIVISION  
 GRAND ISLAND, NEBRASKA

EXHIBIT

A