



City of Grand Island

Tuesday, October 9, 2018

Council Session - Updated

Item I-1

**#2018-300 - Consideration of Approving Changes to Speed Limit
Resolution No. 2016-262**

Staff Contact: John Collins, P.E. - Public Works Director

Council Agenda Memo

From: Keith Kurz PE, Assistant Public Works Director

Meeting: October 9, 2018

Subject: Consideration of Approving Changes to Speed Limit
Resolution No. 2016-262

Presenter(s): John Collins PE, Public Works Director

Background

With the recent passing of LB1009, the Nebraska Department of Transportation contacted Public Works Engineering staff regarding an increase of speed limit on US Highways 34/281.

Speed limits on City streets that are set by state statute can be modified by resolution of the City Council. Modifications to speed limits are to be completed in accordance with the Manual of Uniform Traffic Control Devices (MUTCD).

Discussion

The Engineering Division of the Public Works Department conducted a safety study on US Highway 30 (1st Street) at Sycamore Street in order to improve safety, and found the transition of speed from 25mph to 35mph would be more suitable at Plum Street, with concurrence from the Nebraska Department of Transportation (NDOT). US Highway 281 within City limits was also reviewed for speed changes to accommodate NDOT's changes south of such limits. City staff also included a speed review of South Locust Street towards the interstate. Following are City staff recommendations for City Council consideration to make the changes.

STREET	FROM	TO	LIMIT
Locust Street- NB	Approximately 1,200 feet north of Interstate 80 (city limits)	Approximately 1,300 feet north of Schimmer Drive Wood River Floodway	55 65
Locust Street- SB	Camp Augustine	Approximately 1,200 feet north of Interstate 80 (city limits)	55
Locust Street- SB	Approximately 1,300 feet north of Schimmer Drive	Camp Augustine	65

Locust Street	Approximately 1,300 feet north of Schimmer Drive-Wood River Floodway	U.S. Highway 34	45
Locust Street	U.S. Highway 34	Stagecoach Road	40
Locust Street	Stagecoach Road	Stolley Park Road	35
Locust Street	Stolley Park Road	Charles Street	30
Locust Street	Charles Street	First Street	25
U.S. Highway 30	Husker Highway	Johnstown Road	55
U.S. Highway 30	Johnstown Road	East Intersection with Old Highway 30	45
U.S. Highway 30	East Intersection with Old Highway 30	Greenwich Street	35
U.S. Highway 30 (eastbound)/ Greenwich	Second Street	First Street	30
U.S. Highway 30 (1st Street and 2nd Street)	Greenwich Street	Eddy Street	30
U.S. Highway 30 (1st Street and 2nd Street)	Eddy Street	Sycamore Street	25
U.S. Highway 30 (1 st Street 2 nd Street)	Public Safety Drive	Sycamore Street	35
US Highway 30 (1st Street)	Sycamore Street	Plum Street	25
US Highway 30 (1st Street)	Plum Street	Public Safety Drive	35
U.S. Highway 30	Public Safety Drive	2,500 feet west of Shady Bend Road	45
U.S. Highway 30	2,500 feet west of Shady Bend Road	Shady Bend Road (east city limits)	50
US Highway 34/281- SB	Rae Road	Husker Highway	55
US Highway 34/281- SB	¼ mile south of Wildwood Drive (south city limits)	Rae Road	60
US Highway 34/281- NB	Approximately 300 feet north of Schimmer Drive	¼ mile south of Wildwood Drive (south City limits)	60

US Highway 34/281-NB	Husker Highway	Approximately 300 feet north of Schimmer Drive	55
US Highway 34/281	Milepost No. 228.91 (1/4 mile south of Wildwood Drive)	Milepost No. 231.16 (Husker Highway)	55
US Highway 281	Milepost No. 67.6 (Husker Highway)	Milepost No. 68.1 (south intersection with Webb Road)	55
US Highway 281	Milepost No. 68.1 (south intersection with Webb Road)	Milepost 68.9 (UPRR and Old Highway 30 Overpass)	50
US Highway 281	Milepost No. 68.9 (UPRR and Old Highway 30 Overpass)	Milepost No. 72 (NE Highway 2)	45
US Highway 281	Approximately 875 feet west of north Webb Road intersection (city limits)	North Webb Road intersection (city limits)	55
U.S. Highway 281	Approximately 2,440 feet west of Broadwell Avenue (city limits)	Broadwell Avenue (city limits)	55

Alternatives

It appears that the Council has the following alternatives concerning the issue at hand. The Council may:

1. Move to approve
2. Refer the issue to a Committee
3. Postpone the issue to future date
4. Take no action on the issue

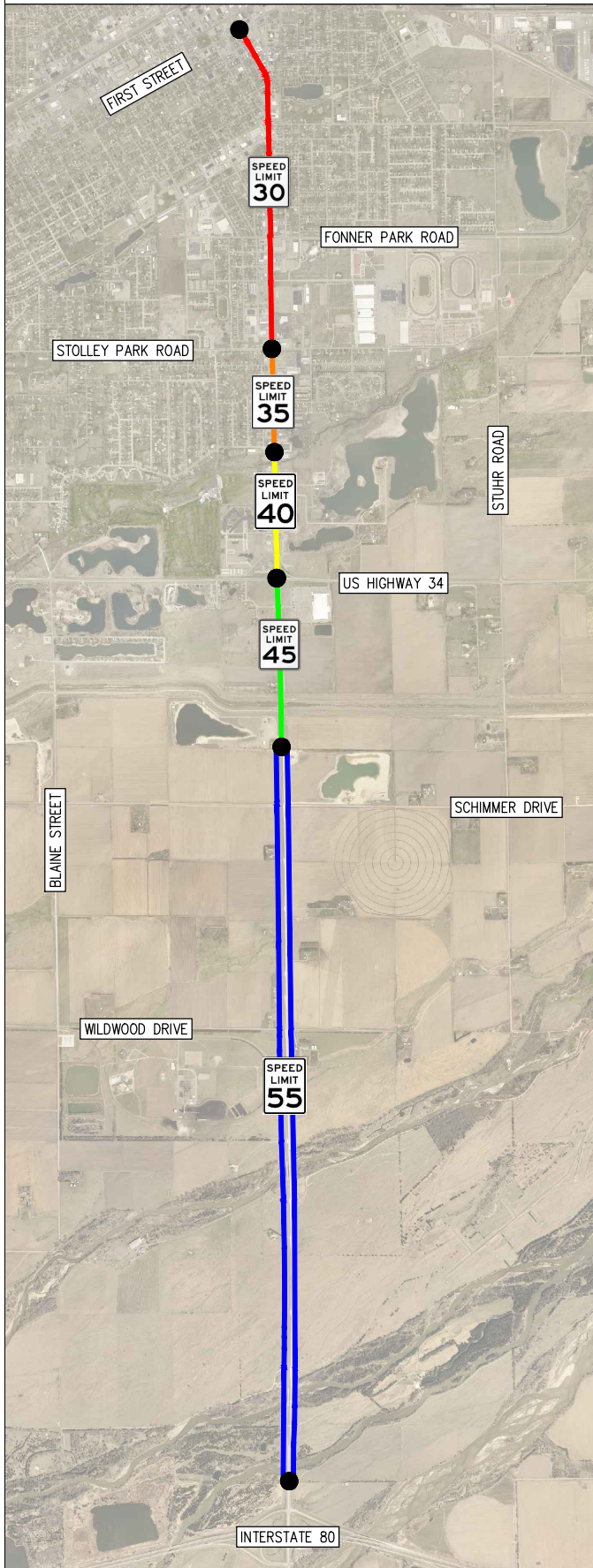
Recommendation

City Administration recommends that the Council pass a resolution making the speed limit adjustments recommended by the Engineering Division of the Public Works Department.

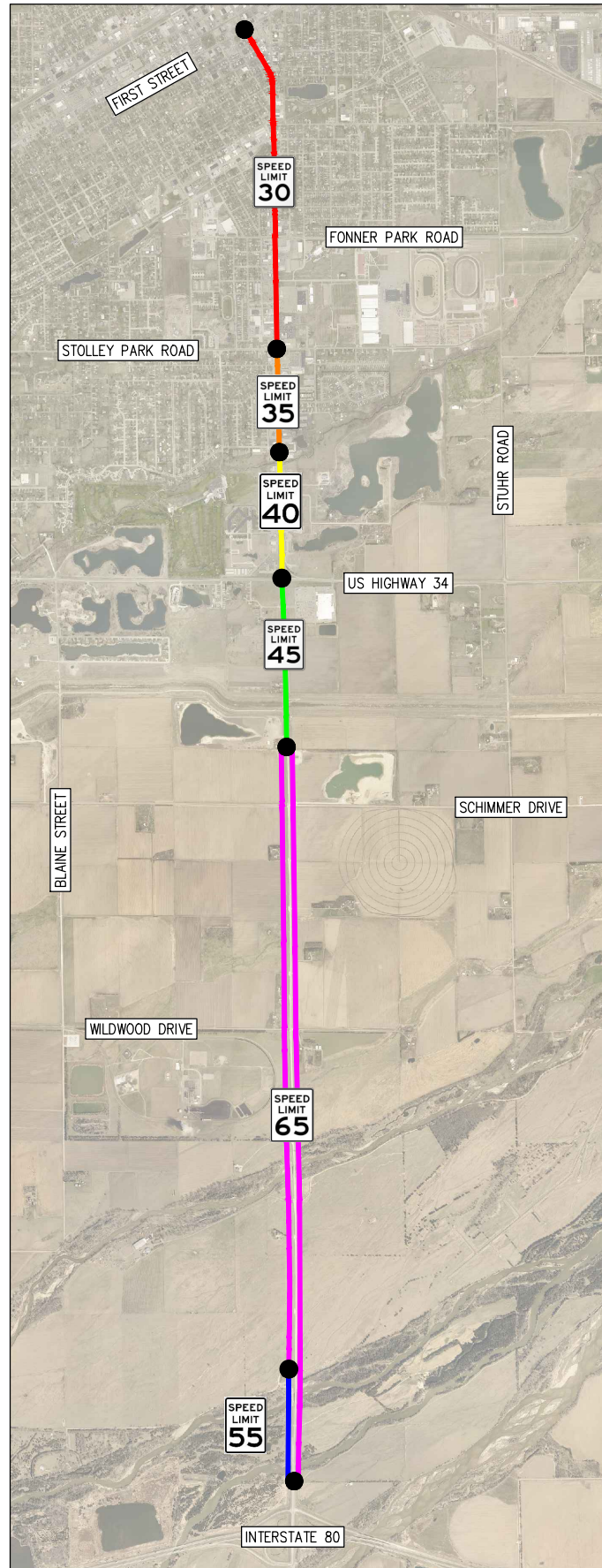
Sample Motion

Move to approve the speed limit changes.

EXISTING



PROPOSED

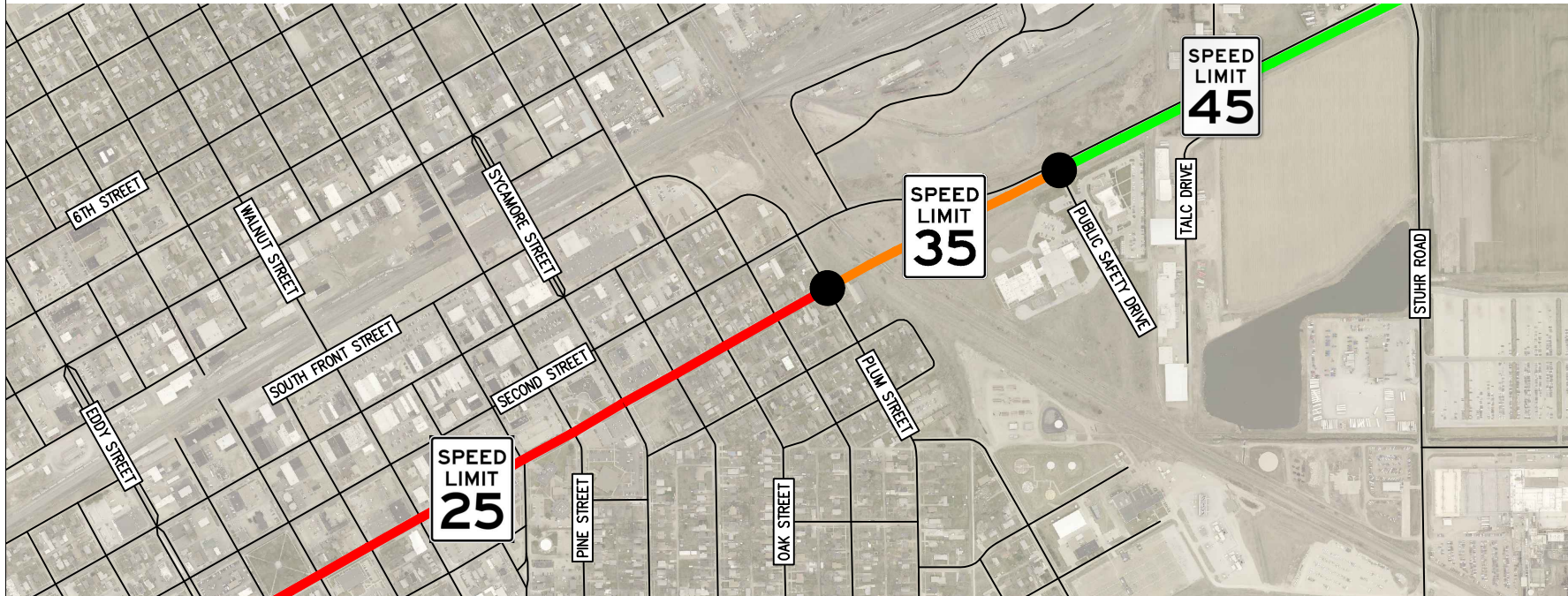


PROPOSED SOUTH LOCUST SPEED LIMIT CHANGES

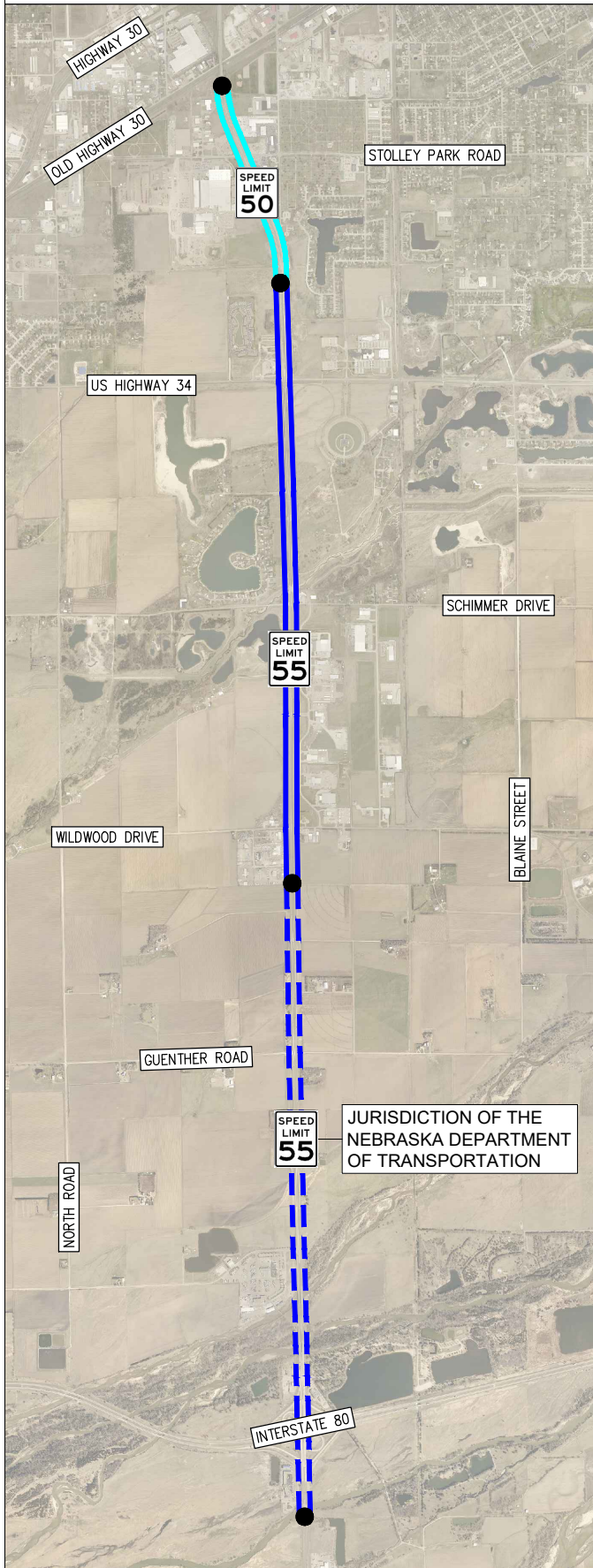
EXISTING



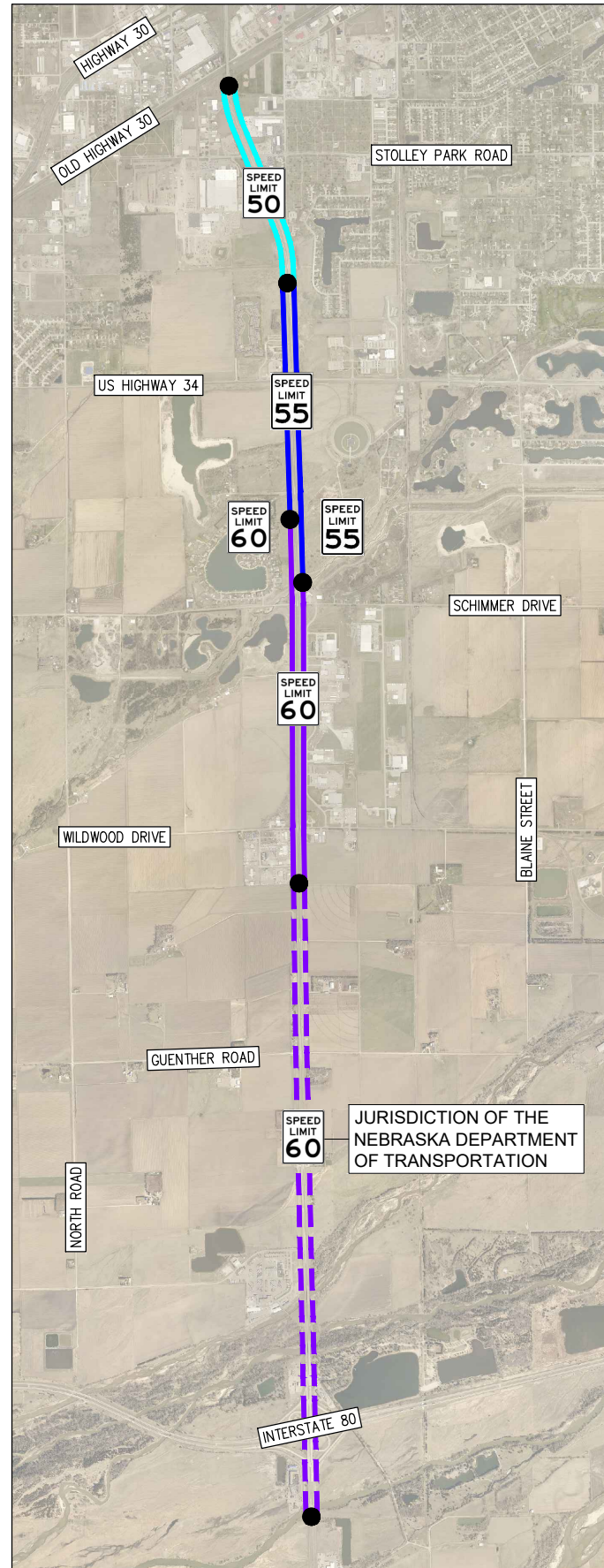
PROPOSED



EXISTING



PROPOSED



PROPOSED HIGHWAY 281 SPEED LIMIT CHANGES WITH NDOT

RESOLUTION 2018-300

WHEREAS, the City Council, by authority of Section 22-51 of the Grand Island City Code, may be resolution, establish speed limits upon the streets of the City of Grand Island.

NOW, THEREFORE, BE IT RESOLVED BY THE MAYOR AND COUNCIL OF THE CITY OF GRAND ISLAND, NEBRASKA, that speed limits within the City of Grand Island are established as follows:

STREET	FROM	TO	LIMIT
Abbott Road	½ mile west of Sky Park Road (city limit)	Sky Park Road	50
Abbott Road	Quandt Road	Approximately 300 feet east of Quandt Road (city limit)	50
Adams Street	Stolley Park Road	Anna Street	30
Airport Road	Approximately 780 feet west of Webb Road (city limits)	Webb Road (city limits)	50
Airport Road	U.S. Highway 281	Approximately 480 feet east of U.S. Highway 281 (city limits)	50
Airport Road	¼ mile west of Sky Park Road (city limits)	Sky Park Road	55
Airport Road	Shady Bend Road	Approximately 3,300 feet east of Shady Bend Road (east city limits)	50
Anna Street	Blaine Street	Locust Street	30
Bismark Road	Vine Street	Stuhr Road	30
Bismark Road	Stuhr Road	Approximately 3,800 feet east of Stuhr Road (city limit)	45
Blaine Street	Approximately ½ mile south of Wildwood Drive West (city limits)	Schimmer Drive West (city limits)	50
Blaine Street	Wood River Diversion Ditch/Bike Trail (city limits)	U.S. Highway 34	45
Blaine Street	U.S. Highway 34	Stolley Park Road	35
Blaine Street	Stolley Park Road	Old Potash Highway/Old Lincoln Highway	30

Approved as to Form ☐ _____
October 8, 2018 ☐ City Attorney

Broadwell Avenue	Anna Street	Prospect Avenue	30
Broadwell Avenue	Prospect Avenue	Nebraska Highway 2 (city route)	35
Broadwell Avenue	Nebraska Highway 2 (city route)	U.S. Highway 281 (city limits)	45
Capital Avenue	Engleman Road	North Road	35
Capital Avenue	North Road	NE Central Railroad Tracks (approximately 1,740 feet east of St. Paul Road)	40
Capital Avenue	NE Central Railroad Tracks (approximately 1,740 feet east of St Paul Road)	Sky Park Road	45
Capital Avenue	Sky Park Road	½ mile east of Sky Park Road (city limits)	50
Cherry Street	Bismark Road	Sutherland Street	30
Concord Street	Diers Avenue	370 feet north of Diers Avenue	30
Custer Avenue	Old Lincoln Highway/ Old Potash Highway	Capital Avenue	30
Diers Avenue	Old Potash Highway	Capital Avenue	30
Eddy Street	Fourth Street	State Street	30
Engleman Road	Husker Highway (city limits)	Approximately 400 feet north of North Lane (city limits)	45
Engleman Road	½ mile south of Old Potash Highway (city limits)	Approximately 660 feet south of Old Potash Highway (city limits)	45
Engleman Road	Approximately 200 feet south of Lariat Lane (city limits)	Capital Avenue	45
Engleman Road	Capital Avenue	Approximately 1,000 feet north of Michigan Avenue (city limits)	45
Faidley Avenue	North Road	Diers Avenue	40
Faidley Avenue	Diers Avenue	Webb Road	35
Faidley Avenue	Webb Road	Custer Avenue	30
Fonner Park Road	South Locust Street	Stuhr Road	35
Fourth Street	Sycamore Street	Plum Street	25
Fourth Street	Plum Street	Beal Street	30
Fourth Street	Beal Street	Taft Street	35
Fourth Street	Taft Street	Seventh Street	45

Gold Core Road	Wildwood Drive	Schimmer Drive	40
Husker Highway	U.S. Highway 30	Schroeder Avenue	50
Husker Highway	Schroeder Avenue	U.S. Highway 281	40
Juergen Road	Wildwood Drive	Schimmer Drive	30
Locust Street- NB	Approximately 1,200 feet north of Interstate 80 (city limits)	Approximately 1,300 feet north of Schimmer Drive	65
Locust Street- SB	Camp Augustine	Approximately 1,200 feet north of Interstate 80 (city limits)	55
Locust Street- SB	Approximately 1,300 feet north of Schimmer Drive	Camp Augustine	65
Locust Street	Approximately 1,300 feet north of Schimmer Drive	U.S. Highway 34	45
Locust Street	U.S. Highway 34	Stagecoach Road	40
Locust Street	Stagecoach Road	Stolley Park Road	35
Locust Street	Stolley Park Road	Charles Street	30
Locust Street	Charles Street	First Street	25
Nebraska Highway 2	½ mile west of Independence Avenue (west city limits)	1,200 feet west of Diers Avenue	55
Nebraska Highway 2	1,200 feet west of Diers Avenue	100 feet west of O'Flannagan Street	50
Nebraska Highway 2 – City Route	100 feet west of O'Flannagan Street	Broadwell Avenue	50
North Road	Husker Highway	Stolley Park Road	35
North Road	Old Highway 30	U.S. Highway 30	35
North Road	U.S. Highway 30	Old Potash Highway	45
North Road	Old Potash Highway	Nebraska Highway 2	40
Old Lincoln Highway	Custer Avenue	Broadwell Avenue	30
Old Highway 30	West intersection with U.S. Highway 30	Webb Rod	45
Old Highway 30	Webb Road	East intersection with U.S. Highway 30	35
Old Potash Highway	1,500 feet west of Arapahoe Avenue (west city limits)	Kaufman Avenue	45

Old Potash Highway	Kaufman Avenue	Custer Avenue	35
Quandt Road	Abbott Road	¼ mile north of Abbott Road	50
Schimmer Drive	½ mile west of U.S. Highway 281 (west city limits)	Blaine Street (east city limits)	40
Second Street	Webb Road	Ada Street	35
Seedling Mile Road	½ mile west of Museum Drive	Shady Bend Road	35
Seedling Mile Road	Shady Bend Road	Approximately ¼ mile east of Shady Bend Road (east city limits)	45
Shady Bend Road	50 feet north of Arabian Circle (city limits)	231 feet south of Gregory Avenue	45
Shady Bend Road	231 feet south of Gregory Avenue (city limits)	Union Pacific Railroad Right-of-Way (city limits)	35
Shady Bend Road	1,910 feet north of Capital Avenue	Airport Road	55
Sky Park Road	Seventh Street	Capital Avenue	45
Sky Park Road	Capital Avenue	Twin Star Lane	55
Sky Park Road	Twin Star Lane	Gulf Stream Drive	45
Sky Park Road	Gulf Stream Drive	White Cloud Road	55
State Street	North Road	Moore's Creek	40
State Street	Moore's Creek	Webb Road	35
Stolley Park Road	920 feet west of Freedom Drive (west city limits)	U.S. Highway 30	50
Stolley Park Road	U.S. Highway 30	U.S. Highway 281	45
Stolley Park Road	U.S. Highway 281	Stuhr Road	35
Stuhr Road	270 feet south of the north intersection with Stolley Park Road (south city limits)	Fonner Park Road	45
Stuhr Road	Fonner Park Road	U.S. Highway 30	35
Sycamore Street	Fourth Street	Capital Avenue	30
Thirteenth Street	910 feet west of Branding Iron Lane (west city limits)	Cedar Ridge Court	40
Thirteenth Street	Cedar Ridge Court	Webb Road	35
U.S. Highway 30	Husker Highway	Johnstown Road	55
U.S. Highway 30	Johnstown Road	East Intersection with Old Highway 30	45
U.S. Highway 30	East Intersection with Old Highway 30	Greenwich Street	35

U.S. Highway 30 (eastbound)/ Greenwich Street	Second Street	First Street	30
U.S. Highway 30 (1st Street and 2nd Street)	Greenwich Street	Eddy Street	30
U.S. Highway 30 (1st Street and 2nd Street)	Eddy Street	Sycamore Street	25
U.S. Highway 30 (2nd Street)	Public Safety Drive	Sycamore Street	35
US Highway 30 (1 st Street)	Sycamore Street	Plum Street	25
US Highway 30 (1 st Street)	Plum Street	Public Safety Drive	35
U.S. Highway 30	Public Safety Drive	2,500 feet west of Shady Bend Road	45
U.S. Highway 30	2,500 feet west of Shady Bend Road	Shady Bend Road (east city limits)	50
U.S. Highway 34 (Husker Highway)	U.S. Highway 281	Wortman Drive (city limits)	45
U.S. Highway 34 (Husker Highway)	Wortman Drive (Begin NDOT jurisdiction)	Blaine Street (End NDOT jurisdiction)	50
U.S. Highway 34 (Husker Highway)	Blaine Street	Approximately ¼ mile west of Locust Street (DeAnn Road)	50
U.S. Highway 34 (Husker Highway)	Approximately ¼ mile west of Locust Street (DeAnn Road)	¼ mile east of Locust Street (east city limits)	45
US Highway 34/281- SB	Rae Road	Husker Highway	55
US Highway 34/281- SB	¼ mile south of Wildwood Drive (south city limits)	Rae Road	60
US Highway 34/281- NB	Approximately 300 feet north of Schimmer Drive	¼ mile south of Wildwood Drive (south City limits)	60
US Highway 34/281- NB	Husker Highway	Approximately 300 feet north of Schimmer Drive	55
US Highway 281	Milepost No. 67.6 (Husker Highway)	Milepost No. 68.1 (south intersection with Webb Road)	55
US Highway 281	Milepost No. 68.1 (south intersection with Webb Road)	Milepost 68.9 (UPRR and Old Highway 30 Overpass)	50

US Highway 281	Milepost No. 68.9 (UPRR and Old Highway 30 Overpass)	Milepost No. 72 (NE Highway 2)	45
US Highway 281	Approximately 875 feet west of north Webb Road intersection (city limits)	North Webb Road intersection (city limits)	55
U.S. Highway 281	Approximately 2,440 feet west of Broadwell Avenue (city limits)	Broadwell Avenue (city limits)	55
Walnut Street	Charles Street	First Street	30
Webb Road	South Intersection with U.S. Highway 281	Nebraska Highway 2 (city route)	35
Webb Road	Nebraska Highway 2 – city route	1,410 feet north of Nebraska Highway 2 – city route (city limits)	40
Webb Road	900 feet south of the north intersection with U.S. Highway 281 (city limits)	210 feet north of the north intersection with U.S. Highway 281 (city limits)	40
White Cloud Road	Sky Park Road	2,060 feet east of Sky Park Road (city limits)	50
Wildwood Drive	380 feet west of Elk Drive (west city limits)	610 feet east of Gold Core Drive (city limits)	45
Wildwood Drive	¼ mile west of Blaine Street (city limits)	Locust Street South	55

OTHER SPEED ZONES:

The speed limit for all alleys within the downtown Congested Parking Area as defined in Section 13-17 of the Grand Island City Code shall be 10 miles per hour.

BE IT FURTHER RESOLVED, that this resolution supersedes any and all other resolutions establishing or amending speed limits for the City of Grand Island.

- - -

Adopted by the City Council of the City of Grand Island, Nebraska, October 9, 2018.

Jeremy L. Jensen, Mayor

Attest:

RaNae Edwards, City Clerk