



City of Grand Island

Tuesday, September 11, 2018

Council Session

Item G-11

#2018-263 - Approving Acquisition of Utility Easement - East Side of Diamond Drive between Warbler Road and Meadow Way Trail - TPRC - Umbrella - Erickson

This item relates to the aforementioned Public Hearing item E-4.

Staff Contact: Tim Luchsinger, Stacy Nonhof

RESOLUTION 2018-263

WHEREAS, a public utility easement is required by the City of Grand Island from TPCR Developments, LLC, Umbrella Development, LLC, and Donald R. and Jeri L. Erickson, to survey, construct, inspect, maintain, repair, replace, relocate, extend, remove, and operate thereon, public utilities and appurtenances, including lines and transformers; and;

WHEREAS, a public hearing was held on September 11, 2018, for the purpose of discussing the proposed acquisition of a twenty (20.0) foot utility easement located through a part of Lots Eleven (11), Lot Twelve (12), Lot Thirteen (13), Lot Fourteen (14), Lot Fifteen (15), and Lot Sixteen, Summerfield Estates Tenth Subdivision, in the City of Grand Island, Hall County, Nebraska, more particularly described as:

The easterly seven (7.0) feet of the westerly fourteen (14.0) feet of Lot Eleven (11), Lot Twelve (12), Lot Thirteen (13), Lot Fourteen (14), Lot Fifteen (15), and Lot Sixteen (16), Summerfield Estates Tenth Subdivision, Grand Island, Hall County, Nebraska.

The above-described easement and right-of-way containing a total of 0.07 acres more or less, as shown on the plat dated December 1, 2017, marked Exhibit "A", attached hereto and incorporated herein by reference.

NOW, THEREFORE, BE IT RESOLVED BY THE MAYOR AND COUNCIL OF THE CITY OF GRAND ISLAND, NEBRASKA, that the City of Grand Island be, and hereby is, authorized to acquire a public utility easement from TPCR Developments LLC, Umbrella Development, LLC, and Donald R. and Jeri L. Erickson, on the above-described tract of land.

- - -

Adopted by the City Council of the City of Grand Island, Nebraska, September 11, 2018

Jeremy L. Jensen, Mayor

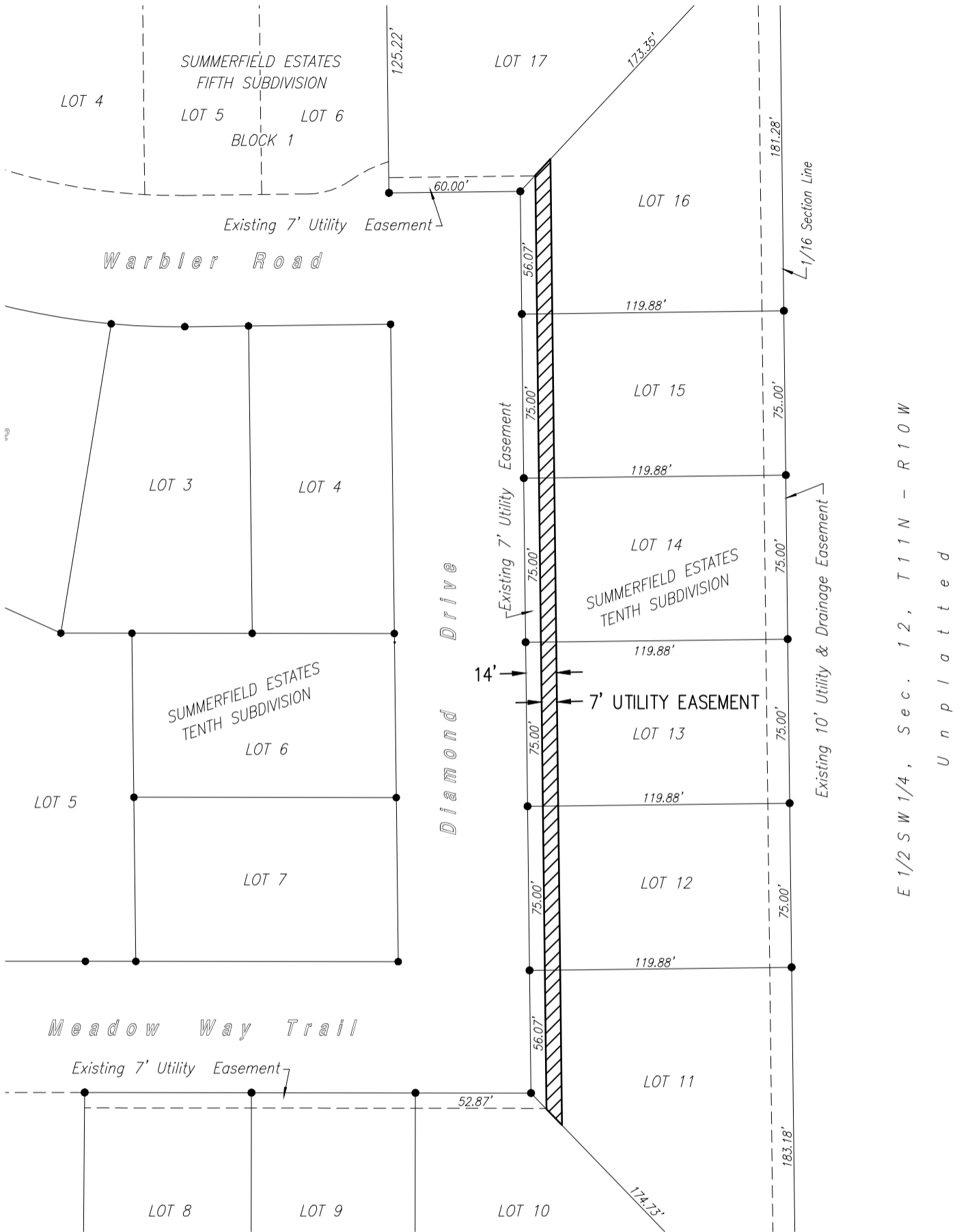
Attest:

RaNae Edwards, City Clerk

Approved as to Form	☐ _____
September 7, 2018	☐ City Attorney

-UTILITY EASEMENT-

THE EAST 7' OF THE WEST 14' OF LOTS 11-16, SUMMERFIELD ESTATES
TENTH SUBDIVISION, TO THE CITY OF GRAND ISLAND, HALL COUNTY, NEBRASKA

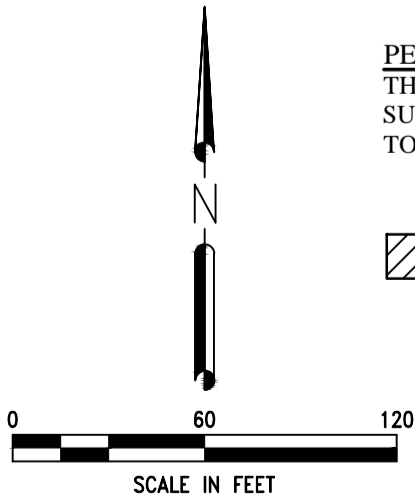


E 1/2 SW 1/4, Sec. 12, T11N - R10W
Unplatted

PERMANENT UTILITY EASEMENT
THE EAST 7' OF THE WEST 14' OF LOTS 11-16,
SUMMERFIELD ESTATES TENTH SUBDIVISION,
TO THE CITY OF GRAND ISLAND, HALL COUNTY, NEBRASKA

 = 7' UTILITY EASEMENT

EXHIBIT A



 Miller & Associates 1111 CENTRAL AVENUE KEARNEY, NE 68847-6833 Tel: 308-234-6456 Fax: 308-234-1146 www.miller-engineers.com	PARTY CHIEF: Brent D. Cyboron	SURVEY COMPLETED: DECEMBER 1, 2017
	DRAWN BY: A. Olson	REVISION
		DATE & REASON
SUMMERFIELD ESTATES TENTH SUB., GRAND ISLAND, NE		