



# City of Grand Island

Tuesday, December 12, 2017

Council Session

## Item E-2

### **Public Hearing on Annual Report by the Grand Island Area Economic Development Corporation/Citizen Advisory Review Committee on the Economic Development Program Plan**

*Council action will take place under Resolution item I-2.*

Staff Contact: Dave Taylor - EDC Precident

# **Council Agenda Memo**

**From:** Marlan Ferguson, City Administrator

**Meeting:** December 12, 2017

**Subject:** Public Hearing Concerning the Annual Report by the Citizen Advisory Review Committee on the Economic Development Program Plan

**Presenter(s):** Dave Taylor, EDC President

## **Background**

The voters of the City of Grand Island approved an economic development plan at the November 6, 2012 election. Subsequent to the election, the city has adopted an ordinance that establishes the economic development plan and a Citizen Advisory Review Committee to oversee the process of approving applications for economic development incentives. The Citizen Advisory Review Committee is required by State Statute and the Grand Island City Code to make an annual report to the City Council.

## **Discussion**

The Citizen Advisory Review Committee has been conducting regular meetings during the last six months as required by the City Code and the Nebraska Statutes. The committee looks forward to receiving and reviewing meritorious applications for consideration in the future. The committee received the annual report from the Economic Development Corporation at its meeting of December 7, 2017 and voted to forward it on to the City Council for its review and acceptance.

## **Alternatives**

It appears that the Council has the following alternatives concerning the issue at hand. The Council may:

1. Accept the annual report of the Citizen Advisory Review Committee.
2. Do not accept the annual report of the Citizen Advisory Review Committee.

### **Recommendation**

City Administration recommends that the Council accept the annual report of the Citizen Advisory Review Committee.

### **Sample Motion**

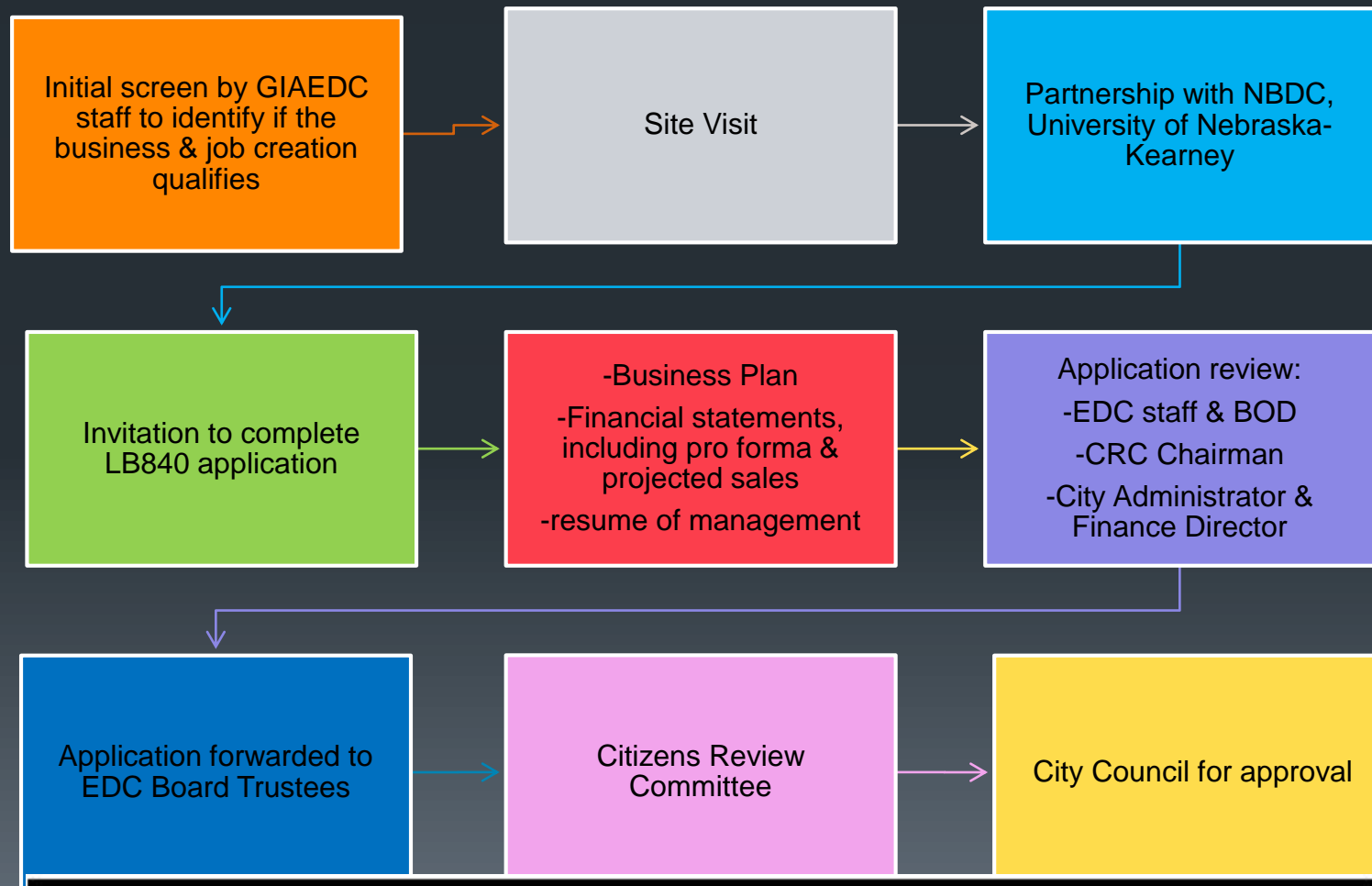
Move to accept the annual report of the Grand Island Area Economic Development Corporation/Citizen Advisory Review Committee.



## Annual Update



# LB840 Application Process





# Active LB840 Projects

- GIX Logistics
  - Add 26 employees
  - Expires 2019
- Inland Truck Parts
  - Add 11 employees
  - Expires 2019
- Borer Wholesale
  - Add 8 employees
  - Expires 2019
- Hendrix Genetics
  - Add 43 employees
  - Expires 2020



Grand Island Area  
Economic  
Development  
Corporation

# RIMS II

- Direct effect
- Employment



- Earnings





# LB840 Impacts

LB840 Funds invested in Job Creation:

**\$5,144,100**

Jobs Created:

**1025**

Annual Wages Created from Incentives:

**\$31,606,536**

2015-2017 Average Wage Per Job Created:

**\$18.00**





# LB840 Funding Status

LB840 balance as of 12/1/2017	\$1,028,623
LB840 job creation funds for GIX Logistics	(\$49,500)
LB840 Borer Wholesale	(\$43,750)
Inland Truck	(\$164,810)
Hendrix Genetics	(\$393,334)
2017 EDC marketing funds	0
LB840 job creation funds *as of 8/30/2017	\$377,229



Grand Island Area  
Economic  
Development  
Corporation

# Inland Truck Parts & Service Progress





Grand Island Area  
Economic  
Development  
Corporation







Grand Island Area  
Economic  
Development  
Corporation







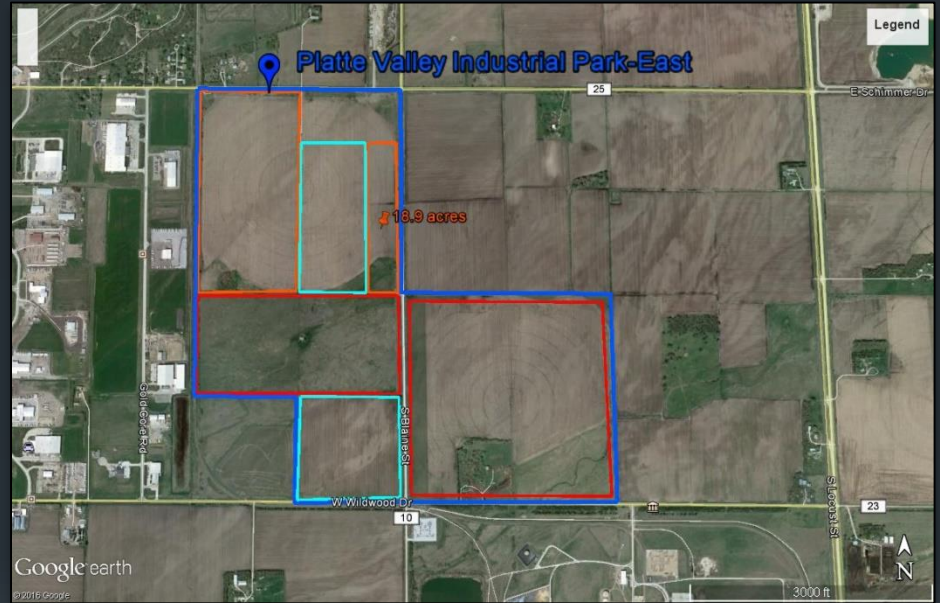


Grand Island Area  
Economic  
Development  
Corporation





Cornhusker Industrial Park (230 acres)



Platte Valley Industrial Park (2 lots / 9.3 acres)  
Platte Valley Industrial Park- East (260 acres)  
Homestead (160 acres)



# Current Projects

- Project Stanley
- Project Packaging
- Project Wood Chuck
- Project Swap
- Project Horizon
- Project Chabot
- Project Maple
- Project Silver Bullet
- Project Maverick
- Project Penny
- Project Ozarks





**Grand Island Area**  
Economic  
Development  
Corporation



**Grand Island Area**  
Economic Development Corporation

GRAND ISLAND, NE 308-381-7500

EN ESPAÑOL

SEARCH

GET IN TOUCH

Key Industries

Why Grand Island?

Workforce

Start A Business

Membership

About GIAEDC

## Active Projects

CALL US AT 308-381-7500

PRINT SHARE

HOME » WHY GRAND ISLAND? » ACTIVE PROJECTS

### Active Projects

Get the scoop on what's happening around Grand Island. From new business, to renovations and expansions, check out progress updates on Grand Island active projects.



#### Fresh Thyme Farmer's Market

3035 West 13th Street  
RETAIL

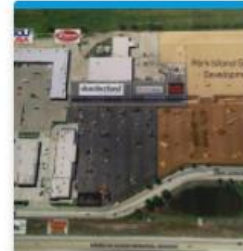
[View Project](#)



#### Heartland Public Shooting Park

6788 West Husker Highway  
RECREATION

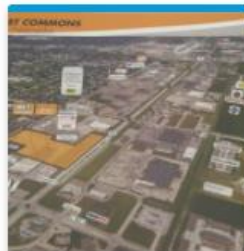
[View Project](#)



#### Park Island Square

3537 West 13th Street  
RETAIL - TIF

[View Project](#)



#### Burlington Coat



#### Bosselman Corporate



#### Hedde Building

### Why Grand Island?

Community Profile

How To Get Here

Incentive Packages

Transportation

Infrastructure

Active Projects

Bosselman Corporate Headquarters  
Hedde Building  
Park Island Square  
Burlington Coat Factory  
Hendrix Genetics- COMPLETE!  
Labor Temple Building  
Heartland Public Shooting Park  
Fresh Thyme Farmer's Market  
Bartenbach Building

### Site Selection

Interested in Grand Island? Get to know our city and find out why our opportunities are better for your business.

[EXPLORE GRAND ISLAND](#)

### Business Development

From tax incentives to available properties, learn how you can make the most of Grand Island's opportunities.

[GROW YOUR BUSINESS](#)



Grand Island Area  
Economic  
Development  
Corporation

Page Inbox 1 Notifications 57 Insights Publishing Tools



Grand Island Area  
Economic  
Development  
Corporation  
@GrandIslandEDC

#### Home

About  
Events  
Photos  
Videos  
Community  
Groups  
Reviews  
Jobs  
Posts

Promote

Manage Promotions

Liked Following Share



Write a comment...



#### Grand Island Area Economic Development Corporation

Published by Mary Lewis Berlie [?] · October 4 at 2:51pm ·

Developers Amos and John Anson are at it again! The historic Bartenbach Art Gallery building will be getting a make over. The Anson guys will preserve the history and beauty of the building, while giving it a trendy flair- one that makes Railside so unique and cool! Watch for updates- renovations should be complete in ONE month! Welcome to Railside, Sonya Schultz and Cassie Price!



#### Bartenbach Building | Grand Island, NE | GIAEDC

Amos & John Anson, brothers and developers, are at it again!

GRANDISLAND.ORG

5,989 people reached

Boost Post

Like Comment Share

Page Inbox Notifications 2 Insights Publishing Tools



A Grandier Vision  
for the Heartland!

#### Grow Grand Island

@GrowGrandIsland

#### Home

About  
Photos  
Events  
Videos  
Posts  
Community

Promote

Manage Promotions

Liked Following Share



Write a comment...



#### Grow Grand Island shared Grand Island Area Economic Development Corporation's post

Published by Mary Lewis Berlie [?] · October 4 at 2:52pm ·



#### Grand Island Area Economic Development Corporation

Published by Mary Lewis Berlie [?] · October 4 at 2:51pm ·

Developers Amos and John Anson are at it again! The historic Bartenbach Art Gallery building will be getting a make over. The Anson guys will preserve the histo...

See More



#### Bartenbach Building | Grand Island, NE | GIAEDC

Amos & John Anson, brothers and developers, are at it again!

GRANDISLAND.ORG

4,097 people reached

Boost Post

Like Comment Share

Grow Grand Island, Jeannie Marie O'Connor, Tonja Brown and 18 others



Write a comment





Hello, GIAEDC!

You are on Lite plan

[Upgrade Now](#)



**Widget**  
Embed and customize the chat widget on your website



**Visitors**  
See a list of all your web visitors and chat with them

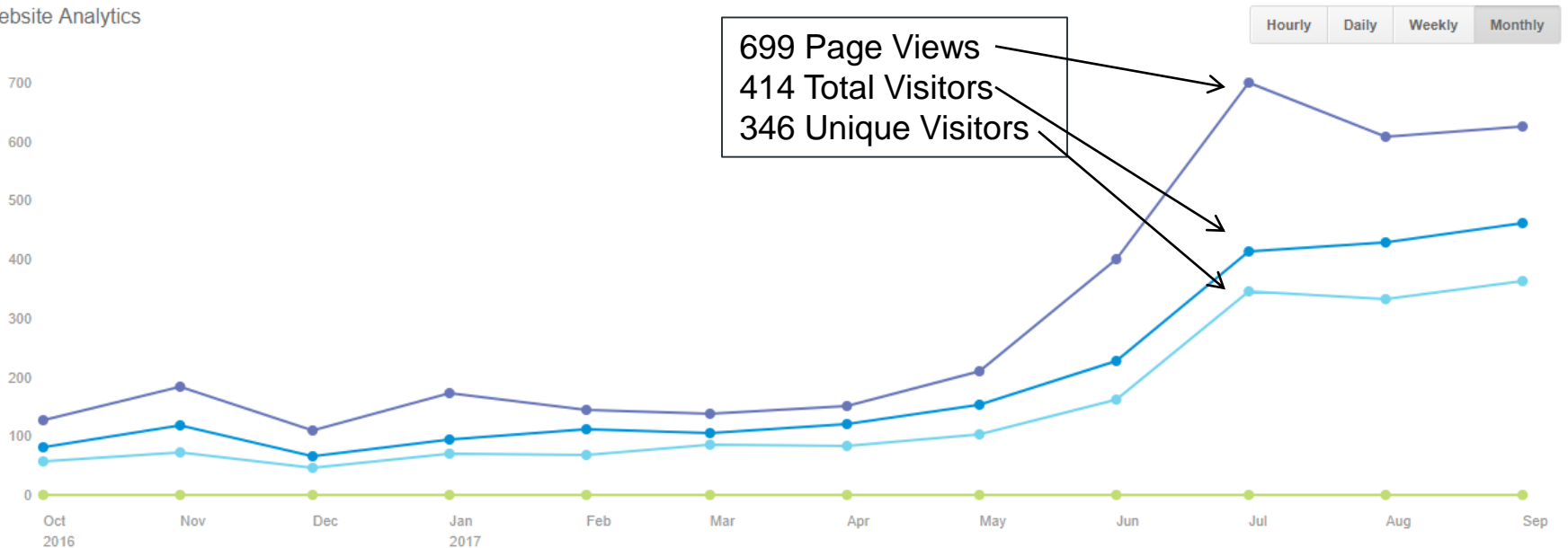


**Analytics**  
Track the chats you have with customers



**Triggers**  
Send chat invites or custom messages to pre-qualified leads

## Website Analytics





Grand Island Area  
Economic  
Development  
Corporation



93

BRE visits with businesses

21

Inbound marketing visits

8

Outbound marketing visits

27

DED Partnerships

13

City & State initiatives



# EDC Mission

- *The Grand Island Area Economic Development Corporation (GIAEDC) focuses on new business attraction and local business expansion and efficiency. The GIAEDC concentrates on wealth-producing business opportunities and has the ability to offer LB840 job incentive funds.*

# Utilization of LB840 Operating Funds

## Community Marketing

\$170,900

48.9%

Community Support  
\$27,000

Prospect Development  
\$97,600

Website Maintenance  
\$8,000

Video  
\$15,500

Travel  
\$7,000

Professional Fees  
\$15,800

## Office

\$8,000

2.2%

Office  
Equipment/Repairs  
\$3,000

Supplies/Software  
\$5,000

## Occupancy

\$26,200

7.5%

Rent  
\$16,000

Utilities  
\$0

Telecommunications  
\$5,000

Insurance  
\$4,000

Janitorial  
\$1,200

## Administration

\$141,000

40.3%

Salaries  
\$121,900

Insurance/Retirement  
\$5,000

Conference Fees  
\$3,000

Employment Taxes  
\$15,000



# Thank you!

The GIAEDC staff and Board of Trustees request approval of \$350,000 in LB840 operating funds for 2018.

