



City of Grand Island

Tuesday, November 14, 2017

Council Session

Item E-4

Public Hearing on Acquisition of Utility Easement - South of One-R Road and West of Hwy. 281 - Petersen

Council action will take place under Consent Agenda item G-10.

Staff Contact: Tim Luchsinger, Stacy Nonhof

Council Agenda Memo

From: Tim Luchsinger, Utilities Director
Stacy Nonhof, Assistant City Attorney

Meeting: November 14, 2017

Subject: Acquisition of Utility Easement – South of One-R Road
and West of Highway 281 – Douglas and Tamara
Petersen

Presenter(s): Timothy Luchsinger, Utilities Director

Background

Nebraska State Law requires that acquisition of property must be approved by City Council. The Utilities Department needs to acquire utility easement relative to the property of Douglas R. and Tamera K. Petersen, located through a part of the Northwest Quarter (NW ¼), Section Twenty (20), Township Twelve (12) North, Range Nine (9) West of the 6th P.M., Hall County, Nebraska (south of One-R Road and west of Highway 281), in order to have access to install, upgrade, maintain, and repair power appurtenances, including lines and transformers.

Discussion

The farmland in the Northwest Quarter (NW ¼) of Section Twenty (20), Township Twelve (12) North, Range Nine (9) West, is served by the Grand Island Utilities Department. The existing overhead power lines were originally installed approximately 20 years ago without acquiring easements which was common at the time. The proposed easement will allow the Utilities Department to access, extend, operate and maintain power lines for the irrigation wells in the area.

Alternatives

It appears that the Council has the following alternatives concerning the issue at hand. The Council may:

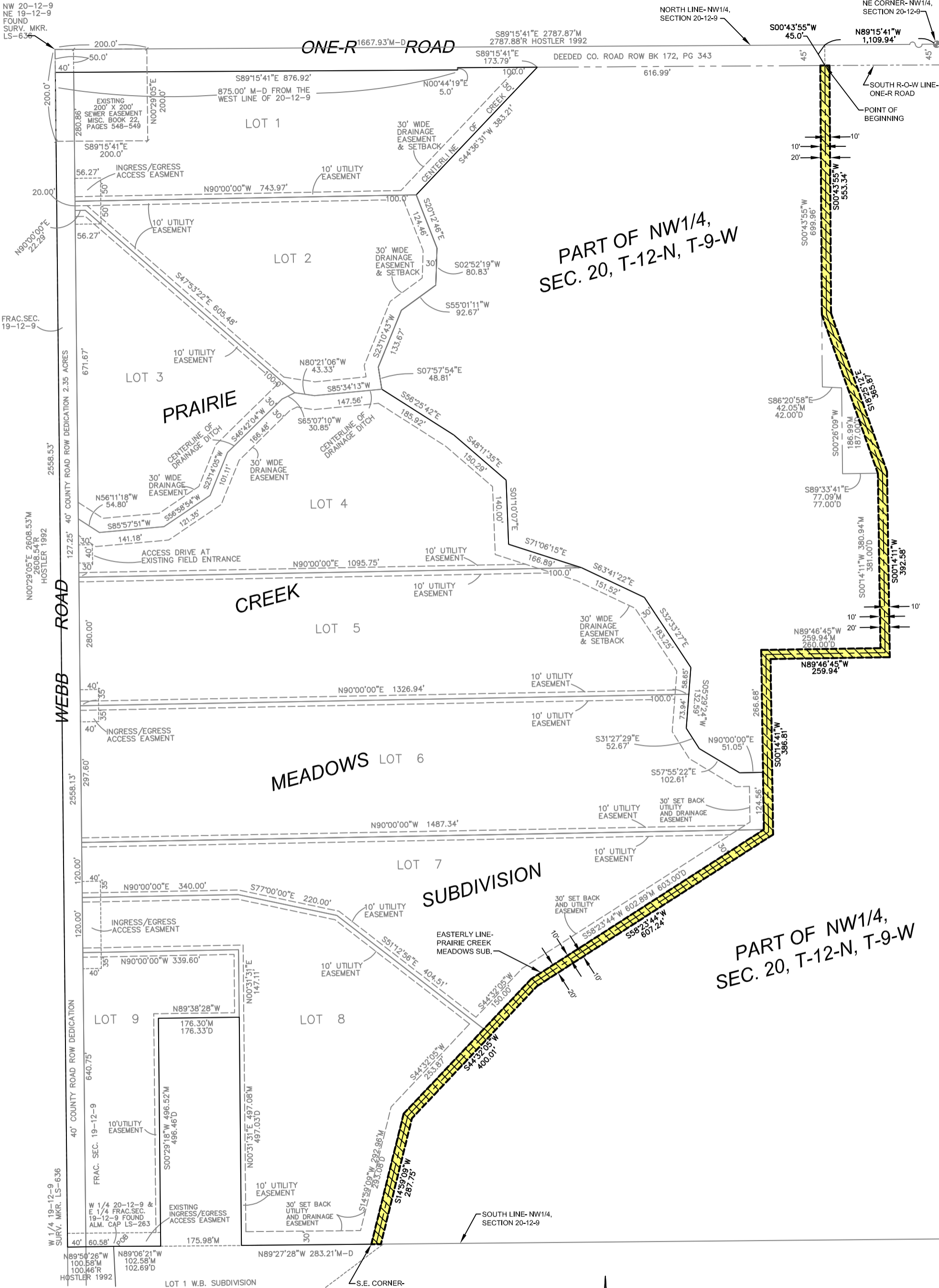
1. Make a motion to approve
2. Refer the issue to a Committee
3. Postpone the issue to future date
4. Take no action on the issue

Recommendation

City Administration recommends that the Council approve the resolution for the acquisition of the easement for one dollar (\$1.00).

Sample Motion


Move to approve acquisition of the Utility Easement.



PART OF NW1/4,
SEC. 20, T-12-N, T-9-W

PART OF NW1/4,
SEC. 20, T-12-N, T-9-W

LEGEND

 INDICATES 20' WIDE
UTILITY EASEMENT



CITY OF
GRAND ISLAND
UTILITIES DEPARTMENT

EXHIBIT "A"

DRN BY: K.J.M. | SCALE: 1"= 200'
DATE: 10/5/2017 | FILE: SX 20-12-9