



# City of Grand Island

Tuesday, October 24, 2017

Council Session

## Item E-3

### **Public Hearing on Acquisition of Utility Easement - 1700 W. Stolley Park Road - Hall County School Dist. 2**

*Council action will take place under Consent Agenda item G-10.*

Staff Contact: Tim Luchsinger, Stacy Nonhof

# **Council Agenda Memo**

**From:** Tim Luchsinger, Utilities Director  
Stacy Nonhof, Assistant City Attorney

**Meeting:** October 24, 2017

**Subject:** Acquisition of Utility Easement – 1700 W. Stolley Park Road – Hall County School District 2

**Presenter(s):** Timothy Luchsinger, Utilities Director

## **Background**

Nebraska State Law requires that acquisition of property must be approved by City Council. The Utilities Department needs to acquire utility easement relative to the property of Hall County School District 2, located through a part of Lot Ninety Three (93) and Lot Ninety Four (94) Haggess Subdivision, in the City of Grand Island, Hall County, Nebraska (1700 W. Stolley Park Road), in order to have access to install, upgrade, maintain, and repair power appurtenances, including lines and transformers.

## **Discussion**

The Grand Island Public School system is in the process of constructing a new elementary school. The requested easement will allow the Utilities Department to extend, operate and maintain the high-voltage underground power lines and a pad-mounted transformer which will provide service to the building and grounds.

## **Alternatives**

It appears that the Council has the following alternatives concerning the issue at hand. The Council may:

1. Make a motion to approve
2. Refer the issue to a Committee
3. Postpone the issue to future date
4. Take no action on the issue

## **Recommendation**

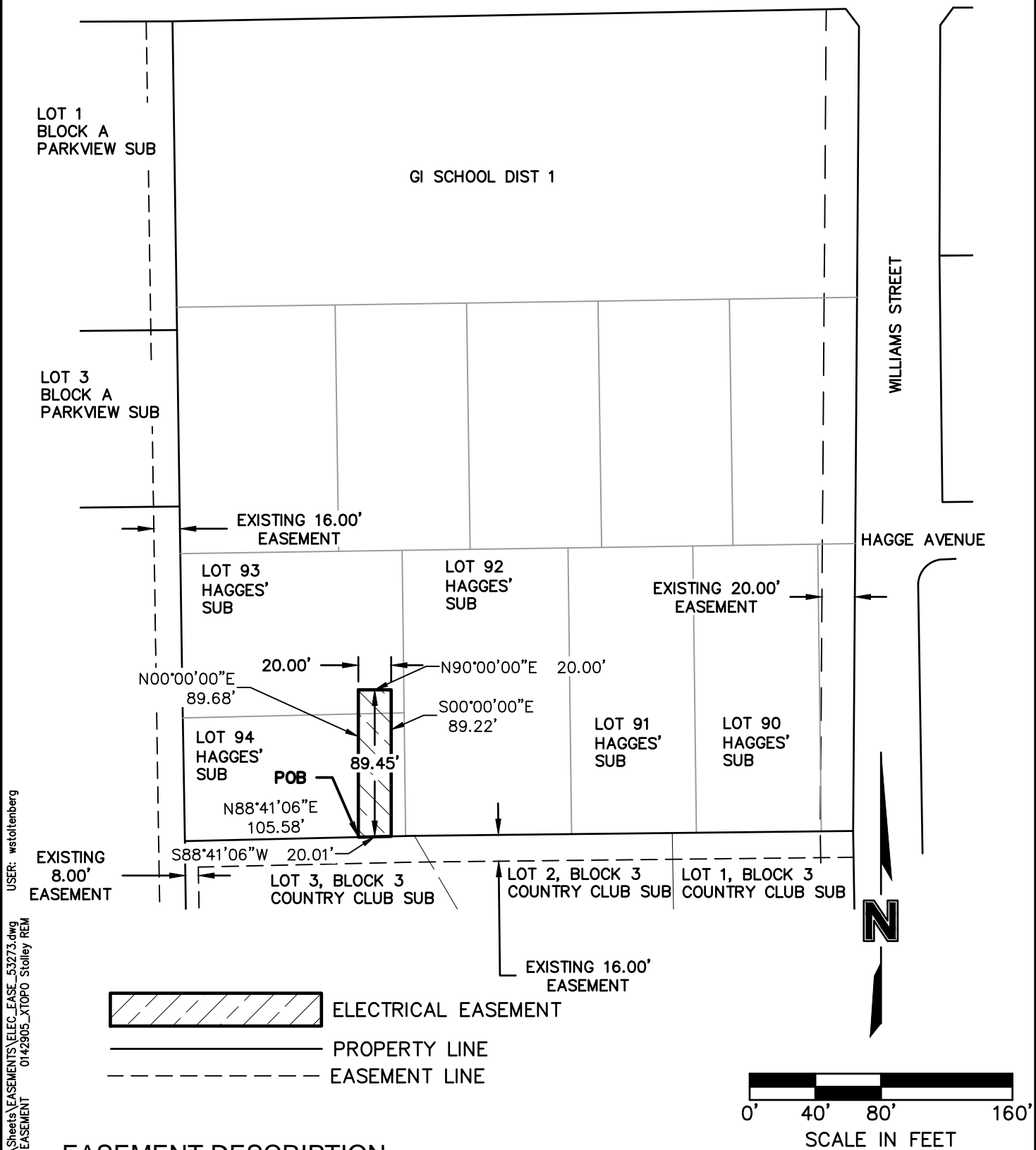
City Administration recommends that the Council approve the resolution for the acquisition of the easement for one dollar (\$1.00).

## **Sample Motion**

Move to approve acquisition of the Utility Easement.

ELECTRICAL EASEMENT  
CITY OF GRAND ISLAND, HALL COUNTY, NEBRASKA

STOLLEY PARK ROAD



EASEMENT DESCRIPTION

AN ELECTRICAL EASEMENT CONSISTING OF PART OF LOT 93 AND 94, HAGGES' SUBDIVISION IN THE CITY OF GRAND ISLAND, HALL COUNTY, NEBRASKA AND MORE PARTICULARLY DESCRIBED AS FOLLOWS:

COMMENCING THE THE SOUTHWEST CORNER OF LOT 94 HAGGES' SUBDIVISION; THENCE ON AN ASSUMED BEARING OF N88°41'06"E, ALONG THE SOUTH LINE OF SAID LOT 94, A DISTANCE OF 105.58 FEET, SAID POINT ALSO BEING THE POINT OF BEGINNING; THENCE N00°00'00"E, A DISTANCE OF 89.68 FEET; THENCE N90°00'00"E, A DISTANCE OF 20.00 FEET; THENCE S00°00'00"E, A DISTANCE OF 89.22 FEET TO THE POINT ON THE SOUTH LINE OF SAID LOT 94; THENCE S88°41'06"W, ALONG THE SOUTH LINE OF SAID LOT 94, A DISTANCE OF 20.01 FEET TO THE POINT OF BEGINNING. SAID ELECTRICAL EASEMENT CONTAINS 1789.07 SQUARE FEET OR .041 ACRES MORE OR LESS.

PROJECT NO:	015-3273
DRAWN BY:	WLS
DATE:	8/17/2017

ELECTRICAL  
EASEMENT



201 East 2nd Street  
P.O. Box 1072  
Grand Island, NE 68802-1072  
TEL 308.384.8750  
FAX 308.384.8752

EXHIBIT
1