



# City of Grand Island

Tuesday, April 25, 2017

Council Session

## Item E-3

### **Public Hearing on Acquisition of Drainage/Utility Easement at 2535 & 2541 Idaho Avenue (Hastings Ventures, LLC)**

*Council action will take place under Consent Agenda item G-8.*

Staff Contact: John Collins, P.E. - Public Works Director

# **Council Agenda Memo**

**From:** John Collins PE, Public Works Director

**Meeting:** April 25, 2017

**Subject:** Public Hearing on Acquisition of Drainage/Utility Easement at 2535 & 2541 Idaho Avenue (Hastings Ventures, LLC)

**Presenter(s):** John Collins PE, Public Works Director

## **Background**

Nebraska State Statutes stipulate that the acquisition of property requires a public hearing to be conducted with the acquisition approved by the City Council.

A public drainage/utility easement is needed within the properties addressed as 2535 Idaho Avenue and 2541 Idaho Avenue to accommodate further development of the Woodland Park 16<sup>th</sup> Subdivision. The easement will allow for the construction, operation, maintenance, extension, repair, replacement, and removal of public utilities within the easement.

## **Discussion**

To allow for further development and the accommodation of public utilities it is requested that a drainage/utility easement be acquired by the City of Grand Island according to the attached sketch. Such easement will be within the properties addressed as 2535 Idaho Avenue and 2541 Idaho Avenue.

## **Alternatives**

It appears that the Council has the following alternatives concerning the issue at hand. The Council may:

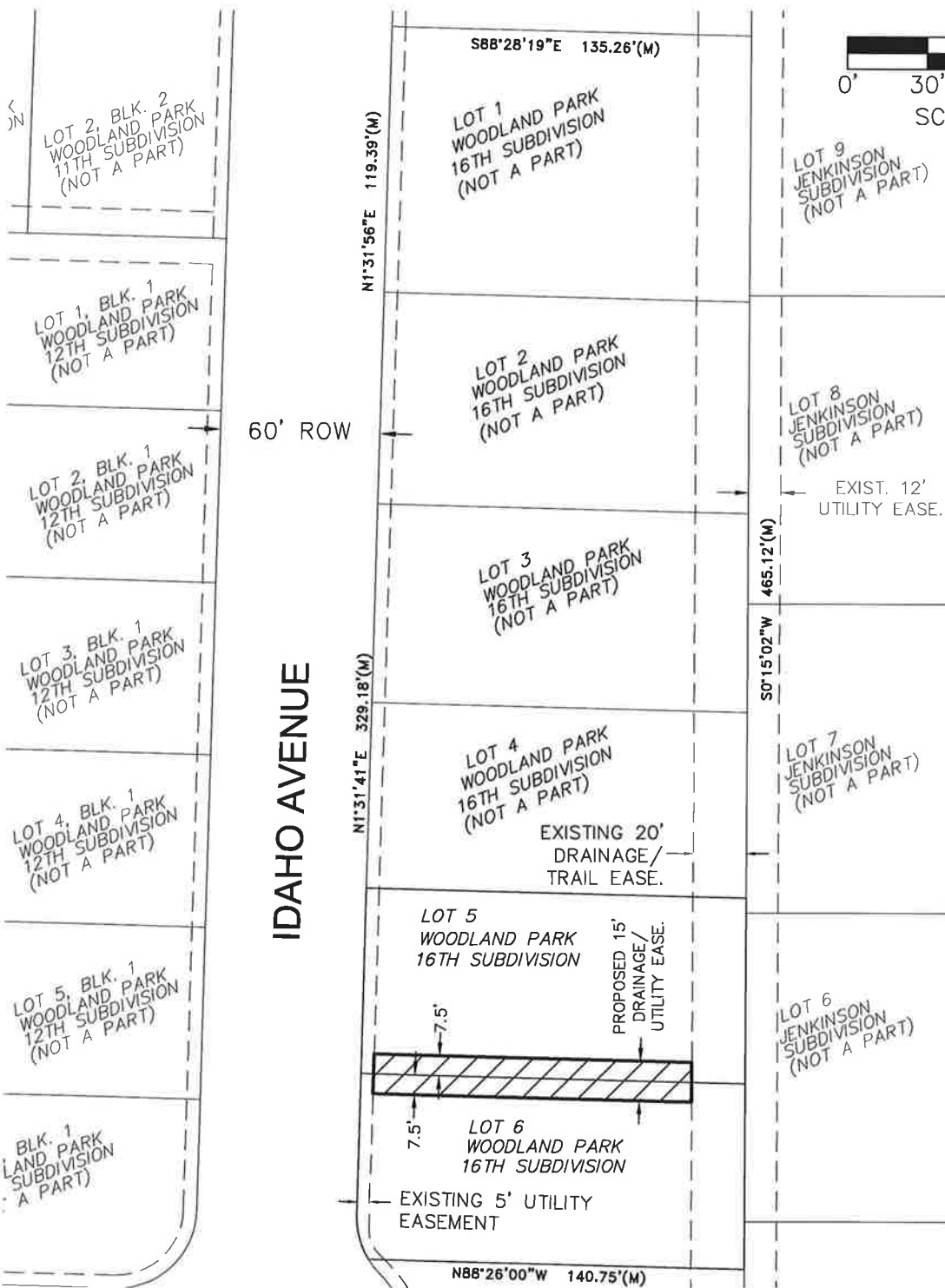
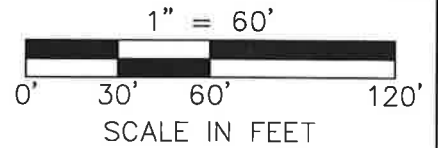
1. Move to approve
2. Refer the issue to a Committee
3. Postpone the issue to future date
4. Take no action on the issue

## **Recommendation**

City Administration recommends that the Council conduct a Public Hearing and approve the acquisition of the easement.

## **Sample Motion**

Move to approve the acquisition of the easement.



#### LEGEND

- PROPERTY LINE
- - - EASEMENT LINE
- PROPOSED EASEMENT AREA

#### A PROPOSED DRAINAGE/UTILITY EASEMENT IN LOT 5, WOODLAND PARK 16TH SUB.

A PROPOSED DRAINAGE/ UTILITY EASEMENT BEING THE SOUTH 7.5 FEET OF LOT 5, WOODLAND PARK SIXTEENTH SUBDIVISION; EXCLUDING THE WEST 5 FEET AND THE EAST 20 FEET OF SAID LOT 5.

#### A PROPOSED DRAINAGE/UTILITY EASEMENT IN LOT 6, WOODLAND PARK 16TH SUB.

A PROPOSED DRAINAGE/ UTILITY EASEMENT BEING THE NORTH 7.5 FEET OF LOT 6, WOODLAND PARK SIXTEENTH SUBDIVISION; EXCLUDING THE WEST 5 FEET AND THE EAST 20 FEET OF SAID LOT 5.

USER: jfmenez

DWG: F:\Projects\012-0865\SRVY 2017\Sheets\V\_EASE\_0120865.dwg  
 DATE: Mar 15, 2017 2:18pm  
 XREFS: 0120865\_XBASE 14th Sub

PROJECT NO: 2012-0865  
 DRAWN BY: JMJ  
 DATE: 03.15.2017

## PROPOSED EASEMENT

**MOLSSON**  
 ASSOCIATES

201 East 2nd Street  
 P.O. Box 1072  
 Grand Island, NE 68802-1072  
 TEL 308.384.8750  
 FAX 308.384.8752

EXHIBIT

1