



# City of Grand Island

Tuesday, April 11, 2017

Council Session

## Item G-10

**#2017-107 - Approving Acquisition of Utility Easement - 4480 Gold Core Drive - Inland Truck Parts Company**

*This item relates to the aforementioned Public Hearing item E-5.*

Staff Contact: Tim Luchsinger, Stacy Nonhof

RESOLUTION 2017-107

WHEREAS, a public utility easement is required by the City of Grand Island from Inland Truck Parts Company, to survey, construct, inspect, maintain, repair, replace, relocate, extend, remove, and operate thereon, public utilities and appurtenances, including lines and transformers; and;

WHEREAS, a public hearing was held on April 11, 2017 for the purpose of discussing the proposed acquisition of a twenty (20.0) foot utility easement located in the City of Grand Island, Hall County, Nebraska; and more particularly described as follows:

Commencing at the northeast corner of Lot Two (2), Platte Valley Industrial Park Tenth Subdivision, in the City of Grand Island, Hall County, Nebraska; thence southerly along the easterly line of said Lot Two (2), a distance of fifty (50.0) feet; thence deflecting right 90°00'00" and running westerly, a distance of two hundred eighty (280.0) feet to the point of termination.

The above described easement and right-of-way containing 0.13 acres, more or less, as shown on the plat dated 3/10/2017, marked Exhibit "A" attached hereto and incorporated herein by reference.

NOW, THEREFORE, BE IT RESOLVED BY THE MAYOR AND COUNCIL OF THE CITY OF GRAND ISLAND, NEBRASKA, that the City of Grand Island be, and hereby is, authorized to acquire a public utility easement from Inland Truck Parts Company, on the above-described tract of land.

- - -

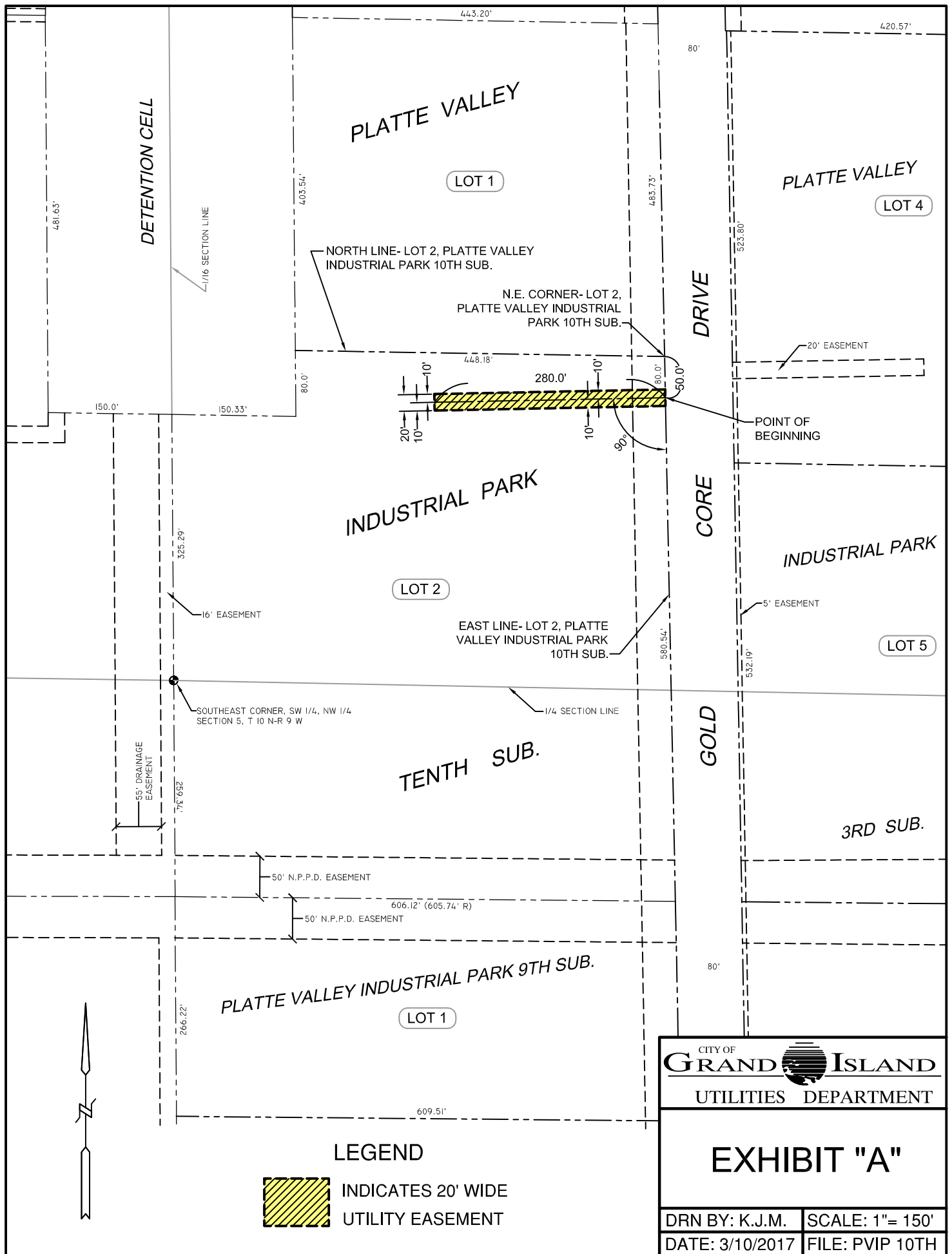
Adopted by the City Council of the City of Grand Island, Nebraska, April 11, 2017.

\_\_\_\_\_  
Jeremy L. Jensen, Mayor

Attest:

\_\_\_\_\_  
RaNae Edwards, City Clerk

Approved as to Form	☐ _____
April 7, 2017	☐ City Attorney



CITY OF  
**GRAND ISLAND**  
 UTILITIES DEPARTMENT

# EXHIBIT "A"

DRN BY: K.J.M.	SCALE: 1"= 150'
DATE: 3/10/2017	FILE: PVIP 10TH