
Library Board

Monday, August 15, 2016

Regular Meeting

Item C3

Approval of Director's Report

The Director's Report typically consists of:

- 1) a statistical usage report from the previous month including checkouts, visitors, program numbers and attendance, computer and database usage, and other statistics*
- 2) a monthly GI Library Journal newsletter*
- 3) and additional programming and administrative items*

Items not present in the agenda packet will be distributed at the meeting.

Staff Contact:

| MONTHLY REPORT | | | July 2016 | |
|---|--------------------|---------|-----------------------------------|----------------|
| * Edith Abbott Memorial Library * Mobile Outreach * Internet Branch www.gilibrary.org | | | | |
| Days Open to Public | 29 | 293 | <u>Library Programming:</u> | |
| Hours Open to Public | 281 | 2,851 | Children's Programs | 30 323 |
| | | | Participants | 1,599 13,444 |
| Checkouts - EAML | 28,074 | 235,003 | Adult Programs | 3 36 |
| Checkouts - Electronic | 2,838 | 24,336 | Participants | 37 888 |
| Checkouts - Outreach | 137 | 1,265 | Young Adult Programs | 16 65 |
| Total Checkouts | 31,049 | 260,604 | Participants | 330 1,358 |
| | | | Computer Classes | 0 6 |
| | | | Participants | 0 41 |
| Average Daily Checkouts | 1,071 | 889 | Outreach Programs | 0 27 |
| | | | Participants | 0 2,277 |
| | | | Tours Given | 0 6 |
| | | | Number in Tours | 0 406 |
| Reserves Placed | 1,181 | 10,708 | Total Programs | 49 463 |
| | | | Total Participants | 1,966 18,414 |
| Patrons Registered | 206 | 1,820 | <u>Computer Services:</u> | |
| Total Patrons | needs verification | 69,470 | Children's Computer User Sessions | 1575 13,745 |
| | | | Hours | 525 4,581 |
| | | | Reference/Lab User Sessions | 3063 36,382 |
| Items Deleted | 1,517 | 9,364 | Hours | 1021 12,127 |
| Total Items in Collection | | | Teen User Sessions | 258 2,461 |
| | | | Hours | 203 4,054 |
| Telephone Calls Received | 781 | 7,919 | Wireless User Sessions | 47 316 |
| | | | Hours | 1787 19,645 |
| Public Meeting Room Usage | 7 | 165 | Total User Sessions | 4,943 52,904 |
| | | | Total Hours | 3,536 40,407 |
| | | | <u>Selected Database Uses</u> | |
| Patrons Visiting Library | 23,784 | 193,734 | Ancestry | 9,377 82,880 |
| Outreach Patron Visits | 19 | 178 | Chilton | 0 66 |
| | | | Driver's Ed | 6 105 |
| | | | Ebsco Magazine Index Sessions | 0 51 |
| <u>Reference Services:</u> | | | FirstSearch | 385 4,145 |
| Reference Questions Answered | 1,074 | 11,466 | Grolier Online | 1,042 7,515 |
| Microfilm Use | 89 | 1,580 | Hoopla | 600 3,297 |
| Interlibrary Loans Received | 9 | 92 | Mango | 114 1,507 |
| Interlibrary Loans Sent | 54 | 820 | Novelist Plus | 15 250 |
| Total | 1,226 | 13,958 | One Click Digital Audiobooks | 17 125 |
| | | | Overdrive | 2,061 19,774 |
| <u>Friends Online Book Clubs</u> | | | Points of View Reference Center | 3 13 |
| Members | 0 | 1,004 | Price It Antiques | 10 22 |
| Accesses | 25412 | 224,440 | Reference USA | 10 162 |
| | | | Salem Health | 0 2 |
| | | | Student Research | 0 39 |
| | | | TumbleBooks for Teens | 8 35 |
| | | | TumbleBooks for Kids | 1 451 |
| | | | Tutor.com | 2 244 |
| | | | Wilson Web | 20 212 |
| | | | Zinio eMagazines | 160 1,718 |
| | | | | 39,243 244,029 |

GI Library Journal

AND THE WINNER OF THE CHILDREN'S SUMMER READING PROGRAM IS ...

SHOEMAKER ELEMENTARY

The statistics of the "On Your Mark, Get Set, Read!" Summer Reading Program at the Grand Island Public Library have been tallied and show that 3,259 children were registered in this summer program.

Winning first place and getting the Edgerton Explorit Center party is Shoemaker Elementary. Principal Lee Wolfe and his students at Shoemaker will proudly get to showcase the traveling summer reading trophy two years in a row; as Shoemaker was the 2015 winner too. Shoemaker had 49 percent of students who read 100 minutes or more throughout the summer months.

The second place winner was Engleman Elementary who had 39 percent of students reading 100 or more minutes this summer. Jane Gloor is the principal at Engleman.



Third place went to Gates Elementary for having 33 percent of students reading 100 minutes or more. Julie Martin serves as the principal of Gates.

Total minutes read by all participants was 1.8 million—that's an average of 575 minutes read this summer by each child, way to go! So

EVERYONE'S A BIG WINNER in our book!

More summer reading recap inside



WEEKLY STORY TIMES BEGINNING SEPT 6

MONDAY, 10 AM

Play & Read Lapsit

Tuesday, 10:30 AM

Rock & Read Baby Lapsit

Tuesday, 7 PM

Family(pajama) Storytime

Wednesday, 10 OR 11 AM

Ready to Read Story Time

Wednesday, 2:30 PM

[Bookbop for all ages](#)

Wednesday, 6 PM

Rock & Read Baby Lapsit

Saturday, 11 AM

Rotating series of four programs: Hot Cocoa en la Manana, Paws to Read, Stories and Crafts, I've Got Rhythm

**THE GRAND ISLAND
PUBLIC LIBRARY
IS THE GATEWAY
FOR THE PEOPLE OF
OUR DIVERSE
COMMUNITY TO
ACHIEVE A LIFETIME
OF LEARNING AND
LITERACY**

**211 N. Washington St
Grand Island, NE 68801**

308-385-5333

308-385-5339 (fax)

gipl@gilibrary.org

**New Expanded Year-
Round Hours**

Sunday 1 PM—5 PM

Monday—Thursday

9 AM—9 PM

Friday 9 AM—6 PM

Saturday 9 AM—5 PM

Library Website

www.gilibrary.org

Facebook Page

**[www.facebook.com/
gilibrary](http://www.facebook.com/gilibrary)**

Twitter Feed

**[www.twitter.com/
GIPLibrary](http://www.twitter.com/GIPLibrary)**

Online Catalog

**[grandisland.pioneer.
kohalibrary.com](http://grandisland.pioneer.kohalibrary.com)**

Foundation/Friends

**giplfoundation.org
and
[www.facebook.com/
giplfoundation](http://www.facebook.com/giplfoundation)**

2



MORE SUMMER READING RECAP

The Teen Summer Reading Program was a huge success with 240 registered and a reading total of 265,505 minutes— that's 1,106 minutes per participant or about 18-1/2 hours each.

The Adult Summer Reading Program was less structured but had many readers and plenty of attendance at special activities. As well as many prizes won.

Speaking of activities and prizes, with the help of the Grand Island Public Library Foundation and a very creative staff, we made summer reading even more fun for all ages. Reminder: if you haven't picked up your prize, so do soon.

Thanks to the many businesses and individuals who helped make the program a great summer success. Please call Celine or Kathleen at the library, (308) 385-5333, if you have questions or want additional information.



| <u>Program</u> | <u>Activities</u> | <u>Attendance</u> |
|-----------------------|--------------------------|--------------------------|
| Children's | 77 | 5,804 |
| Teens | 30 | 780 |
| Adults | 13 | 250 |

NUMBERS CRUNCH FOR JUST A FEW SERVICES

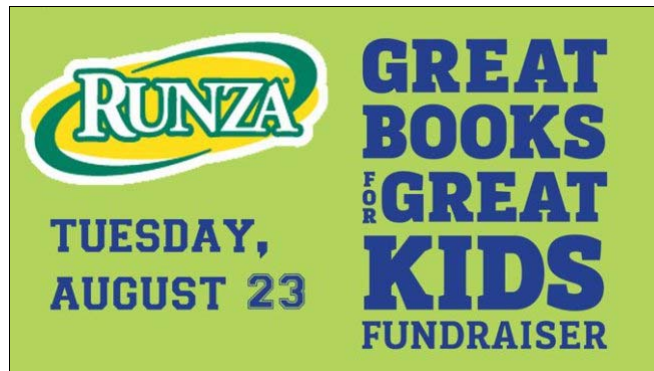
| (fiscal year starts in October) | July 2016 | Fiscal Year Total |
|---|-----------|-------------------|
| Checkouts | 31,049 | 260,604 |
| Visitors | 23,784 | 193,734 |
| Class/Program/Tour Attendance | 1,966 | 18,414 |
| Computer User Sessions (doesn't include wireless) | 4,943 | 52,904 |
| Online Resources Use | 39,243 | 244,029 |
| Reference questions / microfilm / Interlibrary Loan | 1,226 | 13,958 |
| Reserves (holds) Placed | 1,181 | 10,708 |
| Total of Selected Measures | 103,392 | 794,351 |

GREAT BOOKS FOR GREAT KIDS RUNZA LIBRARY FUNDRAISER COMING

On Tuesday, Aug. 23, Runza® Restaurants will conduct the 14th annual Great Books for Great Kids Fundraiser. Dine at either Runza in Grand Island at 1812 N. Webb Road or 2004 S. Locust St. on Aug. 23, and Runza will donate 10 percent of sales to the Friends of the Grand Island Public Library to purchase books for children and teens.

Runza® Restaurants has been a long time supporter of reading. "Reading is vital to lifelong success and provides an excellent

opportunity for families to spend time together," stated Becky Perrett, director of marketing for Runza® National. "Donating funds for books and promoting literacy is an important endeavor for children and the community."



"We are thrilled to partner again this year to support literacy and reading in Grand Island and Hall county," said Audrey DeFrank, of the Grand Island Public Library Foundation and Friends of the Library.

Runza® Restaurants – famous for the Runza® sandwich with its delicious blend of ground

beef, cabbage, onions, and secret spices baked inside homemade bread; made-to-order hamburgers; and homemade onion rings – operates and franchises restaurants in Nebraska, Colorado, Iowa, and Kansas.

For more information about the Grand Island library contact Audrey at 308-385-5333 ext. 112 or go to www.grand-island.com/library. The library can also be found on social media at www.facebook.com/gilibrary or www.twitter.com/GIPLibrary.com.

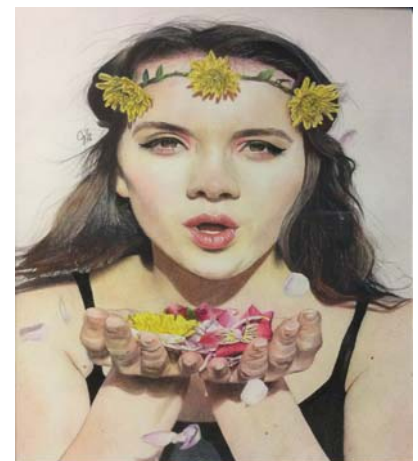
"GET IN THE GAME READ" ART CONTEST WINNERS

The Grand Island Public Library announces the winners from the 2016 Teen "Get in the Game Read" Art Contest which was sponsored by the Grand Island Public Library Foundation. The contest was for ages 11-18 and this year there were 34 entries.

The results of the contest are:

High School Division:

-First Place: Candra Greenwood from Grand Island Senior High for her colored pencil drawing, "Teen Spirit"



More teen winners on next page

3

MORE TEEN ART WINNERS!

-Second Place: Aviana Papazian from Northwest High School for her “Just Maybe” scratch board sketch

-Third Place: Anne Pham from Grand Island Central Catholic for her colored pencil drawing, “Girl with Glasses”

Middle School Division:

-First Place: Yahir Delgado from Westridge Middle School for the drawing entry “SSS Goku”

-Second Place: Caleb Hayes is home schooled created a sculpture “Justice League”

-Third Place: Ana Alvarado Mendoza from Westridge Middle School created a recycled paper art entry, “Polar Bear”



Photography Division:

-First Place: Claire Kelly from Barr Middle School for her photo “Kendall”

-Second Place: Alathia Hayes is home schooled and entered a “Knights” photograph

-Third Place: Olivia Mayhew is home schooled and entered a “Milky Way” photography

Textile Division:

-First Place: Elizabeth Huggins attends Trinity Lutheran and submitted a crochet entry, “Pink and White Spiral Flower Doily”

-Second Place: Olivia Mayhew created a sewing entry, “Wallet”

-Third Place: Emma Huggins attends Trinity Lutheran and entered an embroidery item, “Hummingbird at a Flower”



If you are reading this newsletter in print format, the online version at www.gilibrary.org has clickable links!

Contact library for future program schedule

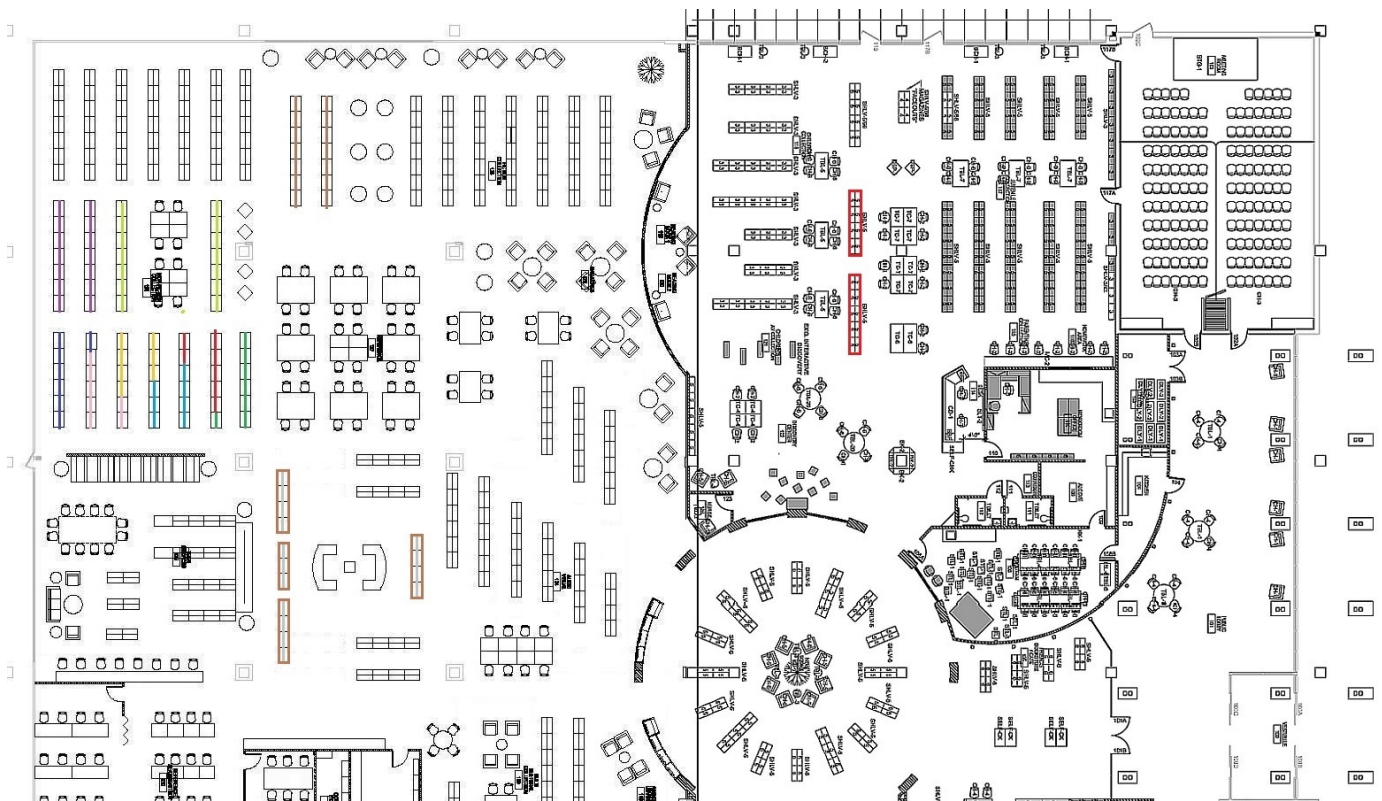
**Grand Island Public Library Board
C4 - Director's Report
Additional Information
August 15, 2016 Meeting**

1. Shelf Moving Last Week of August

From time to time internal space management requires the moving of shelves throughout the building as patrons' needs change. At this time we are making changes in the adult fiction and nonfiction sections as well as children's section audiovisual shelving.

The adult fiction and nonfiction changes will not result in smaller sections, just moved to allow for future growth in teen services including a possible makerspace (3-D printer and other high-tech creative tools). We have also found that the children's section audiovisual shelving is too high to allow effective staff monitoring of the Discovery Center, and so this higher shelving will be switched out with lower teen/reference shelving. Neither teen or children's shelving will be reduced in numbers, however.

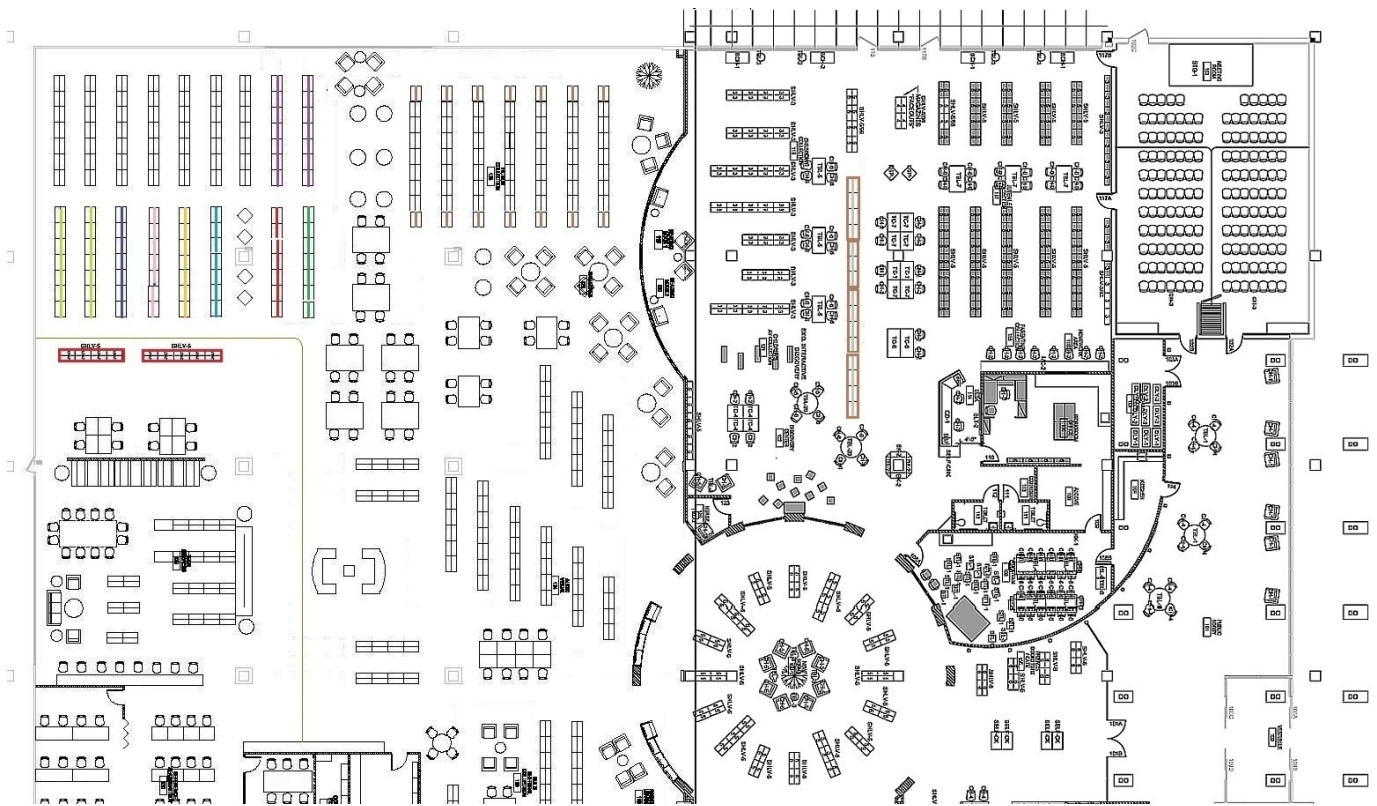
Prior to a move, I typically conduct space planning exercises with staff, map out current conditions (see below),



analyze alternatives, and then develop the final action plan with a map for all changes (next page). I determine how the project will be done, in this case obtaining quotes from library movers and choosing Jones Library Sales. This will be spent out of the library's general fund budget since there is available funding in our Office Furniture and Equipment Maintenance account.

Starting Monday, August 29, Jones will be at our library to conduct the move. They will bring specialized equipment to pick up and relocate heavy shelving ranges with books intact, will disassemble and reassemble shelving, and transfer books, as necessary. This firm is specialized in all eventualities to assure safety and minimize disruption to the public and staff. They are expert at assembling and disassembling shelving, and will be adding sway braces to the fiction shelving ranges that are being lengthened.

This graphic represents the future configuration of shelving and the opening made for future expansion of teen services and makerspace. This will lead to future decisions about the configuration of the teen and open space. For now our plans are to have teen nonfiction and study tables in the newly opened space.



Once this move is completed, we will also be reconfiguring the Discovery Center and picture books, and will create a new Easy Readers section with seating for children and parents. Staff has started discussing possible alternatives and I hope in September to map the needed changes.

2. Makerspace Grant Opportunity with UNL

UNL is applying for a National Science Foundation grant entitled Nebraska Innovation Network. If successful, our library will serve as a Nebraska Innovation Campus Satellite Community Makerspace along with three other public libraries throughout the state. It is an honor to be selected to participate in this grant and we have in front of us a wonderful Grow Grand Island opportunity!

The target audience for this project is middle school to high school age students, fostering awareness and understanding of STEM-related occupations and development of STEM knowledge and skills. However, the Makerspace will be available to and used by entrepreneurs and learners of all ages.

What will make this project successful in our community is not just the grant-funded equipment and supplies (see typical examples to the right), but a shared commitment between our library, the community and UNL.

If funded, the Nebraska Innovation Campus will actively support our community as an innovation connector. Research activities will be coordinated and conducted by University of Nebraska Extension staff. They will develop and document strategies to engage educators, communities, business and industry leaders and students in personally-relevant STEM based learning that leads to the development of knowledge and skills through technology rich experiences. Examples include curriculum development for equipment, professional development workshops, peer collaboration, family interactions, and one-to-one facilitations, local and regional maker events and an annual inventor's

Typical Components of a Public Library Makerspace

- Computers and software
- 3D scanner
- 3D printer
- Laser cutter
- CNC (computer numerical control) router
- Vinyl cutter
- Computer coding
- Circuit kits
- Robotics
- High-quality graphics/audio/video
- Sewing/Embroidery machine
- Various tools and supplies

competition.

Their staff will also train our staff on equipment use and patron services, and we will provide some assistance in research activities and programming much like we currently do with our Minecraft Coding classes.

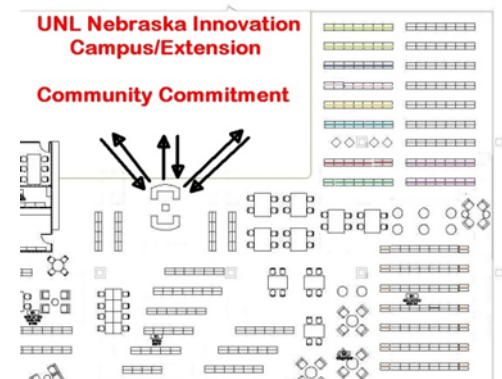
This grant also provides us with the University's expertise in building our community's leadership capacity to sustain this makerspace. For this portion of the project, critical to its success, I have asked several organizations to provide me with community leadership and development support. I would need their commitment to work with our public library and a local Extension educator to provide support and assistance to the extent they can help recruit local youth and local mentors/trainers, sustain the maintenance of the makerspace tools and spaces, ensure widespread promotion and community engagement, and be an integral part of evaluating and setting future directions for building a stronger community.

Why a makerspace at our public library?

Our public library along with many others across the nation make a natural fit for a community makerspace. Our mission intertwines a person's discovery and creativity with traditional and high-tech resources and tools, our community center atmosphere and access hours, and our lifetime-of-learning centered approach to services and programs with a distinct maker-culture twist. This mission also provides our community with extensive support for so many educational, cultural, multiculturally diverse, economic/community development, and quality of life initiatives and we are involved as community partners in these enterprises and with Grow Grand Island.

As this diverse community's center for a lifetime of learning and literacy, you can see learning happening throughout our library. Emergent literacy happens through playful learning and community partnerships in our Discovery Center. English language and citizenship literacy happens in our Multicultural Center and Literacy Niche. Family history literacy happens in our Roberta A. Lawrey Heritage Room. Learning through making – for kids, teens and adults - has been going on at our library for many years. Computer literacy and coding literacy happens in our Computer Lab. And the list goes on. And now we have the opportunity to expand 21st century literacies through this community makerspace with just the right STEM approach for students, entrepreneurs and the general public.

Development of a makerspace in our library is part of our GILIBRARY 2020 long range plan. If this grant is approved, we will be ready, willing and able to participate with you and UNL and hope to have the Community Makerspace in operation by mid-2017. The graphic to the right represents the connection this makerspace would have with teen services, computer services and general library staffing dependent on UNL and community commitments. Their attached letters are the beginning of the partnership I am developing to assure the success of this makerspace if the grant is awarded.



3. FY 2016-17 Budget Progress

The next City Council budget study session is Tuesday, August 16. I have attached the section containing the proposed budget for the library along with other departments. Also attached is the same section from the July budget study session. I am not aware of any reason the August budget is lower than the July budget, but I will find out prior to our meeting.

4. School Year Children's Programming Schedule – attached

5. Library Partnering in Warrior Writers Project – attached

6. Other Information – to be presented

August 3, 2016

Dr. Bradley Barker
University of Nebraska 4H Extension
Lincoln, NE 68583

Dear Dr. Barker,

It is an honor for our library to be selected to participate in your Nebraska Innovation Network grant application to the National Science Foundation.

If this grant proposal is funded, it is our intent to collaborate and commit our organization's resources to work with our community and local Extension educator to provide support and assistance such as:

- Providing dedicated space within the library
- Providing general oversight and facilitation to users of the Satellite Community Makerspace
- Assisting in community and student recruitment
- Recruiting community professionals to provide facilitation of student projects
- Providing access to computer networks for virtual collaboration
- Providing general troubleshooting for equipment
- Assisting in data collection efforts
- Collaborating and sharing with other Satellite Community Makerspaces and UNL

Our mission intertwines a person's discovery and creativity with traditional and high-tech resources and tools, our community center atmosphere and access hours, and our lifetime-of-learning centered approach to services and programs with a distinct maker-culture twist. This mission also provides our community's Grow Grand Island planning process with extensive support and collaboration. With everyone working together, there are so many educational, cultural, multi-culturally diverse, economic/community development, and quality of life initiatives building Grand Island's future growth.

Development of a makerspace in our library is part of our GILIBRARY 2020 long range plan and directly ties in with a major Grow Grand Island goal. Tonja Brown, Executive Chair of Grow Grand Island, expresses their organization's commitment toward this project as having the same level of community commitment as their other established initiatives. This, along with strong commitments from business, education and community service leaders reassures me that our entire community will be positioned to make this makerspace a resounding success with UNL's expert guidance.

As this diverse community's center for a lifetime of learning and literacy, you can see learning happening throughout our library. Emergent literacy happens through playful learning and community partnerships in our Discovery Center. English language and citizenship literacy happens in our Multicultural Center and Literacy Niche. Family history literacy happens in our Roberta A. Lawrey Heritage Room. Learning through making – for kids, teens and adults - has been going on at our library for many years. Computer literacy and coding literacy happens in our Computer Lab. And the list goes on. And now we have the opportunity to expand 21st century literacies through this community makerspace with just the right STEM approach for students, entrepreneurs and the general public.

Thank you for this wonderful opportunity to collaborate with UNL for the benefit of our community and state.

Sincerely,



Steve Fosselman, Library Director

A Lifetime of Learning Happens @ Your Library



*Working Together for a
Better Tomorrow. Today.*

August 3, 2016

Dr. Bradley Barker
University of Nebraska – Lincoln 4-H Extension
114 Ag Hall
Lincoln, NE 68583

Dear Dr. Barker,

As City Administrator, please consider this letter of commitment on behalf of myself and Mayor Jeremy L. Jensen of the City of Grand Island. Having the chance to offer families and individuals this unique, high-quality, community makerspace is an opportunity that we would greatly welcome.

If the University of Nebraska-Lincoln's proposal entitled Nebraska Innovation Network is selected for funding by the National Science Foundation, it is our intent to collaborate and commit our resources to work with our public library and local extension educators to provide support and assistance in the following ways:

- Sustain our library operations and services; the development of a makerspace is part of our GILIBRARY 2020 Long Range Plan;
- Support this effort and other library initiatives that will support the Grow Grand Island initiatives; and
- Engage local students, businesses, non-profit organization and other community partners to ensure the makerspace is a success.

The Mayor and I appreciate this opportunity to expand 21st century literacy through a community makerspace for our students, local entrepreneurs and the general public.

Sincerely,

A handwritten signature in blue ink that reads "Marlan Ferguson". The signature is fluid and cursive.

Marlan Ferguson, City Administrator

July 27, 2016

Dr. Bradley Barker
UNL 4-H Extension
114 Ag Hall
PO Box 830700
Lincoln, NE 68583-0700



Dear Dr. Barker,

Grand Island, Nebraska is committed to growth. As such, in 2014 the business community, in concert with city and county government, undertook a strategic planning process. This resident-driven, inclusive effort resulted in the development of a collaborative and comprehensive approach to business and community growth and progress. The "Grow Grand Island: A Grand Vision for the Heartland" program of work includes 30+ initiatives across these five foundational pillars: 1) Existing Business, 2) Entrepreneurs, 3) Image, 4) Workforce, and 5) Community Assets. These five pillars are tied together by collaborative, cooperative, and effective partnerships.

I was elated to hear the Grand Island Public Library was invited to be part of a National Science Foundation grant application coordinated by the Nebraska Innovation Campus at UNL. Having a makerspace available to our area will hit every pillar in one way or another. I envision this grant opportunity to be defined as a Grow Grand Island initiative and given the same level of community commitment our other established initiatives are given.

Dedicated leaders and tireless volunteers work hard to address our program of work. We strive to leverage resources and partner in every way possible to achieve our objectives.

Please count Grow Grand Island in enthusiastic support of the Grand Island Public Library's participation in this grant. We look forward to the many ways our youth and all those with entrepreneurial spirit will create and explore. This is the kind of technology-rich experiences that will develop the knowledge and skills Grand Island and the surrounding area will need to compete and flourish in tomorrow's workplace.

Sincerely,

A handwritten signature in cursive script that reads "Tonja Brown".

Tonja Brown
Executive Chair

Kneale Administration Building

Dr. Robin Dexter
Associate Superintendent
August 2, 2016



To: Dr. Bradley Barker
UNL 4-H Extension

RE: Letter of Commitment for the University of Nebraska-Lincoln's proposal, Nebraska Innovation Network

Dr. Barker,

I am writing to confirm our intent to collaborate and commit Grand Island Public Schools to work with the City of Grand Island Public Library and local extension educator to:

- Promote the Makerspace to entrepreneurs that can work alongside students to create and invent.
- Promote the space and the learning activities.

Grand Island Public Schools (GIPS) serves 4,500 middle and high school students. This population is increasingly diverse with over 52% of our student population being of Hispanic descent. Additionally, over 69% of our students are eligible for free and reduced priced meals. While GIPS' graduation rate is around 90%, only 65% of students are continuing on to college and fewer into a successful career. For this reason, it is important for GIPS to encourage students to overcome barriers and to further their education.

GIPS is looking forward to the collaboration with the City of Grand Island Public Library and the University of Nebraska-Lincoln's proposal entitled Nebraska Innovation Network if funded by the National Science Foundation. This project speaks directly to our student base and has the potential to change student lives.

GIPS is pursuing strategies to engage educators, communities, business and industry leaders, and students in personally-relevant STEM based learning that leads to the development of knowledge and skills through technology rich experiences. Due to the positive affect and support for students by this project, GIPS is committed to support the collaboration to implement the Nebraska Innovation Network – Satellite Community Makerspace.

Sincerely,

A handwritten signature in cursive script that reads "Robin R. Dexter".

Robin R. Dexter, EdD

123 South Webb Road • Grand Island, NE 68802-4904
308 385-5900 • Fax 308 385-5949 • rdexter@gips.org • www.gips.org

Every Student, Every Day, a Success



August 3, 2016

Toll-free, all locations:
1-877-222-0780
www.cccneb.edu

Administrative Office

3134 W Highway 34
PO Box 4903
Grand Island, NE 68802-4903
Phone: (308) 398-4222
Fax: (308) 398-7399

Columbus

4500 63rd Street
PO Box 1027
Columbus, NE 68602-1027
Phone: (402) 564-7132
Fax: (402) 562-1201

Grand Island

3134 W Highway 34
PO Box 4903
Grand Island, NE 68802-4903
Phone: (308) 398-4222
Fax: (308) 398-7398

Hastings

550 S Technical Blvd
PO Box 1024
Hastings, NE 68902-1024
Phone: (402) 463-9811
Fax: (402) 461-2454

Holdrege

1308 2nd Street
PO Box 856
Holdrege, NE 68949-0856
Phone: (308) 995-8133
Fax: (308) 995-5695

Kearney

3519 2nd Avenue
Kearney, NE 68847-2911
Phone: (308) 338-4000
Fax: (308) 338-4022

Lexington

1501 Plum Creek Parkway
PO Box 827
Lexington, NE 68850-0827
(308) 324-8480
Fax: (308) 324-8498

Dear Sir/Madam:

The letter serves as Central Community College's (CCC) commitment to work with the Grand Island Public Library in creating a *Nebraska Innovation Campus Satellite Community Makerspace*. This effort is of particular interest to CCC in our efforts to promote student awareness of STEM careers and to pursue innovative strategies to engage students. It would also assist in achieving a larger goal of encouraging students to seek education in these careers.

CCC currently is engaged in a joint effort with Grand Island Public Schools in an established Career Pathways Institute and this project would both expand and enhance our efforts at engaging students as early as possible to generate interest in these career possibilities. With the rapidly changing diversity in Grand Island, these efforts will become increasingly important to the future of our community.

If the University of Nebraska-Lincoln's proposal entitled Nebraska Innovation Network is selected for funding by the National Science Foundation, it is our intent to collaborate and commit our organization's resources to work with our local public library and local Extension educator to provide support and assistance through faculty participation, providing special interest sessions, and consulting with design of space and technology. We hope that Grand Island is provided the most serious consideration.

Best regards,

Thomas A Walker Jr

Campus President

Central Community College – Grand Island

309 West Second Street
Post Office Box 1486
Grand Island, NE 68802-1486

Phone 308.382.9210
Fax 308.382.1154
GIChamber.com



August 3, 2016

Dr. Bradley Barker
UNL 4-H Extension
Post Office Box 830700
Lincoln, NE 68583-0700

RE: NEBRASKA INNOVATION NETWORK

Dear Dr. Barker:

I am writing this letter in reference to the Nebraska Innovation Network and the potential for the Grand Island Public Library and local Extension educator to be a part of this outstanding initiative.

For years, the Grand Island Public Library has been a place where discovery and learning intersect. The library's focus on community and education with no restrictions regarding economic or socioeconomic status or ethnicity have made the Public Library one of the most forward focused community development sites in Grand Island.

The community of Grand Island has adopted a strategic business and community development plan entitled Grow Grand Island. This plan, designed to help Grand Island be strategic and thoughtful in its economic and community development efforts, includes numerous references to the importance of makerspace programs, high school entrepreneurialism and general efforts at increasing our success in growing our entrepreneurial businesses. The target audience (middle and high school students) and goals for the National Science Foundation grant aligns perfectly with the goals within the Grow Grand Island initiative - fostering awareness and understanding of STEM-related occupations and development of STEM knowledge and skills. These efforts would complement quite nicely the work being done at our Career Pathways Institute as well.

The Grand Island Chamber of Commerce is excited about the opportunity for our Public Library to serve as a makerspace site. We will commit to providing ongoing communications with the business community which would allow for promotion of the makerspace initiative. Additionally, these communications could serve as a way for the Library to seek out volunteers and mentors. We are pleased to be a partner with the Library in this endeavor.

If you have any questions, please do not hesitate to contact me.

Sincerely,


Cindy K. Johnson
President



empowering individuals, embracing cultures, strengthening community

221 W. 2nd Street, Grand Island, NE 68801

Dr. Bradley Barker
UNL 4-H Extension
114 Ag Hall
PO Box 830700
Lincoln, NE 68583-0700

August 3, 2016

Dear Dr. Barker:

Since its formation in 2001, Multicultural Coalition has proudly collaborated with the Grand Island Public Library. Our clientele is low-income and since the beginning of this year, 50% of our clients have been Latino or Hispanic and 30% have been African (a tenfold increase from 2015). The diversity of our clients is indicative of the diversity of library patrons. Many of the individuals we serve also utilize the many services our public library has to offer.

Grand Island is a diverse community, with the last U.S. Census estimating our minority population at 33% of the total population. Multicultural Coalition supports this diversity through language and cultural interpretation so that new residents, whether they be immigrants, refugees or other vulnerable populations, can access the services they need to be successful Grand Islanders. Language and cultural interpretation are also important for long-established Grand Island residents, especially to learn about the diverse populations in the community, so we can all learn, work and play together.

If the Nebraska Innovation Network proposal brought forth by the University of Nebraska-Lincoln is selected by the National Science Foundation, we intend to continue our collaboration with and support of our public library. One component of Multicultural Coalition's mission is empowering individuals, and we believe that this happens through education. In our work with low-income and diverse populations, we hope to promote the space and the learning activities associated with the Nebraska Innovation Network.

In hopes that the University of Nebraska-Lincoln decides to make the Grand Island Public Library the locus of the Nebraska Innovation Network, we reaffirm our promise of collaboration.

Sincerely,

A handwritten signature in black ink that reads "Audrey A. Lutz".

Audrey A. Lutz
Executive Director
director@mcofigi.org



Our Vision: A safe, healthy, & thriving community and families.

August 2, 2016

Dr. Bradley Barker
UNL 4-H Extension

RE: Nebraska Innovation Network

Dr. Barker,

If the University of Nebraska-Lincoln's proposal entitled "Nebraska Innovation Network" is selected for funding by the National Science Foundation, it is the intent of the Hall County Community Collaborative (H3C) to collaborate and commit our organization's resources to work with our local public library and Extension educator to provide support and assistance.

The H3C will provide assist with recruiting volunteers to staff the Makerspace, promote the Makerspace to entrepreneurs that can work alongside students to create and invent, recommend one or more H3C member to participate in statewide and/or local training, and promote the space and the learning activities. The H3C has a membership of just over 160 individuals representing a large number of community sectors including business, human service, government, primary and secondary education, medical, faith-based, early childhood, older youth, community volunteers, and other systems of care. The H3C is committed to strengthening systems of care that serve children from birth to 24 and their families, ensuring access to services that are culturally, socially, and language appropriate.

The Grand Island Public Library is a vital partner of the H3C and provides a community space and services that meet needs across generations and diverse cultures. The H3C is committed to the Nebraska Innovation Network project and fully supports the University of Nebraska-Lincoln proposal.

Regards,

A handwritten signature in black ink that reads 'Kathleen M. Stolz'.

Kathleen Stolz, President
Hall County Community Collaborative

Hall County Community Collaborative - 1137 S. Locust St. -- Grand Island, NE -- 68801 -- www.h3cne.org

August 2, 2016

Dr. Bradley Barker
UNL 4-H Extension, 114 Ag Hall
Lincoln, NE 68583

Dear Dr. Barker,

The intent of this letter is to support the National Science Foundation's grant application coordinated by the Nebraska Innovation Campus at UNL. The goals of the grant application align with the mission of the Heartland United Way which is to improve lives and create possibilities in Hall, Hamilton, Howard and Merrick Counties. At the Heartland United Way, we fight for the health, education and financial stability for every person in every community. We are proud to partner with Grand Island Public Library on two of our early childhood education initiatives to improve early grade reading levels which include BornLearning and the Dolly Parton Imagination Library. The Imagination Library promotes early childhood literacy by providing free age-appropriate books that are delivered to the mailboxes of children under five who live in Hall, Hamilton, Howard and Merrick Counties.


The Grand Island Public Library is a vital community partner on our Education Council which focuses on student success and broadened job opportunities. Community partners serving on the Education Council are committed to seeking innovative ways to reduce student drop-out rates and to provide opportunities to learn new skills to secure higher-paying jobs.

The prospect of a community makerspace at our public library will go far to achieve community goals we have set to give children a chance and families a brighter future. Overcoming barriers and attaining lifelong personal and community success start with staying in school and gaining aptitude with 21st century technologies. Our library has made a good start with providing access to computers and other technology basics, often unavailable to people served by the United Way. This makerspace is a significant next step in our library's and community's development.

If the University of Nebraska-Lincoln's proposal entitled Nebraska Innovation Network is selected for funding by the National Science Foundation, it is our intent to collaborate and commit our organization's resources to work with our local public library and local Extension educator to provide support and assistance in securing mentors and volunteers to work with students and the public. We will actively promote the makerspace's benefits, availability and ease of use to those we serve directly and indirectly within our four-county service area. And since the Heartland United Way is an integral part of Grow Grand Island, we will all be leveraging our leadership and development resources for the benefit of this grant opportunity.

The Heartland United Way is proud to support a community makerspace at our public library.

Thank you for your consideration.


Karen Rathke
President

GIVE. ADVOCATE. VOLUNTEER.

General Fund Appropriation Summary

| | 2014 Actual | 2015 Actual | 2016 Budget | 2016 Forecast | 2017 Budget |
|---|-------------------|-------------------|-------------------|-------------------|-------------------|
| General Government | | | | | |
| City Administrator's Office | 356,121 | 470,673 | 422,053 | 419,095 | 424,035 |
| Economic Development | 375,001 | 466,070 | 525,000 | 525,000 | 100,000 |
| Mayor's Office | 16,371 | 18,713 | 24,865 | 25,583 | 23,365 |
| Legislative | 86,182 | 90,823 | 93,471 | 93,805 | 93,471 |
| City Clerk | 122,011 | 134,279 | 144,769 | 141,404 | 146,656 |
| Finance | 2,106,300 | 2,098,170 | 2,152,104 | 1,982,563 | 2,220,197 |
| Legal | 317,303 | 328,411 | 366,156 | 374,853 | 391,786 |
| City Hall | 341,820 | 367,498 | 500,383 | 471,891 | 495,452 |
| Human Resources | 501,863 | 437,973 | 584,205 | 567,840 | 555,641 |
| | 4,222,972 | 4,412,609 | 4,813,006 | 4,602,035 | 4,450,603 |
| Public Safety | | | | | |
| Building Inspection | 865,464 | 875,497 | 943,051 | 887,900 | 961,186 |
| Fire Services | 4,080,223 | 4,217,032 | 8,858,561 | 7,678,637 | 10,037,176 |
| Emergency Medical Services | 3,068,772 | 3,114,430 | - | - | - |
| Police | 10,275,570 | 10,492,938 | 11,401,155 | 11,185,462 | 11,614,517 |
| Emergency Management | 1,146,386 | 1,295,656 | 1,459,839 | 1,385,572 | 1,529,668 |
| | 19,436,415 | 19,995,553 | 22,662,606 | 21,137,571 | 24,142,547 |
| Public Works | | | | | |
| Engineering | 1,036,639 | 1,116,026 | 1,441,795 | 1,420,726 | 1,469,591 |
| Streets & Transportation | 5,350,415 | 4,845,354 | 7,214,017 | 7,233,725 | - |
| | 6,387,054 | 5,961,380 | 8,655,812 | 8,654,451 | 1,469,591 |
| Environment & Leisure | | | | | |
| Planning | 265,578 | 278,975 | 304,862 | 303,422 | 317,018 |
| Library | 1,777,408 | 1,751,799 | 1,963,214 | 1,901,334 | 1,829,339 |
| Parks | 1,629,560 | 1,552,809 | 1,852,419 | 1,777,517 | 1,866,813 |
| Cemetery | 472,894 | 543,525 | 547,856 | 547,735 | 546,910 |
| Recreation | 395,348 | 449,876 | 459,096 | 438,657 | 457,625 |
| Aquatics | 556,694 | 564,764 | 598,939 | 597,644 | 569,570 |
| Public Information | 173,475 | 188,721 | 234,466 | 214,867 | 222,648 |
| Heartland Shooting Park | 486,510 | 526,193 | 510,769 | 505,635 | 527,419 |
| | 5,757,468 | 5,856,663 | 6,471,621 | 6,286,812 | 6,337,342 |
| Non-Department | | | | | |
| Non-Department | 2,344,586 | 2,353,791 | 3,175,891 | 3,915,481 | 1,587,642 |
| Total General Fund Appropriation | 38,148,495 | 38,579,996 | 45,778,936 | 44,596,349 | 37,987,725 |

General Fund Appropriation Summary

| | 2014 Actual | 2015 Actual | 2016 Budget | 2016 Forecast | 2017 Budget |
|---|-------------------|-------------------|-------------------|-------------------|-------------------|
| General Government | | | | | |
| City Administrator's Office | 356,121 | 470,673 | 422,053 | 419,095 | 424,930 |
| Economic Development | 375,001 | 466,070 | 525,000 | 525,000 | 100,000 |
| Mayor's Office | 16,371 | 18,713 | 24,865 | 25,583 | 23,365 |
| Legislative | 86,182 | 90,823 | 93,471 | 93,805 | 93,471 |
| City Clerk | 122,011 | 134,279 | 144,769 | 141,404 | 146,551 |
| Finance | 2,106,300 | 2,098,170 | 2,152,104 | 1,982,563 | 2,243,773 |
| Legal | 317,303 | 328,411 | 366,156 | 374,853 | 395,709 |
| City Hall | 341,820 | 367,498 | 500,383 | 471,891 | 547,168 |
| Human Resources | 501,863 | 437,973 | 584,205 | 567,840 | 559,225 |
| | 4,222,972 | 4,412,609 | 4,813,006 | 4,602,035 | 4,534,192 |
| Public Safety | | | | | |
| Building Inspection | 865,464 | 875,497 | 943,051 | 887,900 | 960,784 |
| Fire Services | 4,080,223 | 4,217,032 | 8,858,561 | 7,678,637 | 10,000,321 |
| Emergency Medical Services | 3,068,772 | 3,114,430 | - | - | - |
| Police | 10,275,570 | 10,492,938 | 11,401,155 | 11,185,462 | 11,585,104 |
| Emergency Management | 1,146,386 | 1,295,656 | 1,459,839 | 1,405,039 | 1,535,247 |
| | 19,436,415 | 19,995,553 | 22,662,606 | 21,157,038 | 24,081,456 |
| Public Works | | | | | |
| Engineering | 1,036,639 | 1,116,026 | 1,441,795 | 1,420,726 | 1,366,450 |
| Streets & Transportation | 5,350,415 | 4,845,354 | 7,214,017 | 7,233,725 | - |
| | 6,387,054 | 5,961,380 | 8,655,812 | 8,654,451 | 1,366,450 |
| Environment & Leisure | | | | | |
| Planning | 265,578 | 278,975 | 304,862 | 303,422 | 320,526 |
| Library | 1,777,408 | 1,751,799 | 1,963,214 | 1,901,334 | 2,046,548 |
| Parks | 1,629,560 | 1,552,809 | 1,852,419 | 1,777,517 | 1,966,797 |
| Cemetery | 472,894 | 543,525 | 547,856 | 547,735 | 555,469 |
| Recreation | 395,348 | 449,876 | 459,096 | 438,657 | 479,955 |
| Aquatics | 556,694 | 564,764 | 598,939 | 597,644 | 601,324 |
| Public Information | 173,475 | 188,721 | 234,466 | 214,867 | 223,332 |
| Heartland Shooting Park | 486,510 | 526,193 | 510,769 | 505,635 | 543,588 |
| | 5,757,468 | 5,856,663 | 6,471,621 | 6,286,812 | 6,737,539 |
| Non-Department | | | | | |
| Non-Department | 2,344,586 | 2,353,791 | 3,175,891 | 3,915,481 | 1,587,642 |
| Total General Fund Appropriation | 38,148,495 | 38,579,996 | 45,778,936 | 44,615,815 | 38,307,279 |



Grand Island Public Library's 2016-2017 Children's Programming School Year Schedule



Beginning September 6th

MONDAY

**Lapsits (Play and Read) @
10:00 AM-10:45 AM**
Ages 1-2 An interactive play time for preschool children who learn primarily through their senses. This incorporates play, books, fingerplays, crafts, and more.



TUESDAY

**Baby Lapsits (Rock and Read) @
10:30 AM-11:00 AM**
Ages birth up to 2 Music, books, fingerplays, puppets, and more!

Pajama Time (Family Story Hour) @ 7:00 PM-8:00 PM
Preschool Ages & Families Come play with educational toys, listen to stories, crafts and other hands-on pre-literacy fun.

WEDNESDAY

**Storytime (Ready to Read) @
10:00 AM and 11:00 AM**
Ages 3-5 Stories, crafts, treats, music, and more!

Two Times!

**BookBop @
2:30 PM- 3:15 PM**
All ages A music and movement storytime in Meeting Room ABC



**Baby Lapsit (Rock and Read) @
6:00 PM- 6:30 PM**

Ages birth up to 2 Music, books, fingerplays, puppets, and more!

Programming ends May 6, 2017

SATURDAY STORYTIME PROGRAMS

11:00 AM-11:45 AM in Buckingham Palace

1st Saturday of the Month: Paws to Read

2nd Saturday of the Month: Clean Community System

3rd Saturday of the Month: Hot Cocoa en la Manana Storytime (Multicultural Coalition)

4th Saturday of the Month: BookBop

5th Saturday of the Month (if needed) : Stories and Crafts

2016-2017 Closing Dates

| | |
|--------------------------|--------------------------|
| September 4 & 5, 2016 | December 25, 2016 |
| November 11, 2016 | December 31, 2016 |
| November 24, 2016 | (TBA...) |
| November 25, 2016 | January 1, 2017 |
| December 24, 2016 | January 16, 2017 |
| (TBA...) | April 16, 2017 |

Special Programming

No Storytimes or Lapsits during these weeks:

Winter Break Programming

December 22, 23, 26, 27, 28, 29.

Regular Storytime/Lapsits resume January 3

Bear Fair

January 23-25th.

Regular Storytime/Lapsits resume February 1

Spring Break Programming

March 3-11.

Regular Storytime/Lapsits resume March 13

www.gilibrary.org

211 N Washington St
308.385.5333



Nebraska Warrior Writers



Fall 2016 Workshops

Professional Instruction • Support • Guidance

Free to all veterans & active duty personnel

9 - 11 a.m. • Saturdays

Grand Island Public Library

211 N Washington Street

September 10

October 22

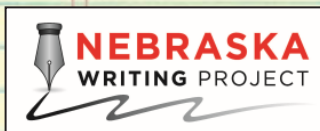
September 17

November 5

October 8

November 19

PRESENTED BY:



HUMANITIES NEBRASKA



To sign up, contact Erin DeHart at edehart@york.edu or (402) 366-7182.

Upon request, activities will be available for children ages 3-12.

www.NeWarriorWriters.org

Fred and Amanda
Glade
Foundation



Library Programs and Activities
August 15, 2016 Report to Board

| Title | Date | Primary Event Type |
|---|-----------|---------------------------|
| The Library is Closed in Observance of the Fourth of July | 7/3/2016 | Announcement |
| The Library is Closed in Observance of the Fourth of July | 7/4/2016 | Announcement |
| Baby Lapsits-Rock and Read | 7/5/2016 | Baby & Toddler Lapsits |
| Book Club for Adults 2016 | 7/5/2016 | Book Club for Adults |
| Stories and Crafts-Tongue and Taste with UNL Extension | 7/5/2016 | Children's Summer Reading |
| Teen Anime-Open Craft Day | 7/5/2016 | Teen Anime/Craft |
| Golden Sower FUN Club-Ninja Red Ridinghood with South Central Taekwondo | 7/6/2016 | Children's Summer Reading |
| Preschoolers-Kindergarten Storytime-SOCCER | 7/6/2016 | Children's Summer Reading |
| Proctor Exam for University of Cincinnati | 7/6/2016 | Proctor Exam |
| Teen Crafts-Newspaper Basket | 7/6/2016 | Teen Summer Reading |
| Summer Reading Enrichment Club-Let's Get Physical | 7/7/2016 | Children's Summer Reading |
| Teen Summer Reading Program-GI Robots with Sam | 7/7/2016 | Teen Summer Reading |
| Children Stories, Animal Stories and Traditional Lakota Stories | 7/9/2016 | NE 150 Workshop |
| Willa Cather's Life in Letters | 7/9/2016 | NE 150 Workshop |
| Stories and Crafts-Saturday Storytime | 7/9/2016 | Storytime |
| 3rd-5th Grade Big Kids Club-Think Your Drink and Blender Bikes with UNL Ext Off | 7/11/2016 | Children's Literacy Event |
| Mega Mondays! Magical Paradise Exotic Animals | 7/11/2016 | Children's Summer Reading |
| Minecraft-Coding Club | 7/11/2016 | Teen General Program |
| Storytime for Adults-Reading with-Dori Bush | 7/11/2016 | Adult Summer Reading |
| Baby Lapsits-Rock and Read | 7/12/2016 | Baby & Toddler Lapsits |
| Stories and Crafts-Healthy Plate | 7/12/2016 | Children's Summer Reading |
| Teen Anime-Get in the Game | 7/12/2016 | Teen Anime/Craft |
| Golden Sower FUN Club-A Piece of Cake | 7/13/2016 | Children's Summer Reading |
| Preschoolers-Kindergarten Storytime-RALLY CAR RACING | 7/13/2016 | Children's Literacy Event |
| Proctor Test-Iowa Central Community College | 7/13/2016 | Proctor Exam |
| Teen Crafts-Notebook Collage | 7/13/2016 | Teen Summer Reading |
| AARP and Nebraska Dept of Insurance | 7/13/2016 | Hosted Meeting |
| Proctored Exam | 7/14/2016 | Proctor Exam |
| Summer Reading Enrichment Club-Stuhr Museum | 7/14/2016 | Children's Summer Reading |
| Teen Summer Reading Program-Teen CERT Introduction | 7/14/2016 | Teen Summer Reading |
| Proctor Exam | 7/16/2016 | Proctor Exam |
| Stories and Crafts-Saturday Storytime | 7/16/2016 | Storytime |
| 3rd-5th Grade Big Kids Club-Library Miniature Golf | 7/18/2016 | Children's Literacy Event |
| Library Board Meeting | 7/18/2016 | Library Board |
| Mega Mondays! Just for Kix | 7/18/2016 | Children's Literacy Event |
| Minecraft-Coding Club | 7/18/2016 | Teen General Program |
| Proctored Test -unk | 7/18/2016 | Proctor Exam |
| Baby Lapsits-Rock and Read | 7/19/2016 | Baby & Toddler Lapsits |
| Stories and Crafts-Summer Olympics | 7/19/2016 | Children's Summer Reading |
| Teen Anime-Yoga with Deb | 7/19/2016 | Teen Anime/Craft |
| Golden Sower FUN Club-Elizabeth: Queen of the Seas | 7/20/2016 | Children's Summer Reading |
| Preschoolers-Kindergarten OLYMPICS | 7/20/2016 | Children's Summer Reading |
| Teen Crafts-Magazine Crafts | 7/20/2016 | Teen Summer Reading |
| Summer Reading Enrichment Club-Olympic Reading Party! | 7/21/2016 | Children's Summer Reading |
| Teen Summer Reading Program-Talent Show | 7/21/2016 | Teen Summer Reading |
| Hall County Community Collaborative | 7/22/2016 | Hosted Meeting |

Call for more details

Library Programs and Activities

August 15, 2016 Report to Board

| | | |
|---|-----------|---------------------------|
| Proctor Exam for University of Cincinnati | 7/22/2016 | Proctor Exam |
| Stories and Crafts-Saturday Storytime | 7/23/2016 | Storytime |
| 3rd-5th Grade Big Kids Club-Lego Man | 7/25/2016 | Children's Summer Reading |
| Mega Mondays! Lego Man is Here! | 7/25/2016 | Children's Summer Reading |
| Teen Program-Lego Man | 7/25/2016 | Teen Summer Reading |
| Central District Health Department | 7/25/2016 | Hosted Meeting |
| Movie mania for kids and teens | 7/26/2016 | Children's Summer Reading |
| Movie mania for kids and teens | 7/27/2016 | Children's Summer Reading |
| Movie mania for kids and teens | 7/28/2016 | Children's Summer Reading |
| Movie mania for kids and teens | 7/29/2016 | Children's Summer Reading |
| Stories and Crafts-Saturday Storytime | 7/30/2016 | Storytime |
| All reading minutes are due by July 31st by Midnight | 7/31/2016 | Children's Summer Reading |
| 12th Annual Teen Art Contest in Art Alcove | July | Teen Summer Reading |
| Adult Displays for July - Cats, 150 Nebraska Books, 4th of July, Dog Days of Summer | July | Display - Adult |
| Children's Displays for July - City Schools Contest, On Your Mark, Get Set, Read Glass Display, Summer Books, Ice Cream , Exercise, Minecraft, History, Olympics, New Fiction, Health Books, 4th of July, Legos, Animals, and Fossils | July | Display - Children's |
| Teen Displays for July - Yalsa Top Ten, Guys Read, New Books, Get in the Game Sports Books, Award Books, Stress Coloring Table, Graphic Novels, Gaming Books, Pokemon | July | Display - Teen |
| Book Club for Adults 2016 | 8/2/2016 | Book Club for Adults |
| Author /Book Signing-Barn Quilts | 8/3/2016 | Adult Author Program |
| Proctored Test | 8/4/2016 | Proctor Exam |
| Proctor Exam for University of Cincinnati | 8/4/2016 | Proctor Exam |
| Prairie Fibers Weavers and Spinners Guild | 8/6/2016 | Hosted Meeting |
| Sketch Art Club | 8/8/2016 | Hosted Meeting |
| Office for Civil Rights United States Department of Education | 8/8/2016 | Hosted Meeting |
| Grow Grand Island | 8/9/2016 | Hosted Meeting |
| Proctored Exam | 8/10/2016 | Proctor Exam |
| Moonshell Munch and Learn | 8/11/2016 | Adult Cultural Program |
| Proctored Exam | 8/11/2016 | Proctor Exam |
| Library Board Meeting | 8/15/2016 | Library Board |
| Adult Story Time with Dori Bush | 8/15/2016 | General Program |
| Proctor Exam from Michigan St | 8/18/2016 | Proctor Exam |
| Nebraska State Genealogical Society | 8/20/2016 | Hosted Meeting |
| University of Nebraska Public Policy Center | 8/23/2016 | Hosted Meeting |
| World War II - Grand Island and Berlin | 8/27/2016 | Adult Cultural Program |
| The Library is Closed for the Labor Day Holiday | 9/4/2016 | Announcement |
| The Library is Closed for the Labor Day Holiday | 9/5/2016 | Announcement |
| Baby & Toddler Lapsit-Rock and Read | 9/6/2016 | Baby & Toddler Lapsits |
| Book Club for Adults 2016 | 9/6/2016 | Book Club for Adults |
| Pajametime (Family Storyhour) | 9/6/2016 | Family Storytime |
| Storytime (Ready to Read) | 9/7/2016 | Storytime |
| Storytime (Ready to Read) | 9/7/2016 | Storytime |

Call for more details

Library Programs and Activities**August 15, 2016 Report to Board**

| | | |
|--|-----------|---------------------------|
| BookBop-Stories, Music and Movement | 9/7/2016 | Storytime |
| Baby & Toddler Lapsit-Rock and Read | 9/7/2016 | Baby & Toddler Lapsits |
| Grow Grand Island | 9/7/2016 | Hosted Meeting |
| Nebraska Warrior Writers Project | 9/10/2016 | Adult Cultural Program |
| Saturday Storytime-Stories and Crafts | 9/10/2016 | Storytime |
| Lapsits | 9/12/2016 | Lapsits |
| Story Time for Adults with Dori Bush | 9/12/2016 | Adult Summer Reading |
| Baby & Toddler Lapsit-Rock and Read | 9/13/2016 | Baby & Toddler Lapsits |
| Pajametime (Family Storyhour) | 9/13/2016 | Family Storytime |
| Storytime (Ready to Read) | 9/14/2016 | Storytime |
| Storytime (Ready to Read) | 9/14/2016 | Storytime |
| BookBop-Stories, Music and Movement | 9/14/2016 | Storytime |
| Baby & Toddler Lapsit-Rock and Read | 9/14/2016 | Baby & Toddler Lapsits |
| Health & Human Services Division of Developmental Disabilities | 9/14/2016 | Hosted Meeting |
| Nebraska Safety Council | 9/15/2016 | Hosted Meeting |
| Nebraska Warrior Writers Project | 9/17/2016 | Adult Cultural Program |
| Saturday Storytime-Stories and Crafts | 9/17/2016 | Storytime |
| Lapsits | 9/19/2016 | Lapsits |
| Library Board Meeting | 9/19/2016 | Library Board |
| Baby & Toddler Lapsit-Rock and Read | 9/20/2016 | Baby & Toddler Lapsits |
| Pajametime (Family Storyhour) | 9/20/2016 | Family Storytime |
| Nebraska State Genealogical Society | 9/20/2016 | Hosted Meeting |
| Storytime (Ready to Read) | 9/21/2016 | Storytime |
| Storytime (Ready to Read) | 9/21/2016 | Storytime |
| BookBop-Stories, Music and Movement | 9/21/2016 | Storytime |
| Baby & Toddler Lapsit-Rock and Read | 9/21/2016 | Baby & Toddler Lapsits |
| Saturday Storytime-Stories and Crafts | 9/24/2016 | Storytime |
| Edith Abbott Tea Party | 9/25/2016 | Children's Literacy Event |
| Lapsits | 9/26/2016 | Lapsits |
| Baby & Toddler Lapsit-Rock and Read | 9/27/2016 | Baby & Toddler Lapsits |
| Pajametime (Family Storyhour) | 9/27/2016 | Family Storytime |
| Storytime (Ready to Read) | 9/28/2016 | Storytime |
| Storytime (Ready to Read) | 9/28/2016 | Storytime |
| BookBop-Stories, Music and Movement | 9/28/2016 | Storytime |
| Baby & Toddler Lapsit-Rock and Read | 9/28/2016 | Baby & Toddler Lapsits |
| Hall County Community Collaborative | 9/30/2016 | Hosted Meeting |

Call for more details