



City of Grand Island

Tuesday, November 8, 2016

Council Session

Item G-7

**#2016-270 - Approving Final Plat and Subdivision Agreement for
Summerfield Estates Tenth Subdivision**

Staff Contact: Chad Nabity

Council Agenda Memo

From: Regional Planning Commission
Meeting: November 8, 2016
Subject: Summerfield Estates Tenth Subdivision –Final Plat
Presenter(s): Chad Nabity, Regional Planning Director

Background

This property is located north of 13th Street and east of North Road in the City of Grand Island, in Hall County, Nebraska. It has 17 lots on 5.333 acres.

Discussion

The final plat for Summerfield Estates Tenth Subdivision was considered by the Regional Planning Commission at the November 2, 2016 meeting.

A motion was made by Ruge and seconded by Rainforth to **approve** and recommend that City Council **approve** the final plat of Summerfield Estates Tenth Subdivision.

A roll call vote was taken and the motion passed with eight members present (Apfel, O’Neill, Ruge, Robb, Rainforth, Sears, Hoggatt and Kjar) voting in favor and no members present abstaining.

Alternatives

It appears that the Council has the following alternatives concerning the issue at hand. The Council may:

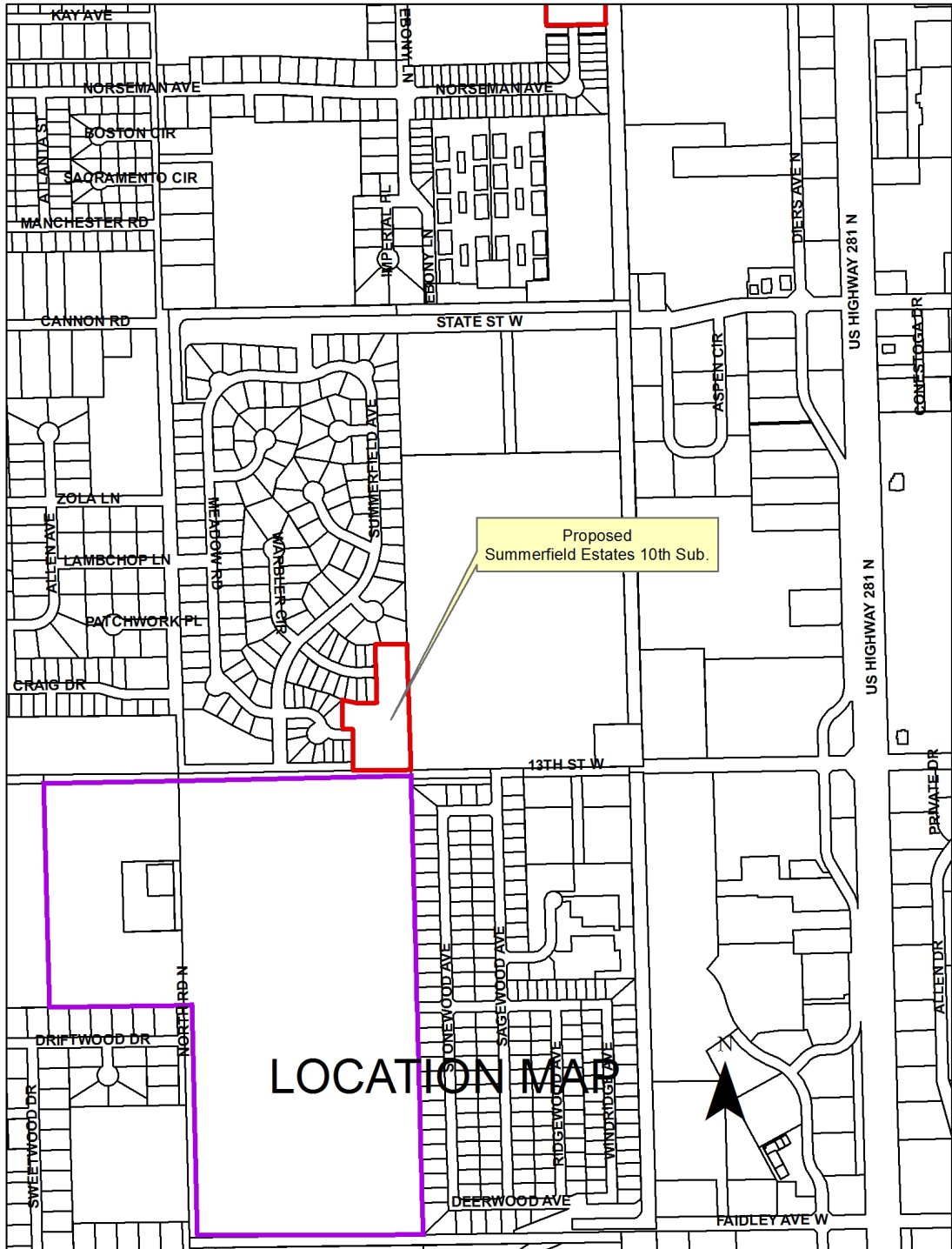
1. Move to approve
2. Refer the issue to a Committee
3. Postpone the issue to future date
4. Take no action on the issue

Recommendation

City Administration recommends that the Council approve the final plat as presented.

Sample Motion

Move to approve as recommended.



**TPCR Developments LLC and Donald R. and Jeri Erickson
Developer/Owner**

TPCR Developments
620 N. Webb Road
Grand Island NE 68803

To create 17 lots located north 13th Street and west of Highway 281, in the City of Grand Island, in Hall County, Nebraska.

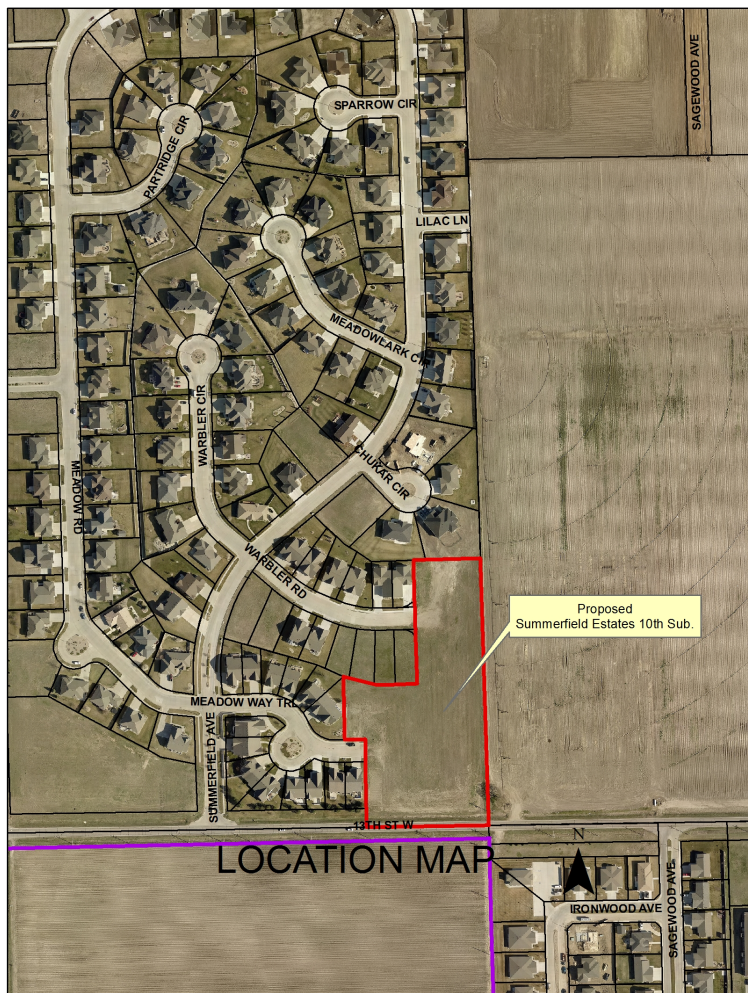
Size: 5.333 acres

Zoning: R3 – Medium Density Residential

Road Access: City roads are available

Water Public: City water is available

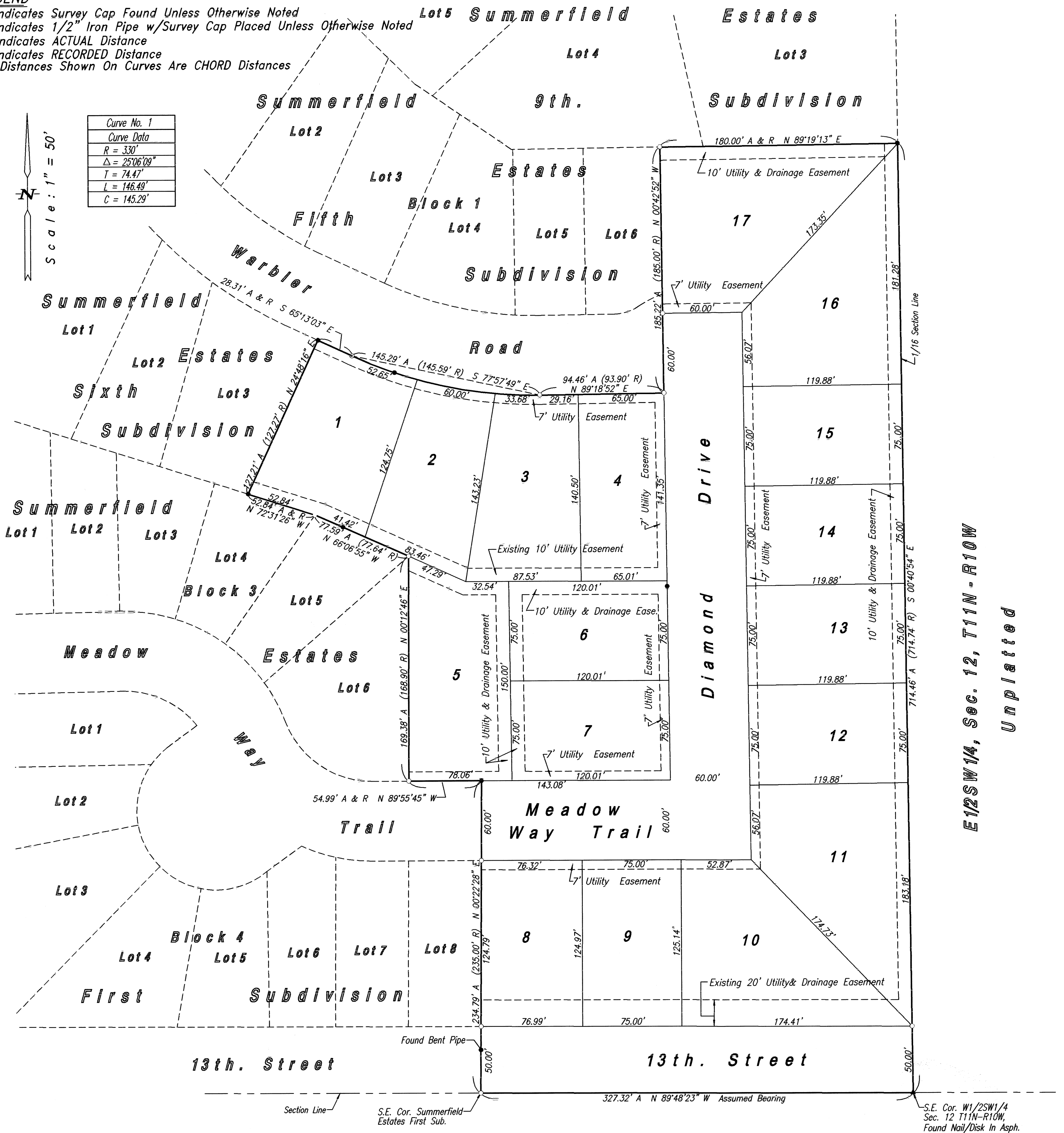
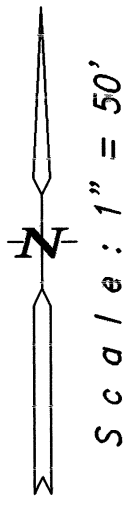
Sewer Public: City sewer is available.



LEGEND

- Indicates Survey Cap Found Unless Otherwise Noted
- Indicates 1/2" Iron Pipe w/Survey Cap Placed Unless Otherwise Noted
- A-Indicates ACTUAL Distance
- R-Indicates RECORDED Distance
- All Distances Shown On Curves Are CHORD Distances

Curve No. 1
Curve Data
R = 330'
Δ = 25°06'09"
T = 74.47'
L = 146.49'
C = 145.29'



E12SW14, Sec. 12, T11N-R10W
Unplatted

SUMMERFIELD ESTATES TENTH SUBDIVISION IN THE CITY OF GRAND ISLAND, NEBRASKA

RESOLUTION 2016-270

WHEREAS TPCR Developments, LLC, A Nebraska Limited Liability Company, and Donald R. and Jeri L. Erickson, being the owners of the land described hereon, have caused the same to be surveyed, subdivided, platted and designated as "SUMMERFIELD ESTATES TENTH SUBDIVISION", to be laid out into 17 Lots, on a Tract of Land comprising all of Lots Five (5) and Six (6), Seven (7) and Eight (8), Block Two (2) Summerfield Estates Fifth Subdivision, all of Lot Four (4), Summerfield Estates Sixth Subdivision and a part of the West Half of the Southwest Quarter (W1/2 SW1/4), all in Section Twelve (12), Township Eleven (11) North, Range Ten (10) West of the 6th P.M., in the City of Grand Island, Hall County, Nebraska, and has caused a plat thereof to be acknowledged by it; and

WHEREAS, a copy of the plat of such subdivision has been presented to the Boards of Education of the various school districts in Grand Island, Hall County, Nebraska, as required by Section 19-923, R.R.S. 1943; and

WHEREAS, a form of subdivision agreement has been agreed to between the owner of the property and the City of Grand Island.

NOW, THEREFORE, BE IT RESOLVED BY THE MAYOR AND COUNCIL OF THE CITY OF GRAND ISLAND, NEBRASKA, that the form of subdivision agreement herein before described is hereby approved, and the Mayor is hereby authorized to execute such agreement on behalf of the City of Grand Island.

BE IT FURTHER RESOLVED that the final plat of SUMMERFIELD ESTATES TENTH SUBDIVISION, as made out, acknowledged, and certified, is hereby approved by the City Council of the City of Grand Island, Nebraska, and the Mayor is hereby authorized to execute the approval and acceptance of such plat by the City of Grand Island, Nebraska.

- - -

Adopted by the City Council of the City of Grand Island, Nebraska, November 8, 2016.

Jeremy L. Jensen, Mayor

Attest:

RaNae Edwards, City Clerk

Approved as to Form	☐ _____
November 4, 2016	☐ City Attorney