



City of Grand Island

Tuesday, September 13, 2016

Council Session

Item E-9

Public Hearing on Annual Report by the Grand Island Area Economic Development Corporation/Citizen Advisory Review Committee on the Economic Development Program Plan

Council action will take place under Resolutions item I-3.

Staff Contact: Dave Taylor - EDC President

Council Agenda Memo

From: Marlan Ferguson, City Administrator

Meeting: September 13, 2016

Subject: Public Hearing Concerning the Annual Report by the Citizen Advisory Review Committee on the Economic Development Program Plan

Presenter(s): Dave Taylor, EDC President

Background

The voters of the City of Grand Island approved an economic development plan at the November 6, 2012 election. Subsequent to the election, the city has adopted an ordinance that establishes the economic development plan and a Citizen Advisory Review Committee to oversee the process of approving applications for economic development incentives. The Citizen Advisory Review Committee is required by State Statute and the Grand Island City Code to make an annual report to the City Council.

Discussion

The Citizen Advisory Review Committee has been conducting regular meetings during the last six months as required by the City Code and the Nebraska Statutes. The committee looks forward to receiving and reviewing meritorious applications for consideration in the future. The committee received the annual report from the Economic Development Corporation at its meeting of September 1, 2016 and voted to forward it on to the City Council for its review and acceptance.

Alternatives

It appears that the Council has the following alternatives concerning the issue at hand. The Council may:

1. Accept the annual report of the Citizen Advisory Review Committee.
2. Do not accept the annual report of the Citizen Advisory Review Committee.

Recommendation

City Administration recommends that the Council accept the annual report of the Citizen Advisory Review Committee.

Sample Motion

Move to accept the annual report of the Grand Island Area Economic Development Corporation/Citizen Advisory Review Committee.



Annual Update



LB840 Impacts

LB-840 Funds invested in Job Creation:

\$4,230,100

Jobs Created:

954

Annual Wages Created from Incentives:

\$29,151,096

2014-2015 Average Wage Per Job Created:

\$16.75



LB840 Funding Status

LB840 balance as of 3/3/2016	\$990,484.81
-------------------------------------	---------------------

LB840 job creation funds for GIX Logistics	(\$85,500)
--	------------

Ending LB840 job creation funds	\$904,984.81
---------------------------------	--------------

*Will be presenting two LB840 applications to you today



Active LB840 Projects

- **Bosselman Tank & Trailer**

- Add 8 employees
- Expires February 2017

- **GIX Logistics**

- Add 26 employees
- Expires June 2019

- Looking forward...



Grand Island Area
Economic
Development
Corporation

RIMS II

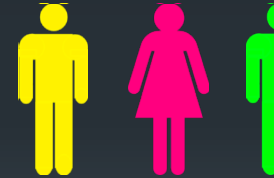
- Direct effect
 - Earnings
 - Employment



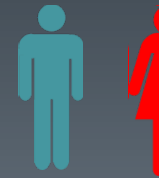
Target
Industry



Multiplier

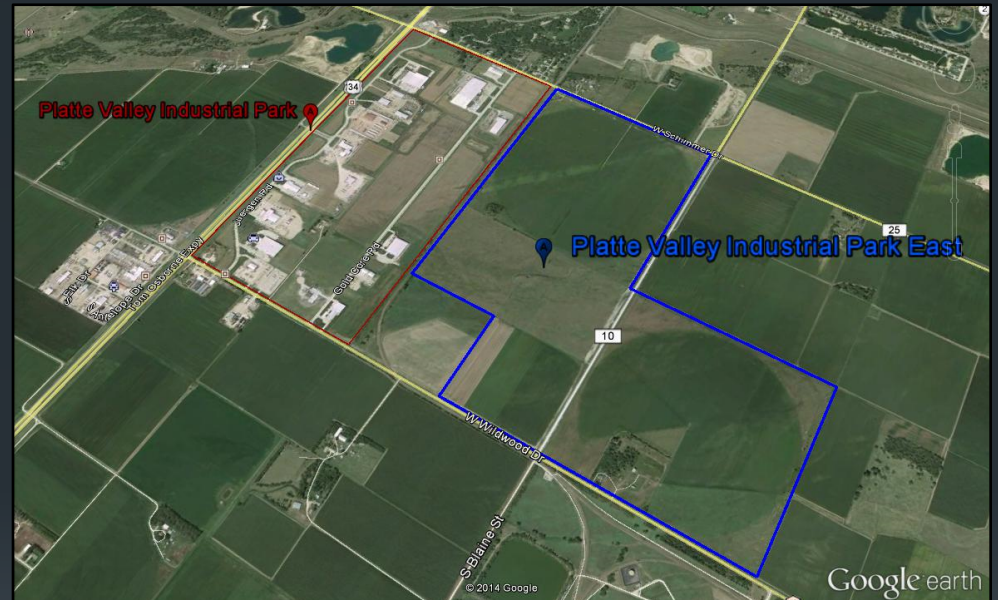


Multiplier





Cornhusker Industrial Park (260 acres)



Platte Valley Industrial Park (2 lots / 9.5 acres)
Platte Valley Industrial Park- East (260 acres)
Homestead (160 acres)



Grand Island Area
Economic
Development
Corporation

Welcome to PVIPW, Inland Truck Parts Company





Grand Island Area
Economic
Development
Corporation

Welcome to PVIPE, Hendrix-ISA





Grand Island Area
Economic
Development
Corporation





Grand Island Area
Economic
Development
Corporation



60

BRE visits with businesses

15

Inbound marketing visits

6

Outbound marketing visits

6

DED visits to Grand Island

20

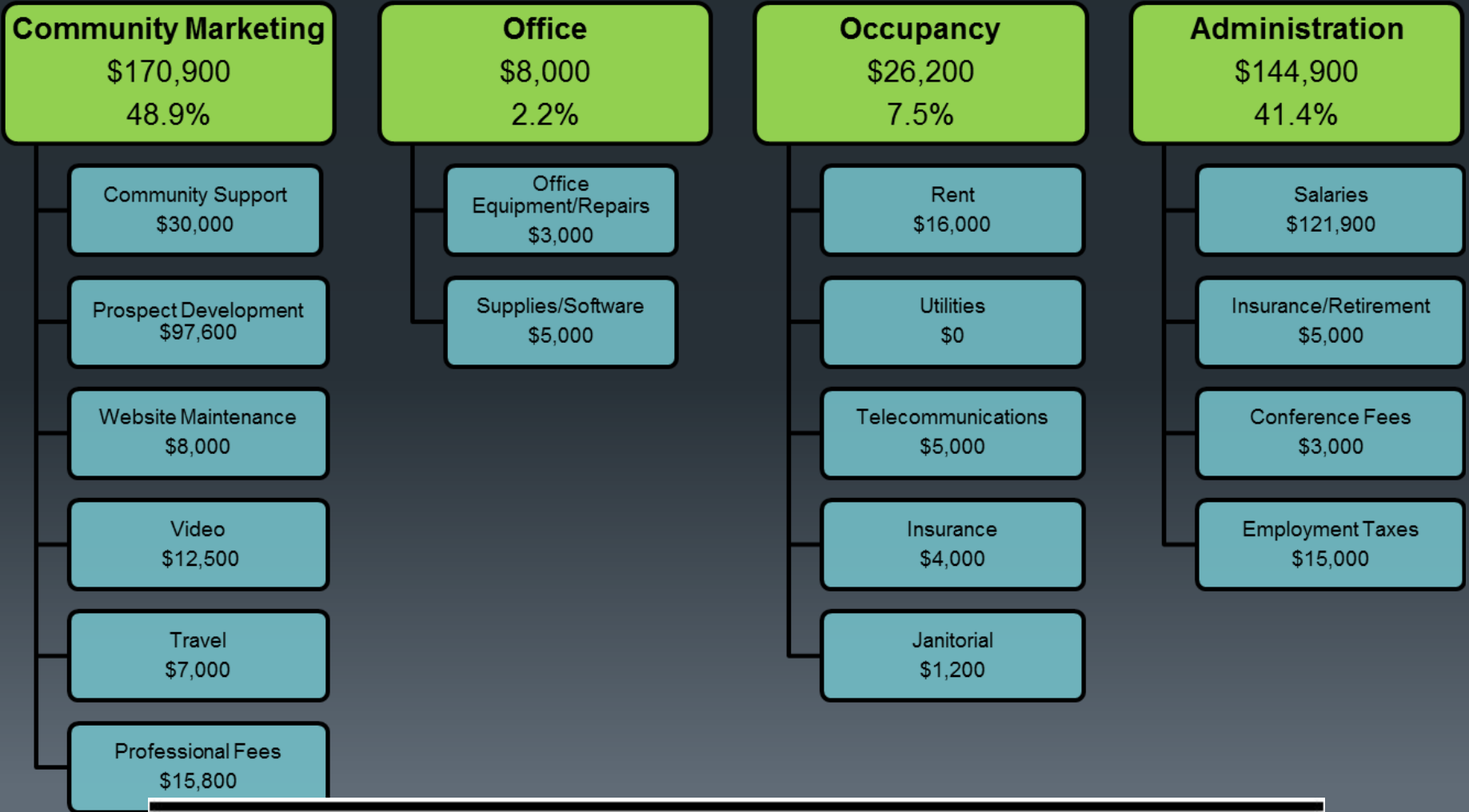
City & State initiatives

Initiative	Action Item	Progress
1.1	Launch a collaborative Business Retention and Expansion outreach program that seeks to facilitate expansions and mitigate layoffs by conducting a series of site visits and survey with existing businesses in and around Grand Island.	Ongoing partnership with the Chamber of Commerce, State DED, and area businesses. September 20- BRE Blitz with State DED
1.2 & 5.3	Launch the Grow Grand Island Export Initiative to support the development of new international trade relationships for Grand Island area manufacturers.	EDC staff wrote an editorial piece for the Grand Island Independent, highlighting the importance a diverse economy
1.5	Work with neighboring communities in Central Nebraska to evaluate the potential benefits of developing regional cluster councils to address sector-specific issues and challenges that are common throughout Central Nebraska	Collaborations with neighbors on legislative issues, State incentives, and industry inputs & outputs.

Initiative	Action Item	Progress
3.4 & 3.5	Continue to Market the Grand Island Community to both internal and external audiences, utilizing the GIAEDC website and other electronic tools.	Continue to connect with target markets
3.6	Maintain strong relationships with the State DED overseeing business recruitment and business development.	Continued collaboration with State DED re: existing business expansion projects September 20- BRE Blitz
5.2	Continue to work with NDED and the City of Grand Island to develop industrial sites with updated infrastructure and is considered “shovel ready” for development.	



Utilization of LB-840 Operating Funds



Thank you!

The GIAEDC staff and Board of Trustees request approval of \$350,000 in LB840 operating funds for 2017.

