



City of Grand Island

Tuesday, July 26, 2016

Council Session

Item G-4

#2016-173 - Approving Preliminary and Final Plat and Subdivision Agreement for East Park on Stuhr Subdivision

Staff Contact: Chad Nabity

Council Agenda Memo

From: Regional Planning Commission

Meeting: July 26, 2016

Subject: East Park on Stuhr Subdivision – Preliminary Plat & Final Plat

Presenter(s): Chad Nabity, Regional Planning Director

Background

East Park on Stuhr Subdivision is located north of Bismark Rd., and west of Stuhr Rd., in the City of Grand Island, Hall County, Nebraska 1 Lot and 5.25 acres.

Discussion

The preliminary and final plat for East Park on Stuhr Subdivision was considered by the Regional Planning Commission at the July 6, 2016 meeting.

A motion was made by Hoggatt and seconded by Rainforth to **approve** and recommend that City Council **approve** the preliminary plat and final plat of East Park on Stuhr Subdivision.

A roll call vote was taken and the motion passed with 8 members present (Huisman, Apfel, Sears, O'Neill, Maurer, Rainforth, Hoggatt and Kjar) voting in favor and no members present abstaining.

Alternatives

It appears that the Council has the following alternatives concerning the issue at hand. The Council may:

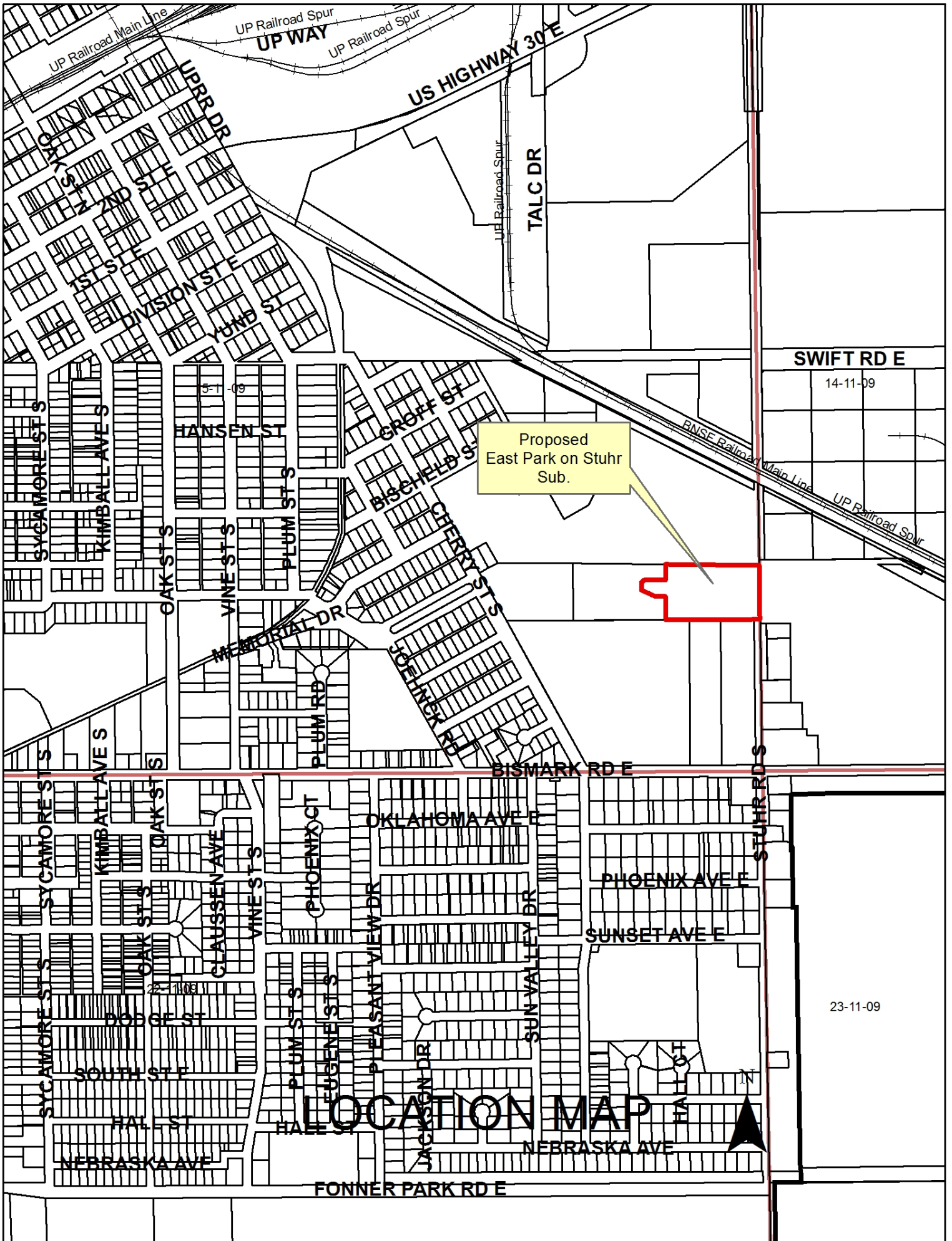
1. Move to approve
2. Refer the issue to a Committee
3. Postpone the issue to future date
4. Take no action on the issue

Recommendation

City Administration recommends that the Council approve the final plat as presented.

Sample Motion

Move to approve as recommended.



Developers/Owners

Hoppe Inc.
PO Box 6036
Lincoln NE 68506

To create 1 lot located north of Bismark Rd., and west of Stuhr Rd., in the City of Grand Island, Hall County, Nebraska.

Size: 5.25 acres.

Zoning: RD – Residential Development Zone.

Road Access: Public streets are available.

Water Public: Water is available.

Sewer Public: Sewer is available.



RESOLUTION 2016-173

WHEREAS, Hoppe Inc., being the owners of the land described hereon, has caused same to be surveyed, subdivided, platted and designated as "EAST PARK ON STUHR SUBDIVISION", a tract of land located in part of the Southeast Quarter (SE1/4) of Section Fifteen (15), Township Eleven (11) North, Range Nine (9), in the City of Grand Island, Hall County, Nebraska, and has caused a plat thereof to be acknowledged by them; and

WHEREAS, a copy of the plat of such subdivision has been presented to the Boards of Education of the various school districts in Grand Island, Hall County, Nebraska, as required by Section 19-923, R.R.S. 1943; and

WHEREAS, a form of subdivision agreement has been agreed to between the owner of the property and the City of Grand Island.

NOW, THEREFORE, BE IT RESOLVED BY THE MAYOR AND COUNCIL OF THE CITY OF GRAND ISLAND, NEBRASKA, that the form of subdivision agreement hereinbefore described is hereby approved, and the Mayor is hereby authorized to execute such agreement on behalf of the City of Grand Island.

BE IT FURTHER RESOLVED that the final plat of EAST PARK ON STUHR SUBDIVISION, as made out, acknowledged, and certified, is hereby approved by the City Council of the City of Grand Island, Nebraska, and the Mayor is hereby authorized to execute the approval and acceptance of such plat by the City of Grand Island, Nebraska.

- - -

Adopted by the City Council of the City of Grand Island, Nebraska, July 26, 2016.

Jeremy L. Jensen, Mayor

Attest:

RaNae Edwards, City Clerk

Approved as to Form	☐ _____
July 22, 2016	☐ City Attorney