



City of Grand Island

Tuesday, May 10, 2016

Council Session

Item G-11

#2016-112 - Approving Acquisition of Utility Easement - (#2) - Capital & Broadwell Avenues (U.S. Department of Veterans Affairs)

This item relates to the aforementioned Public Hearing item E-5.

Staff Contact: Tim Luchsinger, Stacy Nonhof

RESOLUTION 2016-112

WHEREAS, a public utility easement is required by the City of Grand Island from the U.S. Department of Veterans Affairs (#2), to survey, construct, inspect, maintain, repair, replace, relocate, extend, remove, and operate thereon, public utilities and appurtenances, including lines and transformers; and;

WHEREAS, a public hearing was held on May 10, 2016 for the purpose of discussing the proposed acquisition of an easement (#2) located in the City of Grand Island, Hall County, Nebraska; and more particularly described as follows:

Beginning at the northeast corner of said Lot One (1);thence running S00°16'09"W, on the west line of said Lot One (1), a distance of Eleven and Six Hundredths (11.06) feet, to the ACTUAL Point of Beginning; thence running S89°43'07"E, a distance of Fourteen and Fifty Three Hundredths (14.53) feet; thence running N61°37'53"E, a distance of One Hundred Ninety Four and Twenty Two Hundredths (194.22) feet; thence running N01°12'35"E, a distance of Three Hundred Fifty Seven and Forty Seven Hundredths (357.47) feet, to a point on the north line of said Lot Two (2); thence running S89°13'44"E, on the north line of said Lots Two (2) and Three (3), a distance of Twenty (20.00) feet; thence running S01°12'35"W, a distance of One Hundred Thirty Six and Fifty Seven Hundredths (136.57) feet, thence running S88°53'28"E, a distance of Two hundred Forty Six and Eight Four Hundredths (246.84) feet; thence running N60°12'04"E, a distance of Twenty and Eighty Hundredths (20.80) feet; thence running S29°47'56" E, a distance of Twenty (20.00) feet; thence running S60°12'04"W, a distance of Twenty Six and Thirty Three Hundredths (26.33) feet; thence running N88°53'28"W, a distance of Two Hundred Fifty Two and Forty One Hundredths (252.41) feet; thence running S01°12'35"W, a distance of Two Hundred Twelve and Sixty Nine Hundredths (212.69) feet; thence running S61°37'53"W, a distance of Sixty Three and Seventeen Hundredths (63.17) feet; thence running S28°22'07"E, a distance of Twenty Three and Five Hundredths (23.05) feet; thence running S61°37'53"W, a distance of Twenty (20.00) feet; thence running N28°22'07"W, a distance of Twenty Three and Five Hundredths (23.05) feet; thence running S61°37'53"W, a distance of One Hundred Twenty Seven and Eighty One Hundredths (127.81) feet; thence running N89°43'07"W, a distance of Four and Eight One Hundredths (4.81) feet; thence running S00°16'09"W, a distance of Seventeen and Twenty Eight Hundredths (17.28) feet; thence running N89°43'07"W, a distance of Fourteen and Eighty Three Hundredths (14.83) feet, to a point on the west line of said Lot One (1); thence running N00°16'09"E, on the west line of said Lot One (1), a distance of Thirty Seven and Twenty Eight Hundredths (37.28) feet, to the ACTUAL Point of Beginning and containing 0.410 acres more or less.

| | |
|---------------------|-----------------|
| Approved as to Form | ▣ _____ |
| May 6, 2016 | ▣ City Attorney |

NOW, THEREFORE, BE IT RESOLVED BY THE MAYOR AND COUNCIL OF THE CITY OF GRAND ISLAND, NEBRASKA, that the City of Grand Island be, and hereby is, authorized to acquire a public utility easement from the U.S. Department of Veterans Affairs, on the above-described tract of land.

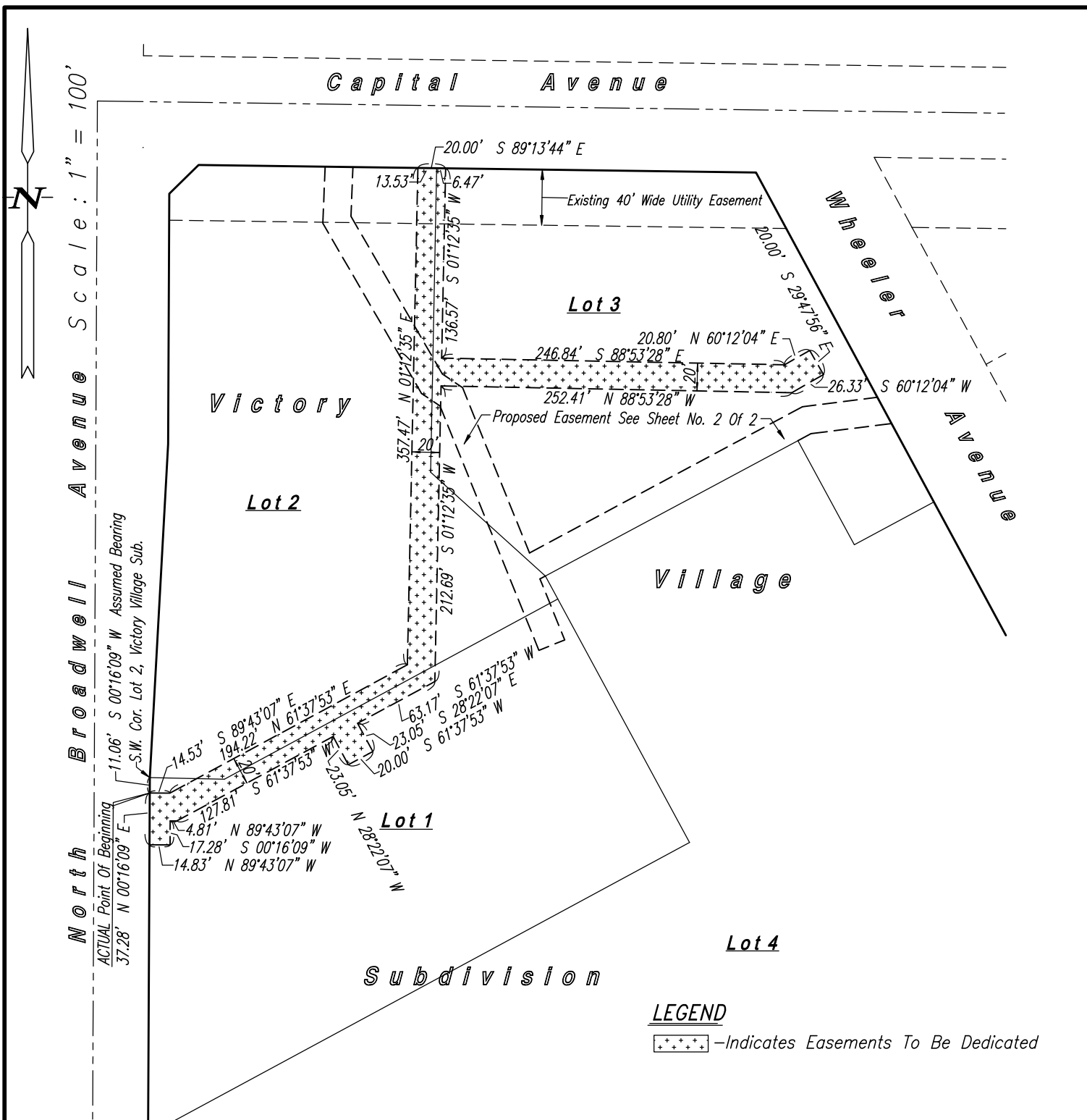
- - -

Adopted by the City Council of the City of Grand Island, Nebraska, May 10, 2016.

Jeremy L. Jensen, Mayor

Attest:

RaNae Edwards, City Clerk



Description (20' Wide Utility Easement)

A tract of land comprising a part of Lots One (1), Two (2) and Three (3), Victory Village Subdivision, in the City of Grand Island, Hall County, Nebraska and more particularly described as follows:

Beginning at the northwest corner of said Lot One (1); thence running S00°16'09" W, on the west line of said Lot One (1), a distance of Eleven and Six Hundredths (11.06) feet, to the ACTUAL Point of Beginning; thence running S89°43'07"E, a distance of Fourteen and Fifty Three Hundredths (14.53) feet; thence running N61°37'53"E, a distance of One Hundred Ninety Four and Twenty Two Hundredths (194.22) feet; thence running N01°12'35"E, a distance of Three Hundred Fifty Seven and Forty Seven Hundredths (357.47) feet, to a point on the north line of said Lot Two (2); thence running S89°13'44"E, on the north line of said Lots Two (2) and Three (3), a distance of Twenty (20.00) feet; thence running S01°12'35"W, a distance of One Hundred Thirty Six and Fifty Seven Hundredths (136.57) feet; thence running S88°53'28"E, a distance of Two hundred Forty Six and Eighty Four Hundredths (246.84) feet; thence running N60°12'04"E, a distance of Twenty and Eighty Hundredths (20.80) feet; thence running S29°47'56"E, a distance of Twenty (20.00) feet; thence running S60°12'04"W, a distance of Twenty Six and Thirty Three Hundredths (26.33) feet; thence running N88°53'28"W, a distance of Two Hundred Fifty Two and Forty One Hundredths (252.41) feet; thence running S01°12'35"W, a distance of Two Hundred Twelve and Sixty Nine Hundredths (212.69) feet; thence running S61°37'53"W, a distance of Sixty Three and Seventeen Hundredths (63.17) feet; thence running S28°22'07"E, a distance of Twenty Three and Five Hundredths (23.05) feet; thence running S61°37'53"W, a distance of Twenty (20.00) feet; thence running N28°22'07"W, a distance of Twenty Three and Five Hundredths (23.07) feet; thence running S61°37'53"W, a distance of One Hundred Twenty Seven and Eighty One Hundredths (127.81) feet; thence running N89°43'07"W, a distance of Four and Eighty One Hundredths (4.81) feet; thence running S00°16'09"W, a distance of Seventeen and Twenty Eight Hundredths (17.28) feet; thence running N89°43'07"W, a distance of Fourteen and Eighty Three Hundredths (14.83) feet, to a point on the west line of said Lot One (1); thence running N00°16'09"E, on the west line of said Lot One (1), a distance of Thirty Seven and Twenty Eight Hundredths (37.28) feet, to the ACTUAL Point of Beginning and containing 0.410 acres more or less.

Exhibit 'A'

Date: January 15, 2016

Sheet No. 1 Of 2



2510 NORTH WEBB ROAD, GRAND ISLAND, NEBRASKA 68802 P.O.BOX 549
E-MAIL surveyor@computer-concepts.com PHONE (308) 382-1472 FAX (308) 382-1423