



City of Grand Island

Tuesday, May 10, 2016

Council Session

Item G-10

#2016-111 - Approving Acquisition of Utility Easement - (#1) - Capital & Broadwell Avenues (U.S. Department of Veterans Affairs)

This item relates to the aforementioned Public Hearing item E-4.

Staff Contact: Tim Luchsinger, Stacy Nonhof

RESOLUTION 2016-111

WHEREAS, a public utility easement is required by the City of Grand Island from the U.S. Department of Veterans Affairs (#1), to survey, construct, inspect, maintain, repair, replace, relocate, extend, remove, and operate thereon, public utilities and appurtenances, including lines and transformers; and;

WHEREAS, a public hearing was held on May 10, 2016 for the purpose of discussing the proposed acquisition of an easement (#1) located in the City of Grand Island, Hall County, Nebraska; and more particularly described as follows:

Beginning at the northeast corner of said Lot Two (2); thence running N89°13'44"W, on the north line of said Lot Two (2), a distance of Sixty and Twenty Seven Hundredths (60.27) feet, to the ACTUAL Point of Beginning; thence running S02°17'20"W, a distance of Thirty Five and Forty Eight Hundredths (35.48) feet; thence running S30°06'54"E a distance of One Hundred Thirty One and Nine Hundredths (131.09) feet; thence running S55°54'09"E, a distance of Seventeen and Fifty Three Hundredths (17.53) feet; thence running S22°03'27"E, a distance of One Hundred Twenty Eight and Twenty Eight Hundredths (128.28) feet; thence running N61°50'07"E, a distance of Two Hundred Twenty Two and Eighty Four Hundredths (222.84) feet; thence running N82°50'19"E, a distance of Fifty Four and Thirty Four Hundredths (54.34) feet, to a point on the easterly line of said Lot Three (3); thence running S28°22'40"E, on the easterly line of said Lot Three (3), a distance of Twenty One and Forty Five Hundredths (21.45) feet; thence running S82°50'19"W, a distance of Fifty Eight and Thirty Nine Hundredths (58.39) feet; thence running S61°50'07"W, on the southerly line of said Lot Three (3), if extended, a distance of Two Hundred Twenty One and Twenty Eight Hundredths (221.28) feet; thence running S22°03'27"E, a distance of Forty Seven and Thirty Eight Hundredths (47.38) feet; thence running S67°56'33"W, a distance of Twenty (20.00) feet; thence running N22°03'27"W, a distance of One Hundred Eighty Nine and Sixty Eight Hundredths (189.68) feet; thence running N55°54'09"W, a distance of Sixteen and Three Hundredths (16.03) feet; thence running N30°06'54"W, a distance of One Hundred Forty One and Forty Eight Hundredths (141.48) feet; thence running N02°17'20"E, a distance of Forty and Seventy Six Hundredths (40.76) feet, to a point on the north line of said Lot Two (2); thence running S89°13'44"E, on the north line of said Lot Two (2), a distance of Twenty and One Hundredth (20.01) feet, to the ACTUAL Point of Beginning and containing 0.304 acres more or less.

NOW, THEREFORE, BE IT RESOLVED BY THE MAYOR AND COUNCIL OF THE CITY OF GRAND ISLAND, NEBRASKA, that the City of Grand Island be, and hereby is, authorized to acquire a public utility easement from the U.S. Department of Veterans Affairs, on the above-described tract of land.

- - -

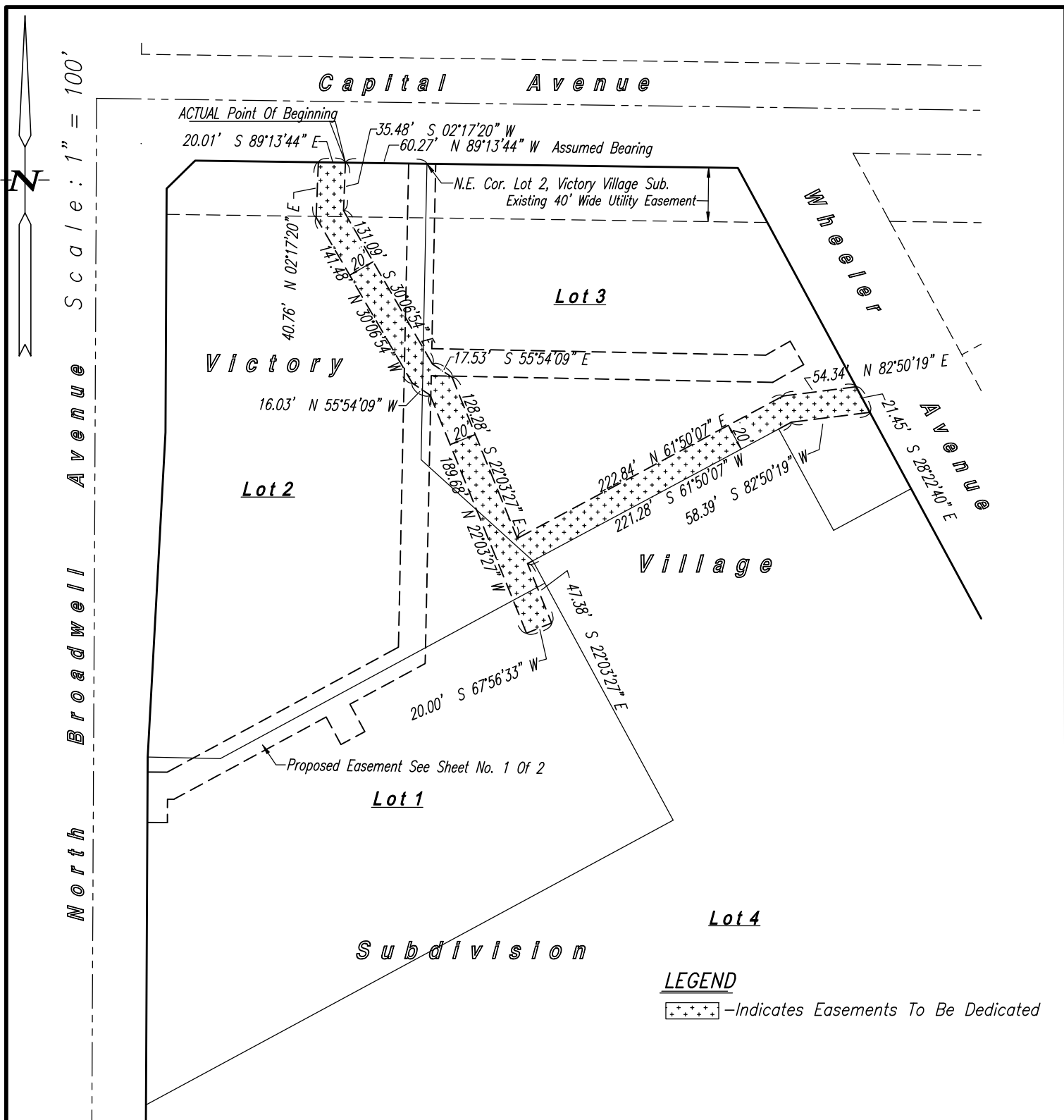
Approved as to Form	by _____
May 6, 2016	City Attorney

Adopted by the City Council of the City of Grand Island, Nebraska, May 10, 2016.

Jeremy L. Jensen, Mayor

Attest:

RaNae Edwards, City Clerk



Description (20' Wide Utility Easement)

A tract of land comprising a part of Lots One (1), Two (2) and Three (3), Victory Village Subdivision, in the City of Grand Island, Hall County, Nebraska and more particularly described as follows:

Beginning at the northeast corner of said Lot Two (2); thence running N89°13'44"W, on the north line of said Lot Two (2), a distance of Sixty and Twenty Seven Hundredths (60.27) feet, to the ACTUAL Point of Beginning; thence running S02°17'20"W, a distance of Thirty Five and Forty Eight Hundredths (35.48) feet; thence running S30°06'54"E, a distance of One Hundred Thirty One and Nine Hundredths (131.09) feet; thence running S55°54'09"E, a distance of Seventeen and Fifty Three Hundredths (17.53) feet; thence running S22°03'27"E, a distance of One Hundred Twenty Eight and Twenty Eight Hundredths (128.28) feet; thence running N61°50'07"E, a distance of Two Hundred Twenty Two and Eighty Four Hundredths (222.84) feet; thence running N82°50'19"E, a distance of Fifty Four and Thirty Four Hundredths (54.34) feet, to a point on the easterly line of said Lot Three (3); thence running S28°22'40"E, on the easterly line of said Lot Three (3), a distance of Twenty One and Forty Five Hundredths (21.45) feet; thence running S82°50'19"W, a distance of Fifty Eight and Thirty Nine Hundredths (58.39) feet; thence running S61°50'07"W on the southerly line of said Lot Three (3), if extended, a distance of Two Hundred Twenty One and Twenty Eight Hundredths (221.28) feet; thence running S22°03'27"E, a distance of Forty Seven and Thirty Eight Hundredths (47.38) feet; thence running S67°56'33"W, a distance of Twenty (20.00) feet; thence running N22°03'27"W, a distance of One Hundred Eight Nine and Sixty Eight Hundredths (189.68) feet; thence running N55°54'09"W, a distance of Sixteen and Three Hundredths (16.03) feet; thence running N30°06'54"W, a distance of One Hundred Forty One and Forty Eight Hundredths (141.48) feet; thence running N02°17'20"E, a distance of Forty and Seventy Six Hundredths (40.76) feet, to a point on the north line of said Lot Two (2); thence running S89°13'44"E, on the north line of said Lot Two (2), a distance of Twenty and One Hundredth (20.01) feet, to the ACTUAL Point of Beginning and containing 0.304 acres more or less.

Exhibit 'A'

Date: January 15, 2016 Sheet No. 2 Of 2



2510 NORTH WEBB ROAD, GRAND ISLAND, NEBRASKA 68802 P.O. BOX 549
E-MAIL surveyor@computer-concepts.com PHONE (308) 382-1472 FAX (308) 382-1423