



City of Grand Island

Tuesday, March 8, 2016

Council Session

Item E-3

Public Hearing on Acquisition of Utility Easement at 2304 Memorial Park Road (Joan Kirkpatrick)

Council action will take place under Consent Agenda item G-8.

Staff Contact: Tim Luchsinger, Stacy Nonhof

Council Agenda Memo

From: Timothy Luchsinger, Utilities Director
Stacy Nonhof, Assistant City Attorney

Meeting: March 8, 2016

Subject: Acquisition of Utility Easement – 2304 Memorial Park Road – Joan Kirkpatrick

Presenter(s): Timothy Luchsinger, Utilities Director

Background

Nebraska State Law requires that acquisition of property must be approved by City Council. The Utilities Department needs to acquire an easement relative to the property of Joan Kirkpatrick, located through a part of Lot One (1) Grand Island Industrial Park West Subdivision (2304 Memorial Park Road), in the City Of Grand Island, Hall County, in order to have access to install, upgrade, maintain, and repair power appurtenances, including lines and transformers.

Discussion

The Utilities Department has an existing overhead power line along the southerly side of the Kirkpatrick property. The line was originally built in approximately 1951. At the time of its initial installation, no easement was acquired as it only severed the grantor's property. The power line needs to be rebuilt, upgraded and brought up to current design configuration. The easement will clear up the gap in access for operation and maintenance of the electrical infrastructure.

Alternatives

It appears that the Council has the following alternatives concerning the issue at hand. The Council may:

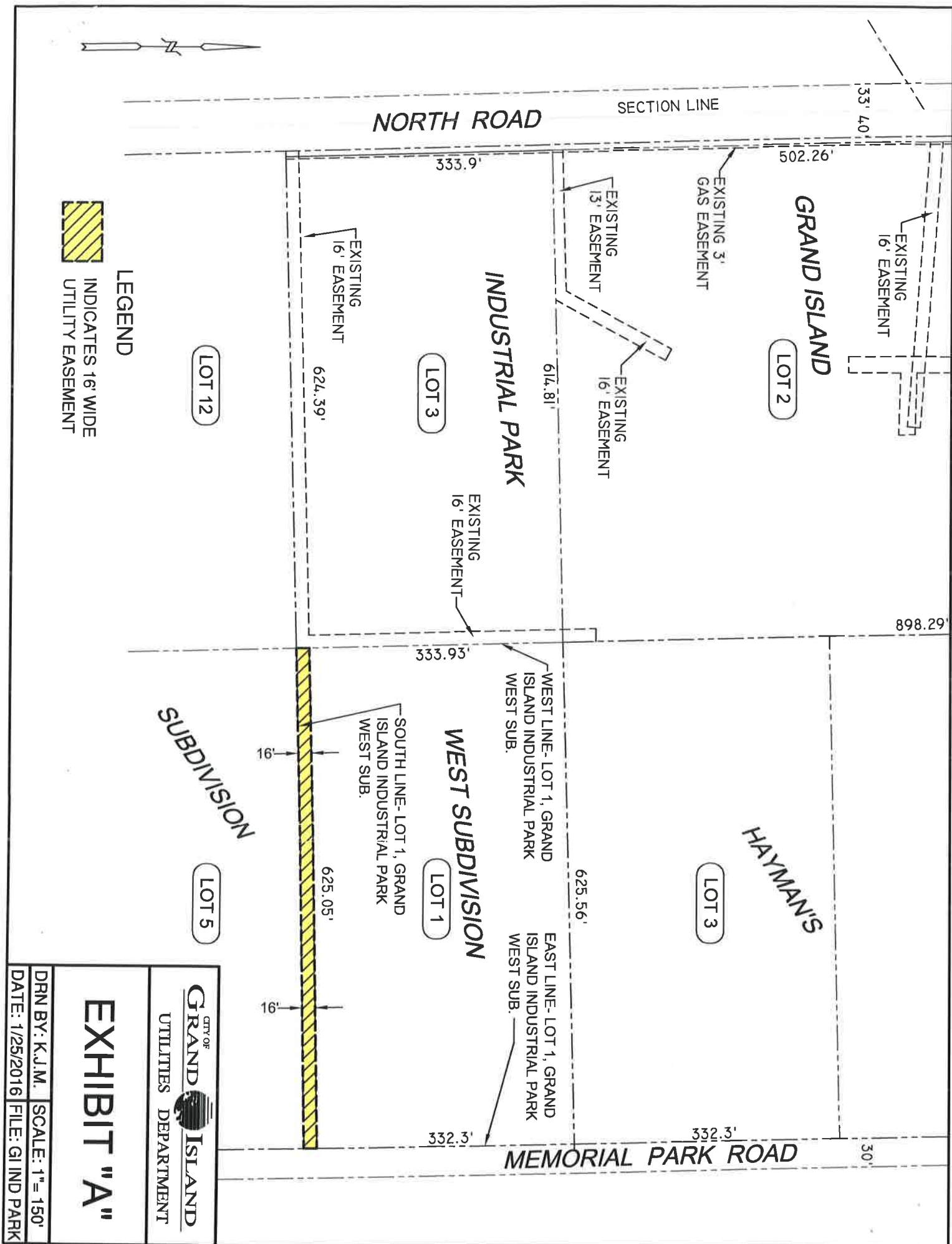
1. Make a motion to approve
2. Refer the issue to a Committee
3. Postpone the issue to future date
4. Take no action on the issue

Recommendation

City Administration recommends that the Council approve the resolution for the acquisition of the easement for one dollar (\$1.00).

Sample Motion

Motion to approve acquisition of the Utility Easement.



LEGEND



INDICATES 16' WIDE
UTILITY EASEMENT

SUBDIVISION

EXHIBIT "A"

CITY OF GRAND ISLAND
UTILITIES DEPARTMENT

DRN BY: K.J.M. SCALE: 1"= 150'
DATE: 1/25/2016 FILE: GI IND PARK