



City of Grand Island

Tuesday, January 12, 2016

Council Session

Item G-9

**#2016-7 - Approving Change Order No. 5 for North Interceptor
Phase II; Project No. 2013-S-4**

Staff Contact: John Collins, P.E. - Public Works Director

Council Agenda Memo

From: Terry Brown PE, Assistant Public Works Director

Meeting: January 12, 2016

Subject: Approving Change Order No. 5 for North Interceptor Phase II;
Project No. 2013-S-4

Presenter(s): John Collins PE, Public Works Director

Background

Public Works Staff in conjunction with Black & Veatch of Kansas City, Missouri have jointly called out improvements through 2037 for the Wastewater Treatment Plant and collection system according to the Collection System Master Plan (B&V January 2014). The current North Interceptor project will replace aged force main, eliminate six (6) lift stations with the potential for more, provide new sanitary services, and increase the capacity of the sewer system on the north side of Grand Island.

The new North Interceptor gravity sewer interceptor route was developed to incorporate and partner with other utilities for the Capital Avenue Widening Project and the new Headworks Pumping Station Project at the Wastewater Treatment Plant.

A phased approach of constructing the North Interceptor was developed as follows:

- Phase I - Wastewater Treatment Plant to 7th Street / Skypark Road
- Phase II (Part A) - 7th Street / Skypark Road to Broadwell Avenue
- Phase II (Part B) - Broadwell Avenue to Webb Road
- Phase II (Part C) - Webb Road to Diers Avenue (Lift Station No. 19)

Phase I reached substantial completion on April 8, 2014. Once final lien waivers are received, the project can be formally closed.

Phase II Part B reached substantial completion on April 15, 2015. Phase II (Part A) is nearly complete and a large portion of Phase II (Part C) has been completed. The lift station abandonments (Bid Sections D, E, G, H and I) will follow the completion of Phase II (A, B, and C), and are anticipated to begin this February.

On September 9, 2014, Resolution No. 2014-284, City Council awarded, Project 2013-S-4, North Interceptor Phase II to S.J. Louis Construction, Inc. of Rockville, Minnesota, in the amount of \$21,479,537.50.

City Council approved Resolution No. 2015-39 on February 10, 2015, which established new unit prices for installed storm and sanitary sewers which are embedded with native sand material in lieu of the imported granular embedment specified in the contract documents. The potential savings is anticipated to be around \$300,000 where native sand is thought to be suitable and may be used for up to 20,795 feet of pipe.

On March 23, 2015, by Resolution No. 2015-74, City Council approved Change Order No. 2 which changed the methodology of the trenchless crossing from micro tunneling to a direct jacked tunnel using a tunnel boring machine, resulting in a decreased unit price. Two (2) locations were suggested for this change; Broadwell Avenue at Capital Avenue and Webb Road/Northwest Crossings property at Capital Avenue. An overall contract deduction of \$210,003 was achieved, resulting in a revised contract amount of \$21,269,534.

On June 23, 2015, by Resolution No. 2015-160, City Council approved Change Order No. 3, which addressed: Unknown and unplanned restraint at the existing 18" waterline that crosses Capital Avenue just east of Webb Road; Additional storm sewer work east of St. Paul Road as needed to fill in a portion of the utility ditch and provide access to the new manhole; and As-Built quantities for Phase II (Part B).

An overall net change of the contract amount resulted in an increase of \$56,541, for a revised contract amount of \$21,326,075.

On August 11, 2015, by Resolution No. 2015-214, City Council approved Change Order No. 4, which allowed for an open cut at the intersection of Capital Avenue and Broadwell Avenue for installation of the north interceptor, rerouting of the dewatering discharge, and several modifications to the existing storm sewer at this intersection. An overall contract decrease of \$40,651.39 was reached, resulting in a revised contract amount of \$21,285,423.51.

Discussion

Public Works Administration is requesting Change Order No. 5 for North Interceptor Phase II; Project No. 2013-S-4. The change order covers costs associated with nine (9) unanticipated items as itemized below:

- 1) Dewatering reroute near Webb Road in coordination with the Capital Avenue Paving Project.
- 2) Additional work outside of established bid prices is included here regarding the 8-inch sanitary sewer line extension as part Tap District 537T.
- 3) Additional storm sewer work in St. Paul Road in which existing corrugated metal pipe collapsed upon excavation.
- 4) Retrofitting a new standard sanitary sewer manhole in St. Paul Road to a drop manhole. *The entire cost of the new drop manhole is included here. The reduction in one (1) standard manhole will be seen in the final change order that consolidates all installed quantities.*
- 5) Additional storm sewer removal and replacement near the Burlington Northern Santa Fe Railroad in order to facilitate tunneling operations.

- 6) Final remaining storm sewer items not covered in CO#4 for work at the Capital Avenue and Broadwell Avenue intersection.
- 7) Replacement of a sanitary sewer service along the utility ditch for 1624 St. Paul Road. *SJ Louis has split the cost of this work.*
- 8) Relocation of an existing water service along Indiana Avenue for 597 E. 19th Street.
- 9) Additional work required to provide power to the relocated Veteran's Hospital sign

This change order will result in a contract increase of \$171,544.13, for an adjusted contract amount of \$21,456,967.64.

Alternatives

It appears that the Council has the following alternatives concerning the issue at hand. The Council may:

1. Move to approve
2. Refer the issue to a Committee
3. Postpone the issue to future date
4. Take no action on the issue

Recommendation

City Administration recommends that the Council approve Change Order No. 5 with S.J. Louis Construction, Inc. of Rockville, Minnesota, for North Interceptor Phase II, Project 2013-S-4.

Sample Motion

Move to approve the resolution.

**CITY OF GRAND ISLAND, NEBRASKA
NORTH INTERCEPTOR – PHASE 2**

**CITY PROJECT 2013-S-4
BLACK & VEATCH PROJECT NO. 175144
OLSSON ASSOCIATES PROJECT NO. 011-2347**

CHANGE ORDER NO. 5

Change Order No. 5 covers items CO5-1 through CO5-9. This change order covers costs associated with a dewatering reroute near Webb Road, additional work associated with an 8” sanitary sewer line extension as part of a new tap district (District No. 537T), additional storm sewer work in St. Paul Road, changing a new sanitary sewer manhole in St. Paul Road from a standard manhole to a drop manhole, additional storm sewer removal and replacement work near the BNSF Railroad, additional storm sewer work in the Capital Avenue and Broadwell Avenue intersection, a damaged sanitary sewer service along St. Paul Road, additional work required to provide power to the relocated Veteran’s Hospital sign, and the relocation of an existing water service.

Item CO5-1. Dewatering Reroute Near Webb Road (Bid Section C)

Initiated by: Owner

In order to minimize any negative impacts to the Contractor completing the Capital Avenue Widening project, the dewatering discharge for areas west of Webb Road needed to be rerouted to the north along Webb Road (west of the Veteran’s Home Cemetery) as opposed to sending the water east along Capital Avenue as described in the Contract Documents. This reroute required additional pumping and piping rental in addition to fuel costs for the pump.

Attachment 1 includes an itemized breakdown of the costs.

Item CO5-2. Additional Work Associated with 8” Sanitary Sewer Line Installation for New Tap District (District No. 537T) East of St. Paul Road (Bid Section A)

Initiated by: Owner

A new 8-inch sewer line was installed parallel to the new North Interceptor along the drainage ditch east of St. Paul Road as part of a new tap district to serve residents currently on septic service. This change order item includes the costs associated with that work that is not covered under previously established bid items.

Attachment 2 includes drawings of the new sewer line in addition to an itemized breakdown of these additional costs.

12/22/2015

CO5-1

Item CO5-3. Additional Storm Sewer Work in St. Paul Road (Bid Section A)

Initiated by: Contractor

In order to facilitate the open-cut installation of the North Interceptor through the intersection of St. Paul Road, a 20 foot long section of existing 84" CMP pipe needed to be removed and reset. This existing 84" CMP was in poor condition, so this change order item accounts for the material cost to replace 20 LF of 84" CMP pipe.

The linear foot price for the 84" CMP is \$200.

Item CO5-4. Change New 96-inch Diameter Manhole from a Standard Manhole to a Drop Manhole (Bid Section A)

Initiated by: Contractor

In order to construct the sanitary sewer improvements for Bid Section E, the 96-inch diameter manhole on the 48-inch North Interceptor located in St. Paul Road (MH-13A) needed to be a drop manhole in lieu of a standard manhole.

The change order item establishes the unit price for a 96-inch diameter drop manhole which is \$34,500.

Item CO5-5. Additional Storm Sewer Removal and Replacement Near the BNSF Railroad and Outfall Ditch (Bid Section A)

Initiated by: Contractor

During construction of the North Interceptor near the BNSF Railroad and the Outfall Ditch, an existing 24-inch RCP storm sewer pipe needed to be removed and replaced to facilitate the installation of the interceptor pipe.

Attachment 3 includes an itemized breakdown of these costs.

Item CO5-6. Additional Storm Sewer Work in the Capital Ave. and Broadwell Ave. Intersection (Bid Section A)

Initiated by: Contractor

In order to facilitate the open-cut installation of the North Interceptor through the intersection of Capital Ave. and Broadwell Ave., several modifications to the existing storm sewer system were necessary. The storm sewer modifications include a combination of new storm sewer pipe and new concrete structures. The majority of these items have already been covered in Change Order No. 4 (CO4-4), but this change order item contains the final remaining items that were not previously covered.

Attachment 4 includes an itemized breakdown of these costs.

12/28/2015

CO5-2

Item CO5-7. Damaged Sanitary Sewer Service at 1624 St. Paul Road (Bid Section A)

Initiated by: Contractor/Owner

During the installation of the North Interceptor along the Outfall Ditch just west of St. Paul Road, an existing unlocated clay sewer pipe was hit and damaged by the Contractor. As a result of this damage, one resident (1624 St. Paul Road) suffered a sewer backup in their basement and needed to have a new sanitary sewer service installed.

It was agreed that the City and the Contractor would split the costs of the cleanup and new sanitary sewer service, so this change order item includes the Contractor's portion of those costs (50% of the total).

Attachment 5 includes an itemized breakdown for these costs.

Item CO5-8. Provide Power to the Relocated Veteran's Hospital Sign (Bid Section A)

Initiated by: Contractor

The existing Veteran's Hospital sign needed to be relocated due to the change from a trenchless installation to an open-cut installation through the intersection of Capital Avenue and Broadwell Avenue. As a result of relocating the sign, a new power drop was needed to provide power to the sign. This change order item all costs associated with relocating and providing power to the sign.

Attachment 6 includes an itemized breakdown for these costs.

Item CO5-9. Relocate Existing Water Service Due to Proximity to Sanitary Manhole (Bid Section E)

Initiated by: Contractor

An existing active water service was discovered to be within 10 feet of the proposed sanitary sewer manhole at the intersection of 18th Street and Indiana Avenue. Utility Department requirements are that all water lines and water services are to be a minimum of 10 feet horizontally from any sanitary sewer or storm sewer structure. As a result of this, the existing water service needs to be relocated to the north to achieve the minimum 10 feet horizontal separation. This change order item includes all costs associated with relocating of the existing water service.

Attachment 7 includes an itemized breakdown for these costs.

**CITY OF GRAND ISLAND, NEBRASKA
NORTH INTERCEPTOR – PHASE 2**

**CITY PROJECT 2013-S-4
BLACK & VEATCH PROJECT NO. 175144
OLSSON ASSOCIATES PROJECT NO. 011-2347**

SUMMARY

CHANGE ORDER NO. 5

The Contract Price shall be modified as follows as a result of the changes described by this modification request. Additions to the Contract Price are indicated by a “+” in front of the amount, deductions by a “-”.

<u>Effect on Contract Price</u>		Increase/Decrease In Contract Price (+/-)
<u>Item</u>	<u>Description</u>	
CO5-1	Dewatering Reroute Near Webb Road (Bid Section C)	+\$64,223.25
CO5-2	Additional Work Associated with 8” Sanitary Sewer Line Installation for New Tap District East of St. Paul Road (Bid Section A)	+\$43,191.08
CO5-3	Additional Storm Sewer Work in St. Paul Road (Bid Section A)	+\$4,000.00
CO5-4	Change New 96-inch Diameter Manhole from a Standard Manhole to a Drop Manhole (Bid Section A)	+\$34,500.00
CO5-5	Additional Storm Sewer Removal and Replacement Near the BNSF Railroad and Outfall Ditch (Bid Section A)	+\$6,143.20
CO5-6	Additional Storm Sewer Work in the Capital Ave. and Broadwell Ave. Intersection (Bid Section A)	+\$16,050.27
CO5-7	Damaged Sanitary Sewer Service at 1624 St. Paul Road (Bid Section A)	-\$8,003.95
CO5-8	Provide Power to the Relocated Veteran’s Hospital Sign (Bid Section A)	+\$7,851.38
CO5-9	Relocate Existing Water Service Due to Proximity to Sanitary Manhole (Bid Section E)	+\$3,588.90

12/23/2015

CO5-4

Effect on Contract Price

Increase/Decrease
In Contract
Price
(+/-)

ItemDescription

NET CHANGE IN CONTRACT PRICE	+\$171,544.13
BID AMOUNT OF ORIGINAL CONTRACT	\$21,479,537.50
PREVIOUS CHANGE ORDER ADJUSTMENTS	<u>-\$194,113.99</u>
CURRENT CONTRACT AMOUNT	\$21,285,423.51
CHANGE ORDER NO. 5	+\$171,544.13
ADJUSTED CONTRACT AMOUNT	\$21,456,967.64

Effect on Contract Time

--	Substantial Completion for Original Contract (Bid Section B)	April 15, 2015
--	Final Completion for Original Contract (Bid Section B)	April 15, 2015
--	Substantial Completion for Original Contract (Bid Sections A-C)	June 1, 2016
--	Final Completion for Original Contract (Bid Sections A-C)	June 30, 2016
--	Substantial Completion for Original Contract (Bid Sections D-I)	June 1, 2017
--	Final Completion for Original Contract (Bid Sections D-I)	June 30, 2017
CO5-1	No additional time given for Contract	
CO5-2	Contract Time Extension for Substantial Completion for Original Contract (Bid Sections A-C), Calendar Days (Date)	12 (June 24, 2016)
CO5-2	Contract Time Extension for Final Completion for Original Contract (Bid Sections A-C), Calendar Days (Date)	12 (July 23, 2016)
CO5-3	No additional time given for Contract	
CO5-4	No additional time given for Contract	
CO5-5	No additional time given for Contract	
CO5-6	No additional time given for Contract	
CO5-7	No additional time given for Contract	
CO5-8	No additional time given for Contract	
CO5-9	No additional time given for Contract	

No additional claims shall be made for changes in Contract Time arising from these work items.

12/23/2015

CO5-5

This change order includes all costs, direct, indirect, and consequential, and all changes in Contract Time arising from the work included in the items for Change Order No. 5. No additional claims shall be made for changes in Contract Price or Contract Time arising from these work items.

All other provisions of the contract remain unchanged.

Agreed to this _____ day of _____, 2016

Recommended:
Black & Veatch Corporation

Approved:
City of Grand Island

By: _____

By: _____

Date: _____

Date: _____

Approved:
S.J. Louis Construction, Inc.

By: _____

Date: _____

Approved as to Form _____ City Attorney
--

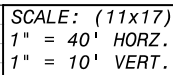
ATTACHMENT 1
ITEM CO5-1
DEWATERING REROUTE NEAR WEBB ROAD (BID
SECTION C)
ITEMIZED COST BREAKDOWN

	Item Description	Quantity	Unit	Unit Cost	Total Cost
	DEWATERING MATERIALS COST				
	Dewatering Materials Shipping	1	LS	\$1,100.00	\$1,100.00
	Dewatering Installation	1	LS	\$5,700.00	\$5,700.00
	Dewatering Materials Rental	2	MO	\$16,202.90	\$32,405.80
	Dewatering Materials Rental (Partial Month)	1	MO	\$10,801.94	\$10,801.94
	SJ Louis Markup	5	%	\$2,500.39	\$2,500.39
	Subtotal				\$52,508.13
	FUEL INVOICES				
	Pump Refuel, 7/27/2015	285	GAL	\$1.85	\$527.25
	Pump Refuel, 7/29/2015	285	GAL	\$1.85	\$527.25
	Pump Refuel, 7/31/2015	285	GAL	\$1.85	\$527.25
	Pump Refuel, 8/3/2015	256	GAL	\$1.84	\$472.09
	Pump Refuel, 8/7/2015	413	GAL	\$1.83	\$757.48
	Pump Refuel, 8/12/2015	145	GAL	\$1.88	\$273.19
	Pump Refuel, 8/14/2015	203	GAL	\$1.88	\$382.47
	Pump Refuel, 8/17/2015	300	GAL	\$1.88	\$565.23
	Pump Refuel, 8/19/2015	200	GAL	\$1.87	\$374.82
	Pump Refuel, 8/21/2015	119	GAL	\$1.80	\$214.69
	Pump Refuel, 8/27/2015	444	GAL	\$1.78	\$792.14
	Pump Refuel, 8/31/2015	317	GAL	\$1.98	\$628.96
	Pump Refuel, 9/3/2015	406	GAL	\$1.92	\$781.18
	Pump Refuel, 9/8/2015	330	GAL	\$1.88	\$621.75
	Pump Refuel, 9/10/2015	90	GAL	\$1.85	\$166.87
	Pump Refuel, 9/14/2015	304	GAL	\$1.83	\$557.57
	Pump Refuel, 9/17/2015	206	GAL	\$1.81	\$373.70
	Pump Refuel, 9/21/2015	461	GAL	\$1.78	\$822.47
	Pump Refuel, 9/24/2015	81	GAL	\$1.78	\$144.51
	Pump Refuel, 9/28/2015	379	GAL	\$1.78	\$676.17
	SJ Louis Markup	15	%	\$1,528.06	\$1,528.06
	Subtotal				\$11,715.12
	Total				\$64,223.25

ATTACHMENT 2
ITEM CO5-2
ADDITIONAL WORK ASSOCIATED WITH 8”
SANITARY SEWER LINE INSTALLATION FOR NEW
TAP DISTRICT EAST OF ST. PAUL ROAD (BID
SECTION A)

ITEMIZED COST BREAKDOWN
PLAN & PROFILE DRAWINGS

	Item Description	Quantity	Unit	Unit Cost	Total Cost
CO5-2A	4-in Sanitary Sewer Service	104	LF	\$70.00	\$7,280.00
CO5-2B	Sanitary Sewer Service Connection	13	EA	\$1,000.00	\$13,000.00
CO5-2C	Tree Removal	1	LS	\$6,825.00	\$6,825.00
CO5-2D	Remove and Replace Wire Fence	794	LF	\$6.00	\$4,764.00
CO5-2E	Remove and Replace Wood Fence	126	LF	\$21.53	\$2,712.78
CO5-2F	Remove Playground	1	LS	\$500.00	\$500.00
CO5-2G	Removal of Miscellaneous Items	1	LS	\$500.00	\$500.00
CO5-2H	Mobilization	1	LS	\$7,609.30	\$7,609.30
				Total	\$43,191.08



GRAND ISLAND, NEBRASKA
NORTH INTERCEPT

PHASE 2

SANITARY PLAN & PROFILE
8" SEWER EXTENSION
STA 100+00 TO STA 102+50

DESI GNED:	JB
DETAI LED:	BF / CM
CHECKED:	MY
APPROVED:	JB
DATE:	5/30/2014

PROJECT NO.

B&V: 175144

0A: 011-2347

PP-A29

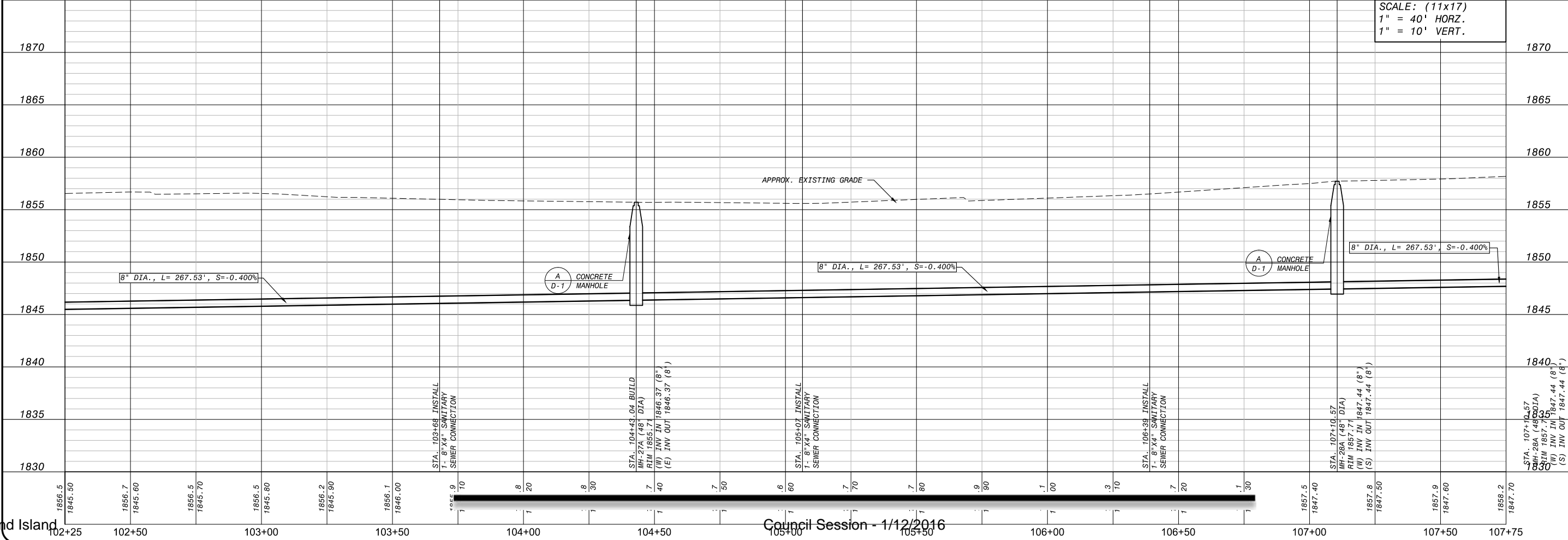
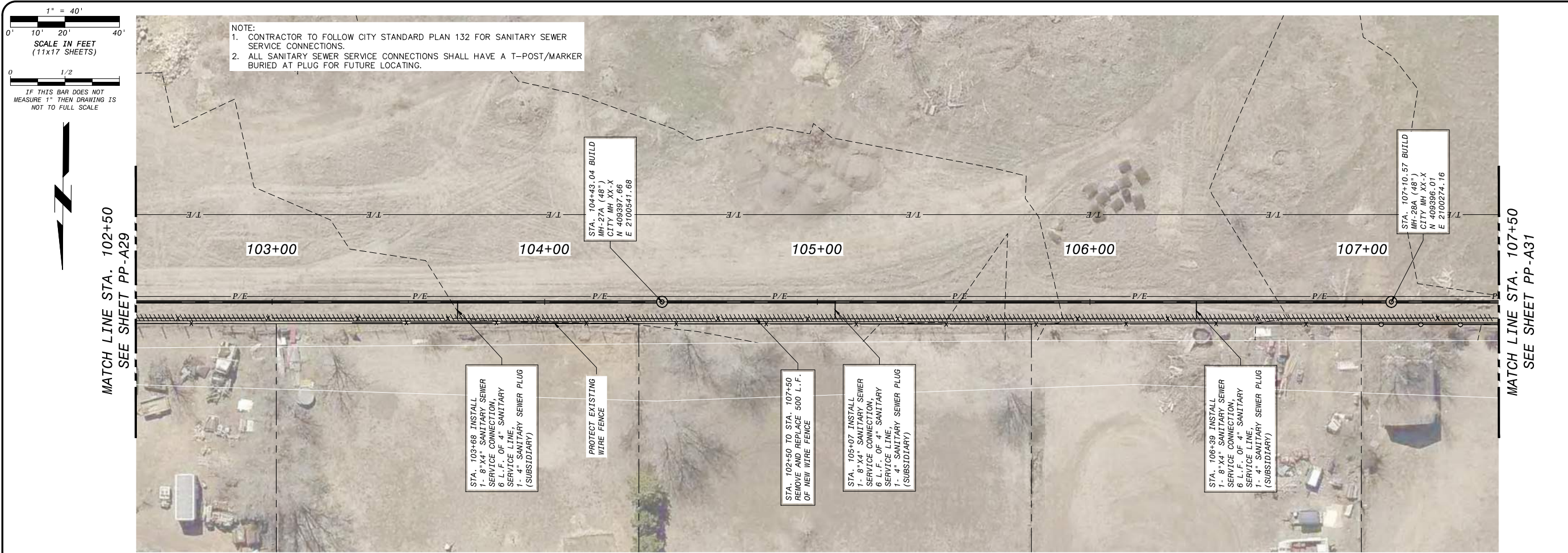
SHEET
35A OF 250

DATE	REVISIONS AND RECORD OF ISSUE	NO.	BY	CK	APPROV.
11/23/47	SEWER EXTENSION.DWG				
	XREF#2:				
	SAVED: 7/31/2015 1:14:47 PM				
	XREF#3:				
	PLOTTED: 8/26/2015 6:36:28 AM				
	XREF#4:				

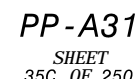
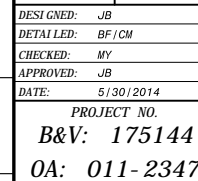
BLACK & VEATCH
Building a world of difference

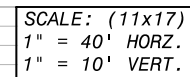
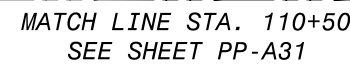
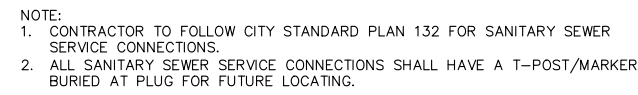
Veatch Corporation

OLSSON ASSOCIATES



BLACK & VEATCH Building a world of infrastructure		COLLSON ASSOCIATES	
GRAND ISLAND, NEBRASKA NORTH INTERCEPTOR PHASE 2			
SANITARY PLAN & PROFILE 8" SEWER EXTENSION STA 102+50 TO STA 107+50			
DESIGNED: JB		PROJECT NO. B&V: 175144	
DETAILED: BF/CM		OA: 011-2347	
CHECKED: MY			
APPROVED: JB			
DATE: 5/30/2014			
NO. BY CK APP			
DATE		REVISIONS AND RECORD OF ISSUE	
		XREF1: BORDER.dwg	
		XREF2:	
		XREF3:	
		XREF4:	
		XREF5:	





GRAND ISLAND, NEBRASKA
NORTH INTERCEPT
PHASE 2

SANITARY PLAN & PROFILE
8" SEWER EXTENSION
STA 110+50 TO STA 112+69

DESIGNED:	JB
DETAILS:	BF / CM
CHECKED:	MY
APPROVED:	JB
DATE:	5/30/2014
PROJECT NO.	
B&V: 175144	
OA: 011-2347	

PP-A32
SHEET P
350 OF 250

	DATE	REVISIONS AND RECORD OF ISSUE	NO.	BY	CHK APP
		XREF1: BORDER.dwg			
		XREF2:			
		XREF3:			
		XREF4:			
		XREF5:			
		XREF6:			
		XREF7:			
		XREF8:			
		XREF9:			
		XREF10:			
		XREF11:			
		XREF12:			
		XREF13:			
		XREF14:			
		XREF15:			
		XREF16:			
		XREF17:			
		XREF18:			
		XREF19:			
		XREF20:			
		XREF21:			
		XREF22:			
		XREF23:			
		XREF24:			
		XREF25:			
		XREF26:			
		XREF27:			
		XREF28:			
		XREF29:			
		XREF30:			
		XREF31:			
		XREF32:			
		XREF33:			
		XREF34:			
		XREF35:			
		XREF36:			
		XREF37:			
		XREF38:			
		XREF39:			
		XREF40:			
		XREF41:			
		XREF42:			
		XREF43:			
		XREF44:			
		XREF45:			
		XREF46:			
		XREF47:			
		XREF48:			
		XREF49:			
		XREF50:			
		XREF51:			
		XREF52:			
		XREF53:			
		XREF54:			
		XREF55:			
		XREF56:			
		XREF57:			
		XREF58:			
		XREF59:			
		XREF60:			
		XREF61:			
		XREF62:			
		XREF63:			
		XREF64:			
		XREF65:			
		XREF66:			
		XREF67:			
		XREF68:			
		XREF69:			
		XREF70:			
		XREF71:			
		XREF72:			
		XREF73:			
		XREF74:			
		XREF75:			
		XREF76:			
		XREF77:			
		XREF78:			
		XREF79:			
		XREF80:			
		XREF81:			
		XREF82:			
		XREF83:			
		XREF84:			
		XREF85:			
		XREF86:			
		XREF87:			
		XREF88:			
		XREF89:			
		XREF90:			
		XREF91:			
		XREF92:			
		XREF93:			
		XREF94:			
		XREF95:			
		XREF96:			
		XREF97:			
		XREF98:			
		XREF99:			
		XREF100:			
		XREF101:			
		XREF102:			
		XREF103:			
		XREF104:			
		XREF105:			
		XREF106:			
		XREF107:			
		XREF108:			
		XREF109:			
		XREF110:			
		XREF111:			
		XREF112:			
		XREF113:			
		XREF114:			
		XREF115:			
		XREF116:			
		XREF117:			
		XREF118:			
		XREF119:			
		XREF120:			
		XREF121:			
		XREF122:			
		XREF123:			
		XREF124:			
		XREF125:			
		XREF126:			
		XREF127:			
		XREF128:			
		XREF129:			
		XREF130:			
		XREF131:			
		XREF132:			
		XREF133:			
		XREF134:			
		XREF135:			
		XREF136:			
		XREF137:			
		XREF138:			
		XREF139:			
		XREF140:			
		XREF141:			
		XREF142:			
		XREF143:			
		XREF144:			
		XREF145:			
		XREF146:			
		XREF147:			
		XREF148:			
		XREF149:			
		XREF150:			
		XREF151:			
		XREF152:			
		XREF153:			
		XREF154:			
		XREF155:			
		XREF156:			
		XREF157:			
		XREF158:			
		XREF159:			
		XREF160:			
		XREF161:			
		XREF162:			
		XREF163:			
		XREF164:			
		XREF165:			
		XREF166:			
		XREF167:			
		XREF168:			
		XREF169:			
		XREF170:			
		XREF171:			
		XREF172:			
		XREF173:			
		XREF174:			
		XREF175:			
		XREF176:			
		XREF177:			
		XREF178:			
		XREF179:			
		XREF180:			
		XREF181:			
		XREF182:			
		XREF183:			
		XREF184:			
		XREF185:			
		XREF186:			
		XREF187:			
		XREF188:			
		XREF189:			
		XREF190:			
		XREF191:			
		XREF192:			
		XREF193:			
		XREF194:			
		XREF195:			
		XREF196:			
		XREF197:			
		XREF198:			
		XREF199:			
		XREF200:			
		XREF201:			
		XREF202:			
		XREF203:			
		XREF204:			
		XREF205:			
		XREF206:			
		XREF207:			
		XREF208:			
		XREF209:			
		XREF210:			
		XREF211:			
		XREF212:			
		XREF213:			
		XREF214:			
		XREF215:			
		XREF216:			
		XREF217:			
		XREF218:			
		XREF219:			
		XREF220:			
		XREF221:			
		XREF222:			
		XREF223:			
		XREF224:			
		XREF225:			
		XREF226:			
		XREF227:			
		XREF228:			
		XREF229:			
		XREF230:			
		XREF231:			
		XREF232:			
		XREF233:			
		XREF234:			
		XREF235:			
		XREF236:			
		XREF237:			
		XREF238:			
		XREF239:			
		XREF240:			
		XREF241:			
		XREF242:			
		XREF243:			
		XREF244:			
		XREF245:			
		XREF246:			
		XREF247:			
		XREF248:			
		XREF249:			
		XREF250:			
		XREF251:			
		XREF252:			
		XREF253:			
		XREF254:			
		XREF255:			
		XREF256:			
		XREF257:			
		XREF258:			
		XREF259:			
		XREF260:			
		XREF261:			
		XREF262:			
		XREF263:			
		XREF264:			
		XREF265:			
		XREF266:			
		XREF267:			
		XREF268:			
		XREF269:			
		XREF270:			
		XREF271:			
		XREF272:			
		XREF273:			
		XREF274:			
		XREF275:			
		XREF276:			
		XREF277:			
		XREF278:			
		XREF279:			
		XREF280:			
		XREF281:			
		XREF282:			
		XREF283:			
		XREF284:			
		XREF285:			
		XREF286:			
		XREF287:			
		XREF288:			
		XREF289:			
		XREF290:			
		XREF291:			
		XREF292:			
		XREF293:			
		XREF294:			
		XREF295:			
		XREF296:			
		XREF297:			
		XREF298:			
		XREF299:			
		XREF300:			
		XREF301:			
		XREF302:			
		XREF303:			
		XREF304:			
		XREF305:			
		XREF306:			
		XREF307:			
		XREF308:			
		XREF309:			
		XREF310:			
		XREF311:			
		XREF312:			
		XREF313:			
		XREF314:			
		XREF315:			
		XREF316:			
		XREF317:			
		XREF318:			
		XREF319:			
		XREF320:			
		XREF321:			
		XREF322:			
		XREF323:			
		XREF324:			
		XREF325:			
		XREF326:			
		XREF327:			
		XREF328:			
		XREF329:			
		XREF330:			
		XREF331:			
		XREF332:			
		XREF333:			
		XREF334:			
		XREF335:			
		XREF336:			
		XREF337:			
		XREF338:			
		XREF339:			
		XREF340:			
		XREF341:			
		XREF342:			
		XREF343:			
		XREF344:			
		XREF345:			
		XREF346:			
		XREF347:			
		XREF348:			
		XREF349:			
		XREF350:			
		XREF351:			
		XREF352:			
		XREF353:			
		XREF354:			
		XREF355:			
		XREF356:			
		XREF357:			
		XREF358:			
		XREF359:			
		XREF360:			
		XREF361:			
		XREF362:			
		XREF363:			
		XREF364:			
		XREF365:			
		XREF366:			
		XREF367:			
		XREF368:			
		XREF369:			
		XREF370:			
		XREF371:			
		XREF372:			
		XREF373:			
		XREF374:			
		XREF375:			
		XREF376:			
		XREF377:			

ATTACHMENT 3
ITEM CO5-4
ADDITIONAL STORM SEWER REMOVAL AND
REPLACEMENT NEAR THE BNSF RAILROAD AND
OUTFALL DITCH (BID SECTION A)

ITEMIZED COST BREAKDOWN

	Item Description	Quantity	Unit	Unit Cost	Total Cost
CO5-4A	Remove 24" RCP Storm Sewer Pipe	56	LF	\$18.00	\$1,008.00
CO5-4B	Place 24" RCP Storm Sewer Pipe	56	LF	\$91.70	\$5,135.20
	Total				\$6,143.20

ATTACHMENT 4
ITEM CO5-5
ADDITIONAL STORM SEWER WORK IN THE
CAPITAL AVE. AND BROADWELL AVE.
INTERSECTION (BID SECTION A)

ITEMIZED COST BREAKDOWN

	Item Description	Quantity	Unit	Unit Cost	Total Cost
CO5-5A	Remove 48" RCP Storm Sewer	30	LF	\$33.60	\$1,008.00
CO5-5B	Place 48" RCP Storm Sewer	15	LF	\$199.50	\$2,992.50
CO5-5C	Remove 72" RCP Storm Sewer	36	LF	\$50.40	\$1,814.40
CO5-5D	Place 72" RCP Storm Sewer	18.33	LF	\$236.25	\$4,330.46
CO5-5E	Addition Shipping for 48" RCP	1	LS	\$892.50	\$892.50
CO5-5F	Rock Bedding	113.66	TON	\$44.10	\$5,012.41
	Total				\$16,050.27

ATTACHMENT 5
ITEM CO5-7
DAMAGED SANITARY SEWER SERVICE AT 1624 ST.
PAUL ROAD (BID SECTION A)

ITEMIZED COST BREAKDOWN

	Item Description	Quantity	Unit	Unit Cost	Total Cost	SJ Louis' Portion (50%)
CO5-7A	Homeowner's Cleaning Fee	1	LS	\$1,082.90	\$1,082.90	\$541.45
CO5-7B	Sanitary Service Installation	1	LS	\$14,925.00	\$14,925.00	\$7,462.50
	Total					\$8,003.95

ATTACHMENT 6
ITEM CO5-8
PROVIDE POWER TO THE RELOCATED VETERAN'S
HOSPITAL SIGN (BID SECTION A)

ITEMIZED COST BREAKDOWN

	Item Description	Quantity	Unit	Unit Cost	Total Cost
CO5-8A	Boring, Installation of Service Wire, Meter Pedestal	1	LS	\$7,477.50	\$7,477.50
CO5-8B	SJ Louis Markup	5	%	\$373.88	\$373.88
	Total				\$7,851.38

ATTACHMENT 7
ITEM CO5-9
RELOCATE EXISTING WATER SERVICE DUE TO
PROXIMITY TO SANITARY MANHOLE ROAD (BID
SECTION E)

ITEMIZED COST BREAKDOWN

	Item Description	Quantity	Unit	Unit Cost	Total Cost
CO5-9A	Relocate Existing Water Service	1	LS	\$3,418.00	\$3,418.00
CO5-9B	SJ Louis Markup	5	%	\$170.90	\$170.90
	Total				\$3,588.90

RESOLUTION 2016-7

WHEREAS, On September 9, 2014, by Resolution No. 2014-284, City Council awarded, Project 2013-S-4, North Interceptor Phase II to S.J. Louis Construction, Inc. of Rockville, Minnesota, in the amount of \$21,479,537.50; and

WHEREAS, on February 10, 2015, by Resolution No. 2015-39, City Council approved Change Order No. 1, which established new unit prices for installed storm and sanitary sewers which are embedded with native sand material in lieu of the imported granular embedment specified in the contract documents; and

WHEREAS, on March 24, 2015, by Resolution No. 2015-74, City Council approved Change Order No. 2, which changed the methodology of the trenchless crossing from micro tunneling to a direct jacked tunnel using a tunnel boring machine at both Broadwell Avenue/Capital Avenue and Webb Road/Northwest Crossings property at Capital Avenue and resulted in a deduction of \$210,003.48, for a revised contract amount of \$21,269,534.02; and

WHEREAS on June 23, 2015, by Resolution No. 2015-160, City Council approved Change Order No. 3, which addressed unknown and unplanned restraint at the existing 18" waterline that crosses Capital Avenue just east of Webb Road; additional storm sewer east of St. Paul Road as needed to fill in a portion of the utility ditch and provide access to the new manhole; and finalization of the As-Built quantities for Phase II (Part B) and resulted in an increase of \$56,540.88, for a revised contract amount of \$21,326,074.90; and

WHEREAS, on August 11, 2015, by Resolution No. 2015-214, City Council approved Change Order No. 4, which allowed for an open cut at the intersection of Capital Avenue and Broadwell Avenue for installation of the north interceptor, rerouting of the dewatering discharge, and several modifications to the existing storm sewer at this intersection and resulted in an overall contract decrease of \$40,651.39, for a revised contract amount of \$21,285,423.51; and

WHEREAS, Change Order No. 5 covers cost associated with a dewatering reroute near Webb Road, additional work associated with an 8" sanitary sewer line extension as part of a new tap district (District No. 537T), additional storm sewer work in St. Paul Road, changing a new sanitary sewer manhole in St. Paul Road from a standard manhole to a drop manhole, additional storm sewer removal and replacement work near the Burlington Northern Santa Fe Railroad, additional storm sewer work in the Capital Avenue and Broadwell Avenue intersection, a damaged sanitary sewer service along St. Paul Road, additional work required to provide power to the relocated Veteran's Hospital sign, and the relocation of an existing water service; and

WHEREAS, an overall net change of the contract amount will be an increase of \$171,544.13, which results in an adjusted contract amount of \$21,456,967.64.

NOW, THEREFORE, BE IT RESOLVED BY THE MAYOR AND COUNCIL OF THE CITY OF GRAND ISLAND, NEBRASKA, that authorization to proceed with Change Order No. 5 with S.J. Louis Construction, Inc. of Rockville, Minnesota is hereby approved; and

Approved as to Form	<input type="checkbox"/>	_____
September 10, 2013	<input type="checkbox"/>	City Attorney

BE IT FURTHER RESOLVED, that the Mayor is hereby authorized and directed to execute such Change Order No. 5, North Interceptor Phase II, Project 2013-S-4 on behalf of the City of Grand Island.

- - -

Adopted by the City Council of the City of Grand Island, Nebraska, January 12, 2016.

Jeremy L. Jensen, Mayor

Attest:

RaNae Edwards, City Clerk

- 2 -