



Hall County Regional Planning Commission

**Wednesday, October 5, 2016
Regular Meeting**

Item M6

Butler Third Subdivision

Staff Contact:

September 22, 2016

Dear Members of the Board:

RE: Final Plat – Butler Third Subdivision.

For reasons of Section 19-923 Revised Statutes of Nebraska, as amended, there is herewith submitted a final plat of Butler Subdivision, located in Hall County, Nebraska.

This final plat proposes to create 2 lots, on a tract of land comprising a part of the Southwest Quarter (SW1/4) and the Southeast Quarter (SE1/4), Section Thirty Two (32), Township Twelve (12) North, Range Nine (9) West of the 6th P.M. located in Hall County, Nebraska, said tract containing 19.256 acres.

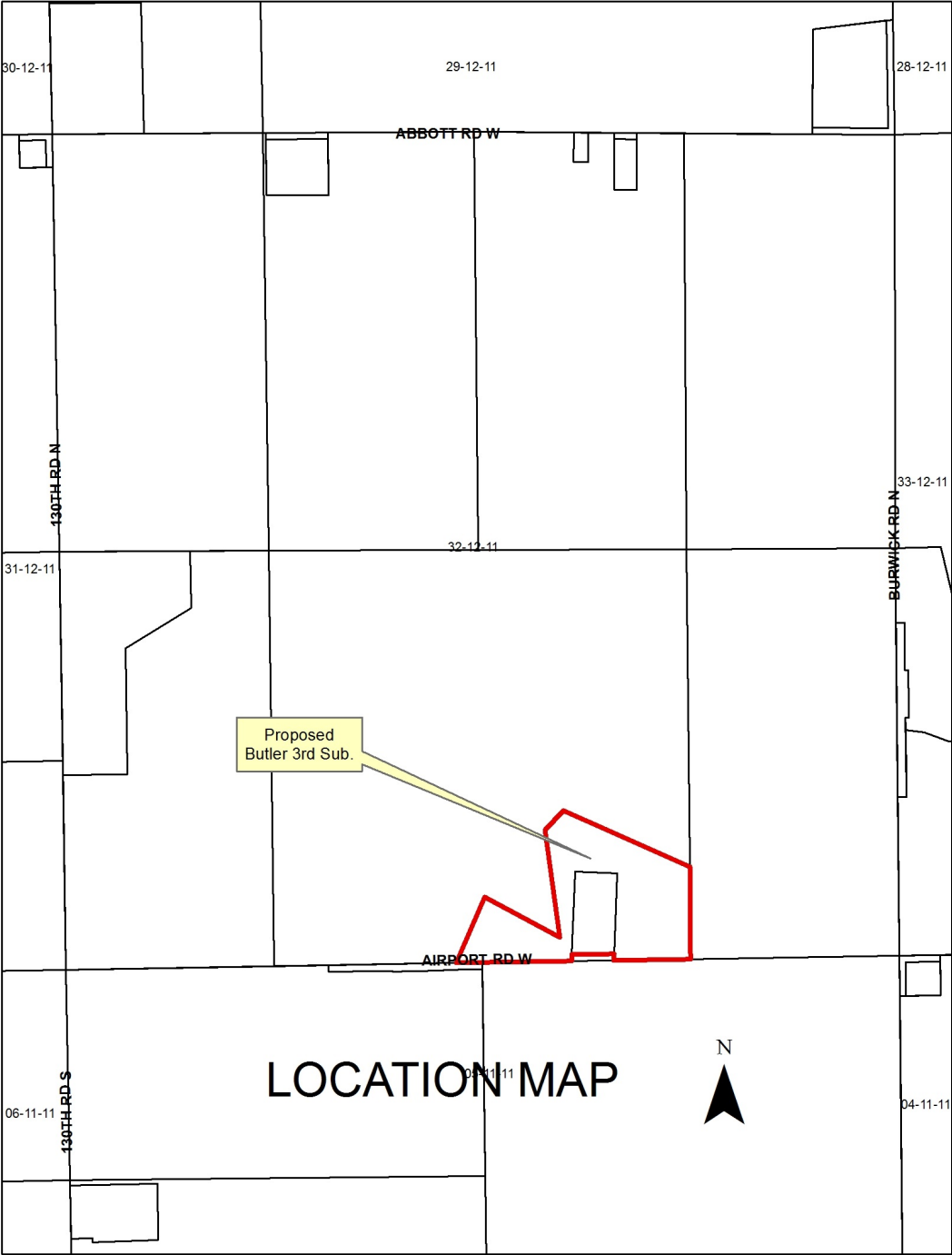
You are hereby notified that the Regional Planning Commission will consider this final plat at the next meeting that will be held at 6:00 p.m. on October 5, 2016 in the Council Chambers located in Grand Island's City Hall.

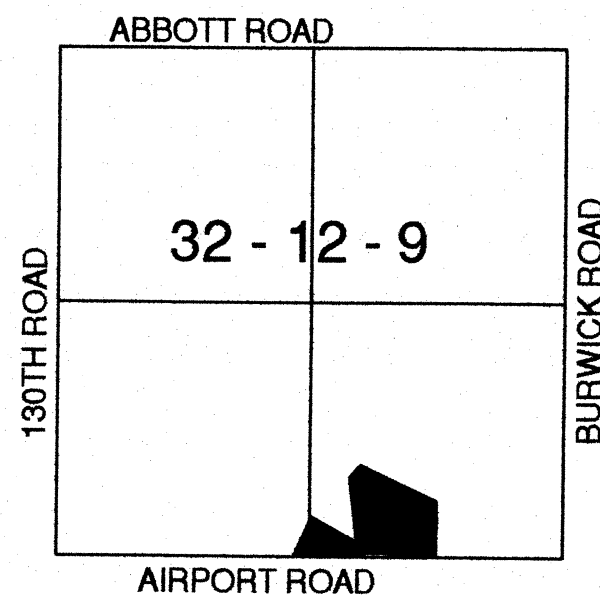
Sincerely,

Chad Nabity, AICP
Planning Director

Cc: County Clerk
County Attorney
County Zoning
County Public Works
Manager of Postal Operations
Benjamin Associates

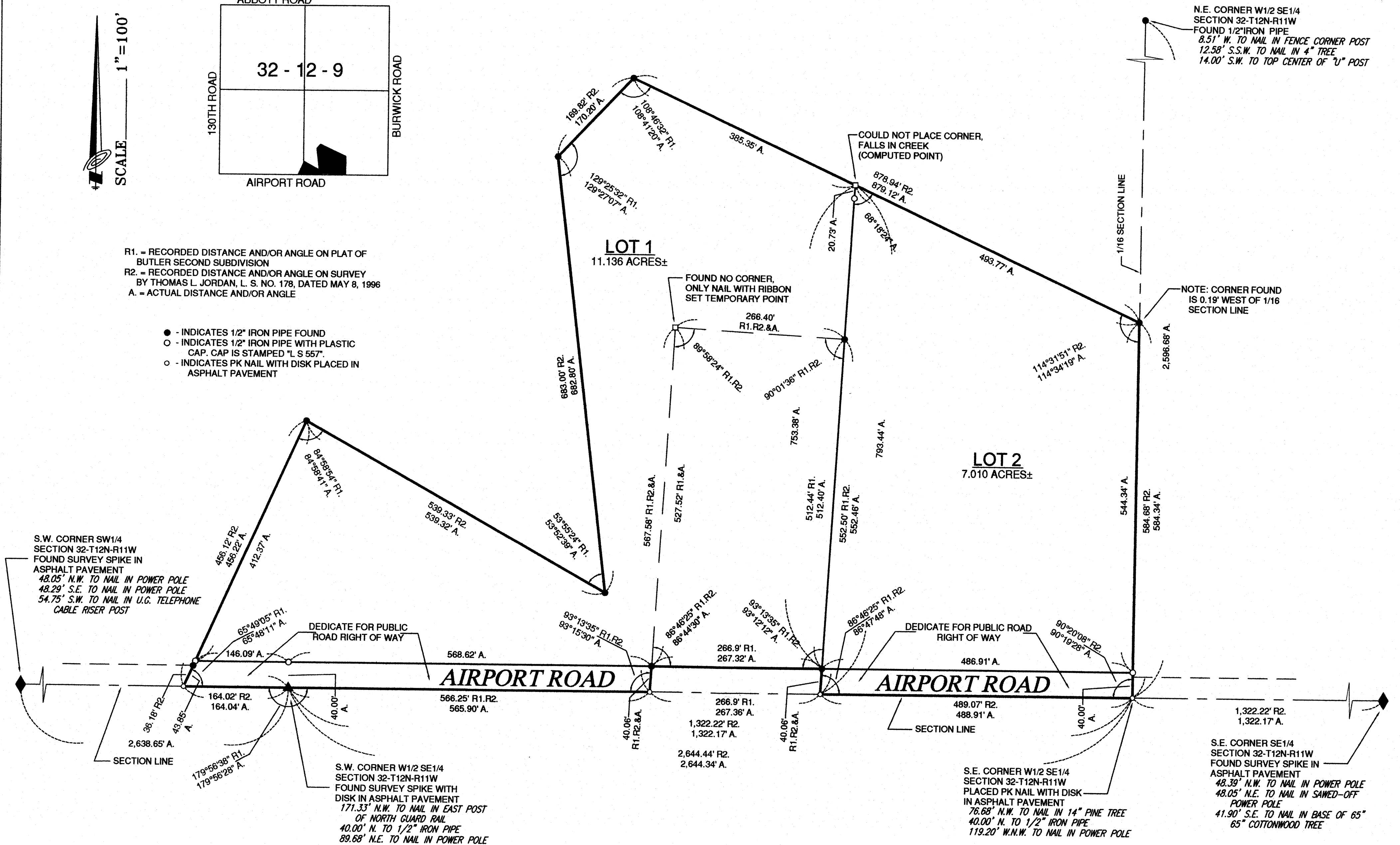
This letter was sent to the following School Districts 1R, 2, 3, 19, 82, 83, 100, 126.





R1. = RECORDED DISTANCE AND/OR ANGLE ON PLAT OF BUTLER SECOND SUBDIVISION
R2. = RECORDED DISTANCE AND/OR ANGLE ON SURVEY BY THOMAS L. JORDAN, L. S. NO. 178, DATED MAY 8, 1996
A. = ACTUAL DISTANCE AND/OR ANGLE

- - INDICATES 1/2" IRON PIPE FOUND
- - INDICATES 1/2" IRON PIPE WITH PLASTIC CAP. CAP IS STAMPED "L S 557".
- - INDICATES PK NAIL WITH DISK PLACED IN ASPHALT PAVEMENT



BUTLER THIRD SUBDIVISION

HALL COUNTY, NEBRASKA

BENJAMIN & ASSOCIATES, INC. - ENGINEERS & SURVEYORS - GRAND ISLAND, NEBRASKA