



# **Hall County Regional Planning Commission**

**Wednesday, August 10, 2016  
Regular Meeting**

## **Item J1**

### **Prairie Commons Subdivision**

**Staff Contact: Chad Nabity**

July 21, 2016

Dear Members of the Board:

**RE: Preliminary and Final Plat – Prairie Commons Subdivision.**

For reasons of Section 19-923 Revised Statutes of Nebraska, as amended, there is herewith submitted a preliminary and final plat of Prairie Commons Subdivision, located in Grand Island, in Hall County, Nebraska.

This preliminary plat proposes to create 20 lots, on a tract of land consisting of part of the Northeast Quarter (NE1/4) of Section 36, Township 11 North, Range 10 and the final plat proposes to create 10 lots, on a tract of land consisting of part of the Northeast Quarter (NE1/4) of Section 36, Township 11 North, Range 10 West of the 6<sup>th</sup> P.M., in the City of Grand Island, Hall County, Nebraska, said tract containing 95.32 acres.

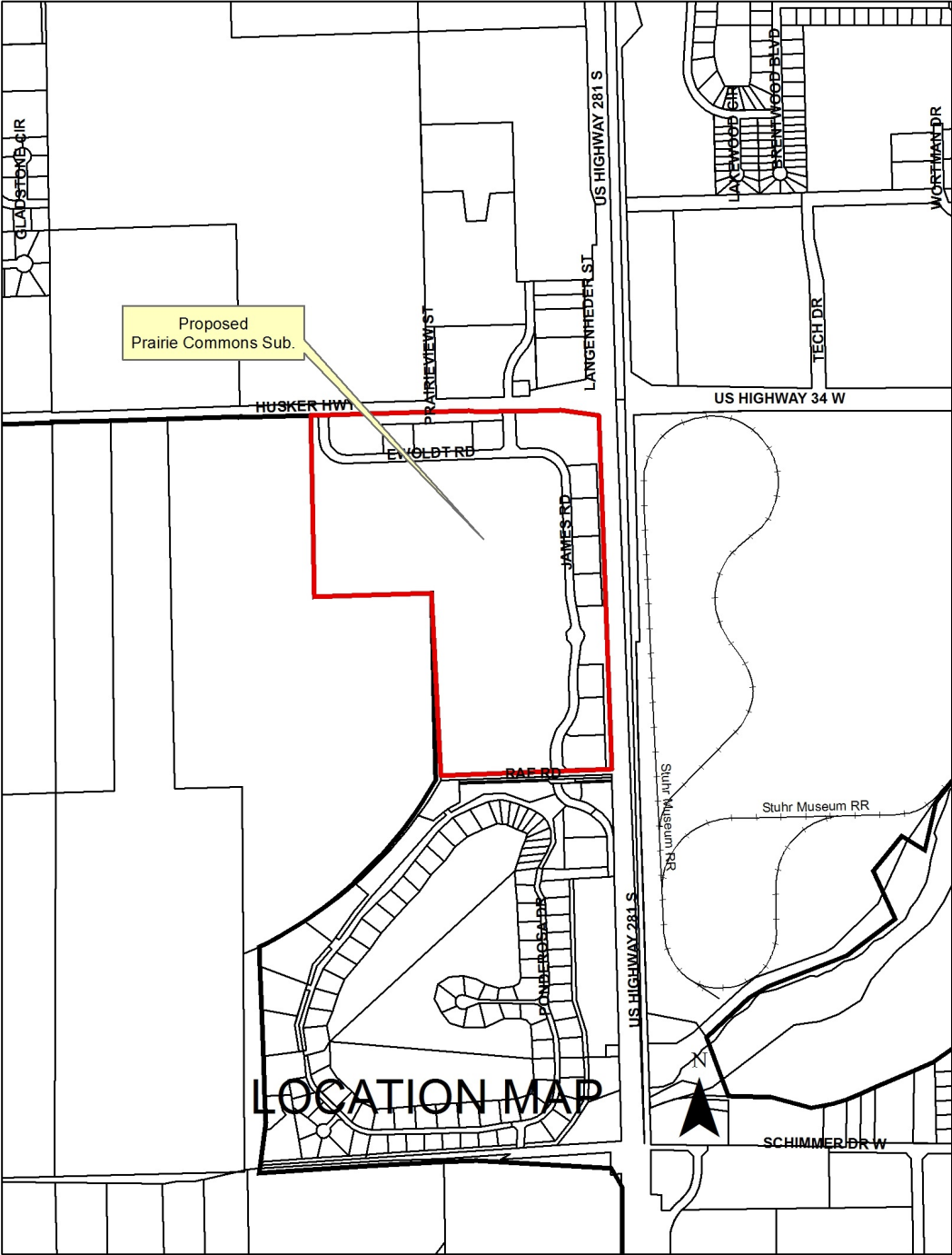
You are hereby notified that the Regional Planning Commission will consider this final plat at the next meeting that will be held at 6:00 p.m. on August 10, 2016 in the Council Chambers located in Grand Island's City Hall.

Sincerely,

Chad Nabity, AICP  
Planning Director

Cc: City Clerk  
City Attorney  
City Public Works  
City Utilities  
City Building Director  
Manager of Postal Operations  
Olsson Associates

This letter was sent to the following School Districts 1R, 2, 3, 19, 82, 83, 100, 126.



# PRAIRIE COMMONS SUBDIVISION

## GRAND ISLAND, HALL COUNTY, NEBRASKA

### FINAL PLAT

**MOLSSON**  
ASSOCIATES

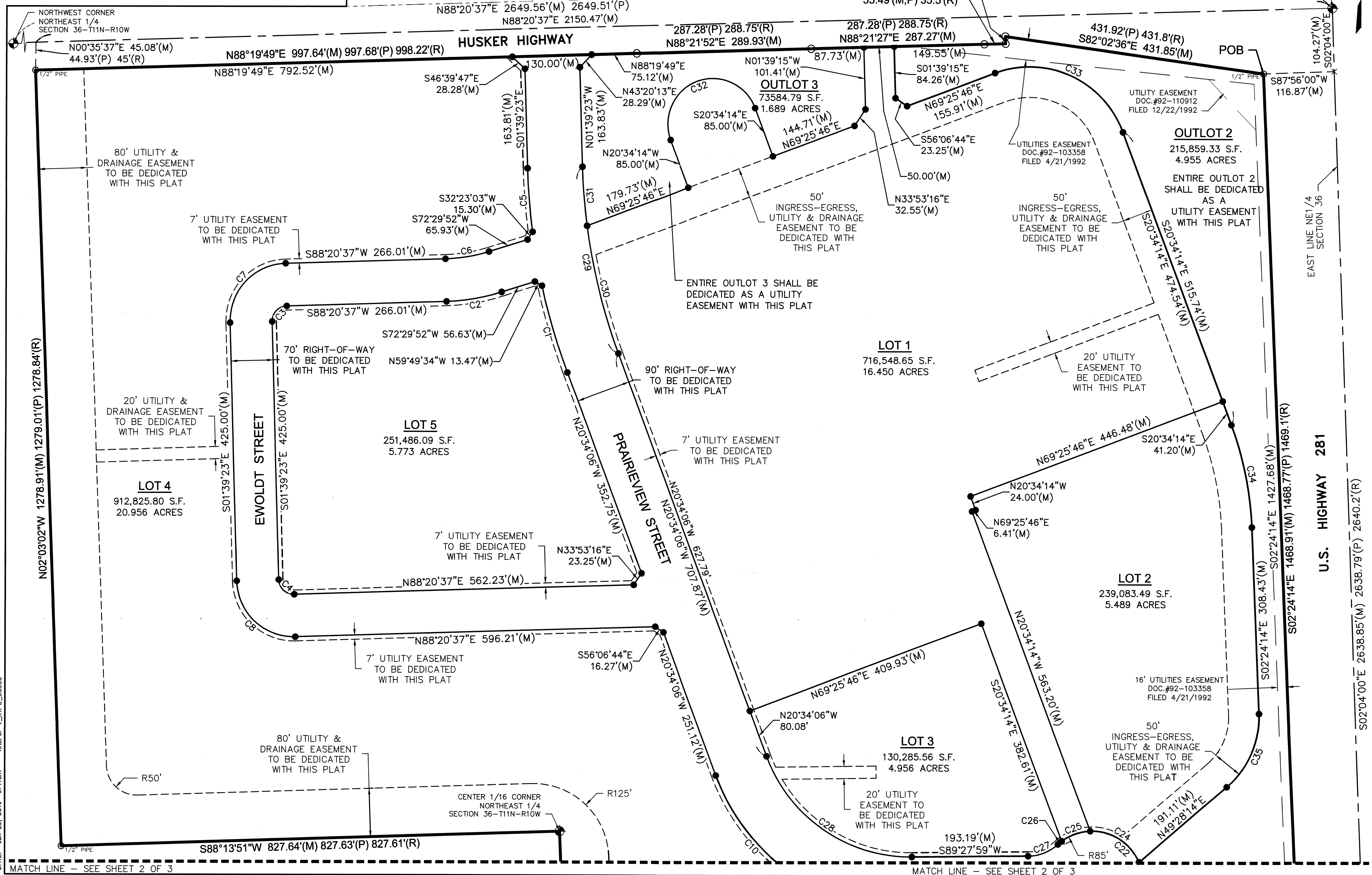
201 East 2nd Street  
P.O. Box 1072  
Grand Island, NE 68802-1072  
TEL 308.384.8750  
FAX 308.384.8752

PROJECT NO. 2016-1176  
PRATARIA VENTURES  
HWY 281 & HUSKER HWY  
FB: GI 2016-2

SHEET 1 OF 3

0' 50' 100' 200'  
SCALE IN FEET

NORTHEAST CORNER  
SECTION 36-T11N-R10W



DWG: F:\2016\1001-1500\016-1176\Design\Survey\SRV\Sheets\Sheet V\_FPT\_6176.dwg  
DATE: Jun 29, 2016 9:41am  
USER: jlmenez  
XREFS: V\_XPT0\_60906