



# Hall County Regional Planning Commission

Wednesday, November 02, 2011

Regular Session

## Item M6

### Watch Subdivision

*Insert a narrative here*

Staff Contact:

October 20, 2011

Dear Members of the Board:

**RE: Final Plat – Watch Subdivision**

For reasons of Section 19-923 Revised Statutes of Nebraska, as amended, there is herewith submitted a final plat of Watch Subdivision, in Hall County Nebraska.

This final plat proposes to create 1 lot on a tract of land located in part of the East Half E(1/2) of the Southwest Quarter (SW1/4) of Section Twenty-Four (24), Township Ten (10) North, Range Eleven (11) West of the Sixth P.M., in Hall County, Nebraska, said tract containing 9.652 acres.

You are hereby notified that the Regional Planning Commission will consider this final plat at the next meeting that will be held at 6:00 p.m. on November 2, 2011 in the Council Chambers located in Grand Island's City Hall.

Sincerely,

Chad Nabity, AICP  
Planning Director

Cc: Hall County Clerk  
Hall County Attorney  
Hall County Public Works  
Hall County Zoning Department  
Manager of Postal Operations  
Olsson Associates

This letter was sent to the following School Districts 1R, 2, 3, 8, 12, 19, 82, 83, 100, 126.



# LOCATION MAP

# WATCH SUBDIVISION

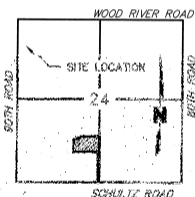
## HALL COUNTY, NEBRASKA

### FINAL PLAT

NORTH QUARTER (N1/4) CORNER  
 SECTION 24, TOWNSHIP 10 NORTH, RANGE 11 WEST

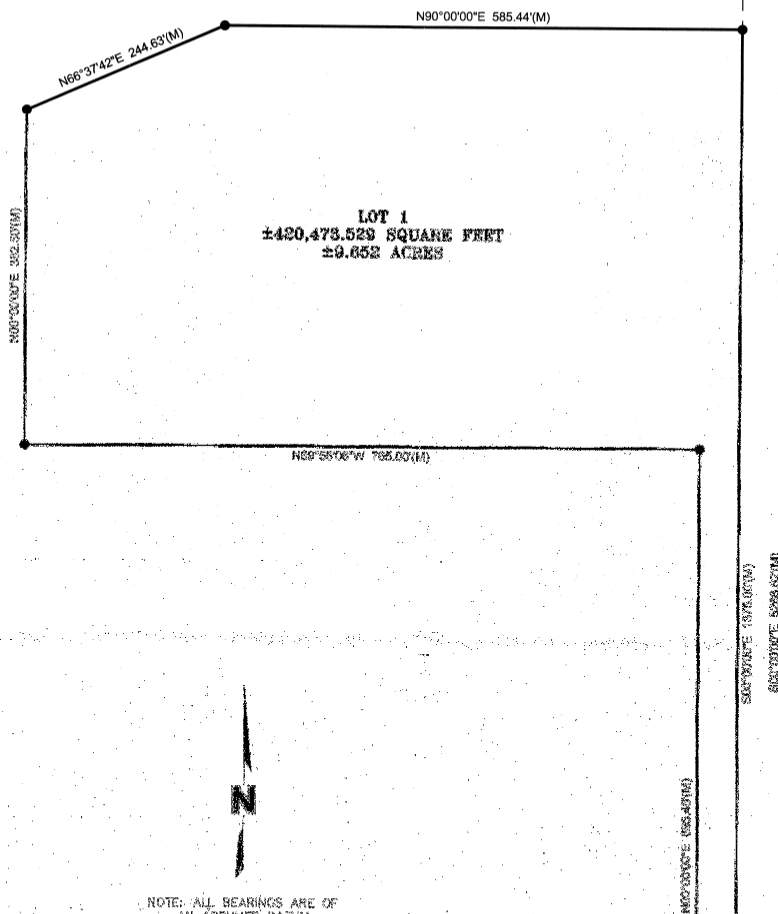
#### LOCATION MAP

SECTION 24, TOWNSHIP 10 NORTH, RANGE 11 WEST  
 NOT TO SCALE



#### LEGEND

- SECTION CORNER
- SET 5/8" x 24" REBAR WITH L.S. 8074 CAP
- SET SURVEY SPIKE WITH WASHER
- SECTION LINE
- PROPERTY LINE
- RIGHT-OF-WAY LINE
- MEASURED DISTANCE
- RECORDED DISTANCE



#### SECTION TIES

NORTH QUARTER (N1/4) CORNER, SECTION 24, TOWNSHIP 10 NORTH, RANGE 11 WEST  
 FOUND 5/8\" x 24\" REBAR CAP, 20.7' BELOW GRAVEL ROAD.

NW 43.09' TO NAIL IN GATE POST  
 NE 47.14' TO MAG NAIL IN FENCE POST  
 SE 47.43' TO NAIL IN RAILROAD TIE  
 S 32.89' TO FACE OF WITNESS CORNER

SOUTH QUARTER (S1/4) CORNER, SECTION 24, TOWNSHIP 10 NORTH, RANGE 11 WEST  
 FOUND ALUMINUM CAP, FLUSH WITH ASPHALT ROAD.

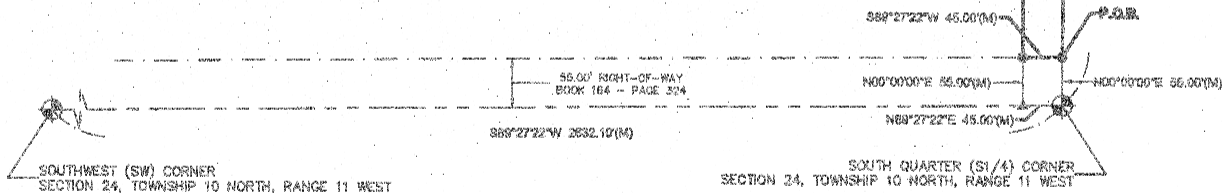
N 57.09' TO NAIL IN POWER POLE  
 SE 54.42' TO NAIL IN POWER POLE  
 S 53.38' TO NAIL IN CORNER FENCE POST  
 W 45.00' TO SPIKE WITH WASHER

SOUTHWEST (SW) CORNER, SECTION 24, TOWNSHIP 10 NORTH, RANGE 11 WEST  
 FOUND ALUMINUM CAP, FLUSH WITH ASPHALT ROAD.

NW 64.03' TO NAIL IN CORNER FENCE POST  
 NE 59.76' TO NAIL IN POWER POLE  
 SE 53.29' TO FACE OF WITNESS CORNER  
 SW 67.37' TO MAG NAIL IN POWER POLE

NOTE: ALL BEARINGS ARE OF  
 AN ASSUMED DATUM

SCALE IN FEET



SHEET 1 OF 2

OWNERS: ADRIANE JAMIE WATCH & JERRY LEE CATCH-WATCH, WIFE AND HUSBAND  
 SUBDIVIDER: ADRIANE JAMIE WATCH & JERRY LEE CATCH-WATCH, WIFE AND HUSBAND  
 SURVEYOR: OLSSON ASSOCIATES  
 ENGINEER: OLSSON ASSOCIATES  
 NUMBER OF LOTS: 1

**OLSSON**  
 ASSOCIATES

201 East 2nd Street  
 P.O. Box 1072  
 Grand Island, NE 68802-1072  
 TEL 308.384.8750  
 FAX 308.384.8752

PROJECT NUMBER: 011-2274  
 ADRIANE JAMIE WATCH  
 HALL COUNTY SURVEY  
 FIELD BOOK: GRAND ISLAND 2011 #2