



# Hall County Regional Planning Commission

Wednesday, October 05, 2011  
Regular Session

## Item M4

### Lautenschlager Second Subdivision

*Insert a narrative here*

Staff Contact:

September 27, 2011

Dear Members of the Board:

**RE: Final Plat – Lautenschlager Second Subdivision.**

For reasons of Section 19-923 Revised Statutes of Nebraska, as amended, there is herewith submitted a final plat of Lautenschlager Second Subdivision, located east of US Hwy 281 and south of Pine St., in the Village of Doniphan, Hall County, Nebraska.

This final plat proposes to create 4 lots on a tract of land comprising all of Lot One (1), Lautenschlager Subdivision and a part of the Northeast Quarter of the Northwest Quarter (NE1/4NW1/4) all in Section Eight (8), Township Nine (9) North, Range Nine (9) West of the 6<sup>th</sup> P.M. This land consists of approximately 3.869 acres.

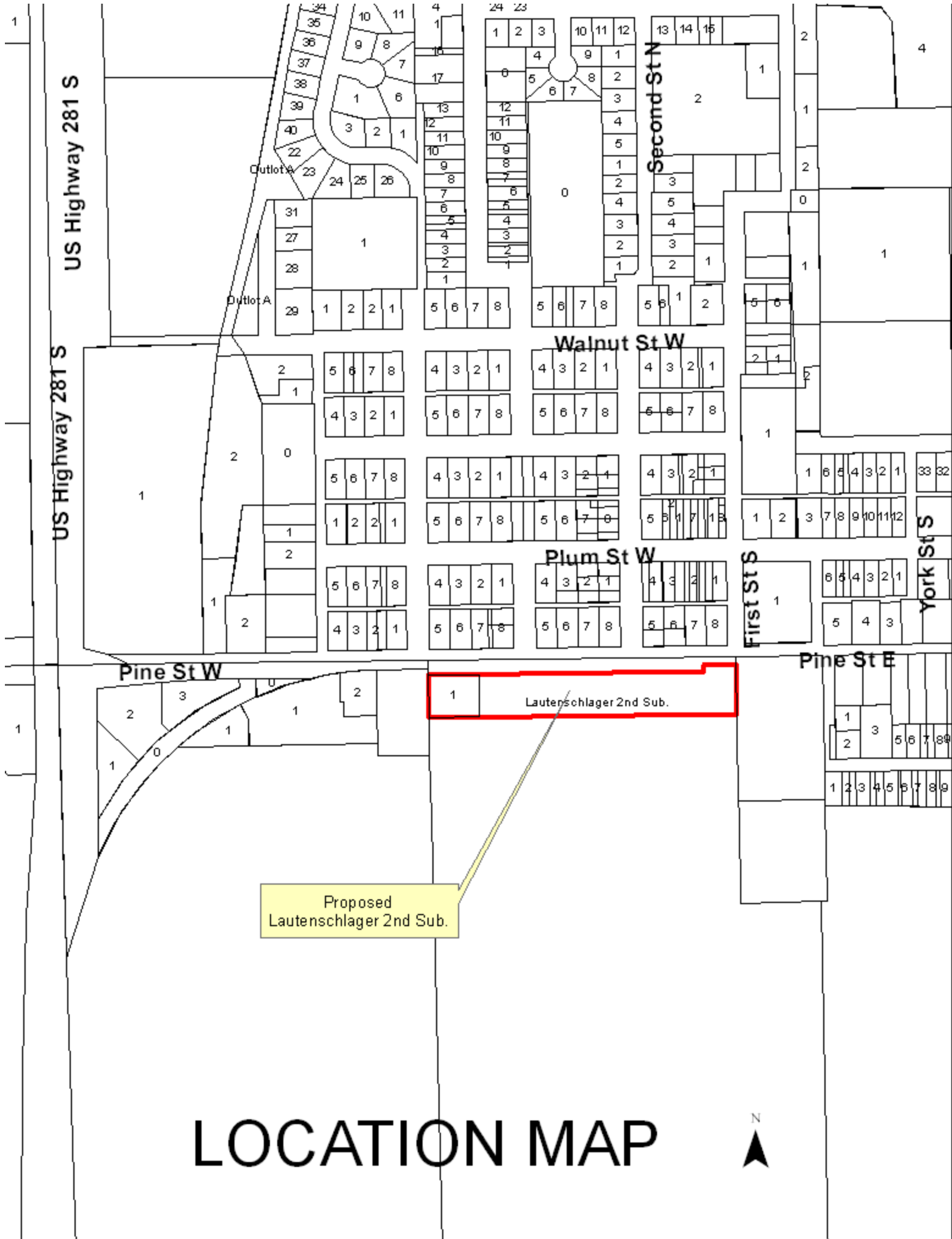
You are hereby notified that the Regional Planning Commission will consider this final plat at the next meeting that will be held at 6:00 p.m. on October 5, 2011 in the Council Chambers located in Grand Island's City Hall.

Sincerely,

Chad Nabity, AICP  
Planning Director

cc: Doniphan City Clerk  
Doniphan City Attorney  
Director of Public Works  
Hall County Zoning  
Manager of Postal Operations  
Rockwell & Associates

This letter was sent to the following School Districts 1R, 2, 3, 8, 12, 19, 82, 83, 100, 126.



# LOCATION MAP

