



Hall County Regional Planning Commission

Wednesday, June 01, 2011
Regular Session

Item M6

Highway Motels Subdivision

Insert a narrative here

Staff Contact:

May 19, 2011

Dear Members of the Board:

RE: Final Plat – Highway Motels Subdivision

For reasons of Section 19-923 Revised Statutes of Nebraska, as amended, there is herewith submitted a final plat of Highway Motels Subdivision, in Hall County Nebraska.

This final plat proposes to create 3 lots on a tract of land comprising a part of the Southeast Quarter of the Southeast Quarter (SE 1/4, SE 1/4) of Section Twenty-Four (24), Township Ten (10) North, Range Ten (10) West of the Sixth P.M., in Hall County, Nebraska, said tract containing 4.4060 acres.

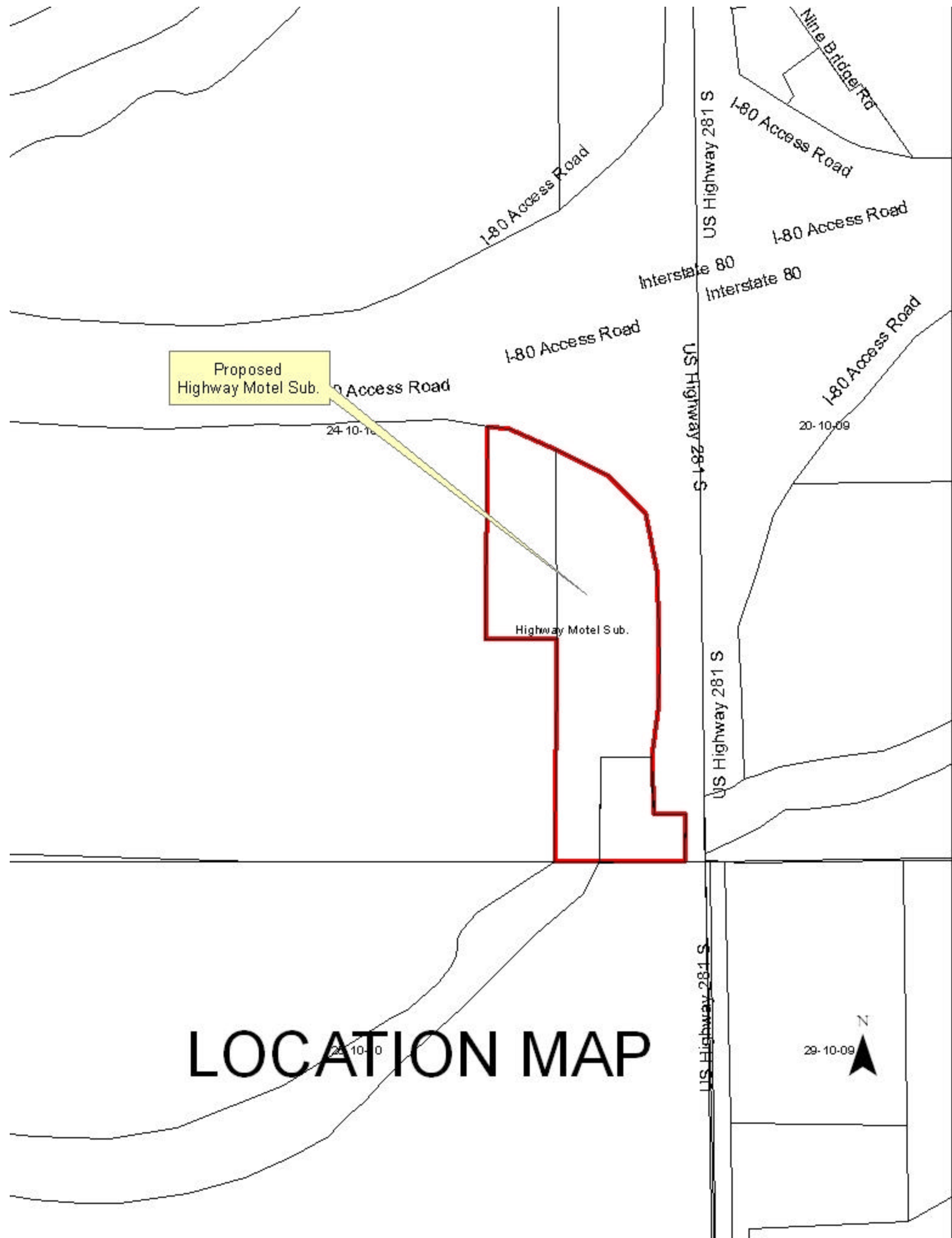
You are hereby notified that the Regional Planning Commission will consider this final plat at the next meeting that will be held at 6:00 p.m. on June 1, 2011 in the Council Chambers located in Grand Island's City Hall.

Sincerely,

Chad Nabity, AICP
Planning Director

Cc: Hall County Clerk
Hall County Attorney
Hall County Public Works
Hall County Zoning Department
Manager of Postal Operations
Olsson and Associates

This letter was sent to the following School Districts 1R, 2, 3, 8, 12, 19, 82, 83, 100, 126.



LOCATION MAP

HIGHWAY MOTELS SUBDIVISION

HALL COUNTY, NEBRASKA

FINAL PLAT

