



Hall County Regional Planning Commission

Wednesday, July 11, 2012

Regular Meeting

Item M1

Final Plats

Staff Contact: Chad Nabity

June 28, 2012

Dear Members of the Board:

RE: Final Plat – Sheaffer Second Subdivision

For reasons of Section 19-923 Revised Statutes of Nebraska, as amended, there is herewith submitted a final plat of Sheaffer Second Subdivision, in Grand Island, Hall County Nebraska.

This final plat proposes to create 2 lots on a tract of land comprising a part of the Northeast Quarter of the Southwest Quarter (NW1/4 SW1/4) of Section Twenty Four (24), Township Eleven North, Range Ten (10) West of the Sixth P.M., in Hall County, Nebraska, said tract containing 5.605 acres.

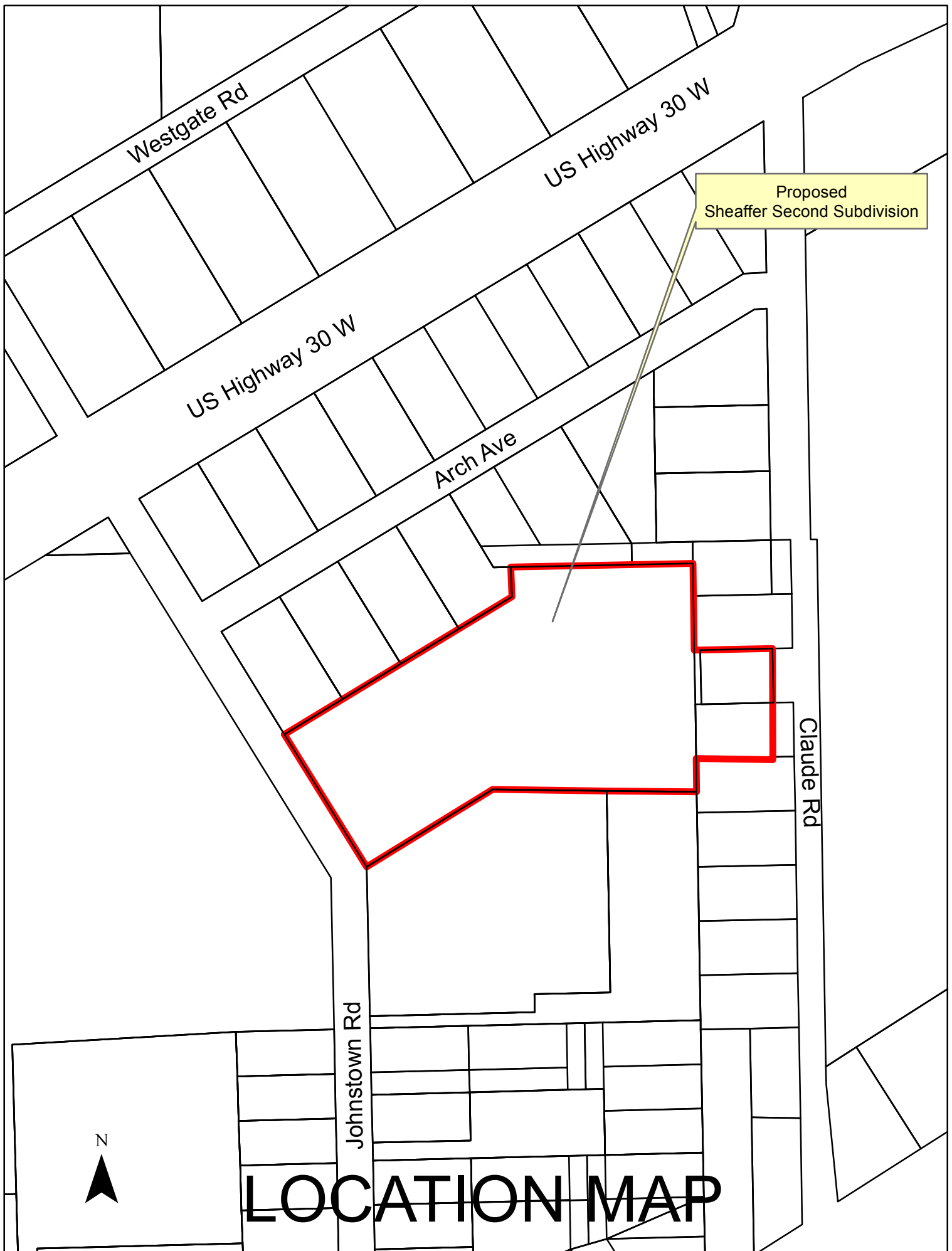
You are hereby notified that the Regional Planning Commission will consider this final plat at the next meeting that will be held at 6:00 p.m. on July 11, 2012 in the Council Chambers located in Grand Island's City Hall.

Sincerely,

Chad Nabity, AICP
Planning Director

Cc: City Clerk
City Attorney
City Public Works
City Building Department
City Utilities
Benjamin & Associates, INC

This letter was sent to the following School Districts 1R, 2, 3, 8, 12, 19, 82, 83, 100, 126.



June 28, 2012

Dear Members of the Board:

RE: Final Plat – White Tail Country Subdivision

For reasons of Section 19-923 Revised Statutes of Nebraska, as amended, there is herewith submitted a final plat of White Tail Country Subdivision, in Hall County Nebraska.

This final plat proposes to create 1 lot on a tract of land comprising a part of the Northeast Quarter (NE1/4), Section Twenty One (21), Township Nine (9) North, Range Eleven (11) in Hall County, Nebraska, said tract containing 4.173 acres.

You are hereby notified that the Regional Planning Commission will consider this final plat at the next meeting that will be held at 6:00 p.m. on July 11, 2012 in the Council Chambers located in Grand Island's City Hall.

Sincerely,

Chad Nabity, AICP
Planning Director

Cc: Hall County Clerk
Hall County Attorney
Hall County Public Works
Hall County Zoning Department
Manager of Postal Operations
Rockwell and Associates, LLC

This letter was sent to the following School Districts 1R, 2, 3, 8, 12, 19, 82, 83, 100, 126.

