



# Hall County Regional Planning Commission

Wednesday, December 01, 2010

Regular Meeting

Item M3

**Anderson Third Sub.**

*Insert a narrative here*

Staff Contact:

November 22, 2010

Dear Members of the Board:

**RE: Final Plat – Anderson Third Subdivision**

For reasons of Section 19-923 Revised Statutes of Nebraska, as amended, there is herewith submitted a final plat of Anderson Third Subdivision, located in the City of Grand Island, in Hall County Nebraska.

This final plat proposes to create 1 lot on a tract of land, Part of the North Half of the Northeast Quarter (N1/2 NE1/4) of Section Twenty-Four (24), Township Eleven (11) North, Range Ten (10) West of the 6<sup>th</sup> P.M., in the City of Grand Island, Hall County Nebraska, and said tract containing 5.165 acres.

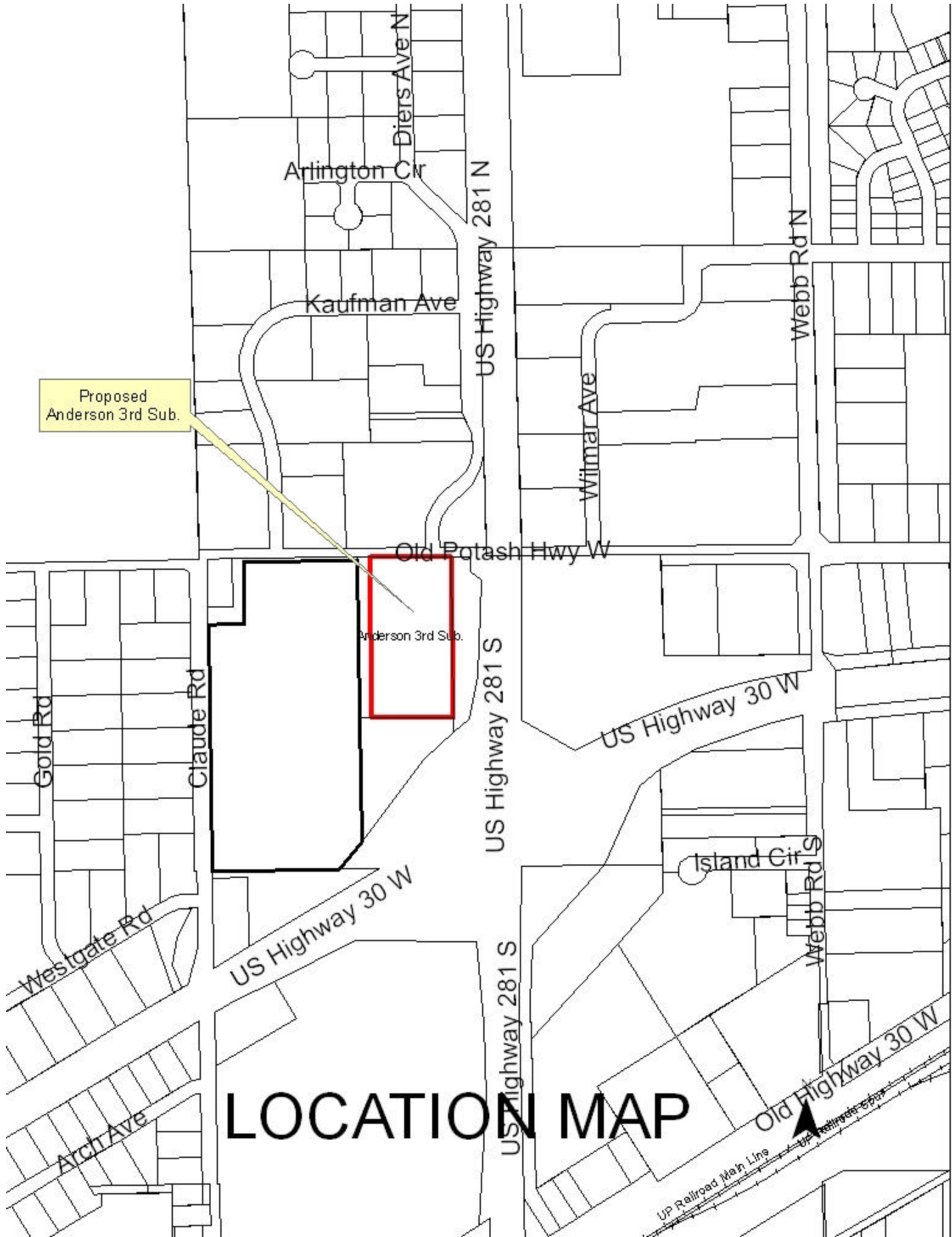
You are hereby notified that the Regional Planning Commission will consider this final plat at the next meeting that will be held at 6:00 p.m. on December 1, 2010 in the Council Chambers located in Grand Island's City Hall.

Sincerely,

Chad Nabity, AICP  
Planning Director

Cc: City Clerk  
City Attorney  
City Public Works  
City Building Inspections  
City Utilities  
Manager of Postal Operations  
Olsson and Associates

This letter was sent to the following School Districts 1R, 2, 3, 8, 12, 19, 82, 83, 100, 126.



Proposed  
Anderson 3rd Sub.

Arlington Cir

Kaufman Ave

Old Potash Hwy W

Anderson 3rd Sub.

US Highway 281 N

Wiltmar Ave

Webb Rd N

US Highway 281 S

US Highway 30 W

Island Cir S

Webb Rd S

US Highway 281 S

US Highway 30 W


Old Highway 30 W

LOCATION MAP

UP Railroad Main Line

[illegible]

CITY LEAN

 <b>OLSSON</b> ASSOCIATES	3611 East 2nd Street P.O. Box 1872 Grand Island, NE 68022-1872 TEL: 308-354-8786 FAX: 308-334-6792	PROJECT NO. 2018-0079  <b>MURRAY SURVEY</b>  Rte. 144, 144th & 14th St. Rte. 144, 144th & 14th St.
	3611 East 2nd Street P.O. Box 1872 Grand Island, NE 68022-1872 TEL: 308-354-8786 FAX: 308-334-6792	PROJECT NO. 2018-0079  <b>MURRAY SURVEY</b>  Rte. 144, 144th & 14th St. Rte. 144, 144th & 14th St.