



Hall County Regional Planning Commission

Wednesday, February 03, 2010
Regular Meeting Packet

Commission Members:

Ray Aguilar	Grand Island	
John Amick	Hall County	
Karen Bredthauer	Grand Island	Vice Chairperson
Julie Connelly	Grand Island	
Scott Eriksen	Grand Island	
Mark Haskins	Hall County	
Bill Hayes	Doniphan	
Jaye Monter	Cairo	
Pat O'Neill	Hall County	Chairperson
Deb Reynolds	Hall County	
Leslie Ruge	Alda	Secretary
Don Snodgrass	Wood River	

Regional Planning Director: Chad Nabity

Technician:

Edwin Maslonka

Secretary:

Rose Woods

6:00:00 PM
Council Chambers - City Hall
100 East First Street

Call to Order

Roll Call

A - SUBMITTAL OF REQUESTS FOR FUTURE ITEMS

Individuals who have appropriate items for Commission consideration should complete the Request for Future Agenda Items form located at the Regional Planning Office on the second floor of City Hall. If the issue can be handled administratively without Commission action, notification will be provided. If the item is scheduled for a meeting, notification of the date will be given.

B - RESERVE TIME TO SPEAK ON AGENDA ITEMS

This is an opportunity for individuals wishing to provide input on any of tonight's agenda items to reserve time to speak. Please come forward, state your name and address, and the Agenda topic on which you will be speaking.

DIRECTOR COMMUNICATION

This is an opportunity for the Director to comment on current events, activities, and issues of interest to the commission.



Hall County Regional Planning Commission

Wednesday, February 03, 2010
Regular Meeting

Item .A1

February 3, 2010 Summary

Insert a narrative here

Staff Contact:

**Staff Recommendation Summary
For Regional Planning Commission Meeting
February 3, 2010**

- 4. Public Hearing** – Adoption of the Grand Island 1 & 6 Year Street Improvement Plan. (C-06-2010GI) (Hearing, Discussion, Action)
- 5. Public Hearing** – Concerning adoption of 1 & 6 Year Hall County Road Improvement Plan. (C-07-2010HC) (Hearing, Discussion, Action)
- 6. Final Plat – Wild Rose Ranch Estates 2nd Subdivision**, located east of Alda Road and south of Whooping Crane Drive, in Hall County Nebraska consisting of 49.1769 acres (18 Lots). Formalizing the lot lines using currently accepted practices, this does not result in the creation of any additional lots.
- 7. Final Plat – O.N.E. Subdivision**, Located south of Airport Rd and west of 190th Rd., in Hall County Nebraska, consisting of 2.08 acres, (1 Lot). This splits an existing farmstead from a parcel of 20 acres or more.
- 8. Request to Vacate Hulme Subdivision**, request to vacate Lot 1, located west of 190th Rd. and north of Airport Road, Hall County, Nebraska.
- 9. Final Plat – Hulme 2nd Subdivision**, located west of 190th Rd. and north of Airport Road, Hall County, Nebraska, consisting of 5.04 acres, (1Lot). This splits an existing farmstead from a parcel of 20 acres or more.



Hall County Regional Planning Commission

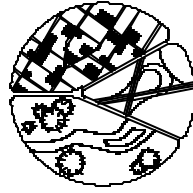
Wednesday, February 03, 2010
Regular Meeting

Item E2

January Meeting Minutes

Insert a narrative here

Staff Contact:



THE REGIONAL PLANNING COMMISSION OF HALL COUNTY, GRAND ISLAND,
WOOD RIVER AND THE VILLAGES OF ALDA, CAIRO, AND DONIPHAN, NEBRASKA

Minutes
for
January 6, 2010

The meeting of the Regional Planning Commission was held Wednesday, January 6, 2010, in the Community Meeting Room - City Hall – Grand Island, Nebraska. Notice of this meeting appeared in the "Grand Island Independent" December 26, 2009.

Present:	Pat O'Neill	Leslie Ruge
	Deb Reynolds	Bill Hayes
	Mark Haskins	Ray Aguilar
	Julie Connelly	

Absent: Scott Eriksen, Karen Bredthauer, Jaye Monter, Don Snodgrass
and John Amick

Other:

Staff: Chad Nabity, Rose Woods

Press:

1. Call to order.

Chairman O'Neill called the meeting to order at 6:00 p.m. He stated that this was a public meeting subject to the open meetings laws of the State of Nebraska. He noted that the requirements for an open meeting were posted on the wall in the room and easily accessible to anyone who may be interested in reading them.

2. Minutes of December 2, 2009 meeting.

A motion was made by Reynolds and seconded by Hayes, to approve the Minutes of the December 2, 2009 meeting as presented.

The motion carried with 7 members present and 6 voting in favor (Aguilar, O'Neill, Ruge, Reynolds, Haskins and Hayes) and 1 member abstaining (Connelly).

3. Request time to speak.

No one requested time to speak.

4. Public Hearing – Readoption of the Grand Island Zoning Map. (C-04-2010GI)

O'Neill opened the Public Hearing.

On March 25, 2008 the Grand Island City Council approved using a map produced from the Hall County GIS as the official zoning map for the City of Grand Island based on the 2004 Comprehensive Plan for the City of Grand Island with all changes to the map as approved through March 25, 2008. As a matter of course, the City of Grand Island occasionally re-adopts the zoning map incorporating all changes since the last re-adoption of the entire map along with other changes as recommended by staff and the Hall County Regional Planning Commission. This will allow a newly revised and adopted copy of the map to be printed for official use by Council, staff and the general public. This hearing is being held for that purpose. This map will also serve to give notice to all parties that the Grand Island City limits, and 2 mile extraterritorial jurisdiction, is as shown on the map.

O'Neill closed the Public Hearing.

A motion was made by Haskins and seconded by Aguilar to approve the new zoning map for Grand Island as presented. A roll call vote was taken and the motion passed with 7 members present (Aguilar, O'Neill, Ruge, Hayes, Reynolds, Haskins and Connelly) voting in favor and no member voting against.

5. Public Hearing – Request to amend the RD zone for 1613 & 1615 Hope Street, in Grand Island, Hall County, Nebraska (C-05-2010GI).

O'Neill opened the Public Hearing.

Nabity stated this request was to amend the existing Nottingham Estates RD-Residential Development zone, east side of Hope Street and north of Church Road, to combine lots 19 and 20 of Nottingham Estates Subdivision and permit the construction of a duplex unit on the combined lots.

This amendment request represents a change to the final development plan approval issued in 1981, as part of the Nottingham Estates RD-Residential Development rezoning of the subject property.

The original plat as approved would have the building on lots 19 and 20 connected with the building on the lot to the north.

Changes to the development plan were approved in 1992 to build the existing units to the north on the corner. Additional changes were approved for the

duplex immediately north of this property in 2007. No changes were made at that time to the plan for Lots 19 and 20 as they were under separate ownership and not included in that application.

The property is not currently being used or maintained in a residential manner. Changes to the development plan as presented would allow for compatible residential development and would finish out this subdivision. Sewer and Water are available.

O'Neill closed the Public Hearing.

A motion was made by Aguilar and seconded by Reynolds to approve the amended RD rezone as presented. A roll call vote was taken and the motion passed with 7 members present (Aguilar, O'Neill, Hayes, Reynolds, Haskins, Ruge and Connelly) voting in favor.

6. Public Hearing -Concerning an amendment to the redevelopment plan for CRA area #1, 11th & Poplar Street, in Grand Island, Hall County, Nebraska. Resolution 10-02.

O'Neill opened the Public Hearing.

Nabity explained this is a resolution to recommend approval of a Redevelopment Plan for CRA area #2, located at 11th and Poplar in Grand Island. Habitat for Humanity is proposing to build houses on at least 4 vacant lots along Poplar Street. City water is not available to the lots. City water is available on 9th Street, 11th Street and 12th Street. The CRA is proposing to finance a project to install the water line. CRA intends to recoup their investment from the water line through Tax Increment Financing. The installation of this water line will benefit all of the houses along this stretch of Poplar Street and create 3 additional buildable lots beyond the 4 Habitat is planning to build on.

O'Neill closed the Public Hearing.

A motion was made by Aguilar and seconded by Reynolds to approve a resolution 2010-02 as presented. A roll call vote was taken and the motion passed with 7 members present (Aguilar, O'Neill, Hayes, Reynolds, Haskins, Ruge and Connelly) voting in favor.

7. Public Hearing – – Concerning an amendment to the redevelopment plan for CRA area #1, 423 W 4th Street, in Grand Island, Hall County, Nebraska. Resolution 10-03.

O'Neill opened the Public Hearing.

Nabity explained this is a resolution to recommend approval of a Redevelopment Plan for CRA area #2, Pharmacy Properties LLC is proposing to a U-Save Pharmacy at the corner of 4th and Cedar. The developer is seeking Tax

Increment Financing to offset the cost of acquisition of the property and site preparation. The property is vacant and has been since 1956.

O'Neill closed the Public Hearing.

A motion was made by Aguilar and seconded by Haskins to approve a resolution 2010-03 as presented. A roll call vote was taken and the motion passed with 7 members present (Aguilar, O'Neill, Hayes, Reynolds, Haskins, Ruge and Connelly) voting in favor.

Consent Agenda

- 8. Final Plat – Nottingham Estates Third Subdivision**, located east of Hope St., and north of Church Rd., in Grand Island, Nebraska, consisting of .166 acres. (1 Lot). City sewer and water are available.
- 9. Final Plat – Rathgeber Acres Subdivision**, located south of Pheasant Drive and west of Gunbarrel Rd., in the 2 mile extraterritorial jurisdiction of Grand Island, Hall County, Nebraska, consisting of 7.091 acres. (3 Lots). City sewer and water are not available.
- 10. Final Plat – Parmley Subdivision**, located south of 9th Street and east of Pine Street, in Grand Island, Nebraska, consisting of .1996 acres and (2 Lots). This subdivision will create substandard lots. Council will be asked to waive the minimum lot size requirements for this subdivision. Each lot is already occupied by a residential structure. Each structure is connected individually to city water and sewer.

A motion was made by Ruge and seconded by Hayes to approve the Consent Agenda as presented. A roll call vote was taken and the motion passed with 7 members present (Aguilar, O'Neill, Hayes, Reynolds, Haskins, Ruge and Connelly) voting in favor.

11.Planning Director's Report

Nabity asked for a committee to do a review of the Wind/Tower Regulations. O'Neill and Ruge volunteered to be on the committee. NPZA conference is next month and there is money in the budget for those who wish to attend a meeting.

10.Next Meeting February 3, 2010

11.Adjourn

Chairman O'Neill adjourned the meeting at 6:30 p.m.

Leslie Ruge, Secretary

by Rose Woods



Hall County Regional Planning Commission

Wednesday, February 03, 2010
Regular Meeting

Item F3

Concerning adoption of the Grand Island 1 & 6 Year Street Plan

Insert a narrative here

Staff Contact:



City of Grand Island

Tuesday, January 26, 2010

Council Session

Item H1

**Approving Referral of the One & Six Year Street Improvement
Plan to the Regional Planning Commission**

Staff Contact: Steven P. Riehle, Public Works Director

Council Agenda Memo

From: Steven P. Riehle, Public Works Director

Meeting: January 26, 2010

Subject: Approving Referral of the One & Six Year Street Improvement Plan to the Regional Planning Commission

Item #'s: H-1

Presenter(s): Steven P. Riehle, Public Works Director

Background

Attached is staff's recommended One and Six Year Street Improvement Plan. Adoption of a One and Six Year Street Improvement Plan is required by State law as part of the requirements to receive approximately three million dollars of gas tax funds each year.

The attached proposed One and Six Year Street Improvement Plan will be reviewed by the Regional Planning Commission and come back to the City Council for discussion, modification, and adoption in February. Administration recommends that the draft be referred to the Regional Planning Commission.

Our recommendation for the review of the proposed plan is as follows:

- Tuesday, January 26, 2010 - City Council refers the plan to the Regional Planning Commission
- Wednesday, February 3, 2010 – Regional Planning Commission conducts a Public Hearing and forwards a recommendation to the City Council
- Tuesday, February 9, 2010 – City Council hears a presentation from staff, conducts a Public Hearing, and passes a Resolution adopting the plan
- Prepare and submit the report to the Nebraska Department of Roads by March 1, 2010

The proposed One & Six Year SIP is being presented to council for referral to the Regional Planning Commission based on a 400 Capital Improvement Plan ranking system that was presented at the 2009 city council retreat. The ranking system was updated by a city staff team consisting of the following individuals:

- City Engineering/Public Works Director – Steve Riehle
- Manager of Engineering Services – Dave Goedeken

- Civil Engineering Manager – Ron Underwood
- Parks Department Director – Steve Paustian
- Regional Planning Director – Chad Nabity

The One & Six Year Street Improvement Plan (SIP) typically starts with year one (1) for the current construction year, closely matching the projects in the current fiscal year's budget. The projects in year 1 of the plan are considered "certain", with projects in years 2 through 5 being listed for planning purposes and subject to approval by council during the budget process. Future projects for years 2 through 5 and after were scheduled based on council and public input.

Discussion

A few of the 2010 projects that should be discussed include:

Infrastructure Contingency Funds (Emergency)

City Staff believes it is good fiscal management to include funds for emergencies.

Resurfacing US Highway 34/281 from north of I-80 to UPRR/Old Highway 30 Overpass
Construction projects on the state highway system within the city limits are typically 80% NDOR and 20% city cost. The City is a participant in a stimulus project to make improvements to US Hwy 34/US Hwy 281 from just north of I-80 to Capital Avenue.

1. The northbound lanes will be resurfaced from north of I-80 to Stolley Park Road.
2. Patching will be done on the southbound lanes from Capital down to Stolley Park Road (some was done in 2009)
3. Complete removal and replacement of the 2 northbound lanes from Old Potash Hwy to Capital Ave with new concrete. The stimulus project is to be 100% stimulus funds.
4. Adding northbound right turn lanes at Faidley, 13th and State. The City's Capital Ave widening project already built a northbound right turn lane on US Hwy 281 at Capital Avenue.
5. Lengthening the northbound left turn lanes at Old Potash, Faidley, 13th and State Street. The City's Capital Ave widening project already lengthened the northbound left turn lane on US Hwy 281 at Capital Ave.

The NDOR is not using stimulus funds for their 80% share of construction engineering, so we will be signing a supplement to the project agreement to use the City's Federal Aid Transportation Funds for our 20% share of construction engineering.

South Locust Street to I-80

The plans, specifications and estimate (PS&E) package for the project was delivered to the NDOR on Friday, September 25, 2009. The environmental work on the project began in May 2009 with final environmental clearance received on December 23, 2009.

The NDOR has called with a few questions on the PS&E package. Manager of Engineering Services, Dave Goedecken, is keeping track of the requests. We anticipate receiving a summary of comments from the NDOR in February and anticipate less than 1

week of AutoCad and engineering time for Public Works Engineering staff to update the PS&E package. The NDOR will submit the updated PS&E package to the Federal Highway Administration (FHWA) for approval and obligation of funds. The funds have to be obligated before March 1, 2010. The City has requested a completion date for the work that is before the 2010 State Fair, but the final schedule is set by the NDOR and is highly dependent on when the project can be scheduled for bid opening and environmental restrictions that are being placed on the project because of its proximity to the Platte River.

South Locust Street to I-80 – Preliminary Engineering

The City performed the civil engineering design work for this project in-house saving almost \$187,000 in consultant fees. Funds were left in the 2010 budget in case environmental work or preliminary engineering work is needed.

Build Pipes from US Highway 30 to Wasmer Cell

The PS&E package for the project was completed by Kirkham Michael consulting engineers. The NDOR is busy working on Transportation Enhancement & local ARRA stimulus projects for communities across Nebraska and has asked us not to submit the package until April 2010.

Build Drainway from Central Community College to Wood River

The 1978 drainage plan, prepared by McGaughy, Marshall and McMillan, designated a drainage outlet to the Wood River to serve the southwest portion of the City. In 1983, when Stolley Park Road was paved, a temporary connection was made to drain the Brentwood area and some surrounding land. With the large amount of precipitation in recent years, the Stolley Park system has been badly overloaded.

Currently Olsson Associates are working on a design to complete the connection to the Wood River in a similar manner as was designated by the 1978 plan. Construction of this outlet will serve to reduce the dependence on the Stolley Park drain and provide a more positive drainage alignment for the Brentwood area.

Quiet Zone – UPRR Corridor – Oak, Pine, Elm & Walnut

Felsburg, Holt & Ullevig (FHU) was asked to update the plans to narrow the street crossings by Amendment #1, which was approved by the city council on October 13, 2009. The revised plans were sent to the Union Pacific Railroad (UPRR) on January 13, 2010. The transmittal letter asked the UPRR to approve the plans and return an agreement to the City for construction and maintenance of the wayside horn system.

Alternatives

It appears that the Council has the following alternatives concerning the issue at hand. The Council may:

1. Move to approve
2. Refer the issue to a Committee

3. Postpone the issue to future date
4. Take no action on the issue

Recommendation

City Administration recommends that the Council refer the One and Six Year Street Improvement Plan to the Regional Planning Commission.

Sample Motion

Move to approve referral of the One and Six Year Street Improvement Plan.

Proposed 1 & 6 Year Street Improvement Plan

1/26/2010

2010 Construction (Year 1)	City Cost
Locust to I-80 - Grading and Paving of northbound lanes	\$126,000
Resurfacing US Hwy 34/281 from north of I-80 to UPRR/Old Hwy 30 Overpass	\$22,000
Construction of NW GI Flood Control Project	\$725,000
Realign Walnut Ent. @ Custer/15th w/ Signal	\$100,540
Build Pipes from US Hwy 30 to Wasmer Cell	\$220,000
Build Drainway from CCC to Wood River	\$382,500
Capital Ave - Moores Creek Drainway to Webb Road	\$150,000
Quiet Zone - UPRR Corridor - Oak, Pine, Elm & Walnut	\$150,000
Stolley - Asphalt Widening - Santa Anita Circle to Fair Parking Lot	\$200,000
Signal @ Front and Webb	\$106,000
PVIP Drainage Project - Phase 1	\$127,000
Integrated/Comprehensive Drainage Plan	\$115,000
Trail along Moores Creek Drain - State to Capital Connector	\$107,970
Moores Creek Drain - Rogers Well to South of Old Potash	\$250,000
Annual Sidewalk Projects	\$25,000
TOTAL	\$2,807,010

2011 Construction (Year 2)	
Construction of NW GI Flood Control Project	\$400,000
Locust Trail - Superstructure over 2 Platte River Bridges	\$92,030
Concrete Lining of Drainage Ditches	\$50,000
Annual Sidewalk Projects	\$25,000
Annual Paving Program (Assessment Districts)	\$750,000
TOTAL	\$1,317,030

2012 Construction (Year 3)	
Construction of NW GI Flood Control Project	\$400,000
Quiet Zone - UPRR Corridor - Lincoln, Broadwell & Blaine/Custer	\$150,000
Broadwell Ave/ UPRR - Environmental Study/Preliminary Engineering	\$128,000
Independence Ave Ditch - Design	\$80,000
Blaine Bridges over WR - Design and ROW	\$45,000
Trail along Veteran's Home from Capital & Webb to Eagle Scout Park	\$120,000
Round-A-Bout @ Capital Ave & North Rd	\$360,000
Faidley Ave - North Rd east to Irongate Ave (approx 2,000')	\$112,500
Update Moores Creek Drainage Plan	\$39,000
Blaine Bridge Replacement with culverts	\$50,000
Broadwell Ave/UPRR- Final Design & ROW Appraisal	\$128,000
Signal @ US Hwy 30 (2nd Street) and Lincoln Ave	\$55,000
Broadwell Ave/UPRR - ROW	\$200,000
Concrete Lining of Drainage Ditches	\$50,000
PVIP Drainage Project - Phase 2	\$99,750
Independence - Construct Culverts & Fill in West Ditch	\$70,000
Annual Sidewalk Projects	\$25,000
Annual Paving Program (Assessment Districts)	\$750,000
TOTAL	\$2,862,250

2013 Construction (Year 4)	
Construction of NW GI Flood Control Project	\$400,000
Trail along Locust from I-80 to WR Floodway	\$120,000
Concrete Lining of Drainage Ditches	\$50,000
US 30 Widening - West City Limits to HWY 281	\$1,890,000
Annual Sidewalk Projects	\$25,000
Annual Paving Program (Assessment Districts)	\$750,000
TOTAL	\$3,235,000

2014 Construction (Year 5)	
Construction of NW GI Flood Control Project	\$400,000
Concrete Lining of Drainage Ditches	\$50,000
Trail along I-80 from Mormon Island to Locust	\$120,000
Annual Sidewalk Projects	\$25,000
Husker Hwy (US Hwy 34) from US Hwy 281 to Locust Street	\$1,336,000
Lighting on US Hwy 281 from Stolley Park to Old Potash	\$250,000
Signal @ US HWY 34/281 and Wildwood Road	\$85,000
Annual Paving Program (Assessment Districts)	\$750,000
TOTAL	\$3,016,000

2015 & After Construction (Year 6 & After)	
Trail - Along Locust from US Hwy 34 to Stagecoach	\$120,000
Broadwell Ave/UPRR - Construction	\$2,160,000
Concrete Lining of Drainage Ditches	\$50,000
Annual Sidewalk Projects	\$25,000
Stolley - Locust to Fonner / HEC / Fair Entrance	\$1,200,000
Stolley - Fonner / HEC / Fair Entrance to Stuhr Road	\$920,000
Husker Hwy West of US HWY 34/281 Intersection	\$1,200,000
Signal @ US HWY 34/281 and Rae Road	\$67,000
Miscellaneous Safety Projects - TBD	\$150,000
North Road over UPRR	\$1,520,000
Stolley Park Rd & North Rd Intersection	\$146,000
Left Turn lane on 13th @ Redwood/Mansfield	\$62,000
State/Diers Intersection Improvements	\$390,000
Left Turn Lane on Husker Hwy @ HLHS	\$62,000
Shady Bend Road @ UPRR - East Bypass	\$3,200,000
Left Turn Lane - North Road at NWHS	\$56,000
Misc Signals (TBD)	\$112,000
Annual Paving Program (Assessment Districts)	\$750,000
North Road & 13th St	\$300,000
Realign Barr Ent. @ Stolley/Adams w/ Signal	\$360,000
Misc. Major Drainage Development	\$250,000
Swift Road - WWTP to Stuhr Road	\$450,000
Capital Ave - Webb Road to Broadwell Ave	\$1,200,000
Resurface Wildwood from US Hwy 281 to Locust St	\$876,000
Moores Creek - Old Potash to Edna	\$150,000
3rd St. Widening - Adams to Eddy	\$90,000
Capital Ave - Broadwell Ave to St. Paul Road	\$1,000,000

TOTAL	<u>\$16,866,000</u>
-------	---------------------



Hall County Regional Planning Commission

Wednesday, February 03, 2010
Regular Meeting

Item F4

Concerning adoption of Hall County 1 & 6 Year Road Plan

Insert a narrative here

Staff Contact:



2010

ONE AND SIX YEAR
ROAD PROGRAM

HALL COUNTY,
NEBRASKA

Sheet 1 of 1

NBCS Form 11, Jul 96

Sheet 1 of 1

Board of Public Roads Classifications and Standards
Form 7 One- and Six-Year Plan
Highway or Street Improvement Project

County: C40 - Hall County	City:	Village:																
Location Description: On a north and south road between Section 27 & 28, T-11-N, R-12-W of the 6 th P.M., Hall County, NE MCGuire Road 44 P 3																		
Existing Surface Type and Structures: (Such as dirt, gravel, asphalt, concrete, culvert, or bridge) Gravel 16' x 60' Trans Joist Bridge																		
Average Daily Traffic: 2008 = 75, 2028 = 135		Classification Type: (As shown on Functional Classification Map) Local																
PROPOSED IMPROVEMENT																		
Design Standard Number: RL-2	Surfacing	Thickness: 2" Width: 20'																
<table style="width: 100%; border: none;"> <tr> <td><input checked="" type="checkbox"/> Grading</td> <td><input type="checkbox"/> Concrete</td> <td><input type="checkbox"/> Right of Way</td> <td><input type="checkbox"/> Lighting</td> </tr> <tr> <td><input type="checkbox"/> Aggregate</td> <td><input type="checkbox"/> Curb & Gutter</td> <td><input type="checkbox"/> Utility Adjustments</td> <td><input type="checkbox"/></td> </tr> <tr> <td><input type="checkbox"/> Armor Coat</td> <td><input checked="" type="checkbox"/> Drainage Structures</td> <td><input type="checkbox"/> Fencing</td> <td><input type="checkbox"/></td> </tr> <tr> <td><input type="checkbox"/> Asphalt</td> <td><input checked="" type="checkbox"/> Erosion Control</td> <td><input type="checkbox"/> Sidewalks</td> <td><input type="checkbox"/></td> </tr> </table>			<input checked="" type="checkbox"/> Grading	<input type="checkbox"/> Concrete	<input type="checkbox"/> Right of Way	<input type="checkbox"/> Lighting	<input type="checkbox"/> Aggregate	<input type="checkbox"/> Curb & Gutter	<input type="checkbox"/> Utility Adjustments	<input type="checkbox"/>	<input type="checkbox"/> Armor Coat	<input checked="" type="checkbox"/> Drainage Structures	<input type="checkbox"/> Fencing	<input type="checkbox"/>	<input type="checkbox"/> Asphalt	<input checked="" type="checkbox"/> Erosion Control	<input type="checkbox"/> Sidewalks	<input type="checkbox"/>
<input checked="" type="checkbox"/> Grading	<input type="checkbox"/> Concrete	<input type="checkbox"/> Right of Way	<input type="checkbox"/> Lighting															
<input type="checkbox"/> Aggregate	<input type="checkbox"/> Curb & Gutter	<input type="checkbox"/> Utility Adjustments	<input type="checkbox"/>															
<input type="checkbox"/> Armor Coat	<input checked="" type="checkbox"/> Drainage Structures	<input type="checkbox"/> Fencing	<input type="checkbox"/>															
<input type="checkbox"/> Asphalt	<input checked="" type="checkbox"/> Erosion Control	<input type="checkbox"/> Sidewalks	<input type="checkbox"/>															
Bridge to Remain in Place	Roadway Width:	Length: Type:																
New Bridge	Roadway Width: 30'	Length: 70' Type: Concrete Slab																
Box Culvert	Span: Rise:	Length: Type:																
Culvert	Diameter:	Length: Type:																
Bridges and Culverts Sized	<input type="checkbox"/> Yes <input type="checkbox"/> N/A <input checked="" type="checkbox"/> Hydraulic Analysis Pending																	
Other Construction Features: Replace existing 16' x 60' transverse joist bridge with a 30' x 70' concrete slab bridge																		
ESTIMATED COST (in Thousands) ★ OPTIONAL	★ COUNTY 150	★ CITY 0																
	★ STATE 0	★ FEDERAL 0																
	★ OTHER 0	TOTAL 150																
Project Length: (Nearest Tenth, State Unit of Measure) 0.6		Project No.: C40(313)-1																
Signature:		Title: Hall County Surveyor Date: January 25, 2010																

Board of Public Roads Classifications and Standards
Form 7 One- and Six-Year Plan
Highway or Street Improvement Project

County: C40 - Hall County	City:	Village:																		
Location Description: A street located in Whites Sunny Slopes Subdivision located in the Northwest Quarter of Section 12, T 9 N, R 10 W; Sunny Drive																				
Existing Surface Type and Structures: (Such as dirt, gravel, asphalt, concrete, culvert, or bridge) Asphalt																				
Average Daily Traffic: 2010 = 75, 2030 = 125		Classification Type: (As shown on Functional Classification Map) Local																		
PROPOSED IMPROVEMENT																				
Design Standard Number: RL-2	Surfacing	Thickness: 4" Width: 24'																		
<table style="width: 100%; border: none;"> <tr> <td><input checked="" type="checkbox"/> Grading</td> <td><input type="checkbox"/> Concrete</td> <td><input type="checkbox"/> Right of Way</td> <td><input type="checkbox"/> Lighting</td> </tr> <tr> <td><input type="checkbox"/> Aggregate</td> <td><input type="checkbox"/> Curb & Gutter</td> <td><input type="checkbox"/> Utility Adjustments</td> <td><input type="checkbox"/></td> </tr> <tr> <td><input type="checkbox"/> Armor Coat</td> <td><input type="checkbox"/> Drainage Structures</td> <td><input type="checkbox"/> Fencing</td> <td><input type="checkbox"/></td> </tr> <tr> <td><input checked="" type="checkbox"/> Asphalt</td> <td><input type="checkbox"/> Erosion Control</td> <td><input type="checkbox"/> Sidewalks</td> <td><input type="checkbox"/></td> </tr> </table>			<input checked="" type="checkbox"/> Grading	<input type="checkbox"/> Concrete	<input type="checkbox"/> Right of Way	<input type="checkbox"/> Lighting	<input type="checkbox"/> Aggregate	<input type="checkbox"/> Curb & Gutter	<input type="checkbox"/> Utility Adjustments	<input type="checkbox"/>	<input type="checkbox"/> Armor Coat	<input type="checkbox"/> Drainage Structures	<input type="checkbox"/> Fencing	<input type="checkbox"/>	<input checked="" type="checkbox"/> Asphalt	<input type="checkbox"/> Erosion Control	<input type="checkbox"/> Sidewalks	<input type="checkbox"/>		
<input checked="" type="checkbox"/> Grading	<input type="checkbox"/> Concrete	<input type="checkbox"/> Right of Way	<input type="checkbox"/> Lighting																	
<input type="checkbox"/> Aggregate	<input type="checkbox"/> Curb & Gutter	<input type="checkbox"/> Utility Adjustments	<input type="checkbox"/>																	
<input type="checkbox"/> Armor Coat	<input type="checkbox"/> Drainage Structures	<input type="checkbox"/> Fencing	<input type="checkbox"/>																	
<input checked="" type="checkbox"/> Asphalt	<input type="checkbox"/> Erosion Control	<input type="checkbox"/> Sidewalks	<input type="checkbox"/>																	
Bridge to Remain in Place	Roadway Width:	Length: Type:																		
New Bridge	Roadway Width:	Length: Type:																		
Box Culvert	Span: Rise: Length:	Type:																		
Culvert	Diameter: Length:	Type:																		
Bridges and Culverts Sized	<input type="checkbox"/> Yes <input checked="" type="checkbox"/> N/A <input type="checkbox"/> Hydraulic Analysis Pending																			
Other Construction Features: Reclaim existing 4" asphalt into stabilized base and place 4" new asphalt.																				
<table border="1" style="width: 100%; border-collapse: collapse;"> <tr> <th style="width: 15%;">ESTIMATED COST (in Thousands)</th> <th style="width: 12.5%;">★ COUNTY</th> <th style="width: 12.5%;">★ CITY</th> <th style="width: 12.5%;">★ STATE</th> <th style="width: 12.5%;">★ FEDERAL</th> <th style="width: 12.5%;">★ OTHER</th> <th style="width: 12.5%;">TOTAL</th> </tr> <tr> <td>★ OPTIONAL</td> <td>50</td> <td>0</td> <td>0</td> <td>0</td> <td>0</td> <td>50</td> </tr> </table>							ESTIMATED COST (in Thousands)	★ COUNTY	★ CITY	★ STATE	★ FEDERAL	★ OTHER	TOTAL	★ OPTIONAL	50	0	0	0	0	50
ESTIMATED COST (in Thousands)	★ COUNTY	★ CITY	★ STATE	★ FEDERAL	★ OTHER	TOTAL														
★ OPTIONAL	50	0	0	0	0	50														
Project Length: (Nearest Tenth, State Unit of Measure) 0.25 Mile				Project No.: C40(395)																
Signature:			Title: Hall County Surveyor		Date: January 25, 2010															

Board of Public Roads Classifications and Standards
Form 7 One- and Six-Year Plan
Highway or Street Improvement Project

County: C40 - Hall County	City:	Village:																
Location Description: On an east and west road beginning at the Northwest corner of Section 33, T 9 N, R 11 W; thence East 4.0 miles to the Northeast corner of Section 36, T 9 N, R 11 W of the 6 th P.M., Hall County, Nebraska Rosedale Road Miles 3N, 3P, 3Q, & 3R																		
Existing Surface Type and Structures: (Such as dirt, gravel, asphalt, concrete, culvert, or bridge) Asphalt																		
Average Daily Traffic: 2010 = 386, 2030 = 536		Classification Type: (As shown on Functional Classification Map) Other Arterial																
PROPOSED IMPROVEMENT																		
Design Standard Number: ROA-2	Surfacing	Thickness: 4" Width: 24'																
<table style="width: 100%; border: none;"> <tr> <td><input checked="" type="checkbox"/> Grading</td> <td><input type="checkbox"/> Concrete</td> <td><input type="checkbox"/> Right of Way</td> <td><input type="checkbox"/> Lighting</td> </tr> <tr> <td><input type="checkbox"/> Aggregate</td> <td><input type="checkbox"/> Curb & Gutter</td> <td><input type="checkbox"/> Utility Adjustments</td> <td><input type="checkbox"/></td> </tr> <tr> <td><input type="checkbox"/> Armor Coat</td> <td><input type="checkbox"/> Drainage Structures</td> <td><input type="checkbox"/> Fencing</td> <td><input type="checkbox"/></td> </tr> <tr> <td><input checked="" type="checkbox"/> Asphalt</td> <td><input type="checkbox"/> Erosion Control</td> <td><input type="checkbox"/> Sidewalks</td> <td><input type="checkbox"/></td> </tr> </table>			<input checked="" type="checkbox"/> Grading	<input type="checkbox"/> Concrete	<input type="checkbox"/> Right of Way	<input type="checkbox"/> Lighting	<input type="checkbox"/> Aggregate	<input type="checkbox"/> Curb & Gutter	<input type="checkbox"/> Utility Adjustments	<input type="checkbox"/>	<input type="checkbox"/> Armor Coat	<input type="checkbox"/> Drainage Structures	<input type="checkbox"/> Fencing	<input type="checkbox"/>	<input checked="" type="checkbox"/> Asphalt	<input type="checkbox"/> Erosion Control	<input type="checkbox"/> Sidewalks	<input type="checkbox"/>
<input checked="" type="checkbox"/> Grading	<input type="checkbox"/> Concrete	<input type="checkbox"/> Right of Way	<input type="checkbox"/> Lighting															
<input type="checkbox"/> Aggregate	<input type="checkbox"/> Curb & Gutter	<input type="checkbox"/> Utility Adjustments	<input type="checkbox"/>															
<input type="checkbox"/> Armor Coat	<input type="checkbox"/> Drainage Structures	<input type="checkbox"/> Fencing	<input type="checkbox"/>															
<input checked="" type="checkbox"/> Asphalt	<input type="checkbox"/> Erosion Control	<input type="checkbox"/> Sidewalks	<input type="checkbox"/>															
Bridge to Remain in Place	Roadway Width:	Length: Type:																
New Bridge	Roadway Width:	Length: Type:																
Box Culvert	Span: Rise:	Length: Type:																
Culvert	Diameter:	Length: Type:																
Bridges and Culverts Sized	<input type="checkbox"/> Yes <input checked="" type="checkbox"/> N/A <input type="checkbox"/> Hydraulic Analysis Pending																	
Other Construction Features: Reclaim existing 4" asphalt into stabilized base and place 4" new asphalt. Project is to reconstruct asphalt road for Nebraska Department of Roads Detour Route due to Highway No. 11 bridge closure and construction over the Platte River.																		
ESTIMATED COST (in Thousands) ★ OPTIONAL	★ COUNTY 250	★ CITY 0	★ STATE 250	★ FEDERAL 0	★ OTHER 0	TOTAL 500												
Project Length: (Nearest Tenth, State Unit of Measure) 4.0 Miles			Project No.: C40(396)															
Signature:		Title: Hall County Surveyor		Date: January 25, 2010														

Board of Public Roads Classifications and Standards
Form 7 One- and Six-Year Plan
Highway or Street Improvement Project

County: C40 - Hall County	City:	Village:																
Location Description: On north and south roads and east and west roads located between sections 11 and 12, sections 11 and 4, sections 4 and 13, sections 12 and 13, and along the east side of sections 12 and 13 all located in T 11 N, R 11 W of the 6 th P.M., Hall County, Nebraska. Roads in the former Cornhusker Army Ammunition Plant																		
Existing Surface Type and Structures: (Such as dirt, gravel, asphalt, concrete, culvert, or bridge) Asphalt																		
Average Daily Traffic: 2010 = 25, 2030 = 25		Classification Type: (As shown on Functional Classification Map) local																
PROPOSED IMPROVEMENT																		
Design Standard Number: RL-3	Surfacing	Thickness: 1" Width: 20'																
<table style="width: 100%; border: none;"> <tr> <td><input checked="" type="checkbox"/> Grading</td> <td><input type="checkbox"/> Concrete</td> <td><input type="checkbox"/> Right of Way</td> <td><input type="checkbox"/> Lighting</td> </tr> <tr> <td><input checked="" type="checkbox"/> Aggregate</td> <td><input type="checkbox"/> Curb & Gutter</td> <td><input type="checkbox"/> Utility Adjustments</td> <td><input type="checkbox"/></td> </tr> <tr> <td><input type="checkbox"/> Armor Coat</td> <td><input type="checkbox"/> Drainage Structures</td> <td><input type="checkbox"/> Fencing</td> <td><input type="checkbox"/></td> </tr> <tr> <td><input type="checkbox"/> Asphalt</td> <td><input type="checkbox"/> Erosion Control</td> <td><input type="checkbox"/> Sidewalks</td> <td><input type="checkbox"/></td> </tr> </table>			<input checked="" type="checkbox"/> Grading	<input type="checkbox"/> Concrete	<input type="checkbox"/> Right of Way	<input type="checkbox"/> Lighting	<input checked="" type="checkbox"/> Aggregate	<input type="checkbox"/> Curb & Gutter	<input type="checkbox"/> Utility Adjustments	<input type="checkbox"/>	<input type="checkbox"/> Armor Coat	<input type="checkbox"/> Drainage Structures	<input type="checkbox"/> Fencing	<input type="checkbox"/>	<input type="checkbox"/> Asphalt	<input type="checkbox"/> Erosion Control	<input type="checkbox"/> Sidewalks	<input type="checkbox"/>
<input checked="" type="checkbox"/> Grading	<input type="checkbox"/> Concrete	<input type="checkbox"/> Right of Way	<input type="checkbox"/> Lighting															
<input checked="" type="checkbox"/> Aggregate	<input type="checkbox"/> Curb & Gutter	<input type="checkbox"/> Utility Adjustments	<input type="checkbox"/>															
<input type="checkbox"/> Armor Coat	<input type="checkbox"/> Drainage Structures	<input type="checkbox"/> Fencing	<input type="checkbox"/>															
<input type="checkbox"/> Asphalt	<input type="checkbox"/> Erosion Control	<input type="checkbox"/> Sidewalks	<input type="checkbox"/>															
Bridge to Remain in Place	Roadway Width:	Length: Type:																
New Bridge	Roadway Width:	Length: Type:																
Box Culvert	Span: Rise: Length:	Type:																
Culvert	Diameter: Length:	Type:																
Bridges and Culverts Sized	<input type="checkbox"/> Yes <input checked="" type="checkbox"/> N/A <input type="checkbox"/> Hydraulic Analysis Pending																	
Other Construction Features: Grind asphalt roads into granular material and maintain as a gravel road. 90 th Road between Capital Avenue and Old Potash Highway 13 th Street between Schauppsville Road and 80 th Road 80 th Road from Old Potash Highway to 13 th Street 80 th Road from 13 th Street north to Heritage locked gate.																		
ESTIMATED COST (in Thousands) ★ OPTIONAL	★ COUNTY	★ CITY	★ STATE	★ FEDERAL	★ OTHER	TOTAL												
	50	0	0	0	0	50												
Project Length: (Nearest Tenth, State Unit of Measure) 5.0 miles			Project No.: C40(397)															
Signature:		Title:		Date:														
		Hall County Surveyor		January 25, 2010														

Board of Public Roads Classifications and Standards
Form 7 One- and Six-Year Plan
Highway or Street Improvement Project

County: C-40 Hall County	City:	Village:																
Location Description: Blaine Street from Schultz Road to 0.3 mile north. Section 21, T 10 N, R 9 W County mile: 10J																		
Existing Surface Type and Structures: (Such as dirt, gravel, asphalt, concrete, culvert, or bridge) None																		
Average Daily Traffic: 2008 = 0, 2028 = 25		Classification Type: (As shown on Functional Classification Map) Local																
PROPOSED IMPROVEMENT																		
Design Standard Number: RL-3	Surfacing	Thickness: Width:																
<table style="width: 100%; border: none;"> <tr> <td><input type="checkbox"/> Grading</td> <td><input type="checkbox"/> Concrete</td> <td><input checked="" type="checkbox"/> Right of Way</td> <td><input type="checkbox"/> Lighting</td> </tr> <tr> <td><input type="checkbox"/> Aggregate</td> <td><input type="checkbox"/> Curb & Gutter</td> <td><input type="checkbox"/> Utility Adjustments</td> <td><input type="checkbox"/></td> </tr> <tr> <td><input type="checkbox"/> Armor Coat</td> <td><input type="checkbox"/> Drainage Structures</td> <td><input type="checkbox"/> Fencing</td> <td><input type="checkbox"/></td> </tr> <tr> <td><input type="checkbox"/> Asphalt</td> <td><input type="checkbox"/> Erosion Control</td> <td><input type="checkbox"/> Sidewalks</td> <td><input type="checkbox"/></td> </tr> </table>			<input type="checkbox"/> Grading	<input type="checkbox"/> Concrete	<input checked="" type="checkbox"/> Right of Way	<input type="checkbox"/> Lighting	<input type="checkbox"/> Aggregate	<input type="checkbox"/> Curb & Gutter	<input type="checkbox"/> Utility Adjustments	<input type="checkbox"/>	<input type="checkbox"/> Armor Coat	<input type="checkbox"/> Drainage Structures	<input type="checkbox"/> Fencing	<input type="checkbox"/>	<input type="checkbox"/> Asphalt	<input type="checkbox"/> Erosion Control	<input type="checkbox"/> Sidewalks	<input type="checkbox"/>
<input type="checkbox"/> Grading	<input type="checkbox"/> Concrete	<input checked="" type="checkbox"/> Right of Way	<input type="checkbox"/> Lighting															
<input type="checkbox"/> Aggregate	<input type="checkbox"/> Curb & Gutter	<input type="checkbox"/> Utility Adjustments	<input type="checkbox"/>															
<input type="checkbox"/> Armor Coat	<input type="checkbox"/> Drainage Structures	<input type="checkbox"/> Fencing	<input type="checkbox"/>															
<input type="checkbox"/> Asphalt	<input type="checkbox"/> Erosion Control	<input type="checkbox"/> Sidewalks	<input type="checkbox"/>															
Bridge to Remain in Place	Roadway Width:	Length: Type:																
New Bridge	Roadway Width:	Length: Type:																
Box Culvert	Span: Rise:	Length: Type:																
Culvert	Diameter:	Length: Type:																
Bridges and Culverts Sized	<input type="checkbox"/> Yes <input checked="" type="checkbox"/> N/A <input type="checkbox"/> Hydraulic Analysis Pending																	
Other Construction Features: Acquire right-of-way on section line to provide access to isolated lands. Project funds to come from inheritance fund.																		
ESTIMATED COST (in Thousands) ★ OPTIONAL	★ COUNTY 15	★ CITY	★ STATE	★ FEDERAL	★ OTHER	TOTAL 15												
Project Length: (Nearest Tenth, State Unit of Measure) 0.3 Mile				Project No.: C40(375)														
Signature:		Title: Hall County Surveyor		Date: January 25, 2010														

Board of Public Roads Classifications and Standards
Form 9 Summary of Six-Year Plan

Six-Year Period Ending: December 31, 2016

Sheet 1 of 1

County: C40 - Hall County		City:		Village:	
PRIORITY NUMBER	PROJECT NUMBER	LENGTH (Nearest Tenth)	UNIT OF MEASURE	ESTIMATED COST (Thousands)	REMARKS
1	C40(373)	0.1	MILE	250	FED AID PROJECT
2	C40(398)	4.0	MILE	500	STATE AID PRJCT.
3	C40(390)	0.1	MILE	250	FED AID PROJECT
4	C40(376)	0.1	MILE	70	LOCAL PROJECT
5	C40(387)	0.1	MILE	40	LOCAL PROJECT
6	C40(391)	0.1	MILE	200	FED AID PROJECT
7	C40(369)	0.1	MILE	280	FED AID PROJECT
8	C40(367)	0.1	MILE	200	FED AID PROJECT
9	C40(261)-3	2.0	MILE	400	LOCAL PROJECT
10	C40(300)-2	2.0	MILE	400	LOCAL PROJECT
11	C40(127)-3	3.0	MILE	600	FED AID PROJECT
12	C40(121)	4.0	MILE	20	RIGHT-OF-WAY
13	C40(333)	0.5	MILE	260	FED AID PROJECT
14	C40(389)	0.1	MILE	200	FED AID PROJECT
15	C40(372)	0.1	MILE	200	FED AID PROJECT
16	C40(371)	0.1	MILE	260	FED AID PROJECT
17	C40(393)	0.1	MILE	250	FED AID PROJECT
18	C40(135)	0.5	MILE	122	LOCAL PROJECT
19	C40(133)	0.5	MILE	150	LOCAL PROJECT
20	C40(378)	0.1	MILE	65	LOCAL PROJECT
21	C40(379)	0.1	MILE	65	LOCAL PROJECT
22	C40(392)	0.1	MILE	300	FED AID PROJECT
23	C40(171)-1	0.1	MILE	276	FED AID PROJECT
24	C40(121)-2	4.0	MILE	800	FED AID PROJECT
			TOTAL	6.158 M	
Signature: <i>Barry C. Shuck</i>			Title: Hall County Surveyor		Date: January 25, 2010

Board of Public Roads Classifications and Standards
Form 7 One- and Six-Year Plan
Highway or Street Improvement Project

County: C-40 Hall County	City:	Village:																
Location Description: Intersection of Englemand Road, Airport Road and Nebr. State Hwy. No. 2. Section 2, T 11 N, R 10 W County mile: 18T, 37J, & 37H																		
Existing Surface Type and Structures: (Such as dirt, gravel, asphalt, concrete, culvert, or bridge) Asphalt and Steel Girder Bridge																		
Average Daily Traffic: 2008 = 1000, 2028 = 1500		Classification Type: (As shown on Functional Classification Map) Other Arterial																
PROPOSED IMPROVEMENT																		
Design Standard Number: DR-5	Surfacing	Thickness: 6" Width: 24'																
<table style="width: 100%; border: none;"> <tr> <td><input checked="" type="checkbox"/> Grading</td> <td><input checked="" type="checkbox"/> Concrete</td> <td><input checked="" type="checkbox"/> Right of Way</td> <td><input type="checkbox"/> Lighting</td> </tr> <tr> <td><input type="checkbox"/> Aggregate</td> <td><input type="checkbox"/> Curb & Gutter</td> <td><input type="checkbox"/> Utility Adjustments</td> <td>.....</td> </tr> <tr> <td><input type="checkbox"/> Armor Coat</td> <td><input checked="" type="checkbox"/> Drainage Structures</td> <td><input type="checkbox"/> Fencing</td> <td>.....</td> </tr> <tr> <td><input checked="" type="checkbox"/> Asphalt</td> <td><input type="checkbox"/> Erosion Control</td> <td><input type="checkbox"/> Sidewalks</td> <td>.....</td> </tr> </table>			<input checked="" type="checkbox"/> Grading	<input checked="" type="checkbox"/> Concrete	<input checked="" type="checkbox"/> Right of Way	<input type="checkbox"/> Lighting	<input type="checkbox"/> Aggregate	<input type="checkbox"/> Curb & Gutter	<input type="checkbox"/> Utility Adjustments	<input type="checkbox"/> Armor Coat	<input checked="" type="checkbox"/> Drainage Structures	<input type="checkbox"/> Fencing	<input checked="" type="checkbox"/> Asphalt	<input type="checkbox"/> Erosion Control	<input type="checkbox"/> Sidewalks
<input checked="" type="checkbox"/> Grading	<input checked="" type="checkbox"/> Concrete	<input checked="" type="checkbox"/> Right of Way	<input type="checkbox"/> Lighting															
<input type="checkbox"/> Aggregate	<input type="checkbox"/> Curb & Gutter	<input type="checkbox"/> Utility Adjustments															
<input type="checkbox"/> Armor Coat	<input checked="" type="checkbox"/> Drainage Structures	<input type="checkbox"/> Fencing															
<input checked="" type="checkbox"/> Asphalt	<input type="checkbox"/> Erosion Control	<input type="checkbox"/> Sidewalks															
Bridge to Remain in Place	Roadway Width:	Length: Type:																
New Bridge	Roadway Width: 30'	Length: 65' Type: Conc. Slab																
Box Culvert	Span: Rise:	Length: Type:																
Culvert	Diameter:	Length: Type:																
Bridges and Culverts Sized	<input type="checkbox"/> Yes <input type="checkbox"/> N/A <input checked="" type="checkbox"/> Hydraulic Analysis Pending																	
Other Construction Features: Replace 25.5' X 50' Steel Girder Bridge with 30' X 65' triple span prestressed concrete slab bridge. Construct 90° intersection of Engleman Road and Airport Road with Nebr. State Hwy. No. 2 C004012115																		
ESTIMATED COST (in Thousands) ★ OPTIONAL	★ COUNTY 25	★ CITY	★ STATE 25	★ FEDERAL 200	★ OTHER	TOTAL 250												
Project Length: (Nearest Tenth, State Unit of Measure) 0.1 Mile			Project No.: C40(373)															
Signature:		Title: Hall County Surveyor		Date: January 25, 2010														

Board of Public Roads Classifications and Standards
Form 7 One- and Six-Year Plan
Highway or Street Improvement Project

County: C40 - Hall County	City:	Village:																
Location Description: On a north and South road beginning at the Southeast corner of Section 25, T 9 N, R 11 W; thence North 5.5 miles to the South side of Interstate No. 80 at the Alda Interchange, Hall County, Nebraska Alda Road Miles 26B, 26C, 26D, 26E, 26F, & 26G																		
Existing Surface Type and Structures: (Such as dirt, gravel, asphalt, concrete, culvert, or bridge) Asphalt																		
Average Daily Traffic: 2010 = 953, 2030 = 1250		Classification Type: (As shown on Functional Classification Map) Other Arterial																
PROPOSED IMPROVEMENT																		
Design Standard Number: ROA-1	Surfacing	Thickness: 3" Width: 24'																
<table style="width: 100%; border: none;"> <tr> <td><input checked="" type="checkbox"/> Grading</td> <td><input type="checkbox"/> Concrete</td> <td><input type="checkbox"/> Right of Way</td> <td><input type="checkbox"/> Lighting</td> </tr> <tr> <td><input type="checkbox"/> Aggregate</td> <td><input type="checkbox"/> Curb & Gutter</td> <td><input type="checkbox"/> Utility Adjustments</td> <td><input type="checkbox"/></td> </tr> <tr> <td><input type="checkbox"/> Armor Coat</td> <td><input type="checkbox"/> Drainage Structures</td> <td><input type="checkbox"/> Fencing</td> <td><input type="checkbox"/></td> </tr> <tr> <td><input checked="" type="checkbox"/> Asphalt</td> <td><input type="checkbox"/> Erosion Control</td> <td><input type="checkbox"/> Sidewalks</td> <td><input type="checkbox"/></td> </tr> </table>			<input checked="" type="checkbox"/> Grading	<input type="checkbox"/> Concrete	<input type="checkbox"/> Right of Way	<input type="checkbox"/> Lighting	<input type="checkbox"/> Aggregate	<input type="checkbox"/> Curb & Gutter	<input type="checkbox"/> Utility Adjustments	<input type="checkbox"/>	<input type="checkbox"/> Armor Coat	<input type="checkbox"/> Drainage Structures	<input type="checkbox"/> Fencing	<input type="checkbox"/>	<input checked="" type="checkbox"/> Asphalt	<input type="checkbox"/> Erosion Control	<input type="checkbox"/> Sidewalks	<input type="checkbox"/>
<input checked="" type="checkbox"/> Grading	<input type="checkbox"/> Concrete	<input type="checkbox"/> Right of Way	<input type="checkbox"/> Lighting															
<input type="checkbox"/> Aggregate	<input type="checkbox"/> Curb & Gutter	<input type="checkbox"/> Utility Adjustments	<input type="checkbox"/>															
<input type="checkbox"/> Armor Coat	<input type="checkbox"/> Drainage Structures	<input type="checkbox"/> Fencing	<input type="checkbox"/>															
<input checked="" type="checkbox"/> Asphalt	<input type="checkbox"/> Erosion Control	<input type="checkbox"/> Sidewalks	<input type="checkbox"/>															
Bridge to Remain in Place	Roadway Width:	Length: Type:																
New Bridge	Roadway Width:	Length: Type:																
Box Culvert	Span: Rise: Length:	Type:																
Culvert	Diameter: Length:	Type:																
Bridges and Culverts Sized <input type="checkbox"/> Yes <input checked="" type="checkbox"/> N/A <input type="checkbox"/> Hydraulic Analysis Pending																		
Other Construction Features: Mill 2" of existing asphalt and overlay with 3" new asphalt. Project is to reconstruct asphalt road for Nebraska Department of Roads Detour Route due to Highway No. 11 bridge closure and construction over the Platte River.																		
ESTIMATED COST (in Thousands) ★ OPTIONAL	★ COUNTY	★ CITY	★ STATE	★ FEDERAL	★ OTHER	TOTAL												
	250	0	250	0	0	500												
Project Length: (Nearest Tenth, State Unit of Measure) 4.0 Miles			Project No.: C40(398)															
Signature:		Title: Hall County Surveyor			Date: January 25, 2010													

Board of Public Roads Classifications and Standards
Form 7 One- and Six-Year Plan
Highway or Street Improvement Project

County: C-40 Hall County	City:	Village:																
Location Description: Chapman Road between Sky Park Road and Quandt Road. 0.8 mile west of NE corner. Section 14. T-12-N. R-9-W. County Mile: 45B8																		
Existing Surface Type and Structures: (Such as dirt, gravel, asphalt, concrete, culvert, or bridge) Asphalt & Concete Slab Bridge																		
Average Daily Traffic: 2008 = 300, 2008 = 400		Classification Type: (As shown on Functional Classification Map) Other Arterial																
PROPOSED IMPROVEMENT																		
Design Standard Number: ROA2	Surfacing	Thickness: 6" Width: 24'																
<table style="width: 100%; border: none;"> <tr> <td><input type="checkbox"/> Grading</td> <td><input type="checkbox"/> Concrete</td> <td><input type="checkbox"/> Right of Way</td> <td><input type="checkbox"/> Lighting</td> </tr> <tr> <td><input type="checkbox"/> Aggregate</td> <td><input type="checkbox"/> Curb & Gutter</td> <td><input type="checkbox"/> Utility Adjustments</td> <td><input type="checkbox"/></td> </tr> <tr> <td><input type="checkbox"/> Armor Coat</td> <td><input checked="" type="checkbox"/> Drainage Structures</td> <td><input checked="" type="checkbox"/> Fencing</td> <td><input type="checkbox"/></td> </tr> <tr> <td><input checked="" type="checkbox"/> Asphalt</td> <td><input checked="" type="checkbox"/> Erosion Control</td> <td><input type="checkbox"/> Sidewalks</td> <td><input type="checkbox"/></td> </tr> </table>			<input type="checkbox"/> Grading	<input type="checkbox"/> Concrete	<input type="checkbox"/> Right of Way	<input type="checkbox"/> Lighting	<input type="checkbox"/> Aggregate	<input type="checkbox"/> Curb & Gutter	<input type="checkbox"/> Utility Adjustments	<input type="checkbox"/>	<input type="checkbox"/> Armor Coat	<input checked="" type="checkbox"/> Drainage Structures	<input checked="" type="checkbox"/> Fencing	<input type="checkbox"/>	<input checked="" type="checkbox"/> Asphalt	<input checked="" type="checkbox"/> Erosion Control	<input type="checkbox"/> Sidewalks	<input type="checkbox"/>
<input type="checkbox"/> Grading	<input type="checkbox"/> Concrete	<input type="checkbox"/> Right of Way	<input type="checkbox"/> Lighting															
<input type="checkbox"/> Aggregate	<input type="checkbox"/> Curb & Gutter	<input type="checkbox"/> Utility Adjustments	<input type="checkbox"/>															
<input type="checkbox"/> Armor Coat	<input checked="" type="checkbox"/> Drainage Structures	<input checked="" type="checkbox"/> Fencing	<input type="checkbox"/>															
<input checked="" type="checkbox"/> Asphalt	<input checked="" type="checkbox"/> Erosion Control	<input type="checkbox"/> Sidewalks	<input type="checkbox"/>															
Bridge to Remain in Place	Roadway Width:	Length: Type:																
New Bridge	Roadway Width: 24'	Length: 60' Type: concrete steel																
Box Culvert	Span: Rise:	Length: Type:																
Culvert	Diameter:	Length: Type:																
Bridges and Culverts Sized	<input type="checkbox"/> Yes <input type="checkbox"/> N/A <input checked="" type="checkbox"/> Hydraulic Analysis Pending																	
Other Construction Features: Replace 54' concrete slab bridge C004000610 Bridge built in 1961																		
ESTIMATED COST (in Thousands) ★ OPTIONAL	★ COUNTY	★ CITY	★ STATE	★ FEDERAL	★ OTHER	TOTAL												
	25		25	200		250												
Project Length: (Nearest Tenth, State Unit of Measure) 0.1			Project No.: C40(390)															
Signature:		Title:		Date:														
		Hall County Surveyor		January 25, 2010														

Board of Public Roads Classifications and Standards
Form 7 One- and Six-Year Plan
Highway or Street Improvement Project

County: C-40 Hall County	City:	Village:																
Location Description: Schauppsville Road between Capital Avenue and 13 th Street. Section 11, T 11 N, R 11 W. County mile: 30S 04																		
Existing Surface Type and Structures: (Such as dirt, gravel, asphalt, concrete, culvert, or bridge) Gravel and I-beam bridge																		
Average Daily Traffic: 2008 = 175, 2028 = 225		Classification Type: (As shown on Functional Classification Map) Collector																
PROPOSED IMPROVEMENT																		
Design Standard Number: RC-2	Surfacing	Thickness: 2" Width: 20'																
<table style="width: 100%; border: none;"> <tr> <td><input checked="" type="checkbox"/> Grading</td> <td><input type="checkbox"/> Concrete</td> <td><input type="checkbox"/> Right of Way</td> <td><input type="checkbox"/> Lighting</td> </tr> <tr> <td><input checked="" type="checkbox"/> Aggregate</td> <td><input type="checkbox"/> Curb & Gutter</td> <td><input type="checkbox"/> Utility Adjustments</td> <td><input type="checkbox"/></td> </tr> <tr> <td><input type="checkbox"/> Armor Coat</td> <td><input checked="" type="checkbox"/> Drainage Structures</td> <td><input type="checkbox"/> Fencing</td> <td><input type="checkbox"/></td> </tr> <tr> <td><input type="checkbox"/> Asphalt</td> <td><input type="checkbox"/> Erosion Control</td> <td><input type="checkbox"/> Sidewalks</td> <td><input type="checkbox"/></td> </tr> </table>			<input checked="" type="checkbox"/> Grading	<input type="checkbox"/> Concrete	<input type="checkbox"/> Right of Way	<input type="checkbox"/> Lighting	<input checked="" type="checkbox"/> Aggregate	<input type="checkbox"/> Curb & Gutter	<input type="checkbox"/> Utility Adjustments	<input type="checkbox"/>	<input type="checkbox"/> Armor Coat	<input checked="" type="checkbox"/> Drainage Structures	<input type="checkbox"/> Fencing	<input type="checkbox"/>	<input type="checkbox"/> Asphalt	<input type="checkbox"/> Erosion Control	<input type="checkbox"/> Sidewalks	<input type="checkbox"/>
<input checked="" type="checkbox"/> Grading	<input type="checkbox"/> Concrete	<input type="checkbox"/> Right of Way	<input type="checkbox"/> Lighting															
<input checked="" type="checkbox"/> Aggregate	<input type="checkbox"/> Curb & Gutter	<input type="checkbox"/> Utility Adjustments	<input type="checkbox"/>															
<input type="checkbox"/> Armor Coat	<input checked="" type="checkbox"/> Drainage Structures	<input type="checkbox"/> Fencing	<input type="checkbox"/>															
<input type="checkbox"/> Asphalt	<input type="checkbox"/> Erosion Control	<input type="checkbox"/> Sidewalks	<input type="checkbox"/>															
Bridge to Remain in Place	Roadway Width:	Length: Type:																
New Bridge	Roadway Width: 30'	Length: 30' Type: Conc. Slab																
Box Culvert	Span: Rise: Length:	Type:																
Culvert	Diameter: Length:	Type:																
Bridges and Culverts Sized	<input type="checkbox"/> Yes <input type="checkbox"/> N/A <input checked="" type="checkbox"/> Hydraulic Analysis Pending																	
Other Construction Features: Replace 33' X 18.5' - 15" I-beam bridge with 30' X 30' prestressed concrete slab bridge. C004012115																		
ESTIMATED COST (in Thousands) ★ OPTIONAL	★ COUNTY 70	★ CITY	★ STATE	★ FEDERAL	★ OTHER	TOTAL 70												
Project Length: (Nearest Tenth, State Unit of Measure) 0.1 Mile				Project No.: C40(376)														
Signature:		Title: Hall County Surveyor		Date: January 25, 2010														

Board of Public Roads Classifications and Standards
Form 7 One- and Six-Year Plan
Highway or Street Improvement Project

County: C-40 Hall County	City:	Village:
Location Description: Old Potash highway between 150 th Road and Highway 11. 0.3 mile west of NE corner Section 24. T-11-N, R-12-W.		
County Mile: 31U3		
Existing Surface Type and Structures: (Such as dirt, gravel, asphalt, concrete, culvert, or bridge) Gravel, steel bridge		
Average Daily Traffic: 2008 = 100, 2008 = 125		Classification Type: (As shown on Functional Classification Map) Local
PROPOSED IMPROVEMENT		
Design Standard Number: RL-2	Surfacing	Thickness: Width:
<input checked="" type="checkbox"/> Grading <input type="checkbox"/> Concrete <input type="checkbox"/> Right of Way <input type="checkbox"/> Lighting <input checked="" type="checkbox"/> Aggregate <input type="checkbox"/> Curb & Gutter <input type="checkbox"/> Utility Adjustments <input type="checkbox"/> <input type="checkbox"/> Armor Coat <input checked="" type="checkbox"/> Drainage Structures <input type="checkbox"/> Fencing <input type="checkbox"/> <input type="checkbox"/> Asphalt <input type="checkbox"/> Erosion Control <input type="checkbox"/> Sidewalks <input type="checkbox"/>		
Bridge to Remain in Place	Roadway Width:	Length: Type:
New Bridge	Roadway Width:	Length: Type:
Box Culvert	Span: 8' Rise: 6' Length: 40'	Type: Twin CBC
Culvert	Diameter:	Length: Type:
Bridges and Culverts Sized	<input type="checkbox"/> Yes <input type="checkbox"/> N/A <input checked="" type="checkbox"/> Hydraulic Analysis Pending	
Other Construction Features: Replace steel 13.5' I Beam bridge with concrete box culvert. 8' x 6' x 40' twin, pre-cast. bridge built in 1927		
ESTIMATED COST (in Thousands) ★ OPTIONAL	★ COUNTY 40	★ CITY
	★ STATE	★ FEDERAL
	★ OTHER	TOTAL 40
Project Length: (Nearest Tenth, State Unit of Measure) 0.1		Project No.: C40(387)
Signature:		Title: Hall County Surveyor Date: January 25, 2010

Board of Public Roads Classifications and Standards
Form 7 One- and Six-Year Plan
Highway or Street Improvement Project

County: C-40 Hall County	City:	Village:																
Location Description: Old Potash Highway between Cameron Road and McGuire Road. 0.9 mile west of the NE corner. Section 22. T-11-N. R-12-W. County Mile: 31W09																		
Existing Surface Type and Structures: <i>(Such as dirt, gravel, asphalt, concrete, culvert, or bridge)</i> Gravel, concrete box I beam bridge combination.																		
Average Daily Traffic: 2008 = 100, 2008 = 125		Classification Type: <i>(As shown on Functional Classification Map)</i> Local																
PROPOSED IMPROVEMENT																		
Design Standard Number: RL2	Surfacing	Thickness: 2" Width: 24'																
<table style="width: 100%; border: none;"> <tr> <td><input checked="" type="checkbox"/> Grading</td> <td><input type="checkbox"/> Concrete</td> <td><input checked="" type="checkbox"/> Right of Way</td> <td><input type="checkbox"/> Lighting</td> </tr> <tr> <td><input checked="" type="checkbox"/> Aggregate</td> <td><input type="checkbox"/> Curb & Gutter</td> <td><input type="checkbox"/> Utility Adjustments</td> <td>.....</td> </tr> <tr> <td><input type="checkbox"/> Armor Coat</td> <td><input checked="" type="checkbox"/> Drainage Structures</td> <td><input checked="" type="checkbox"/> Fencing</td> <td>.....</td> </tr> <tr> <td><input type="checkbox"/> Asphalt</td> <td><input checked="" type="checkbox"/> Erosion Control</td> <td><input type="checkbox"/> Sidewalks</td> <td>.....</td> </tr> </table>			<input checked="" type="checkbox"/> Grading	<input type="checkbox"/> Concrete	<input checked="" type="checkbox"/> Right of Way	<input type="checkbox"/> Lighting	<input checked="" type="checkbox"/> Aggregate	<input type="checkbox"/> Curb & Gutter	<input type="checkbox"/> Utility Adjustments	<input type="checkbox"/> Armor Coat	<input checked="" type="checkbox"/> Drainage Structures	<input checked="" type="checkbox"/> Fencing	<input type="checkbox"/> Asphalt	<input checked="" type="checkbox"/> Erosion Control	<input type="checkbox"/> Sidewalks
<input checked="" type="checkbox"/> Grading	<input type="checkbox"/> Concrete	<input checked="" type="checkbox"/> Right of Way	<input type="checkbox"/> Lighting															
<input checked="" type="checkbox"/> Aggregate	<input type="checkbox"/> Curb & Gutter	<input type="checkbox"/> Utility Adjustments															
<input type="checkbox"/> Armor Coat	<input checked="" type="checkbox"/> Drainage Structures	<input checked="" type="checkbox"/> Fencing															
<input type="checkbox"/> Asphalt	<input checked="" type="checkbox"/> Erosion Control	<input type="checkbox"/> Sidewalks															
Bridge to Remain in Place	Roadway Width:	Length: Type:																
New Bridge	Roadway Width: 24'	Length: 42' Type: concrete steel																
Box Culvert	Span: Rise:	Length: Type:																
Culvert	Diameter:	Length: Type:																
Bridges and Culverts Sized	<input type="checkbox"/> Yes <input type="checkbox"/> N/A <input checked="" type="checkbox"/> Hydraulic Analysis Pending																	
Other Construction Features: Replace 41' concrete box and steel I beam combination bridge C004002005 Bridge built in 1928 and 1942																		
ESTIMATED COST <i>(in Thousands)</i> ★ OPTIONAL	★ COUNTY 20	★ CITY	★ STATE 20	★ FEDERAL 160	★ OTHER	TOTAL 200												
Project Length: <i>(Nearest Tenth, State Unit of Measure)</i> 0.1 mile			Project No.: C40(391)															
Signature:		Title: Hall County Surveyor		Date: January 25, 2010														

Board of Public Roads Classifications and Standards
Form 7 One- and Six-Year Plan
Highway or Street Improvement Project

County: C-40 Hall County	City:	Village:																
Location Description: 150 th Road between Schultz Road and Wood River Road. Section 24, T 10 N, R 12 W County mile: 40J 06																		
Existing Surface Type and Structures: (Such as dirt, gravel, asphalt, concrete, culvert, or bridge) Gravel and Thru Truss Bridge																		
Average Daily Traffic: 2008 = 75, 2028 = 150		Classification Type: (As shown on Functional Classification Map) Local																
PROPOSED IMPROVEMENT																		
Design Standard Number: RL-2	Surfacing	Thickness: 2" Width: 20'																
<table style="width: 100%; border: none;"> <tr> <td><input checked="" type="checkbox"/> Grading</td> <td><input type="checkbox"/> Concrete</td> <td><input type="checkbox"/> Right of Way</td> <td><input type="checkbox"/> Lighting</td> </tr> <tr> <td><input checked="" type="checkbox"/> Aggregate</td> <td><input type="checkbox"/> Curb & Gutter</td> <td><input type="checkbox"/> Utility Adjustments</td> <td><input type="checkbox"/></td> </tr> <tr> <td><input type="checkbox"/> Armor Coat</td> <td><input checked="" type="checkbox"/> Drainage Structures</td> <td><input type="checkbox"/> Fencing</td> <td><input type="checkbox"/></td> </tr> <tr> <td><input type="checkbox"/> Asphalt</td> <td><input type="checkbox"/> Erosion Control</td> <td><input type="checkbox"/> Sidewalks</td> <td><input type="checkbox"/></td> </tr> </table>			<input checked="" type="checkbox"/> Grading	<input type="checkbox"/> Concrete	<input type="checkbox"/> Right of Way	<input type="checkbox"/> Lighting	<input checked="" type="checkbox"/> Aggregate	<input type="checkbox"/> Curb & Gutter	<input type="checkbox"/> Utility Adjustments	<input type="checkbox"/>	<input type="checkbox"/> Armor Coat	<input checked="" type="checkbox"/> Drainage Structures	<input type="checkbox"/> Fencing	<input type="checkbox"/>	<input type="checkbox"/> Asphalt	<input type="checkbox"/> Erosion Control	<input type="checkbox"/> Sidewalks	<input type="checkbox"/>
<input checked="" type="checkbox"/> Grading	<input type="checkbox"/> Concrete	<input type="checkbox"/> Right of Way	<input type="checkbox"/> Lighting															
<input checked="" type="checkbox"/> Aggregate	<input type="checkbox"/> Curb & Gutter	<input type="checkbox"/> Utility Adjustments	<input type="checkbox"/>															
<input type="checkbox"/> Armor Coat	<input checked="" type="checkbox"/> Drainage Structures	<input type="checkbox"/> Fencing	<input type="checkbox"/>															
<input type="checkbox"/> Asphalt	<input type="checkbox"/> Erosion Control	<input type="checkbox"/> Sidewalks	<input type="checkbox"/>															
Bridge to Remain in Place	Roadway Width:	Length: Type:																
New Bridge	Roadway Width: 30'	Length: 80' Type: Conc. Slab																
Box Culvert	Span: Rise:	Length: Type:																
Culvert	Diameter:	Length: Type:																
Bridges and Culverts Sized	<input type="checkbox"/> Yes <input type="checkbox"/> N/A <input checked="" type="checkbox"/> Hydraulic Analysis Pending																	
Other Construction Features: Replace 83' thru truss bridge with 80' X 30' prestressed concrete slab bridge. C004011115																		
ESTIMATED COST (In Thousands) ★ OPTIONAL	★ COUNTY 28	★ CITY	★ STATE 28	★ FEDERAL 224	★ OTHER	TOTAL 280												
Project Length: (Nearest Tenth, State Unit of Measure) 0.1 Mile			Project No.: C40(369)															
Signature:		Title: Hall County Surveyor		Date: January 25, 2010														

Board of Public Roads Classifications and Standards
Form 7 One- and Six-Year Plan
Highway or Street Improvement Project

County: C-40 Hall County	City:	Village:																
Location Description: 190 th Road between Old Military Road and Holling Road. Section 32, T 10 N, R 12 W. County mile: 48G 08																		
Existing Surface Type and Structures: (Such as dirt, gravel, asphalt, concrete, culvert, or bridge) Gravel and Thru Truss Bridge																		
Average Daily Traffic: 2008 = 75, 2028 = 175		Classification Type: (As shown on Functional Classification Map) Local																
PROPOSED IMPROVEMENT																		
Design Standard Number: RL-2	Surfacing	Thickness: 2" Width: 20'																
<table style="width: 100%; border: none;"> <tr> <td><input checked="" type="checkbox"/> Grading</td> <td><input type="checkbox"/> Concrete</td> <td><input type="checkbox"/> Right of Way</td> <td><input type="checkbox"/> Lighting</td> </tr> <tr> <td><input checked="" type="checkbox"/> Aggregate</td> <td><input type="checkbox"/> Curb & Gutter</td> <td><input type="checkbox"/> Utility Adjustments</td> <td><input type="checkbox"/></td> </tr> <tr> <td><input type="checkbox"/> Armor Coat</td> <td><input checked="" type="checkbox"/> Drainage Structures</td> <td><input type="checkbox"/> Fencing</td> <td><input type="checkbox"/></td> </tr> <tr> <td><input type="checkbox"/> Asphalt</td> <td><input type="checkbox"/> Erosion Control</td> <td><input type="checkbox"/> Sidewalks</td> <td><input type="checkbox"/></td> </tr> </table>			<input checked="" type="checkbox"/> Grading	<input type="checkbox"/> Concrete	<input type="checkbox"/> Right of Way	<input type="checkbox"/> Lighting	<input checked="" type="checkbox"/> Aggregate	<input type="checkbox"/> Curb & Gutter	<input type="checkbox"/> Utility Adjustments	<input type="checkbox"/>	<input type="checkbox"/> Armor Coat	<input checked="" type="checkbox"/> Drainage Structures	<input type="checkbox"/> Fencing	<input type="checkbox"/>	<input type="checkbox"/> Asphalt	<input type="checkbox"/> Erosion Control	<input type="checkbox"/> Sidewalks	<input type="checkbox"/>
<input checked="" type="checkbox"/> Grading	<input type="checkbox"/> Concrete	<input type="checkbox"/> Right of Way	<input type="checkbox"/> Lighting															
<input checked="" type="checkbox"/> Aggregate	<input type="checkbox"/> Curb & Gutter	<input type="checkbox"/> Utility Adjustments	<input type="checkbox"/>															
<input type="checkbox"/> Armor Coat	<input checked="" type="checkbox"/> Drainage Structures	<input type="checkbox"/> Fencing	<input type="checkbox"/>															
<input type="checkbox"/> Asphalt	<input type="checkbox"/> Erosion Control	<input type="checkbox"/> Sidewalks	<input type="checkbox"/>															
Bridge to Remain in Place	Roadway Width:	Length: Type:																
New Bridge	Roadway Width: 30'	Length: 60' Type: Conc. Slab																
Box Culvert	Span: Rise:	Length: Type:																
Culvert	Diameter:	Length: Type:																
Bridges and Culverts Sized	<input type="checkbox"/> Yes <input type="checkbox"/> N/A <input checked="" type="checkbox"/> Hydraulic Analysis Pending																	
Other Construction Features: Replace 61' thru truss bridge with 60' X 30' prestressed concrete slab bridge. C004000310																		
ESTIMATED COST (in Thousands) ★ OPTIONAL	★ COUNTY 20	★ CITY 	★ STATE 20	★ FEDERAL 160	★ OTHER 	TOTAL 200												
Project Length: (Nearest Tenth, State Unit of Measure) 0.1 Mile			Project No.: C40(367)															
Signature:		Title: Hall County Surveyor		Date: January 25, 2010														

Board of Public Roads Classifications and Standards
Form 7 One- and Six-Year Plan
Highway or Street Improvement Project

County: C40 - Hall County	City:	Village:																
Location Description: On a north and south road beginning at the southeast corner of Section 25, T-12-N, R-10-W; thence northerly 2 miles to One-R School. Webb Road 14 V & W																		
Existing Surface Type and Structures: <i>(Such as dirt, gravel, asphalt, concrete, culvert, or bridge)</i> Gravel and culverts																		
Average Daily Traffic: 2008 = 410, 2028 = 735		Classification Type: <i>(As shown on Functional Classification Map)</i> Local																
PROPOSED IMPROVEMENT																		
Design Standard Number: RL-2	Surfacing	Thickness: 0.4 Width: 24.0																
<table style="width: 100%; border: none;"> <tr> <td><input checked="" type="checkbox"/> Grading</td> <td><input type="checkbox"/> Concrete</td> <td><input type="checkbox"/> Right of Way</td> <td><input type="checkbox"/> Lighting</td> </tr> <tr> <td><input type="checkbox"/> Aggregate</td> <td><input type="checkbox"/> Curb & Gutter</td> <td><input type="checkbox"/> Utility Adjustments</td> <td><input type="checkbox"/></td> </tr> <tr> <td><input type="checkbox"/> Armor Coat</td> <td><input type="checkbox"/> Drainage Structures</td> <td><input type="checkbox"/> Fencing</td> <td><input type="checkbox"/></td> </tr> <tr> <td><input checked="" type="checkbox"/> Asphalt</td> <td><input type="checkbox"/> Erosion Control</td> <td><input type="checkbox"/> Sidewalks</td> <td><input type="checkbox"/></td> </tr> </table>			<input checked="" type="checkbox"/> Grading	<input type="checkbox"/> Concrete	<input type="checkbox"/> Right of Way	<input type="checkbox"/> Lighting	<input type="checkbox"/> Aggregate	<input type="checkbox"/> Curb & Gutter	<input type="checkbox"/> Utility Adjustments	<input type="checkbox"/>	<input type="checkbox"/> Armor Coat	<input type="checkbox"/> Drainage Structures	<input type="checkbox"/> Fencing	<input type="checkbox"/>	<input checked="" type="checkbox"/> Asphalt	<input type="checkbox"/> Erosion Control	<input type="checkbox"/> Sidewalks	<input type="checkbox"/>
<input checked="" type="checkbox"/> Grading	<input type="checkbox"/> Concrete	<input type="checkbox"/> Right of Way	<input type="checkbox"/> Lighting															
<input type="checkbox"/> Aggregate	<input type="checkbox"/> Curb & Gutter	<input type="checkbox"/> Utility Adjustments	<input type="checkbox"/>															
<input type="checkbox"/> Armor Coat	<input type="checkbox"/> Drainage Structures	<input type="checkbox"/> Fencing	<input type="checkbox"/>															
<input checked="" type="checkbox"/> Asphalt	<input type="checkbox"/> Erosion Control	<input type="checkbox"/> Sidewalks	<input type="checkbox"/>															
Bridge to Remain in Place	Roadway Width:	Length: Type:																
New Bridge	Roadway Width:	Length: Type:																
Box Culvert	Span: Rise:	Length: Type:																
Culvert	Diameter:	Length: Type:																
Bridges and Culverts Sized	<input type="checkbox"/> Yes <input type="checkbox"/> N/A <input type="checkbox"/> Hydraulic Analysis Pending																	
Other Construction Features: 5" x 24' Asphalt																		
ESTIMATED COST <i>(in Thousands)</i> ★ OPTIONAL	★ COUNTY 400	★ CITY 																
	★ STATE 	★ FEDERAL 																
	★ OTHER 	TOTAL 400																
Project Length: <i>(Nearest Tenth, State Unit of Measure)</i> 2.0 miles		Project No.: C40(261)-3																
Signature:	Title: Hall County Surveyor	Date: January 25, 2010																

Board of Public Roads Classifications and Standards
Form 7 One- and Six-Year Plan
Highway or Street Improvement Project

County: C40 - Hall County	City:	Village:																		
Location Description: On a north and south road beginning at the intersection of Engleman Road and Abbott Road; thence 1 mile north. Engleman Road 18 V & 18 W																				
Existing Surface Type and Structures: <i>(Such as dirt, gravel, asphalt, concrete, culvert, or bridge)</i> Gravel and bridge																				
Average Daily Traffic: 2008 = 200, 2028 = 400		Classification Type: <i>(As shown on Functional Classification Map)</i> Local																		
PROPOSED IMPROVEMENT																				
Design Standard Number: RL-1	Surfacing	Thickness: 0.4 Width: 24.0																		
<table style="width: 100%; border: none;"> <tr> <td><input checked="" type="checkbox"/> Grading</td> <td><input type="checkbox"/> Concrete</td> <td><input type="checkbox"/> Right of Way</td> <td><input type="checkbox"/> Lighting</td> </tr> <tr> <td><input type="checkbox"/> Aggregate</td> <td><input type="checkbox"/> Curb & Gutter</td> <td><input type="checkbox"/> Utility Adjustments</td> <td><input type="checkbox"/></td> </tr> <tr> <td><input type="checkbox"/> Armor Coat</td> <td><input type="checkbox"/> Drainage Structures</td> <td><input type="checkbox"/> Fencing</td> <td><input type="checkbox"/></td> </tr> <tr> <td><input checked="" type="checkbox"/> Asphalt</td> <td><input type="checkbox"/> Erosion Control</td> <td><input type="checkbox"/> Sidewalks</td> <td><input type="checkbox"/></td> </tr> </table>			<input checked="" type="checkbox"/> Grading	<input type="checkbox"/> Concrete	<input type="checkbox"/> Right of Way	<input type="checkbox"/> Lighting	<input type="checkbox"/> Aggregate	<input type="checkbox"/> Curb & Gutter	<input type="checkbox"/> Utility Adjustments	<input type="checkbox"/>	<input type="checkbox"/> Armor Coat	<input type="checkbox"/> Drainage Structures	<input type="checkbox"/> Fencing	<input type="checkbox"/>	<input checked="" type="checkbox"/> Asphalt	<input type="checkbox"/> Erosion Control	<input type="checkbox"/> Sidewalks	<input type="checkbox"/>		
<input checked="" type="checkbox"/> Grading	<input type="checkbox"/> Concrete	<input type="checkbox"/> Right of Way	<input type="checkbox"/> Lighting																	
<input type="checkbox"/> Aggregate	<input type="checkbox"/> Curb & Gutter	<input type="checkbox"/> Utility Adjustments	<input type="checkbox"/>																	
<input type="checkbox"/> Armor Coat	<input type="checkbox"/> Drainage Structures	<input type="checkbox"/> Fencing	<input type="checkbox"/>																	
<input checked="" type="checkbox"/> Asphalt	<input type="checkbox"/> Erosion Control	<input type="checkbox"/> Sidewalks	<input type="checkbox"/>																	
Bridge to Remain in Place	Roadway Width:	Length: Type:																		
New Bridge	Roadway Width:	Length: Type:																		
Box Culvert	Span: Rise: Length:	Type:																		
Culvert	Diameter: Length:	Type:																		
Bridges and Culverts Sized	<input type="checkbox"/> Yes <input type="checkbox"/> N/A <input type="checkbox"/> Hydraulic Analysis Pending																			
Other Construction Features: Asphalt Surfacing 5 1/2" x 24'																				
<table border="1" style="width: 100%; border-collapse: collapse;"> <tr> <th style="width: 15%;">ESTIMATED COST <i>(in Thousands)</i></th> <th style="width: 12.5%;">★ COUNTY</th> <th style="width: 12.5%;">★ CITY</th> <th style="width: 12.5%;">★ STATE</th> <th style="width: 12.5%;">★ FEDERAL</th> <th style="width: 12.5%;">★ OTHER</th> <th style="width: 12.5%;">TOTAL</th> </tr> <tr> <td>★ OPTIONAL</td> <td>400</td> <td></td> <td></td> <td></td> <td></td> <td>400</td> </tr> </table>							ESTIMATED COST <i>(in Thousands)</i>	★ COUNTY	★ CITY	★ STATE	★ FEDERAL	★ OTHER	TOTAL	★ OPTIONAL	400					400
ESTIMATED COST <i>(in Thousands)</i>	★ COUNTY	★ CITY	★ STATE	★ FEDERAL	★ OTHER	TOTAL														
★ OPTIONAL	400					400														
Project Length: <i>(Nearest Tenth, State Unit of Measure)</i> 2.0 miles				Project No.: C40(300)-2																
Signature:		Title: Hall County Surveyor			Date: January 25, 2010															

Board of Public Roads Classifications and Standards
Form 7 One- and Six-Year Plan
Highway or Street Improvement Project

County: C40 - Hall County	City:	Village:																
Location Description: Beginning at the northeast corner of Section 21, T-9-N, R-9-W; thence southerly 3 miles to the southwest corner of Section 34, T-9-N-, R-9-W of the 6 th P.M., Hall County, NE South Locust Street 8 A, B, & C																		
Existing Surface Type and Structures: (Such as dirt, gravel, asphalt, concrete, culvert, or bridge) Gravel, culverts and bridge																		
Average Daily Traffic: 2008 = 170, 2028 = 220		Classification Type: (As shown on Functional Classification Map) Other Arterial																
PROPOSED IMPROVEMENT																		
Design Standard Number: ROA-1	Surfacing	Thickness: 0.4 Width: 24.0																
<table style="width: 100%; border: none;"> <tr> <td><input checked="" type="checkbox"/> Grading</td> <td><input type="checkbox"/> Concrete</td> <td><input type="checkbox"/> Right of Way</td> <td><input type="checkbox"/> Lighting</td> </tr> <tr> <td><input type="checkbox"/> Aggregate</td> <td><input type="checkbox"/> Curb & Gutter</td> <td><input checked="" type="checkbox"/> Utility Adjustments</td> <td><input type="checkbox"/></td> </tr> <tr> <td><input type="checkbox"/> Armor Coat</td> <td><input type="checkbox"/> Drainage Structures</td> <td><input checked="" type="checkbox"/> Fencing</td> <td><input type="checkbox"/></td> </tr> <tr> <td><input checked="" type="checkbox"/> Asphalt</td> <td><input type="checkbox"/> Erosion Control</td> <td><input type="checkbox"/> Sidewalks</td> <td><input type="checkbox"/></td> </tr> </table>			<input checked="" type="checkbox"/> Grading	<input type="checkbox"/> Concrete	<input type="checkbox"/> Right of Way	<input type="checkbox"/> Lighting	<input type="checkbox"/> Aggregate	<input type="checkbox"/> Curb & Gutter	<input checked="" type="checkbox"/> Utility Adjustments	<input type="checkbox"/>	<input type="checkbox"/> Armor Coat	<input type="checkbox"/> Drainage Structures	<input checked="" type="checkbox"/> Fencing	<input type="checkbox"/>	<input checked="" type="checkbox"/> Asphalt	<input type="checkbox"/> Erosion Control	<input type="checkbox"/> Sidewalks	<input type="checkbox"/>
<input checked="" type="checkbox"/> Grading	<input type="checkbox"/> Concrete	<input type="checkbox"/> Right of Way	<input type="checkbox"/> Lighting															
<input type="checkbox"/> Aggregate	<input type="checkbox"/> Curb & Gutter	<input checked="" type="checkbox"/> Utility Adjustments	<input type="checkbox"/>															
<input type="checkbox"/> Armor Coat	<input type="checkbox"/> Drainage Structures	<input checked="" type="checkbox"/> Fencing	<input type="checkbox"/>															
<input checked="" type="checkbox"/> Asphalt	<input type="checkbox"/> Erosion Control	<input type="checkbox"/> Sidewalks	<input type="checkbox"/>															
Bridge to Remain in Place	Roadway Width:	Length: Type:																
New Bridge	Roadway Width:	Length: Type:																
Box Culvert	Span: Rise:	Length: Type:																
Culvert	Diameter:	Length: Type:																
Bridges and Culverts Sized	<input type="checkbox"/> Yes <input type="checkbox"/> N/A <input type="checkbox"/> Hydraulic Analysis Pending																	
Other Construction Features: 5" x 24' Asphalt																		
ESTIMATED COST (in Thousands) ★ OPTIONAL	★ COUNTY 60	★ CITY 60	★ STATE 60	★ FEDERAL 480	★ OTHER 600	TOTAL 600												
Project Length: (Nearest Tenth, State Unit of Measure) 3.0 Miles			Project No.: C40(127)-3															
Signature:		Title: Hall County Surveyor		Date: January 25, 2010														

Board of Public Roads Classifications and Standards
Form 7 One- and Six-Year Plan
Highway or Street Improvement Project

County: C40 - Hall County		City:		Village:		
Location Description: On an east and west road beginning at the southwest corner of Section 13, T-12-N, R-11-W; thence easterly 4.0 miles to the southwest corner of Section 15, T-12-N, R-10-W of the 6 th P.M., Hall County, NE One-R Road Mile 43K, L, M, & N						
Existing Surface Type and Structures: (Such as dirt, gravel, asphalt, concrete, culvert, or bridge) Gravel & Culverts						
Average Daily Traffic: 2008 = 145, 2028 = 261			Classification Type: (As shown on Functional Classification Map) Other Arterial			
PROPOSED IMPROVEMENT						
Design Standard Number: ROA-3		Surfacing		Thickness: 0	Width: 0	
<input type="checkbox"/> Grading	<input type="checkbox"/> Concrete	<input checked="" type="checkbox"/> Right of Way	<input type="checkbox"/> Lighting			
<input type="checkbox"/> Aggregate	<input type="checkbox"/> Curb & Gutter	<input type="checkbox"/> Utility Adjustments	<input type="checkbox"/>			
<input type="checkbox"/> Armor Coat	<input type="checkbox"/> Drainage Structures	<input type="checkbox"/> Fencing	<input type="checkbox"/>			
<input type="checkbox"/> Asphalt	<input type="checkbox"/> Erosion Control	<input type="checkbox"/> Sidewalks	<input type="checkbox"/>			
Bridge to Remain in Place	Roadway Width:	Length:		Type:		
New Bridge	Roadway Width:	Length:		Type:		
Box Culvert	Span:	Rise:	Length:	Type:		
Culvert	Diameter:	Length:		Type:		
Bridges and Culverts Sized		<input type="checkbox"/> Yes <input type="checkbox"/> N/A <input type="checkbox"/> Hydraulic Analysis Pending				
Other Construction Features: R O W Only STPE 2170(3)						
ESTIMATED COST (in Thousands) ★ OPTIONAL	★ COUNTY 20	★ CITY	★ STATE	★ FEDERAL	★ OTHER	TOTAL 20
Project Length: (Nearest Tenth, State Unit of Measure) 4.0 Miles			Project No.: C40(121)			
Signature:		Title: Hall County Surveyor		Date: January 25, 2010		

Board of Public Roads Classifications and Standards
Form 7 One- and Six-Year Plan
Highway or Street Improvement Project

County: C40 - Hall County	City:	Village:																
Location Description: On a north and south road between Sections 15 & 16, T-10-N, R-11-W of the 6 th P.M., Hall County, NE 110 th Road 32 K 8																		
Existing Surface Type and Structures: (Such as dirt, gravel, asphalt, concrete, culvert, or bridge) Gravel																		
Average Daily Traffic: 2008 = 65, 2028 = 115		Classification Type: (As shown on Functional Classification Map) Local																
PROPOSED IMPROVEMENT																		
Design Standard Number: RL-2	Surfacing	Thickness: 0 Width: 0																
<table style="width: 100%; border: none;"> <tr> <td><input checked="" type="checkbox"/> Grading</td> <td><input type="checkbox"/> Concrete</td> <td><input type="checkbox"/> Right of Way</td> <td><input type="checkbox"/> Lighting</td> </tr> <tr> <td><input type="checkbox"/> Aggregate</td> <td><input type="checkbox"/> Curb & Gutter</td> <td><input type="checkbox"/> Utility Adjustments</td> <td><input type="checkbox"/></td> </tr> <tr> <td><input type="checkbox"/> Armor Coat</td> <td><input checked="" type="checkbox"/> Drainage Structures</td> <td><input type="checkbox"/> Fencing</td> <td><input type="checkbox"/></td> </tr> <tr> <td><input type="checkbox"/> Asphalt</td> <td><input type="checkbox"/> Erosion Control</td> <td><input type="checkbox"/> Sidewalks</td> <td><input type="checkbox"/></td> </tr> </table>			<input checked="" type="checkbox"/> Grading	<input type="checkbox"/> Concrete	<input type="checkbox"/> Right of Way	<input type="checkbox"/> Lighting	<input type="checkbox"/> Aggregate	<input type="checkbox"/> Curb & Gutter	<input type="checkbox"/> Utility Adjustments	<input type="checkbox"/>	<input type="checkbox"/> Armor Coat	<input checked="" type="checkbox"/> Drainage Structures	<input type="checkbox"/> Fencing	<input type="checkbox"/>	<input type="checkbox"/> Asphalt	<input type="checkbox"/> Erosion Control	<input type="checkbox"/> Sidewalks	<input type="checkbox"/>
<input checked="" type="checkbox"/> Grading	<input type="checkbox"/> Concrete	<input type="checkbox"/> Right of Way	<input type="checkbox"/> Lighting															
<input type="checkbox"/> Aggregate	<input type="checkbox"/> Curb & Gutter	<input type="checkbox"/> Utility Adjustments	<input type="checkbox"/>															
<input type="checkbox"/> Armor Coat	<input checked="" type="checkbox"/> Drainage Structures	<input type="checkbox"/> Fencing	<input type="checkbox"/>															
<input type="checkbox"/> Asphalt	<input type="checkbox"/> Erosion Control	<input type="checkbox"/> Sidewalks	<input type="checkbox"/>															
Bridge to Remain in Place	Roadway Width:	Length: Type:																
New Bridge	Roadway Width: 30.0	Length: 75.0 Type: Conc. Slab																
Box Culvert	Span: Rise:	Length: Type:																
Culvert	Diameter:	Length: Type:																
Bridges and Culverts Sized	<input type="checkbox"/> Yes <input type="checkbox"/> N/A <input checked="" type="checkbox"/> Hydraulic Analysis Pending																	
Other Construction Features: Replace existing 15' 4" x 51' pony truss with 30' x 75' concrete slab bridge																		
ESTIMATED COST (in Thousands) ★ OPTIONAL	★ COUNTY	★ CITY	★ STATE	★ FEDERAL	★ OTHER	TOTAL												
	26		26	208		260												
Project Length: (Nearest Tenth, State Unit of Measure) 0.5			Project No.: C40(333)															
Signature:		Title:		Date:														
		Hall County Surveyor		January 25, 2010														

Board of Public Roads Classifications and Standards
Form 7 One- and Six-Year Plan
Highway or Street Improvement Project

County: C-40 Hall County	City:	Village:				
Location Description: 13 th street between Schauppsville Road and 110 th Road 0.1 mile west of NE corner, Section 15, T-11-N, R-11-W. County Mile: 33Q1						
Existing Surface Type and Structures: (Such as dirt, gravel, asphalt, concrete, culvert, or bridge) Gravel 15" I Beam Bridge						
Average Daily Traffic: 2008 = 60, 2008 = 80		Classification Type: (As shown on Functional Classification Map) Local				
PROPOSED IMPROVEMENT						
Design Standard Number: RL2	Surfacing	Thickness: 2" Width: 20'				
<input checked="" type="checkbox"/> Grading <input type="checkbox"/> Concrete <input checked="" type="checkbox"/> Right of Way <input type="checkbox"/> Lighting <input checked="" type="checkbox"/> Aggregate <input type="checkbox"/> Curb & Gutter <input type="checkbox"/> Utility Adjustments <input type="checkbox"/> Armor Coat <input checked="" type="checkbox"/> Drainage Structures <input type="checkbox"/> Fencing <input type="checkbox"/> Asphalt <input checked="" type="checkbox"/> Erosion Control <input type="checkbox"/> Sidewalks 						
Bridge to Remain in Place	Roadway Width:	Length: Type:				
New Bridge	Roadway Width: 24'	Length: 30' Type: concrete steel				
Box Culvert	Span: Rise:	Length: Type:				
Culvert	Diameter:	Length: Type:				
Bridges and Culverts Sized	<input type="checkbox"/> Yes <input type="checkbox"/> N/A <input checked="" type="checkbox"/> Hydraulic Analysis Pending					
Other Construction Features: Replace 15" I beam bridge C004001815 Bridge built in 1931						
ESTIMATED COST (in Thousands) ★ OPTIONAL	★ COUNTY 20	★ CITY	★ STATE 20	★ FEDERAL 160	★ OTHER	TOTAL 200
Project Length: (Nearest Tenth, State Unit of Measure) 0.1				Project No.: C40(389)		
Signature:			Title: Hall County Surveyor		Date: January 25, 2010	

Board of Public Roads Classifications and Standards
Form 7 One- and Six-Year Plan
Highway or Street Improvement Project

County: C-40 Hall County	City:	Village:																
Location Description: Sky Park Road between Chapman Road and Prairie Road. Section 11, T 12 N, R 9 W. County mile: 6Y 05																		
Existing Surface Type and Structures: (Such as dirt, gravel, asphalt, concrete, culvert, or bridge) Gravel and Thru Truss Bridge																		
Average Daily Traffic: 2008 = 55, 2028 = 75		Classification Type: (As shown on Functional Classification Map) Local																
PROPOSED IMPROVEMENT																		
Design Standard Number: RL-2	Surfacing	Thickness: 2" Width: 20'																
<table style="width: 100%; border: none;"> <tr> <td><input checked="" type="checkbox"/> Grading</td> <td><input type="checkbox"/> Concrete</td> <td><input type="checkbox"/> Right of Way</td> <td><input type="checkbox"/> Lighting</td> </tr> <tr> <td><input checked="" type="checkbox"/> Aggregate</td> <td><input type="checkbox"/> Curb & Gutter</td> <td><input type="checkbox"/> Utility Adjustments</td> <td><input type="checkbox"/></td> </tr> <tr> <td><input type="checkbox"/> Armor Coat</td> <td><input checked="" type="checkbox"/> Drainage Structures</td> <td><input type="checkbox"/> Fencing</td> <td><input type="checkbox"/></td> </tr> <tr> <td><input type="checkbox"/> Asphalt</td> <td><input type="checkbox"/> Erosion Control</td> <td><input type="checkbox"/> Sidewalks</td> <td><input type="checkbox"/></td> </tr> </table>			<input checked="" type="checkbox"/> Grading	<input type="checkbox"/> Concrete	<input type="checkbox"/> Right of Way	<input type="checkbox"/> Lighting	<input checked="" type="checkbox"/> Aggregate	<input type="checkbox"/> Curb & Gutter	<input type="checkbox"/> Utility Adjustments	<input type="checkbox"/>	<input type="checkbox"/> Armor Coat	<input checked="" type="checkbox"/> Drainage Structures	<input type="checkbox"/> Fencing	<input type="checkbox"/>	<input type="checkbox"/> Asphalt	<input type="checkbox"/> Erosion Control	<input type="checkbox"/> Sidewalks	<input type="checkbox"/>
<input checked="" type="checkbox"/> Grading	<input type="checkbox"/> Concrete	<input type="checkbox"/> Right of Way	<input type="checkbox"/> Lighting															
<input checked="" type="checkbox"/> Aggregate	<input type="checkbox"/> Curb & Gutter	<input type="checkbox"/> Utility Adjustments	<input type="checkbox"/>															
<input type="checkbox"/> Armor Coat	<input checked="" type="checkbox"/> Drainage Structures	<input type="checkbox"/> Fencing	<input type="checkbox"/>															
<input type="checkbox"/> Asphalt	<input type="checkbox"/> Erosion Control	<input type="checkbox"/> Sidewalks	<input type="checkbox"/>															
Bridge to Remain in Place	Roadway Width:	Length: Type:																
New Bridge	Roadway Width: 30'	Length: 50' Type: Conc. Slab																
Box Culvert	Span: Rise:	Length: Type:																
Culvert	Diameter:	Length: Type:																
Bridges and Culverts Sized	<input type="checkbox"/> Yes <input type="checkbox"/> N/A <input checked="" type="checkbox"/> Hydraulic Analysis Pending																	
Other Construction Features: Replace 52' thru truss bridge with 50' X 30' prestressed concrete slab bridge. C004024325																		
ESTIMATED COST (in Thousands) ★ OPTIONAL	★ COUNTY 20	★ CITY	★ STATE 20	★ FEDERAL 160	★ OTHER	TOTAL 200												
Project Length: (Nearest Tenth, State Unit of Measure) 0.1 Mile			Project No.: C40(372)															
Signature:		Title: Hall County Surveyor		Date: January 25, 2010														

Board of Public Roads Classifications and Standards
Form 7 One- and Six-Year Plan
Highway or Street Improvement Project

County: C-40 Hall County	City:	Village:																
Location Description: 60 th Road between Wildwood Drive and Guenther Road. Section 9, T 10 N, R 10 W County mile: 22L 06																		
Existing Surface Type and Structures: <i>(Such as dirt, gravel, asphalt, concrete, culvert, or bridge)</i> Gravel and Thru Truss Bridge																		
Average Daily Traffic: 2008 = 55, 2028 = 75		Classification Type: <i>(As shown on Functional Classification Map)</i> Local																
PROPOSED IMPROVEMENT																		
Design Standard Number: RL-2	Surfacing	Thickness: 2" Width: 20'																
<table style="width: 100%; border: none;"> <tr> <td><input checked="" type="checkbox"/> Grading</td> <td><input type="checkbox"/> Concrete</td> <td><input type="checkbox"/> Right of Way</td> <td><input type="checkbox"/> Lighting</td> </tr> <tr> <td><input checked="" type="checkbox"/> Aggregate</td> <td><input type="checkbox"/> Curb & Gutter</td> <td><input type="checkbox"/> Utility Adjustments</td> <td><input type="checkbox"/></td> </tr> <tr> <td><input type="checkbox"/> Armor Coat</td> <td><input checked="" type="checkbox"/> Drainage Structures</td> <td><input type="checkbox"/> Fencing</td> <td><input type="checkbox"/></td> </tr> <tr> <td><input type="checkbox"/> Asphalt</td> <td><input type="checkbox"/> Erosion Control</td> <td><input type="checkbox"/> Sidewalks</td> <td><input type="checkbox"/></td> </tr> </table>			<input checked="" type="checkbox"/> Grading	<input type="checkbox"/> Concrete	<input type="checkbox"/> Right of Way	<input type="checkbox"/> Lighting	<input checked="" type="checkbox"/> Aggregate	<input type="checkbox"/> Curb & Gutter	<input type="checkbox"/> Utility Adjustments	<input type="checkbox"/>	<input type="checkbox"/> Armor Coat	<input checked="" type="checkbox"/> Drainage Structures	<input type="checkbox"/> Fencing	<input type="checkbox"/>	<input type="checkbox"/> Asphalt	<input type="checkbox"/> Erosion Control	<input type="checkbox"/> Sidewalks	<input type="checkbox"/>
<input checked="" type="checkbox"/> Grading	<input type="checkbox"/> Concrete	<input type="checkbox"/> Right of Way	<input type="checkbox"/> Lighting															
<input checked="" type="checkbox"/> Aggregate	<input type="checkbox"/> Curb & Gutter	<input type="checkbox"/> Utility Adjustments	<input type="checkbox"/>															
<input type="checkbox"/> Armor Coat	<input checked="" type="checkbox"/> Drainage Structures	<input type="checkbox"/> Fencing	<input type="checkbox"/>															
<input type="checkbox"/> Asphalt	<input type="checkbox"/> Erosion Control	<input type="checkbox"/> Sidewalks	<input type="checkbox"/>															
Bridge to Remain in Place	Roadway Width:	Length: Type:																
New Bridge	Roadway Width: 30'	Length: 70' Type: Conc. Slab																
Box Culvert	Span: Rise:	Length: Type:																
Culvert	Diameter:	Length: Type:																
Bridges and Culverts Sized	<input type="checkbox"/> Yes <input type="checkbox"/> N/A <input checked="" type="checkbox"/> Hydraulic Analysis Pending																	
Other Construction Features: Replace 71' thru truss bridge with 70' X 30' prestressed concrete slab bridge. C004012910																		
ESTIMATED COST <i>(in Thousands)</i> ★ OPTIONAL	★ COUNTY 26	★ CITY 	★ STATE 26	★ FEDERAL 208	★ OTHER 	TOTAL 260												
Project Length: <i>(Nearest Tenth, State Unit of Measure)</i> 0.1 Mile			Project No.: C40(371)															
Signature:		Title: Hall County Surveyor		Date: January 25, 2010														

Board of Public Roads Classifications and Standards
Form 7 One- and Six-Year Plan
Highway or Street Improvement Project

County: C-40 Hall County	City:	Village:																
Location Description: 80 th Road between Wood River Road and Guenther Road. 0.6 mile North of SE Corner. Section 13. T-10-N. R-11-W County Mile: 26K06																		
Existing Surface Type and Structures: (Such as dirt, gravel, asphalt, concrete, culvert, or bridge) Gravel, 30' Girder Bridge																		
Average Daily Traffic: 2008 = 55, 2008 = 75		Classification Type: (As shown on Functional Classification Map) Local																
PROPOSED IMPROVEMENT																		
Design Standard Number: RL2	Surfacing	Thickness: 2" Width: 24'																
<table style="width: 100%; border: none;"> <tr> <td><input checked="" type="checkbox"/> Grading</td> <td><input type="checkbox"/> Concrete</td> <td><input checked="" type="checkbox"/> Right of Way</td> <td><input type="checkbox"/> Lighting</td> </tr> <tr> <td><input checked="" type="checkbox"/> Aggregate</td> <td><input type="checkbox"/> Curb & Gutter</td> <td><input type="checkbox"/> Utility Adjustments</td> <td><input type="checkbox"/></td> </tr> <tr> <td><input type="checkbox"/> Armor Coat</td> <td><input checked="" type="checkbox"/> Drainage Structures</td> <td><input checked="" type="checkbox"/> Fencing</td> <td><input type="checkbox"/></td> </tr> <tr> <td><input type="checkbox"/> Asphalt</td> <td><input checked="" type="checkbox"/> Erosion Control</td> <td><input type="checkbox"/> Sidewalks</td> <td><input type="checkbox"/></td> </tr> </table>			<input checked="" type="checkbox"/> Grading	<input type="checkbox"/> Concrete	<input checked="" type="checkbox"/> Right of Way	<input type="checkbox"/> Lighting	<input checked="" type="checkbox"/> Aggregate	<input type="checkbox"/> Curb & Gutter	<input type="checkbox"/> Utility Adjustments	<input type="checkbox"/>	<input type="checkbox"/> Armor Coat	<input checked="" type="checkbox"/> Drainage Structures	<input checked="" type="checkbox"/> Fencing	<input type="checkbox"/>	<input type="checkbox"/> Asphalt	<input checked="" type="checkbox"/> Erosion Control	<input type="checkbox"/> Sidewalks	<input type="checkbox"/>
<input checked="" type="checkbox"/> Grading	<input type="checkbox"/> Concrete	<input checked="" type="checkbox"/> Right of Way	<input type="checkbox"/> Lighting															
<input checked="" type="checkbox"/> Aggregate	<input type="checkbox"/> Curb & Gutter	<input type="checkbox"/> Utility Adjustments	<input type="checkbox"/>															
<input type="checkbox"/> Armor Coat	<input checked="" type="checkbox"/> Drainage Structures	<input checked="" type="checkbox"/> Fencing	<input type="checkbox"/>															
<input type="checkbox"/> Asphalt	<input checked="" type="checkbox"/> Erosion Control	<input type="checkbox"/> Sidewalks	<input type="checkbox"/>															
Bridge to Remain in Place	Roadway Width:	Length: Type:																
New Bridge	Roadway Width: 24'	Length: 56' Type: concrete steel																
Box Culvert	Span: Rise:	Length: Type:																
Culvert	Diameter:	Length: Type:																
Bridges and Culverts Sized	<input type="checkbox"/> Yes <input type="checkbox"/> N/A <input checked="" type="checkbox"/> Hydraulic Analysis Pending																	
Other Construction Features: Replace steel girder bridge. Bridge is 14'8" wide 55' long. C004002530 Bridge built in 1932																		
ESTIMATED COST (in Thousands) ★ OPTIONAL	★ COUNTY 25	★ CITY	★ STATE 25	★ FEDERAL 200	★ OTHER	TOTAL 250												
Project Length: (Nearest Tenth, State Unit of Measure) 0.1 mile			Project No.: C40(393)															
Signature:		Title: Hall County Surveyor		Date: January 25, 2010														

Board of Public Roads Classifications and Standards
Form 7 One- and Six-Year Plan
Highway or Street Improvement Project

County: C40 - Hall County	City:	Village:																		
Location Description: On an east and west road between Section 7 & 18, T-11-N, R-11-W of the 6 th P.M., Hall County, NE 13 th Street 33 T 6																				
Existing Surface Type and Structures: (Such as dirt, gravel, asphalt, concrete, culvert, or bridge) Gravel and Bridge																				
Average Daily Traffic: 2008 = 45, 2028 = 90		Classification Type: (As shown on Functional Classification Map) Local																		
PROPOSED IMPROVEMENT																				
Design Standard Number: RL-3	Surfacing	Thickness: 0 Width: 0																		
<table style="width: 100%; border: none;"> <tr> <td><input checked="" type="checkbox"/> Grading</td> <td><input type="checkbox"/> Concrete</td> <td><input checked="" type="checkbox"/> Right of Way</td> <td><input type="checkbox"/> Lighting</td> </tr> <tr> <td><input type="checkbox"/> Aggregate</td> <td><input type="checkbox"/> Curb & Gutter</td> <td><input checked="" type="checkbox"/> Utility Adjustments</td> <td><input type="checkbox"/></td> </tr> <tr> <td><input type="checkbox"/> Armor Coat</td> <td><input type="checkbox"/> Drainage Structures</td> <td><input checked="" type="checkbox"/> Fencing</td> <td><input type="checkbox"/></td> </tr> <tr> <td><input type="checkbox"/> Asphalt</td> <td><input type="checkbox"/> Erosion Control</td> <td><input type="checkbox"/> Sidewalks</td> <td><input type="checkbox"/></td> </tr> </table>			<input checked="" type="checkbox"/> Grading	<input type="checkbox"/> Concrete	<input checked="" type="checkbox"/> Right of Way	<input type="checkbox"/> Lighting	<input type="checkbox"/> Aggregate	<input type="checkbox"/> Curb & Gutter	<input checked="" type="checkbox"/> Utility Adjustments	<input type="checkbox"/>	<input type="checkbox"/> Armor Coat	<input type="checkbox"/> Drainage Structures	<input checked="" type="checkbox"/> Fencing	<input type="checkbox"/>	<input type="checkbox"/> Asphalt	<input type="checkbox"/> Erosion Control	<input type="checkbox"/> Sidewalks	<input type="checkbox"/>		
<input checked="" type="checkbox"/> Grading	<input type="checkbox"/> Concrete	<input checked="" type="checkbox"/> Right of Way	<input type="checkbox"/> Lighting																	
<input type="checkbox"/> Aggregate	<input type="checkbox"/> Curb & Gutter	<input checked="" type="checkbox"/> Utility Adjustments	<input type="checkbox"/>																	
<input type="checkbox"/> Armor Coat	<input type="checkbox"/> Drainage Structures	<input checked="" type="checkbox"/> Fencing	<input type="checkbox"/>																	
<input type="checkbox"/> Asphalt	<input type="checkbox"/> Erosion Control	<input type="checkbox"/> Sidewalks	<input type="checkbox"/>																	
Bridge to Remain in Place	Roadway Width:	Length: Type:																		
New Bridge	Roadway Width: 30.0	Length: 60.0 Ft. Type: Conc Slab																		
Box Culvert	Span: Rise:	Length: Type:																		
Culvert	Diameter:	Length: Type:																		
Bridges and Culverts Sized	<input type="checkbox"/> Yes <input type="checkbox"/> N/A <input type="checkbox"/> Hydraulic Analysis Pending																			
Other Construction Features: Replace existing 16' x 40' truss bridge, channel change and straighten road																				
<table border="1" style="width: 100%; border-collapse: collapse;"> <tr> <th style="width: 15%;">ESTIMATED COST (in Thousands)</th> <th style="width: 12.5%;">★ COUNTY</th> <th style="width: 12.5%;">★ CITY</th> <th style="width: 12.5%;">★ STATE</th> <th style="width: 12.5%;">★ FEDERAL</th> <th style="width: 12.5%;">★ OTHER</th> <th style="width: 12.5%;">TOTAL</th> </tr> <tr> <td>★ OPTIONAL</td> <td>122</td> <td></td> <td></td> <td></td> <td></td> <td>122</td> </tr> </table>							ESTIMATED COST (in Thousands)	★ COUNTY	★ CITY	★ STATE	★ FEDERAL	★ OTHER	TOTAL	★ OPTIONAL	122					122
ESTIMATED COST (in Thousands)	★ COUNTY	★ CITY	★ STATE	★ FEDERAL	★ OTHER	TOTAL														
★ OPTIONAL	122					122														
Project Length: (Nearest Tenth, State Unit of Measure) 0.5 mile				Project No.: C40(135)																
Signature:		Title: Hall County Surveyor			Date: January 25, 2010															

Board of Public Roads Classifications and Standards
Form 7 One- and Six-Year Plan
Highway or Street Improvement Project

County: C40 - Hall County	City:	Village:																
Location Description: On a north and south road between Section 31, T-12-N, R-10-W and Section 36, T-12-N, R-11-W of the 6 th P.M., Hall County, NE 80 th Road 26 U 8																		
Existing Surface Type and Structures: (Such as dirt, gravel, asphalt, concrete, culvert, or bridge) Gravel and Bridge																		
Average Daily Traffic: 2008 = 35, 2028 = 65		Classification Type: (As shown on Functional Classification Map) Local																
PROPOSED IMPROVEMENT																		
Design Standard Number: RL-2	Surfacing	Thickness: 0 Width: 0																
<table style="width: 100%; border: none;"> <tr> <td><input type="checkbox"/> Grading</td> <td><input type="checkbox"/> Concrete</td> <td><input type="checkbox"/> Right of Way</td> <td><input type="checkbox"/> Lighting</td> </tr> <tr> <td><input type="checkbox"/> Aggregate</td> <td><input type="checkbox"/> Curb & Gutter</td> <td><input type="checkbox"/> Utility Adjustments</td> <td><input type="checkbox"/></td> </tr> <tr> <td><input type="checkbox"/> Armor Coat</td> <td><input type="checkbox"/> Drainage Structures</td> <td><input type="checkbox"/> Fencing</td> <td><input type="checkbox"/></td> </tr> <tr> <td><input type="checkbox"/> Asphalt</td> <td><input type="checkbox"/> Erosion Control</td> <td><input type="checkbox"/> Sidewalks</td> <td><input type="checkbox"/></td> </tr> </table>			<input type="checkbox"/> Grading	<input type="checkbox"/> Concrete	<input type="checkbox"/> Right of Way	<input type="checkbox"/> Lighting	<input type="checkbox"/> Aggregate	<input type="checkbox"/> Curb & Gutter	<input type="checkbox"/> Utility Adjustments	<input type="checkbox"/>	<input type="checkbox"/> Armor Coat	<input type="checkbox"/> Drainage Structures	<input type="checkbox"/> Fencing	<input type="checkbox"/>	<input type="checkbox"/> Asphalt	<input type="checkbox"/> Erosion Control	<input type="checkbox"/> Sidewalks	<input type="checkbox"/>
<input type="checkbox"/> Grading	<input type="checkbox"/> Concrete	<input type="checkbox"/> Right of Way	<input type="checkbox"/> Lighting															
<input type="checkbox"/> Aggregate	<input type="checkbox"/> Curb & Gutter	<input type="checkbox"/> Utility Adjustments	<input type="checkbox"/>															
<input type="checkbox"/> Armor Coat	<input type="checkbox"/> Drainage Structures	<input type="checkbox"/> Fencing	<input type="checkbox"/>															
<input type="checkbox"/> Asphalt	<input type="checkbox"/> Erosion Control	<input type="checkbox"/> Sidewalks	<input type="checkbox"/>															
Bridge to Remain in Place	Roadway Width:	Length: Type:																
New Bridge	Roadway Width: 30.0	Length: 100.0 Ft. Type: Conc Slab																
Box Culvert	Span: Rise:	Length: Type:																
Culvert	Diameter:	Length: Type:																
Bridges and Culverts Sized	<input type="checkbox"/> Yes <input type="checkbox"/> N/A <input checked="" type="checkbox"/> Hydraulic Analysis Pending																	
Other Construction Features: Replace existing 16' x 50' Truss Bridge																		
<table border="1" style="width: 100%; border-collapse: collapse;"> <tr> <th style="width: 15%;">ESTIMATED COST (in Thousands)</th> <th style="width: 15%;">★ COUNTY</th> <th style="width: 15%;">★ CITY</th> <th style="width: 15%;">★ STATE</th> <th style="width: 15%;">★ FEDERAL</th> <th style="width: 15%;">★ OTHER</th> <th style="width: 10%;">TOTAL</th> </tr> <tr> <td>★ OPTIONAL</td> <td>150</td> <td></td> <td></td> <td></td> <td></td> <td>150</td> </tr> </table>			ESTIMATED COST (in Thousands)	★ COUNTY	★ CITY	★ STATE	★ FEDERAL	★ OTHER	TOTAL	★ OPTIONAL	150					150		
ESTIMATED COST (in Thousands)	★ COUNTY	★ CITY	★ STATE	★ FEDERAL	★ OTHER	TOTAL												
★ OPTIONAL	150					150												
Project Length: (Nearest Tenth, State Unit of Measure) 0.5 miles		Project No.: C40(133)																
Signature:		Title: Hall County Surveyor Date: January 25, 2010																

Board of Public Roads Classifications and Standards
Form 7 One- and Six-Year Plan
Highway or Street Improvement Project

County: C-40 Hall County	City:	Village:																
Location Description: 60 th Road between Barrows Road and Rosedale Road, 0.7 miles north of the SE Corner of Section 32, T-9-N, R-10-W County Mile: 22A07																		
Existing Surface Type and Structures: (Such as dirt, gravel, asphalt, concrete, culvert, or bridge) Gravel, steel bridge																		
Average Daily Traffic: 2008 = 35, 2008 = 55		Classification Type: (As shown on Functional Classification Map) Local																
PROPOSED IMPROVEMENT																		
Design Standard Number: RL-3	Surfacing	Thickness: Width:																
<table style="width: 100%; border: none;"> <tr> <td><input type="checkbox"/> Grading</td> <td><input type="checkbox"/> Concrete</td> <td><input type="checkbox"/> Right of Way</td> <td><input type="checkbox"/> Lighting</td> </tr> <tr> <td><input type="checkbox"/> Aggregate</td> <td><input type="checkbox"/> Curb & Gutter</td> <td><input type="checkbox"/> Utility Adjustments</td> <td><input type="checkbox"/></td> </tr> <tr> <td><input type="checkbox"/> Armor Coat</td> <td><input checked="" type="checkbox"/> Drainage Structures</td> <td><input type="checkbox"/> Fencing</td> <td><input type="checkbox"/></td> </tr> <tr> <td><input type="checkbox"/> Asphalt</td> <td><input type="checkbox"/> Erosion Control</td> <td><input type="checkbox"/> Sidewalks</td> <td><input type="checkbox"/></td> </tr> </table>			<input type="checkbox"/> Grading	<input type="checkbox"/> Concrete	<input type="checkbox"/> Right of Way	<input type="checkbox"/> Lighting	<input type="checkbox"/> Aggregate	<input type="checkbox"/> Curb & Gutter	<input type="checkbox"/> Utility Adjustments	<input type="checkbox"/>	<input type="checkbox"/> Armor Coat	<input checked="" type="checkbox"/> Drainage Structures	<input type="checkbox"/> Fencing	<input type="checkbox"/>	<input type="checkbox"/> Asphalt	<input type="checkbox"/> Erosion Control	<input type="checkbox"/> Sidewalks	<input type="checkbox"/>
<input type="checkbox"/> Grading	<input type="checkbox"/> Concrete	<input type="checkbox"/> Right of Way	<input type="checkbox"/> Lighting															
<input type="checkbox"/> Aggregate	<input type="checkbox"/> Curb & Gutter	<input type="checkbox"/> Utility Adjustments	<input type="checkbox"/>															
<input type="checkbox"/> Armor Coat	<input checked="" type="checkbox"/> Drainage Structures	<input type="checkbox"/> Fencing	<input type="checkbox"/>															
<input type="checkbox"/> Asphalt	<input type="checkbox"/> Erosion Control	<input type="checkbox"/> Sidewalks	<input type="checkbox"/>															
Bridge to Remain in Place	Roadway Width:	Length: Type:																
New Bridge	Roadway Width:	Length: Type:																
Box Culvert	Span: 10' Rise: 6' Length: 40'	Type: Triple CBC																
Culvert	Diameter:	Length: Type:																
Bridges and Culverts Sized	<input type="checkbox"/> Yes <input type="checkbox"/> N/A <input checked="" type="checkbox"/> Hydraulic Analysis Pending																	
Other Construction Features: Replace steel bridge with triple 10' x 6' x 40' Concrete Box Culvert cast in place. Bridge built in 1968.																		
ESTIMATED COST (in Thousands) ★ OPTIONAL	★ COUNTY 65	★ CITY 	★ STATE 	★ FEDERAL 	★ OTHER 	TOTAL 65												
Project Length: (Nearest Tenth, State Unit of Measure) 0.1 mile			Project No.: C40(378)															
Signature:		Title: Hall County Surveyor		Date: January 25, 2010														

Board of Public Roads Classifications and Standards
Form 7 One- and Six-Year Plan
Highway or Street Improvement Project

County: C-40 Hall County	City:	Village:																
Location Description: 70 th Road between Barrows Road and roasedale Road. 0.3 miles North of SE Corner of Section 31, T-9-N, R-10-W. County Mile: 24A 03																		
Existing Surface Type and Structures: (Such as dirt, gravel, asphalt, concrete, culvert, or bridge) Gravel, steel bridge																		
Average Daily Traffic: 2008 = 35, 2008 = 55		Classification Type: (As shown on Functional Classification Map) Local																
PROPOSED IMPROVEMENT																		
Design Standard Number: RL-3	Surfacing	Thickness: Width:																
<table style="width: 100%; border: none;"> <tr> <td><input type="checkbox"/> Grading</td> <td><input type="checkbox"/> Concrete</td> <td><input type="checkbox"/> Right of Way</td> <td><input type="checkbox"/> Lighting</td> </tr> <tr> <td><input type="checkbox"/> Aggregate</td> <td><input type="checkbox"/> Curb & Gutter</td> <td><input type="checkbox"/> Utility Adjustments</td> <td><input type="checkbox"/></td> </tr> <tr> <td><input type="checkbox"/> Armor Coat</td> <td><input checked="" type="checkbox"/> Drainage Structures</td> <td><input type="checkbox"/> Fencing</td> <td><input type="checkbox"/></td> </tr> <tr> <td><input type="checkbox"/> Asphalt</td> <td><input type="checkbox"/> Erosion Control</td> <td><input type="checkbox"/> Sidewalks</td> <td><input type="checkbox"/></td> </tr> </table>			<input type="checkbox"/> Grading	<input type="checkbox"/> Concrete	<input type="checkbox"/> Right of Way	<input type="checkbox"/> Lighting	<input type="checkbox"/> Aggregate	<input type="checkbox"/> Curb & Gutter	<input type="checkbox"/> Utility Adjustments	<input type="checkbox"/>	<input type="checkbox"/> Armor Coat	<input checked="" type="checkbox"/> Drainage Structures	<input type="checkbox"/> Fencing	<input type="checkbox"/>	<input type="checkbox"/> Asphalt	<input type="checkbox"/> Erosion Control	<input type="checkbox"/> Sidewalks	<input type="checkbox"/>
<input type="checkbox"/> Grading	<input type="checkbox"/> Concrete	<input type="checkbox"/> Right of Way	<input type="checkbox"/> Lighting															
<input type="checkbox"/> Aggregate	<input type="checkbox"/> Curb & Gutter	<input type="checkbox"/> Utility Adjustments	<input type="checkbox"/>															
<input type="checkbox"/> Armor Coat	<input checked="" type="checkbox"/> Drainage Structures	<input type="checkbox"/> Fencing	<input type="checkbox"/>															
<input type="checkbox"/> Asphalt	<input type="checkbox"/> Erosion Control	<input type="checkbox"/> Sidewalks	<input type="checkbox"/>															
Bridge to Remain in Place	Roadway Width:	Length: Type:																
New Bridge	Roadway Width:	Length: Type:																
Box Culvert	Span: 10' Rise: 6' Length: 40'	Type: Triple CBC																
Culvert	Diameter:	Length: Type:																
Bridges and Culverts Sized	<input type="checkbox"/> Yes <input type="checkbox"/> N/A <input checked="" type="checkbox"/> Hydraulic Analysis Pending																	
Other Construction Features: Replace steel bridge with triple 10' x 6' x 40' Concrete Box Culvert cast in place. Bridge built in 1968.																		
ESTIMATED COST (in Thousands) ★ OPTIONAL	★ COUNTY 65	★ CITY																
	★ STATE	★ FEDERAL																
	★ OTHER	TOTAL 65																
Project Length: (Nearest Tenth, State Unit of Measure) 0.1		Project No.: C40(379)																
Signature:		Date: January 25, 2010																
Hall County Surveyor																		

Board of Public Roads Classifications and Standards
Form 7 One- and Six-Year Plan
Highway or Street Improvement Project

County: C-40 Hall County	City:	Village:				
Location Description: Schimmer Drive between BLuff Center Road and 190 th Road. 0.7 mile west of NE corner section 5. T-10-N. R-12-W County Mile: 25Y07						
Existing Surface Type and Structures: (Such as dirt, gravel, asphalt, concrete, culvert, or bridge) Gravel, I Beam and timber combination bridge.						
Average Daily Traffic: 2008 = 35, 2008 = 55		Classification Type: (As shown on Functional Classification Map) Local				
PROPOSED IMPROVEMENT						
Design Standard Number: RL3	Surfacing	Thickness: 2" Width: 24'				
<input checked="" type="checkbox"/> Grading <input type="checkbox"/> Concrete <input checked="" type="checkbox"/> Right of Way <input type="checkbox"/> Lighting <input checked="" type="checkbox"/> Aggregate <input type="checkbox"/> Curb & Gutter <input type="checkbox"/> Utility Adjustments <input type="checkbox"/> <input type="checkbox"/> Armor Coat <input checked="" type="checkbox"/> Drainage Structures <input checked="" type="checkbox"/> Fencing <input type="checkbox"/> <input type="checkbox"/> Asphalt <input checked="" type="checkbox"/> Erosion Control <input type="checkbox"/> Sidewalks <input type="checkbox"/>						
Bridge to Remain in Place	Roadway Width:	Length: Type:				
New Bridge	Roadway Width: 24'	Length: 64' Type: concrete steel				
Box Culvert	Span: Rise:	Length: Type:				
Culvert	Diameter:	Length: Type:				
Bridges and Culverts Sized	<input type="checkbox"/> Yes <input type="checkbox"/> N/A <input checked="" type="checkbox"/> Hydraulic Analysis Pending					
Other Construction Features: Replace 64' steel I beam and timber combination bridge. C004002605 Bridge built in 1941						
ESTIMATED COST (in Thousands) ★ OPTIONAL	★ COUNTY 30	★ CITY	★ STATE 30	★ FEDERAL 240	★ OTHER	TOTAL 300
Project Length: (Nearest Tenth, State Unit of Measure) 0.1 mile			Project No.: C40(392)			
Signature:		Title: Hall County Surveyor			Date: January 25, 2010	

Board of Public Roads Classifications and Standards
Form 7 One- and Six-Year Plan
Highway or Street Improvement Project

County: C40 - Hall County	City:	Village:																
Location Description: On a north and south road between Section 27 & 28, T-12-N, R-10-W of the 6 th P.M., Hall County, NE Monitor Road 20 V 9																		
Existing Surface Type and Structures: (Such as dirt, gravel, asphalt, concrete, culvert, or bridge) Gravel and Bridge																		
Average Daily Traffic: 2008 = 25, 2028 = 45		Classification Type: (As shown on Functional Classification Map) Local																
PROPOSED IMPROVEMENT																		
Design Standard Number: RL-3	Surfacing	Thickness: 0 Width: 0																
<table style="width: 100%; border: none;"> <tr> <td><input type="checkbox"/> Grading</td> <td><input type="checkbox"/> Concrete</td> <td><input type="checkbox"/> Right of Way</td> <td><input type="checkbox"/> Lighting</td> </tr> <tr> <td><input type="checkbox"/> Aggregate</td> <td><input type="checkbox"/> Curb & Gutter</td> <td><input type="checkbox"/> Utility Adjustments</td> <td><input type="checkbox"/></td> </tr> <tr> <td><input type="checkbox"/> Armor Coat</td> <td><input checked="" type="checkbox"/> Drainage Structures</td> <td><input type="checkbox"/> Fencing</td> <td><input type="checkbox"/></td> </tr> <tr> <td><input type="checkbox"/> Asphalt</td> <td><input type="checkbox"/> Erosion Control</td> <td><input type="checkbox"/> Sidewalks</td> <td><input type="checkbox"/></td> </tr> </table>			<input type="checkbox"/> Grading	<input type="checkbox"/> Concrete	<input type="checkbox"/> Right of Way	<input type="checkbox"/> Lighting	<input type="checkbox"/> Aggregate	<input type="checkbox"/> Curb & Gutter	<input type="checkbox"/> Utility Adjustments	<input type="checkbox"/>	<input type="checkbox"/> Armor Coat	<input checked="" type="checkbox"/> Drainage Structures	<input type="checkbox"/> Fencing	<input type="checkbox"/>	<input type="checkbox"/> Asphalt	<input type="checkbox"/> Erosion Control	<input type="checkbox"/> Sidewalks	<input type="checkbox"/>
<input type="checkbox"/> Grading	<input type="checkbox"/> Concrete	<input type="checkbox"/> Right of Way	<input type="checkbox"/> Lighting															
<input type="checkbox"/> Aggregate	<input type="checkbox"/> Curb & Gutter	<input type="checkbox"/> Utility Adjustments	<input type="checkbox"/>															
<input type="checkbox"/> Armor Coat	<input checked="" type="checkbox"/> Drainage Structures	<input type="checkbox"/> Fencing	<input type="checkbox"/>															
<input type="checkbox"/> Asphalt	<input type="checkbox"/> Erosion Control	<input type="checkbox"/> Sidewalks	<input type="checkbox"/>															
Bridge to Remain in Place	Roadway Width:	Length: Type:																
New Bridge	Roadway Width: 30.0	Length: 100.0 ft. Type: Conc Slab																
Box Culvert	Span: Rise:	Length: Type:																
Culvert	Diameter:	Length: Type:																
Bridges and Culverts Sized	<input type="checkbox"/> Yes <input type="checkbox"/> N/A <input checked="" type="checkbox"/> Hydraulic Analysis Pending																	
Other Construction Features: Replace existing 16' x 46' truss bridge																		
<table border="1" style="width: 100%; border-collapse: collapse;"> <tr> <th style="width: 15%;">ESTIMATED COST (in Thousands)</th> <th style="width: 15%;">★ COUNTY</th> <th style="width: 15%;">★ CITY</th> <th style="width: 15%;">★ STATE</th> <th style="width: 15%;">★ FEDERAL</th> <th style="width: 15%;">★ OTHER</th> <th style="width: 10%;">TOTAL</th> </tr> <tr> <td>★ OPTIONAL</td> <td>28</td> <td></td> <td>28</td> <td>220</td> <td></td> <td>276</td> </tr> </table>			ESTIMATED COST (in Thousands)	★ COUNTY	★ CITY	★ STATE	★ FEDERAL	★ OTHER	TOTAL	★ OPTIONAL	28		28	220		276		
ESTIMATED COST (in Thousands)	★ COUNTY	★ CITY	★ STATE	★ FEDERAL	★ OTHER	TOTAL												
★ OPTIONAL	28		28	220		276												
Project Length: (Nearest Tenth, State Unit of Measure) 0.1 mile		Project No.: C40(171)-1																
Signature:		Title: Hall County Surveyor Date: January 25, 2010																

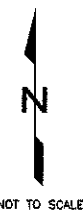
Board of Public Roads Classifications and Standards
Form 7 One- and Six-Year Plan
Highway or Street Improvement Project

County: C40 - Hall County	City:	Village:																
Location Description: On an east and west road beginning at the southwest corner of Section 13, T-12-N, R-11-W; thence easterly 4.0 miles to the southwest corner of Section 15, T-12-N, R-10-W One-R Road 43K, L, M & N																		
Existing Surface Type and Structures: (Such as dirt, gravel, asphalt, concrete, culvert, or bridge) Gravel and Culverts																		
Average Daily Traffic: 2008 = 145, 2028 = 261		Classification Type: (As shown on Functional Classification Map) Other Arterial																
PROPOSED IMPROVEMENT																		
Design Standard Number: ROA-3	Surfacing	Thickness: 0.4 Width: 24.0																
<table style="width: 100%; border: none;"> <tr> <td><input checked="" type="checkbox"/> Grading</td> <td><input type="checkbox"/> Concrete</td> <td><input checked="" type="checkbox"/> Right of Way</td> <td><input type="checkbox"/> Lighting</td> </tr> <tr> <td><input type="checkbox"/> Aggregate</td> <td><input type="checkbox"/> Curb & Gutter</td> <td><input checked="" type="checkbox"/> Utility Adjustments</td> <td><input type="checkbox"/></td> </tr> <tr> <td><input type="checkbox"/> Armor Coat</td> <td><input checked="" type="checkbox"/> Drainage Structures</td> <td><input checked="" type="checkbox"/> Fencing</td> <td><input type="checkbox"/></td> </tr> <tr> <td><input checked="" type="checkbox"/> Asphalt</td> <td><input type="checkbox"/> Erosion Control</td> <td><input type="checkbox"/> Sidewalks</td> <td><input type="checkbox"/></td> </tr> </table>			<input checked="" type="checkbox"/> Grading	<input type="checkbox"/> Concrete	<input checked="" type="checkbox"/> Right of Way	<input type="checkbox"/> Lighting	<input type="checkbox"/> Aggregate	<input type="checkbox"/> Curb & Gutter	<input checked="" type="checkbox"/> Utility Adjustments	<input type="checkbox"/>	<input type="checkbox"/> Armor Coat	<input checked="" type="checkbox"/> Drainage Structures	<input checked="" type="checkbox"/> Fencing	<input type="checkbox"/>	<input checked="" type="checkbox"/> Asphalt	<input type="checkbox"/> Erosion Control	<input type="checkbox"/> Sidewalks	<input type="checkbox"/>
<input checked="" type="checkbox"/> Grading	<input type="checkbox"/> Concrete	<input checked="" type="checkbox"/> Right of Way	<input type="checkbox"/> Lighting															
<input type="checkbox"/> Aggregate	<input type="checkbox"/> Curb & Gutter	<input checked="" type="checkbox"/> Utility Adjustments	<input type="checkbox"/>															
<input type="checkbox"/> Armor Coat	<input checked="" type="checkbox"/> Drainage Structures	<input checked="" type="checkbox"/> Fencing	<input type="checkbox"/>															
<input checked="" type="checkbox"/> Asphalt	<input type="checkbox"/> Erosion Control	<input type="checkbox"/> Sidewalks	<input type="checkbox"/>															
Bridge to Remain in Place	Roadway Width:	Length: Type:																
New Bridge	Roadway Width: 0	Length: 0 Type: 0																
Box Culvert	Span: Rise:	Length: Type:																
Culvert	Diameter:	Length: Type:																
Bridges and Culverts Sized	<input type="checkbox"/> Yes <input type="checkbox"/> N/A <input type="checkbox"/> Hydraulic Analysis Pending																	
Other Construction Features: 6 1/2" x 24' Asphalt 4-miles RS2170(3) Cairo East																		
ESTIMATED COST (in Thousands)	★ COUNTY	★ CITY	★ STATE	★ FEDERAL	★ OTHER	TOTAL												
★ OPTIONAL	80		80	640		800												
Project Length: (Nearest Tenth, State Unit of Measure) 4.0 miles			Project No.: C40(121)-2															
Signature:		Title: Hall County Surveyor		Date: January 25, 2010														

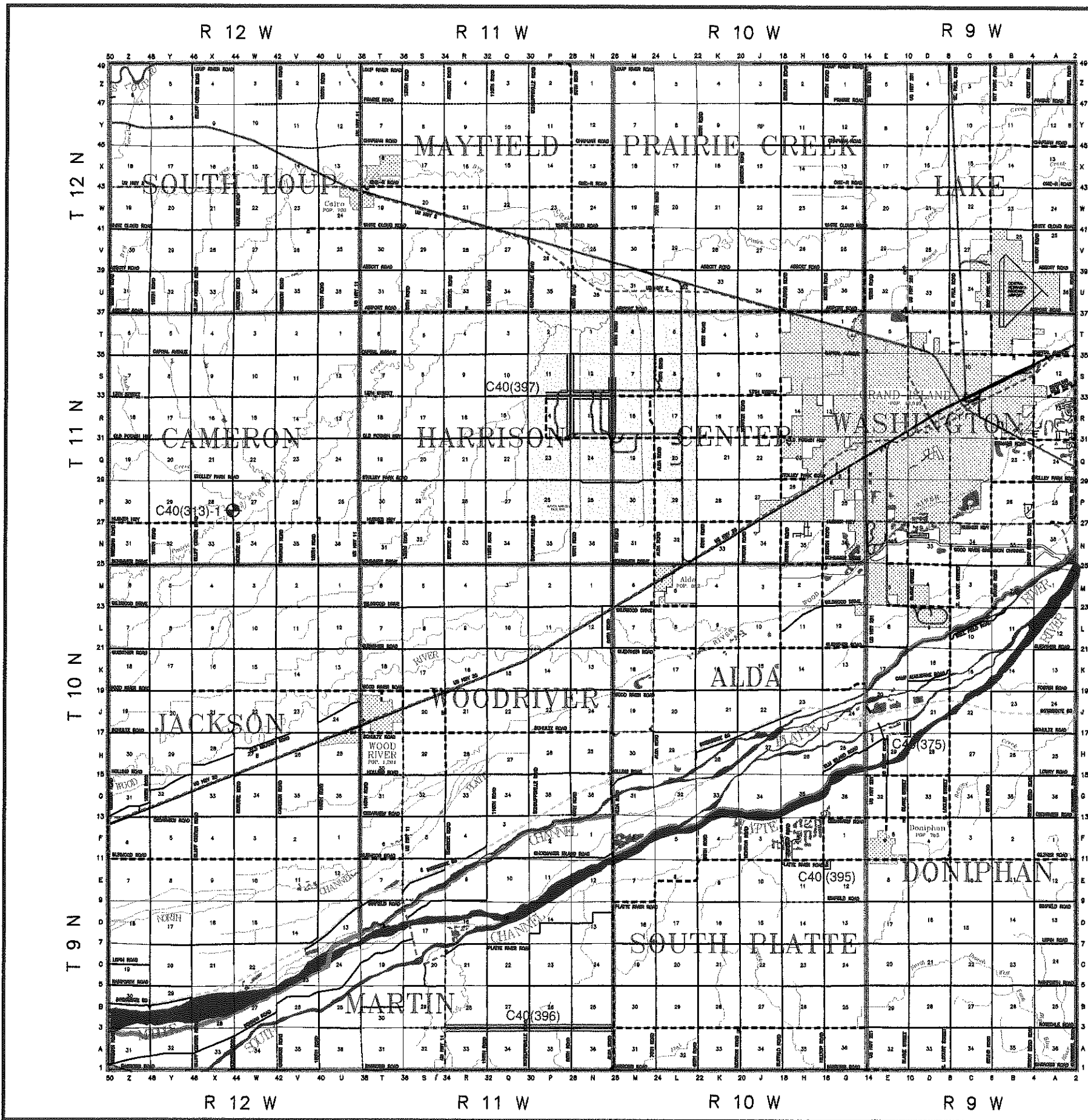
HALL COUNTY
NEBRASKA
1-YEAR ROAD PROGRAM
2010

LEGEND

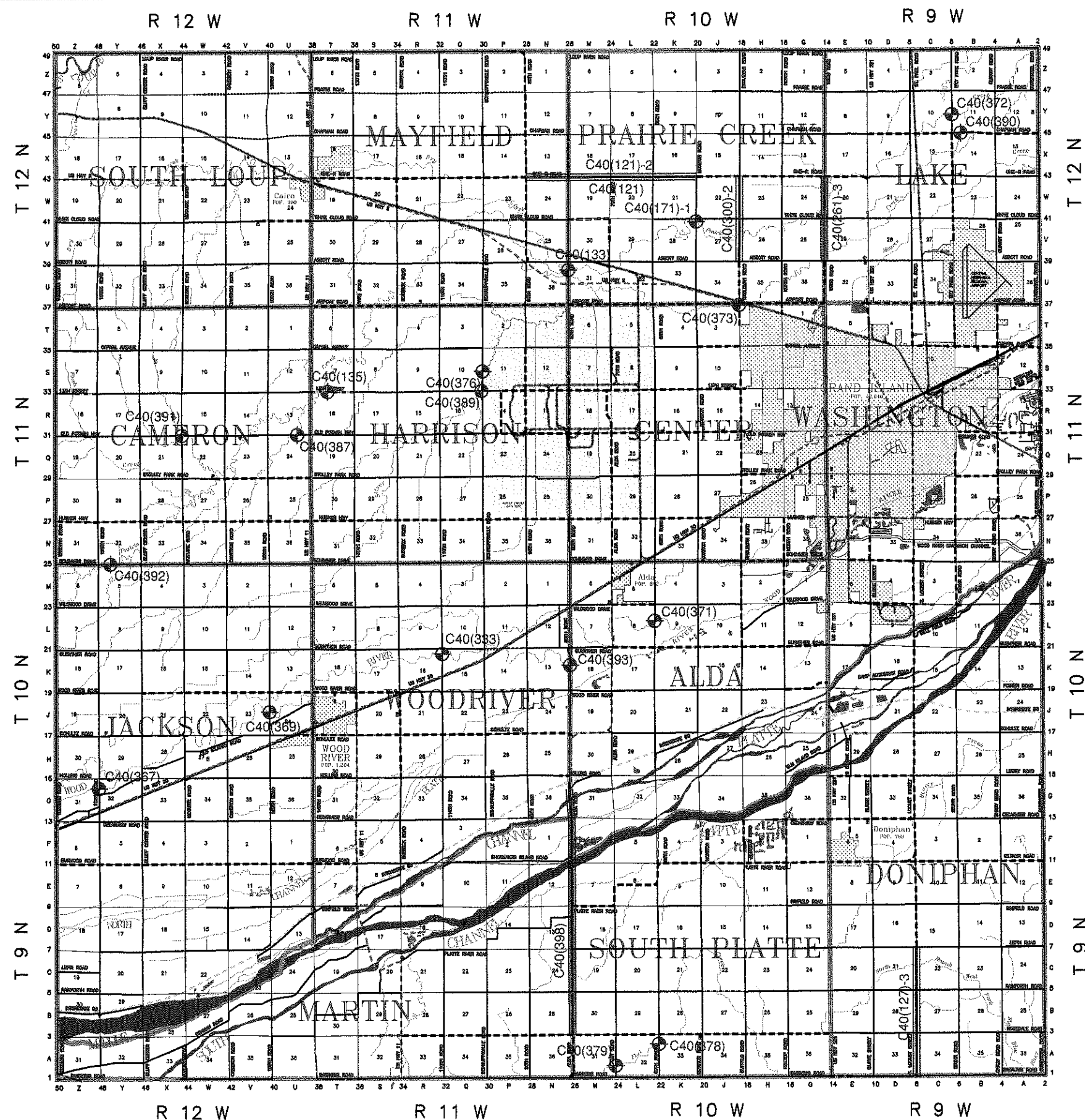
- ROAD PROJECT
- BRIDGE PROJECT
- INTERSTATE HIGHWAY
- STATE AND FED. HIGHWAY 4 LANE
- STATE AND FED. HIGHWAY 2 LANE
- COUNTY ROAD - PAVED
- COUNTY ROAD - PAVED SUBDIVISION
- COUNTY ROAD - GRAVEL
- COUNTY ROAD - DIRT
- COUNTY ROAD - MIN. MAINT. GRAVEL
- COUNTY ROAD - MIN. MAINT. PRIMITIVE
- TOWNSHIP ROAD - GRAVEL
- TOWNSHIP ROAD - DIRT
- TOWNSHIP ROAD - NON MAINTAINED
- TOWNSHIP ROAD - PRIMITIVE
- COUNTY SHOP
- CEMETERY



NOT TO SCALE

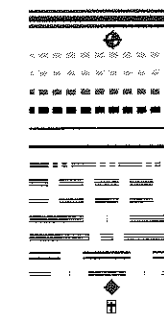


HALL COUNTY
NEBRASKA
6-YEAR ROAD PROGRAM
2010



LEGEND

- ROAD PROJECT
BRIDGE PROJECT
INTERSTATE HIGHWAY
STATE AND FED. HIGHWAY 4 LANE
STATE AND FED. HIGHWAY 2 LANE
COUNTY ROAD - PAVED
COUNTY ROAD -PAVED SUBDIVISION
COUNTY ROAD - GRAVEL
COUNTY ROAD - DIRT
COUNTY ROAD - MIN. MAINT. GRAVEL
COUNTY ROAD - MIN. MAINT. PRIMITIVE
TOWNSHIP ROAD - GRAVEL
TOWNSHIP ROAD - DIRT
TOWNSHIP ROAD - NON MAINTAINED
TOWNSHIP ROAD - PRIMITIVE
COUNTY SHOP
CEMETERY





Hall County Regional Planning Commission

Wednesday, February 03, 2010
Regular Meeting

Item J5

Consent Agenda

Insert a narrative here

Staff Contact:



Hall County Regional Planning Commission

Wednesday, February 03, 2010
Regular Meeting

Item M6

Final Plats

Insert a narrative here

Staff Contact:

January 21, 2010

Dear Members of the Board:

RE: Final Plat – Wild Rose Ranch Estates 2nd Subdivision

For reasons of Section 19-923 Revised Statutes of Nebraska, as amended, there is herewith submitted a final plat of Wild Rose Ranch 2nd Subdivision, located west of Alda Rd., and south of Whooping Crane Drive, in Hall County Nebraska.

This final plat proposes to create 18 lots on a tract of land comprising all of Lots One (1) through Eighteen (18) inclusive, all of Outlot "B", all of Outlot "C", and all of Outlot "D", all being in Wild Rose Ranch Estates Subdivision, Hall County, Nebraska, said tract containing 49.177 acres, more or less.

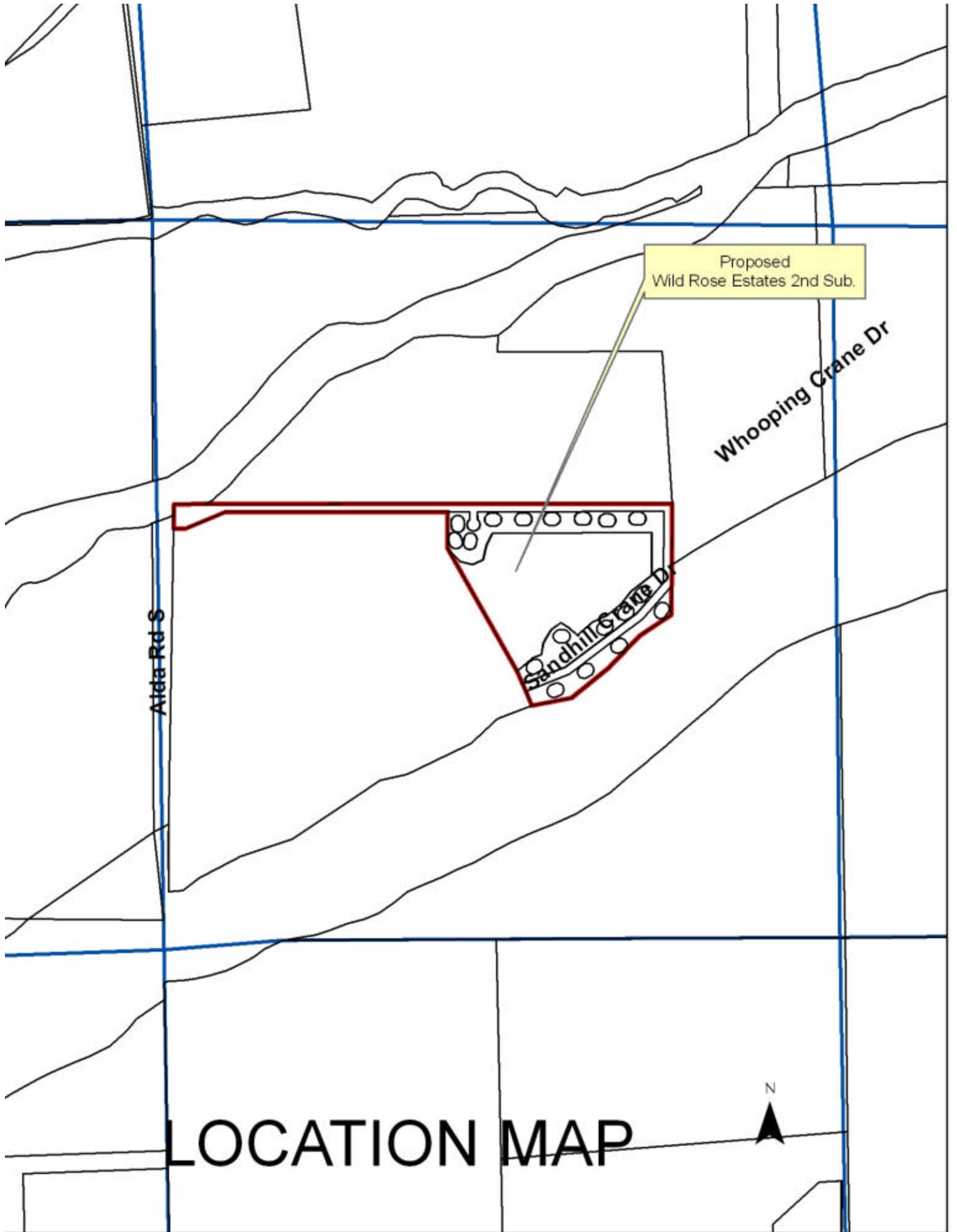
You are hereby notified that the Regional Planning Commission will consider this final plat at the next meeting that will be held at 6:00 p.m. on February 3, 2010 in the Council Chambers located in Grand Island's City Hall.

Sincerely,

Chad Nabity, AICP
Planning Director

cc: Hall County Clerk
Hall County Attorney
Hall County Public Works
Hall County Building Department
Manager of Postal Operations
Benjamin & Associates, Inc.

This letter was sent to the following School Districts 1R, 2, 3, 8, 12, 19, 82, 83, 100, 126.



Proposed
Wild Rose Estates 2nd Sub.

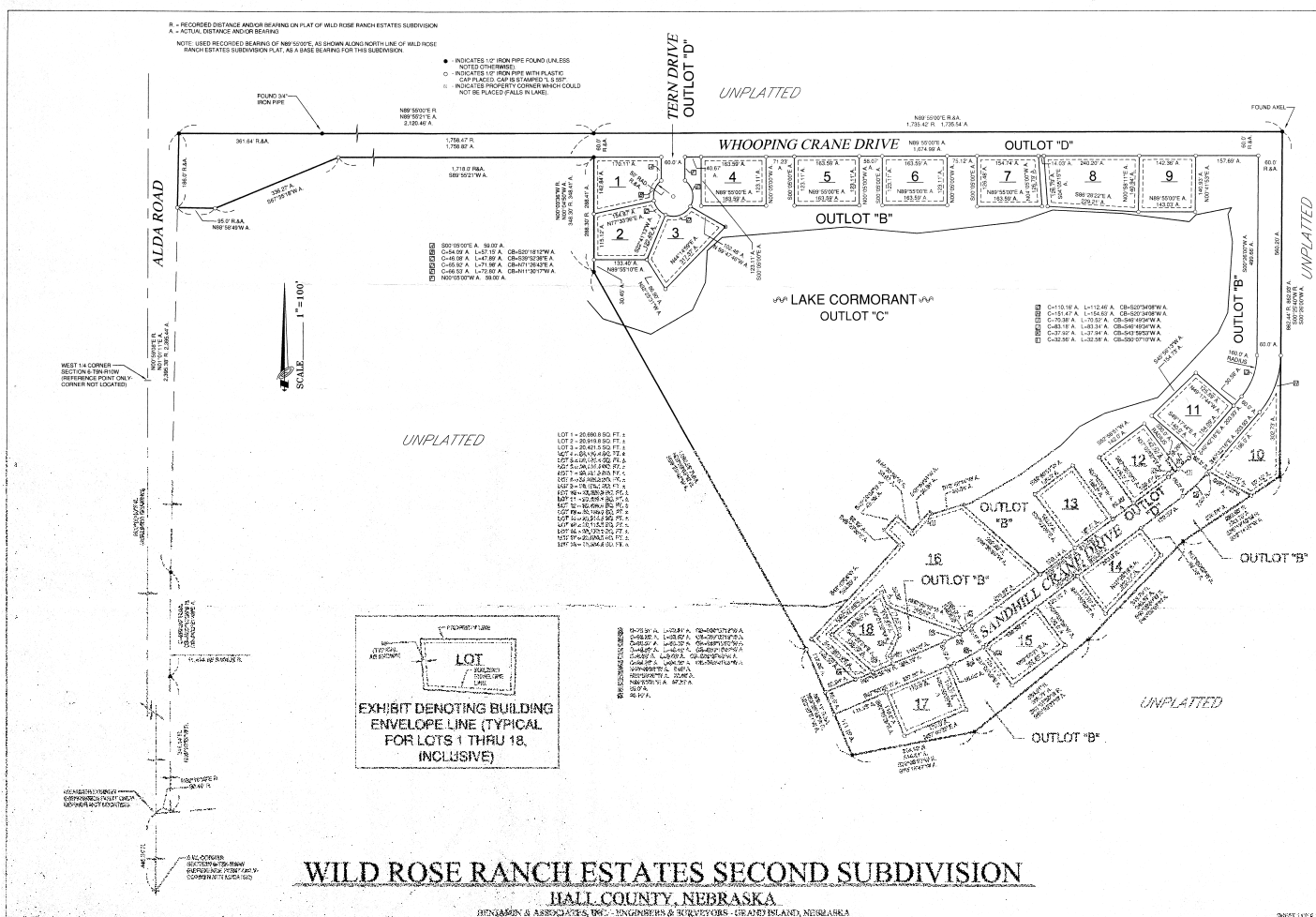
Whooping Crane Dr

Alda Rd S

Sandhill Creek Dr

N

LOCATION MAP



January 21, 2010

Dear Members of the Board:

RE: Final Plat – Hulme 2nd Subdivision

For reasons of Section 19-923 Revised Statutes of Nebraska, as amended, there is herewith submitted a final plat of Hulme 2nd Subdivision, located north of Airport Road and west of 190th Rd., in Hall County Nebraska.

This final plat proposes to create 1 lot on a tract of land being a part Lot One (1), Hulme Subdivision, Hall County (now vacated), being part of the East Half of the Southeast Quarter (E ½ SE ¼) of Section Thirty-One (31), Township Twelve (12) North, Range Twelve (12), West of the 6th P.M. Hall County, Nebraska, said tract containing 5.04 acres, more or less.

You are hereby notified that the Regional Planning Commission will consider this final plat at the next meeting that will be held at 6:00 p.m. on February 3, 2010 in the Council Chambers located in Grand Island's City Hall.

Sincerely,

Chad Nabity, AICP
Planning Director

cc: Hall County Clerk
Hall County Attorney
Hall County Public Works
Hall County Building Department
Manager of Postal Operations
Trenton D. Snow LLC

This letter was sent to the following School Districts 1R, 2, 3, 8, 12, 19, 82, 83, 100, 126.

Wiseman Rd N

Abbott Rd W

190th Rd N

Proposed
Hulme 2nd Sub.

Hulme 2nd Sub.

Airport Rd W

LOCATION MAP



HULME 2nd SUBDIVISION
A SUBDIVISION BEING PART OF EAST 1/2 OF THE SOUTHEAST 1/4
OF SECTION 31, TOWNSHIP 12 NORTH, RANGE 12 WEST OF THE
SIXTH PRINCIPAL MERIDIAN, HALL COUNTY, NEBRASKA

UNPLATTED

NORTHEAST CORNER OF THE EAST 1/2 OF THE
SOUTHEAST 1/4 OF SECTION 31, T12N, R12W,
HALL COUNTY, NEBRASKA
FOUND BUREAU OF LAND RECAP
-NAIL IN POWER POLE NORTHWEST 48.41'
-NAIL IN POWER POLE NORTHEAST 49.11'
-CENTER OF CONCRETE WITNESS CORNER
-WITNESS CORNER WEST 32.53'
-CAPPED 1/2" IRON PIPE 40.0' WEST ON
EAST-WEST 1/4 SECTION LINE

LEGAL DESCRIPTION

A tract of land being part Lot One, Hulme Subdivision, Hall County (now vacated), being part of the East Half of the Southeast Quarter (E1/2 SE1/4) of Section Thirty-one (31), Township Twelve (12) North, Range Twelve (12) West of the Sixth Principal Meridian, Hall County, Nebraska, more particularly described as follows: Beginning at the Northeast corner of the Southeast Quarter of said Section 31 and assuming the East line of said Southeast Quarter as bearing S 00°07'51" W and as bearings contained herein are relative thereto; thence S 00°07'51" W on the aforesaid East line a distance of 742.0 feet; thence N 47°00' W a distance of 532.11 feet; thence N 00°07'51" E parallel with the aforesaid East line a distance of 382.78 feet to a point on the North line of said Southeast Quarter; thence S 89°27'36" E on the aforesaid North line a distance of 390.0 feet to the place of beginning. Containing 5.04 acres, more or less.

SURVEYOR'S CERTIFICATE

I, Trenton D. Snow, a Professional Land Surveyor licensed in the State of Nebraska, hereby certify that I completed an accurate survey of "HULME 2nd SUBDIVISION", Hall County, Nebraska, as shown on the accompanying plat thereof; that the lots, blocks, streets, avenues, alleys, parks, commons and other grounds as contained in said subdivision as shown on the accompanying plat thereof are well and accurately staked off and marked; that 5/8" x 24" capped rebar were placed at all lot corners; that the dimensions of each lot are as shown on the plat; that each lot bears its own number; and that said survey was made with reference to known and recorded monuments.

(S E A L)

Trenton D. Snow
Nebr. Reg. L.S. No. 926

Date: _____

DEDICATION

KNOW ALL MEN BY THESE PRESENTS, that Doyle L. Hulme and Kay V. Hulme, husband and wife, being the sole owner(s) of the land described hereon, have caused the same to be surveyed, subdivided, platted and designated as "HULME 2nd SUBDIVISION", Hall County, Nebraska, as shown on the accompanying plat thereof, and does hereby dedicate the road right-of-way as shown thereon to the public for their use forever and the easements, if any, as shown thereon for the location, construction and maintenance of public service utilities forever, together with the right of ingress and egress thereto, and hereby prohibiting the planting of trees, bushes and shrubs, or placing other obstruction upon, over, along or underneath the surface of such easements; and that the foregoing subdivision as more particularly described in the description hereon as appears on this plat is made with the free consent and in accordance with the desires of the undersigned owner(s).

IN WITNESS WHEREOF, I have affixed my signature hereto this _____ day of _____, 20____.

Doyle L. Hulme

Kay V. Hulme

ACKNOWLEDGEMENTS

State of _____
County of _____

The foregoing instrument was acknowledged before me this _____ day of _____, 20____, by Doyle L. Hulme, husband of Kay V. Hulme.

Notary Public

Affix Seal Here

State of _____
County of _____

The foregoing instrument was acknowledged before me this _____ day of _____, 20____, by Kay V. Hulme, wife of Doyle L. Hulme.

Notary Public

Affix Seal Here

APPROVALS

Submitted to and approved by the Regional Planning Commission of Hall County, Grand Island, Wood River and the Villages of Alda, Cairo and Doniphan, Nebraska.

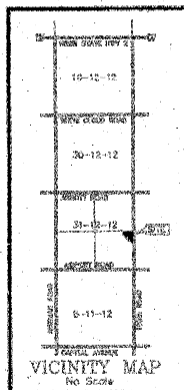
Chairman

Date

Approved and accepted by the Hall County Board of Supervisors, this _____ day of _____, 20____.

Chairman of the Board

County Clerk



0 100' 200'

Scale: 1" = 100'

(M) = Measured Distance

(P) = Plotted Distance

+ = Temporary Point

• = Corner Found

○ = Corner Established (5/8" x 24" Capped Rebar)

NOTE: 5.04 Acre TOTAL

(216326.85 Sq. Ft. TOTAL)

AIRPORT ROAD

TRENTON D. SNOW, LLC
A LAND SURVEYING COMPANY

Professional Land Surveyor
Nebraska License No. 926

January 21, 2010

Dear Members of the Board:

RE: Final Plat – O.N.E. Subdivision

For reasons of Section 19-923 Revised Statutes of Nebraska, as amended, there is herewith submitted a final plat of O.N.E. Subdivision, located south of Airport Road and west of 190th Rd., in Hall County Nebraska.

This final plat proposes to create 1 lot on a tract of land being part of Government Lot One (1) and part of the Southeast Quarter of the Northeast Quarter (SE $\frac{1}{4}$ NE $\frac{1}{4}$) of Section Six (6) Township Twelve (12) North, Range Twelve (12), West of the 6th P.M. Hall County, Nebraska, said tract containing 2.08 acres, more or less.

You are hereby notified that the Regional Planning Commission will consider this final plat at the next meeting that will be held at 6:00 p.m. on February 3, 2010 in the Council Chambers located in Grand Island's City Hall.

Sincerely,

Chad Nabity, AICP
Planning Director

cc: Hall County Clerk
Hall County Attorney
Hall County Public Works
Hall County Building Department
Manager of Postal Operations
Trenton D. Snow LLC

This letter was sent to the following School Districts 1R, 2, 3, 8, 12, 19, 82, 83, 100, 126.

Wiseman Rd N

Airport Rd W

Proposed
O.N.E. Sub.

190th Rd N

O.N.E. Sub.

Wiseman Rd N

Capital Ave W

LOCATION MAP



