



# Hall County Regional Planning Commission

Wednesday, April 01, 2009  
Regular Meeting

## Item M6

### P & D Acres Subdivision HC

*Insert a narrative here*

Staff Contact:

March 16, 2009

Dear Members of the Board:

**RE: Final Plat – P & D Acres Subdivision**

For reasons of Section 19-923 Revised Statutes of Nebraska, as amended, there is herewith submitted a final plat of P & D Acres Subdivision, located east of 150<sup>th</sup> Rd., and north of Capital Avenue, in Hall County, Nebraska.

This final plat proposes to create 1 lot on a tract of land comprising all of Lot 1, Dubbs Second Subdivision and a tract of land in part of the Southwest Quarter (SW1/4) of Section One (1), Township Eleven (11) North, Range Twelve (12) West of the 6<sup>th</sup> P.M. in Hall County, Nebraska.

You are hereby notified that the Regional Planning Commission will consider this final plat at the next meeting that will be held at 6:00 p.m. on April 1, 2009 in the Council Chambers located in Grand Island's City Hall.

Sincerely,

Chad Nabity, AICP  
Planning Director

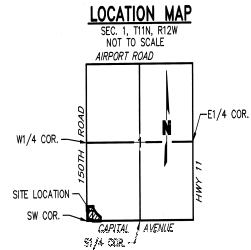
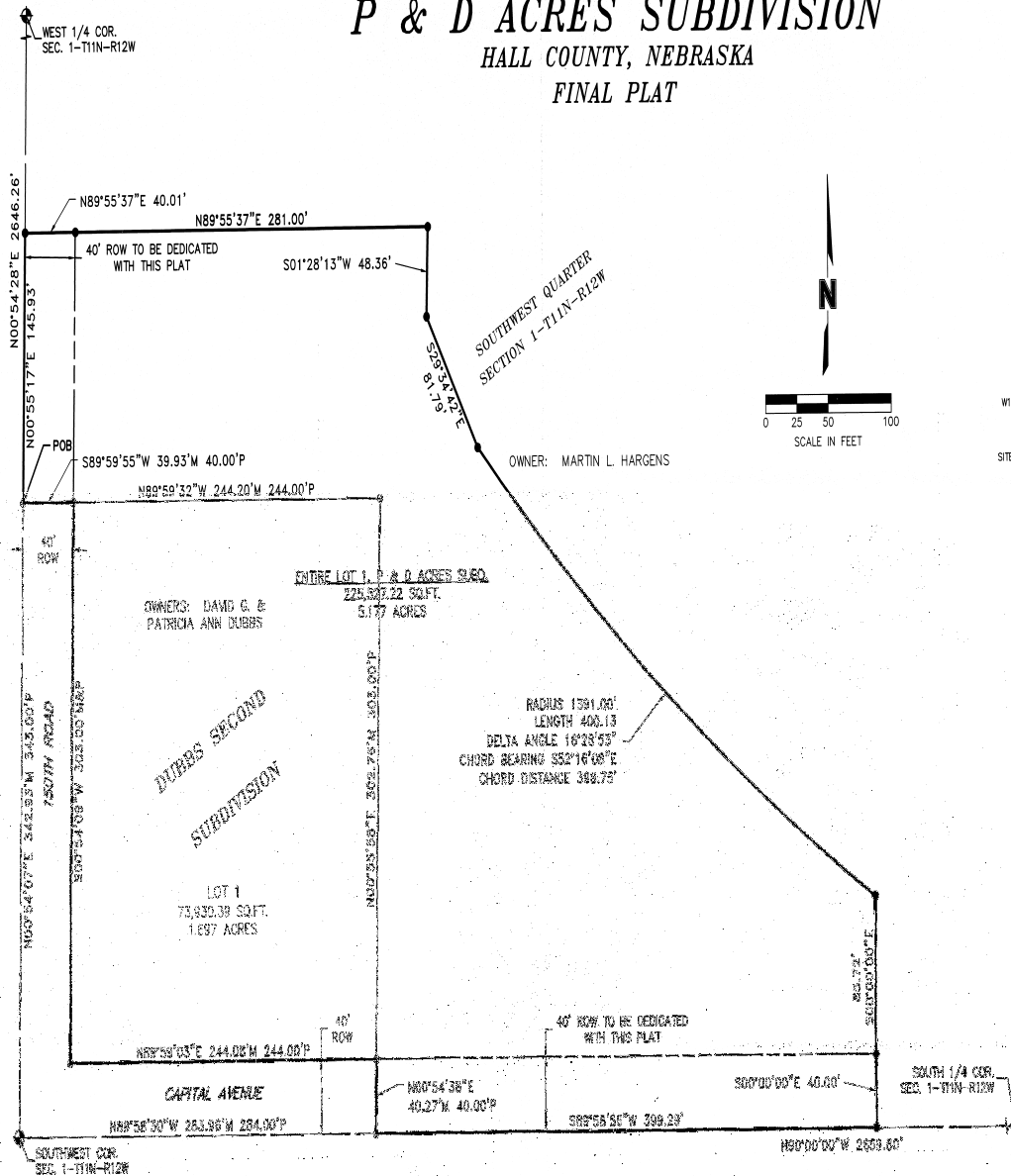
cc: Hall County Clerk  
Hall County Attorney  
Hall County Public Works  
Hall County Building Department  
Manager of Postal Operations  
Olsson Associates

This letter was sent to the following School Districts 1R, 2, 3, 8, 12, 19, 82, 83, 100, 126.

# P & D ACRES SUBDIVISION

## HALL COUNTY, NEBRASKA

### FINAL PLAT



#### SECTION TIES

**SOUTH 1/4 CORNER, SEC. 1-T11N-R12W**  
 FOUND B.L.M. BRASS CAP 40.8" BELOW GRADE  
 SE 41.72' TO P.W. NAIL IN SATE POST  
 S 32.74' TO RED HEAD IN POWER POLE  
 N 33.90' TO RED HEAD IN CORNER FENCE POST  
 NE 42.17' TO TOP CENTER OF 30" C.M.P.

**SOUTHWEST CORNER, SEC. 1-T11N-R12W**  
 FOUND B.L.M. BRASS CAP 40.7" BELOW GRADE  
 NE 58.80' TO 1/2" PIPE (PROPERTY CORNER)  
 SE 44.81' TO 3" NAILS IN POWER POLE  
 NW 45.75' TO TOP CENTER OF CONCRETE WITNESS CORNER

**WEST 1/4 CORNER, SEC. 1-T11N-R12W**  
 FOUND B.L.M. BRASS CAP 40.7" BELOW GRADE  
 E 33.00' TO P.W. NAIL IN POWER POLE  
 W 34.76' TO RED HEAD IN POWER POLE  
 NW 51.24' TO NORTHEAST CORNER OF CONCRETE PAD FOR IRRIGATION WELL  
 NNW 58.41' TO RED HEAD IN POWER POLE

#### LEGEND

- SECTION CORNER
- SET CORNER (5/8"x36" REBAR W/CAP)
- o FOUND CORNER (1/2" IRON PIPE)
- ROW LINE
- SUBDIVISION LINE
- SECTION LINE
- PROPERTY LINE
- M MEASURED DISTANCE
- P PLATTED DISTANCE DUBBS 2ND SUBD.

OWNERS: DAVID G. DUBBS & PATRICIA ANN DUBBS  
 AND MARTIN L. HARGENS & STACIA R. HARGENS  
 SUBDIVIDER: DAVID G. DUBBS & PATRICIA ANN DUBBS  
 AND MARTIN L. HARGENS & STACIA R. HARGENS  
 SURVEYOR: OLSSON ASSOCIATES  
 ENGINEER: OLSSON ASSOCIATES  
 NUMBER OF LOTS: 1

SHEET 1 OF 2

**OLSSON**  
 ASSOCIATES

201 West 1st Street  
 P.O. Box 675  
 Grand Island, NE 68801-0675  
 TEL 402/334-8700  
 FAX 402/334-8702

