



Hall County Regional Planning Commission

Wednesday, April 01, 2009

Regular Meeting

Item M3

Woodland Park Eighth

Insert a narrative here

Staff Contact:

March 16, 2009

Dear Members of the Board:

RE: Final Plat – Woodland Park Eight Subdivision

For reasons of Section 19-923 Revised Statutes of Nebraska, as amended, there is herewith submitted a final plat of Woodland Park Eight Subdivision, located east of Independence Avenue and north of Capital Avenue, in Grand Island in Hall County, Nebraska.

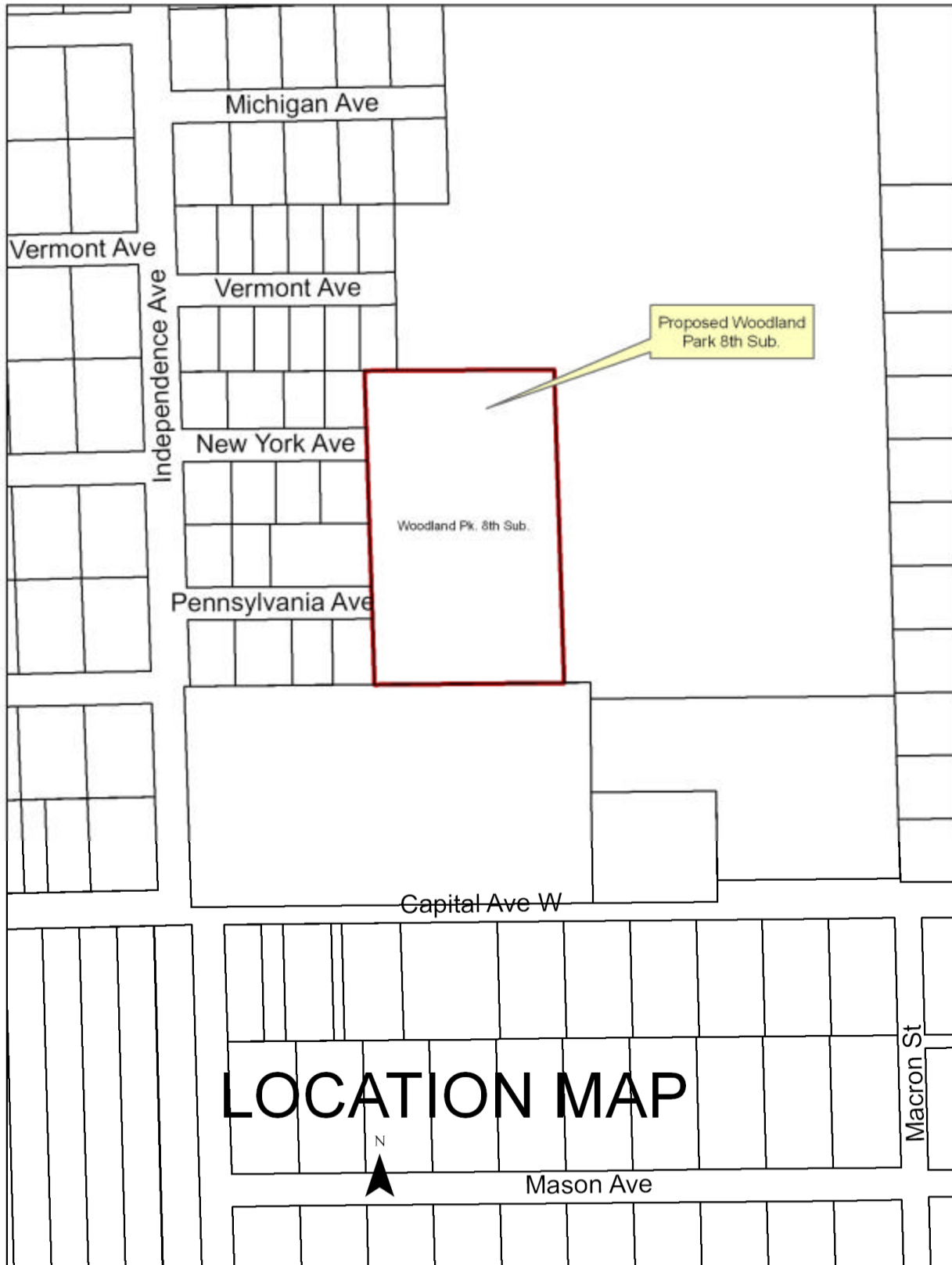
This final plat proposes to create 14 lots on a tract of land comprising a part of Outlot "A", Woodland Park Fifth Subdivision, a Part of the City of Grand Island, Located in the Southeast Quarter of Section Two (2), Township Eleven (11) North, Range Ten (10), West of the 6th P.M., in Hall County, Nebraska.

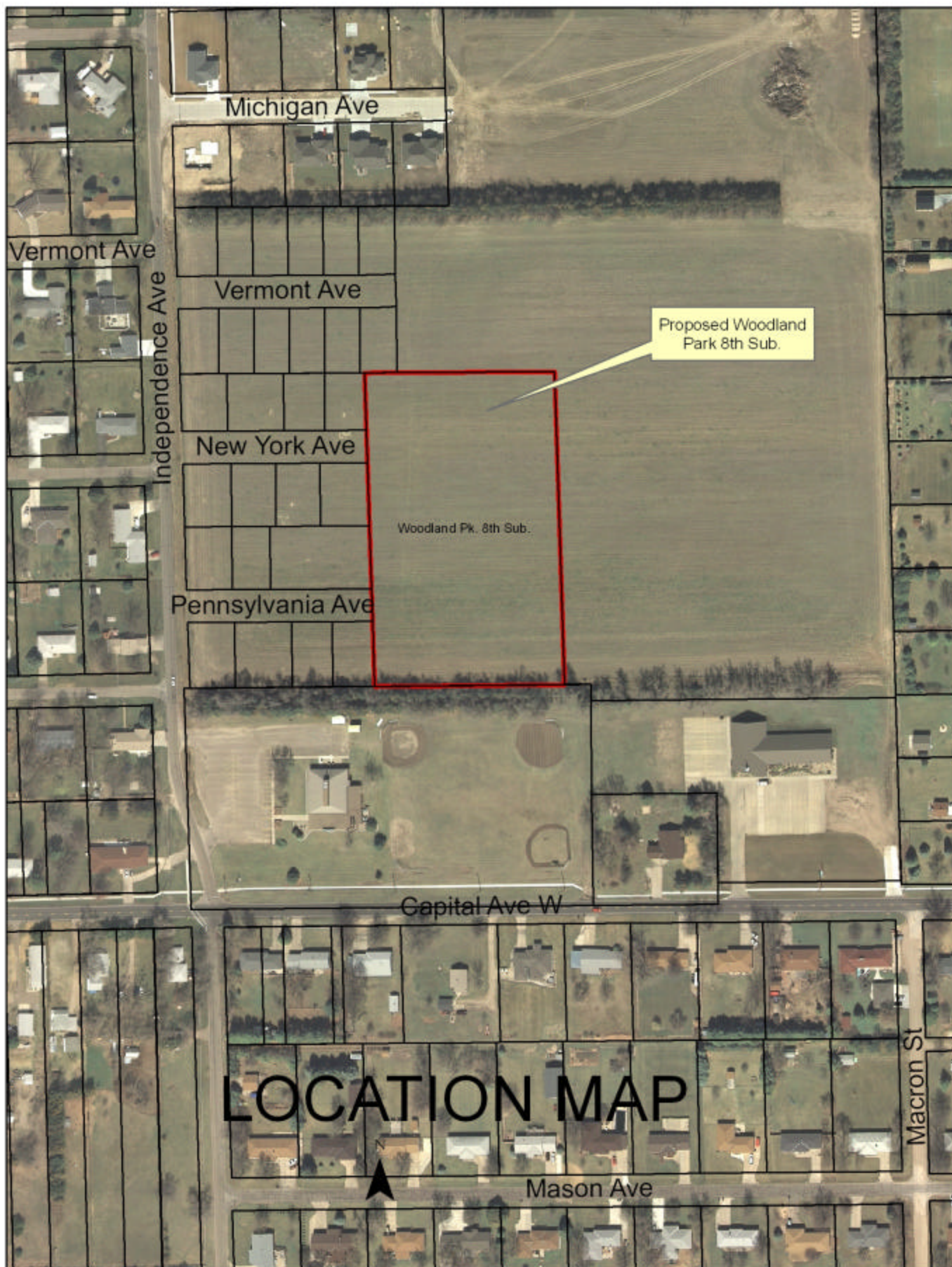
You are hereby notified that the Regional Planning Commission will consider this final plat at the next meeting that will be held at 6:00 p.m. on April 1, 2009 in the Council Chambers located in Grand Island's City Hall.

Sincerely,

Chad Nabity, AICP
Planning Director

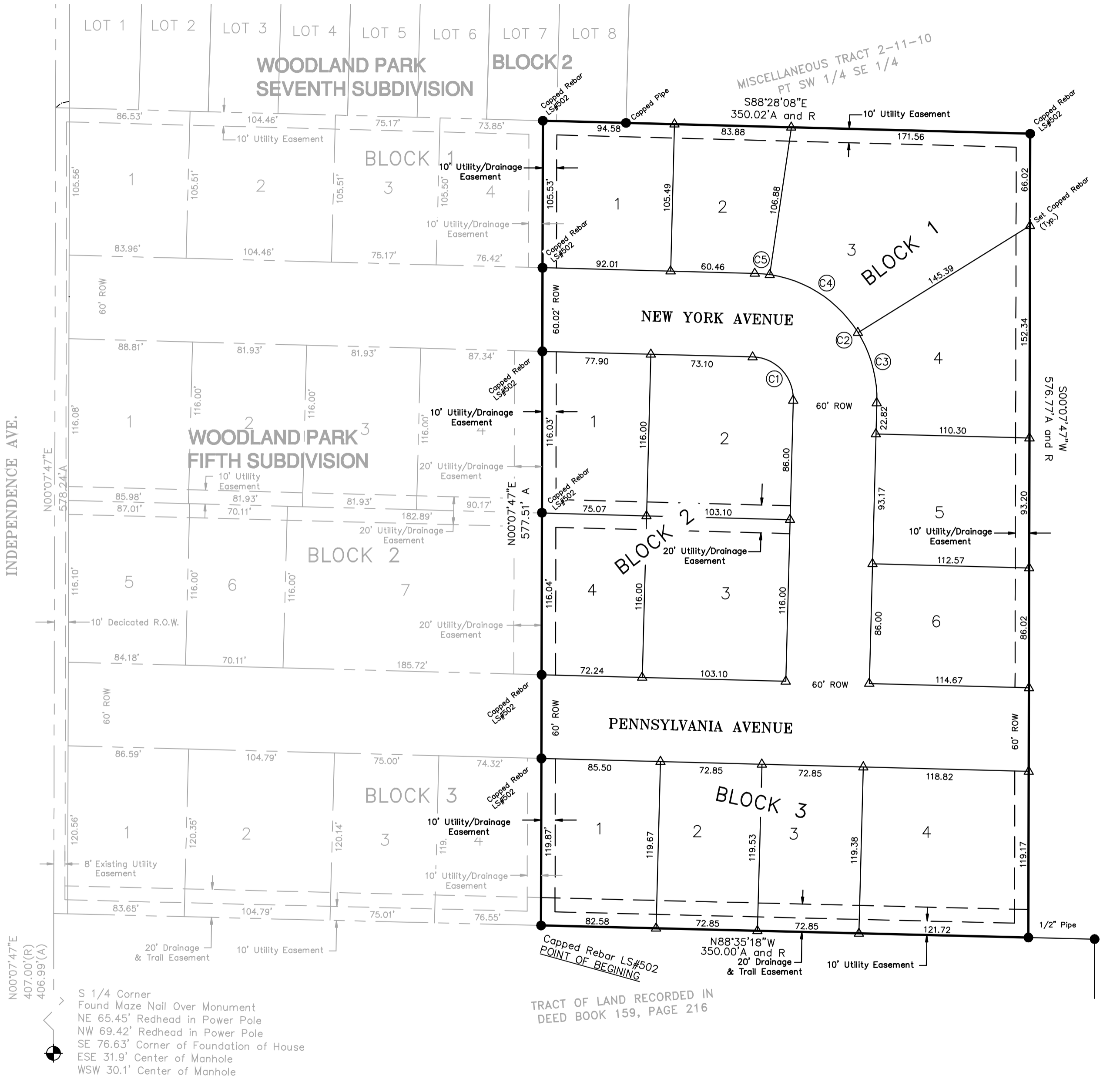
cc: City Clerk
City Attorney
City Public Works
City Building Inspections
City Utilities
REGA Engineering Group INC.





WOODLAND PARK EIGHTH SUBDIVISION
FINAL PLAT

HALL COUNTY
AN ADDITION TO THE CITY OF GRAND ISLAND NEBRASKA



OWNERS
WOODLAND PARK TOWNHOMES, LLC
& HASTINGS VENTURE LLC,
5101 CENTRAL PARK DRIVE
LINCOLN, NEBRASKA

LAND SURVEYOR AND ENGINEER
REGA ENGINEERING GROUP, INC..
3701 UNION DRIVE, SUITE 101
LINCOLN, NEBRASKA



NORTH

SCALE 1" = 60'

