



Hall County Regional Planning Commission

Wednesday, February 04, 2009
Regular Meeting

Item M8

Final Plat - Fairway Crossings at Indianhead Golf Club

Insert a narrative here

Staff Contact:

January 19, 2009

Dear Members of the Board:

RE: Final Plat – Fairway Crossings at Indianhead Golf Club First Subdivision

For reasons of Section 19-923 Revised Statutes of Nebraska, as amended, there is herewith submitted a final plat of Fairway Crossings at Indianhead Golf Club First Subdivision, located north of Husker Hwy and east of Engleman Rd. in Grand Island, in Hall County, Nebraska consisting of 31.94 acres (77) Lots.

This final plat proposes to create 77 lots on a tract of land, comprising a tract of land being part of the Southwest Quarter (SW1/4) of Section Twenty-Six (26), Township Eleven (11) North, Range Ten (10) West of the 6th P.M. in the City of Grand Island, Hall County, Nebraska.

You are hereby notified that the Regional Planning Commission will consider this final plat at the next meeting that will be held at 6:00 p.m. on February 4, 2009 in the Council Chambers located in Grand Island's City Hall.

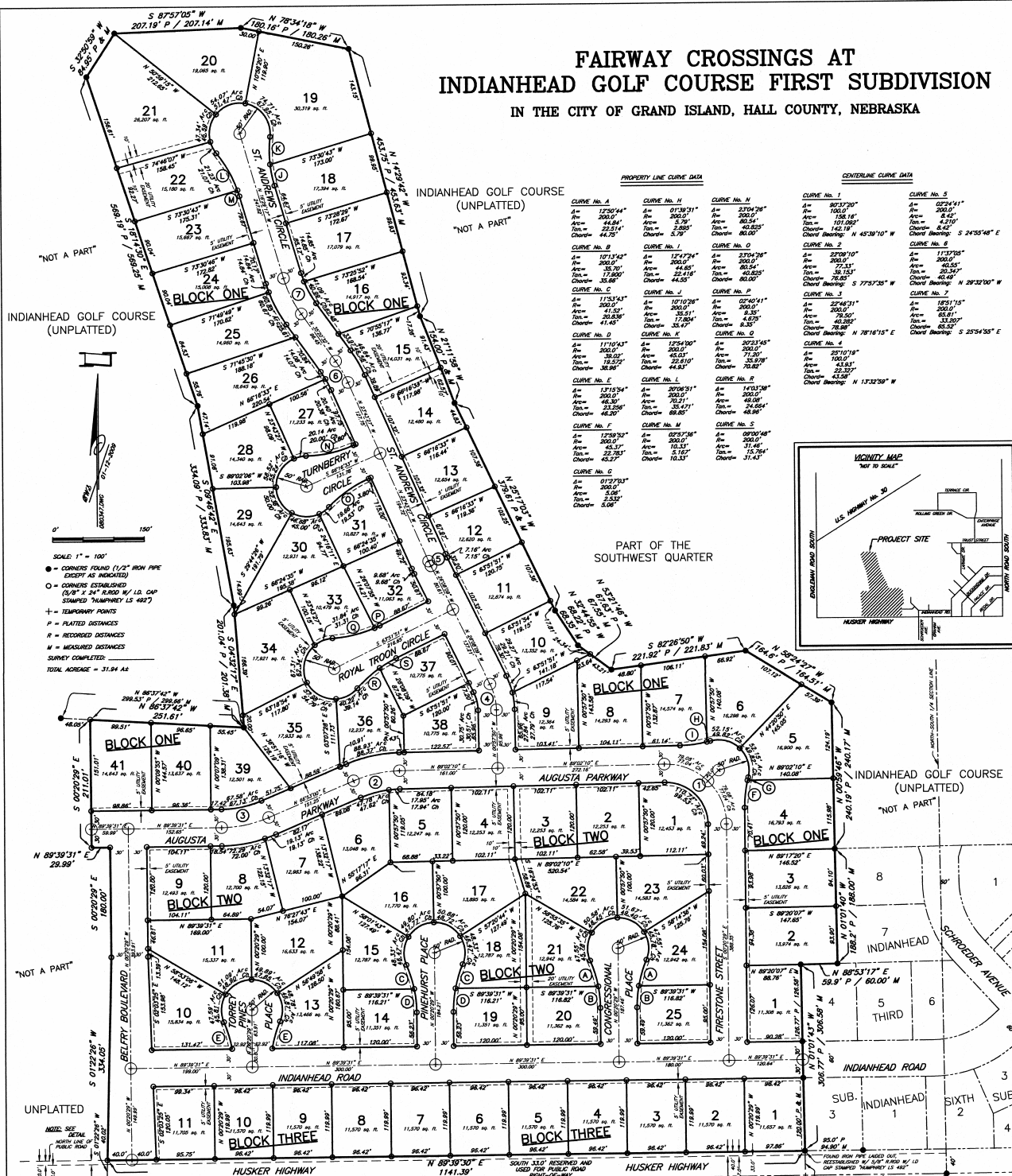
Sincerely,

Chad Nabity, AICP
Planning Director

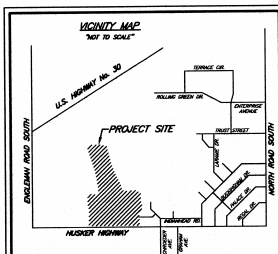
cc: City Clerk
City Attorney
Director of Public Works
Director of Utilities
Director of Building Inspections
Manager of Postal Operations
Buffalo Surveying Corp.

This letter was sent to the following School Districts 1R, 2, 3, 8, 12, 19, 82, 83, 100, 126.

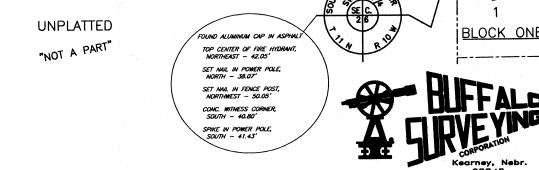
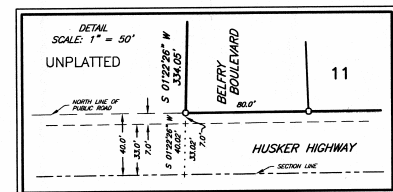
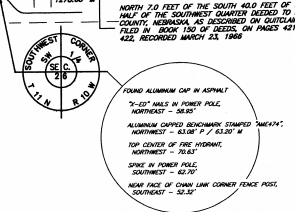
FAIRWAY CROSSINGS AT INDIANHEAD GOLF COURSE FIRST SUBDIVISION IN THE CITY OF GRAND ISLAND, HALL COUNTY, NEBRASKA

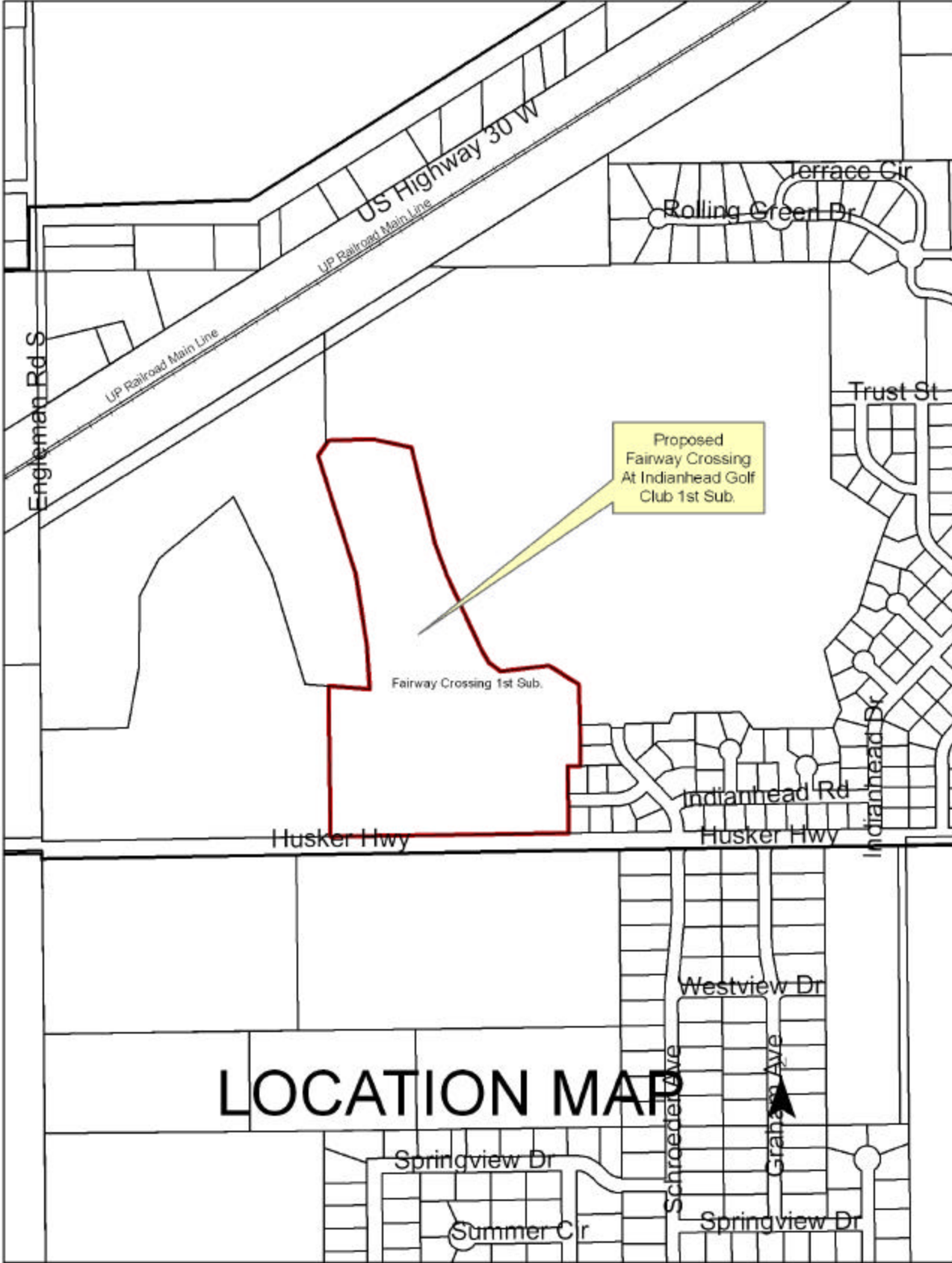


PROPERTY LINE CURVE DATA			CONTIGUOUS CURVE DATA		
CURVE No. 1 A = 1230.94' R = 200.0' Tan = 44.81' Chord = 22.51'Chord = 5.79'	CURVE No. 11 A = 0138.91' R = 200.0' Tan = 2.28' Chord = 0.46'	CURVE No. 21 A = 2704.78' R = 200.0' Tan = 80.54' Chord = 45.65'	CURVE No. 31 A = 2270.70' R = 200.0' Tan = 56.15' Chord = 78.80'	CURVE No. 41 A = 2270.70' R = 200.0' Tan = 56.15' Chord = 78.80'	CURVE No. 51 A = 0274.11' R = 200.0' Tan = 4.70' Chord = 0.84'



- SCALE: 1" = 100'
- - CORNERS FOUND (1/2" IRON PIPE EXCEPT AS INDICATED)
- - CORNERS ESTABLISHED (5/8" X 24" IRON PIPE W/ 1/2" CAP STAMPED "HARRIS 15 482")
- + - TEMPORARY POINTS
- P - PLATTED DISTANCES
- M - MEASURED DISTANCES
- W - MEASURED DISTANCES
- SURVEY COMPLETED
- TOTAL ACRES = 31.94 AC





LOCATION MAP