



Hall County Regional Planning Commission

Wednesday, November 05, 2008
Regular Meeting

Item L6

Fairway Crossing at Indianhead Golf Club

Insert a narrative here

Staff Contact:

October 20, 2008

Dear Members of the Board:

RE: Preliminary Plat – Fairway Crossing at Indianhead Golf Club.

For reasons of Section 19-923 Revised Statutes of Nebraska, as amended, there is herewith submitted a preliminary plat of Fairway Crossing at Indianhead Golf Club, located north of Husker Highway and east of Engleman Road.

This preliminary plat proposes to create 151 lots plus 2 outlots on a tract of land in the Southwest Quarter of the Northwest Quarter (SW1/4NW1/4), South Half of the Northeast Quarter (S1/2NE1/4), and the South Half (S1/2) OF Section Twenty-Six (26), Township Eleven (11) North, Range Ten (10), all in Grand Island, Hall County Nebraska, West of the 6th P.M. This land consists of approximately 61.70 acres.

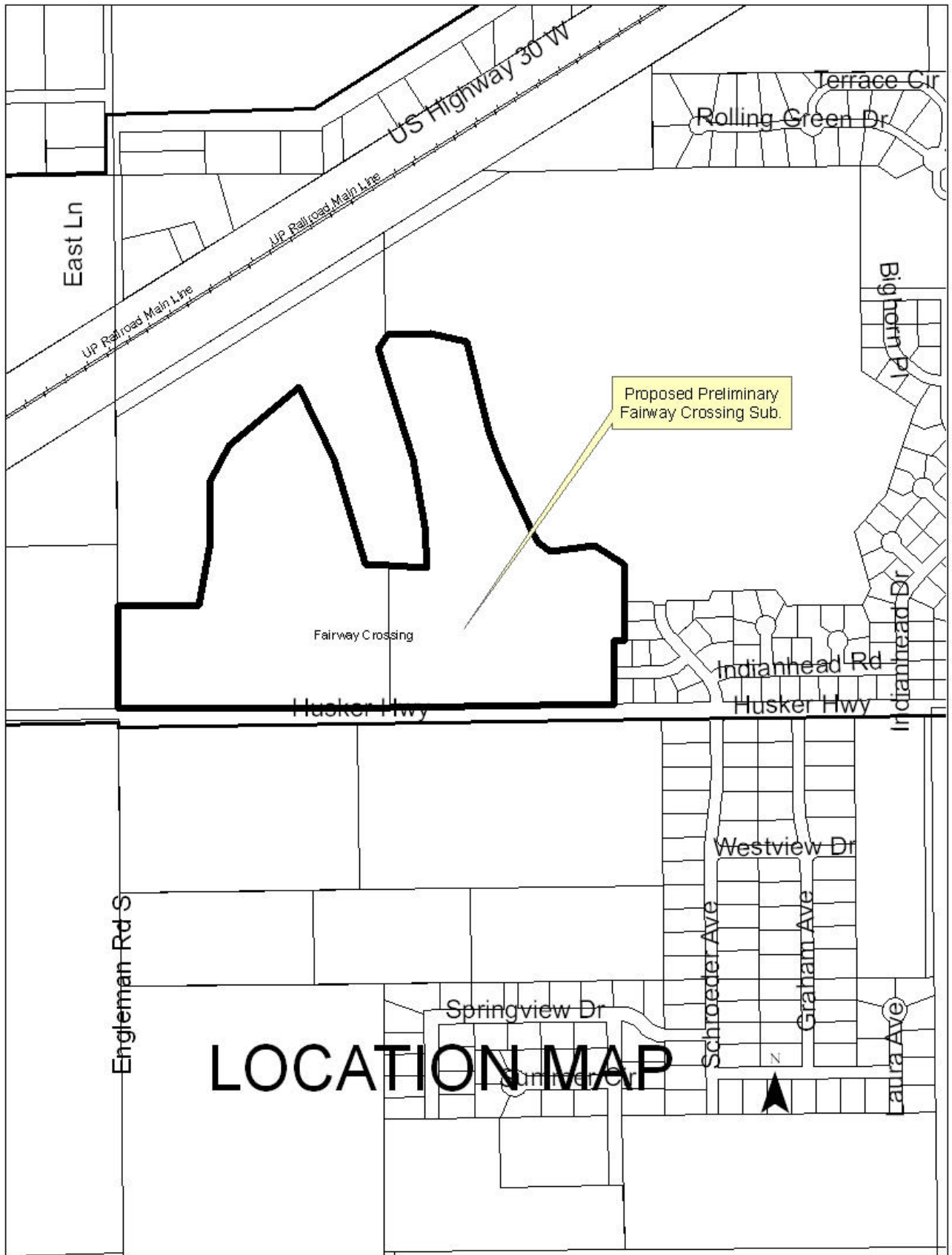
You are hereby notified that the Regional Planning Commission will consider this preliminary plat and final plat at the next meeting that will be held at 6:00 p.m. on November 5 2008 in the Council Chambers located in Grand Island's City Hall.

Sincerely,

Chad Nabity, AICP
Planning Director

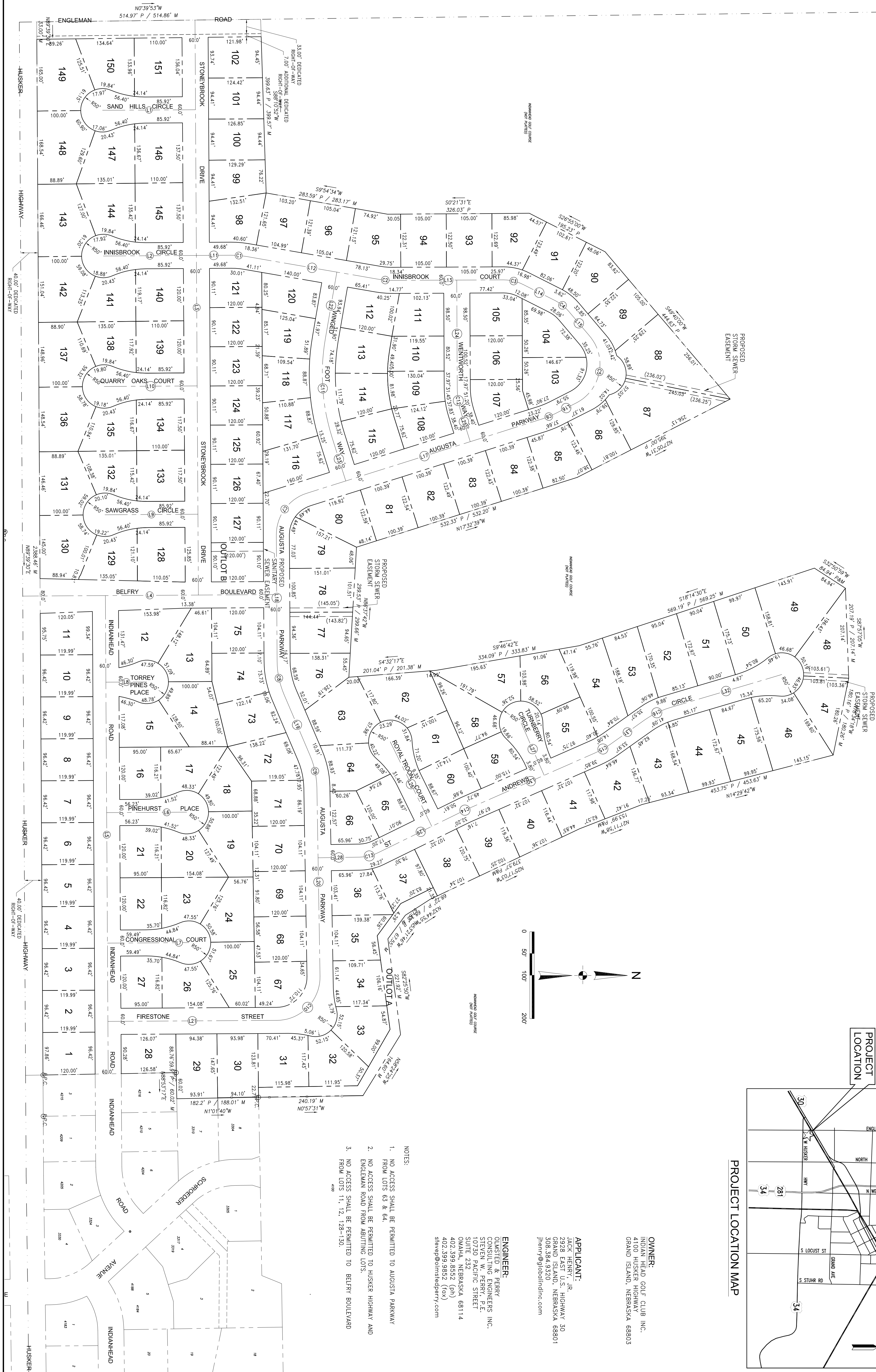
cc: City Clerk
City Attorney
Director of Public Works
Director of Utilities
Director of Building Inspections
Manager of Postal Operations
Olmsted & Perry Consulting Engineers Inc.

This letter was sent to the following School Districts 1R, 2, 3, 8, 12, 19, 82, 83, 100, 126.



PRELIMINARY PLAT
FAIRWAY CROSSING
AT INDIANHEAD GOLF CLUB

LOTS 1 THRU 151 INCLUSIVE OUTLOTS A & B
LOCATED IN THE SOUTHWEST QUARTER (SW 1/4) OF SECTION 26, TOWNSHIP 11 NORTH
RANGE 10 WEST OF THE 6TH P.M., HALL COUNTY, NEBRASKA



PROJECT LOCATION MAP

OWNER:
INDIAN HEAD GOLF CLUB INC.
4100 HUSKER HIGHWAY
GRAND ISLAND, NEBRASKA 68803

APPLICANT:
JACK HENRY, JR.
2928 EAST U.S. HIGHWAY 30
GRAND ISLAND, NEBRASKA 68801
308.384.9320
jhenry@globalindinc.com

ENGINEER:
OLMSTED & PERRY
CONSULTING ENGINEERS INC
STEVEN W. PERRY, P.E.
10730 PACIFIC STREET
SUITE 232
OMAHA, NEBRASKA 68114
402.399.8552 (ph)
402.399.9852 (fax)
stevep@olmstedperry.com

1. NO ACCESS SHALL BE PERMITTED TO AUGUSTA PARKWAY FROM LOTS 63 & 64.
2. NO ACCESS SHALL BE PERMITTED TO HUSKER HIGHWAY AND ENGLEMAN ROAD FROM ABUTTING LOTS.
3. NO ACCESS SHALL BE PERMITTED TO BELFRY BOULEVARD FROM LOTS 11, 12, 128-130.

<div style="text-align: right;">REVISIONS</div> <div style="text-align: center;">  </div>	OLMSTED & PERRY CONSULTING ENGINEERS INC.	
	10730 PACIFIC STREET SUITE 232 OMAHA, NEBRASKA	

FAIRWAY CROSSING
AT INDIANHEAD GOLF CLUB
GRAND ISLAND, NEBRASKA

DESIGNED BY:
GEP

CHECKED BY:
SWP

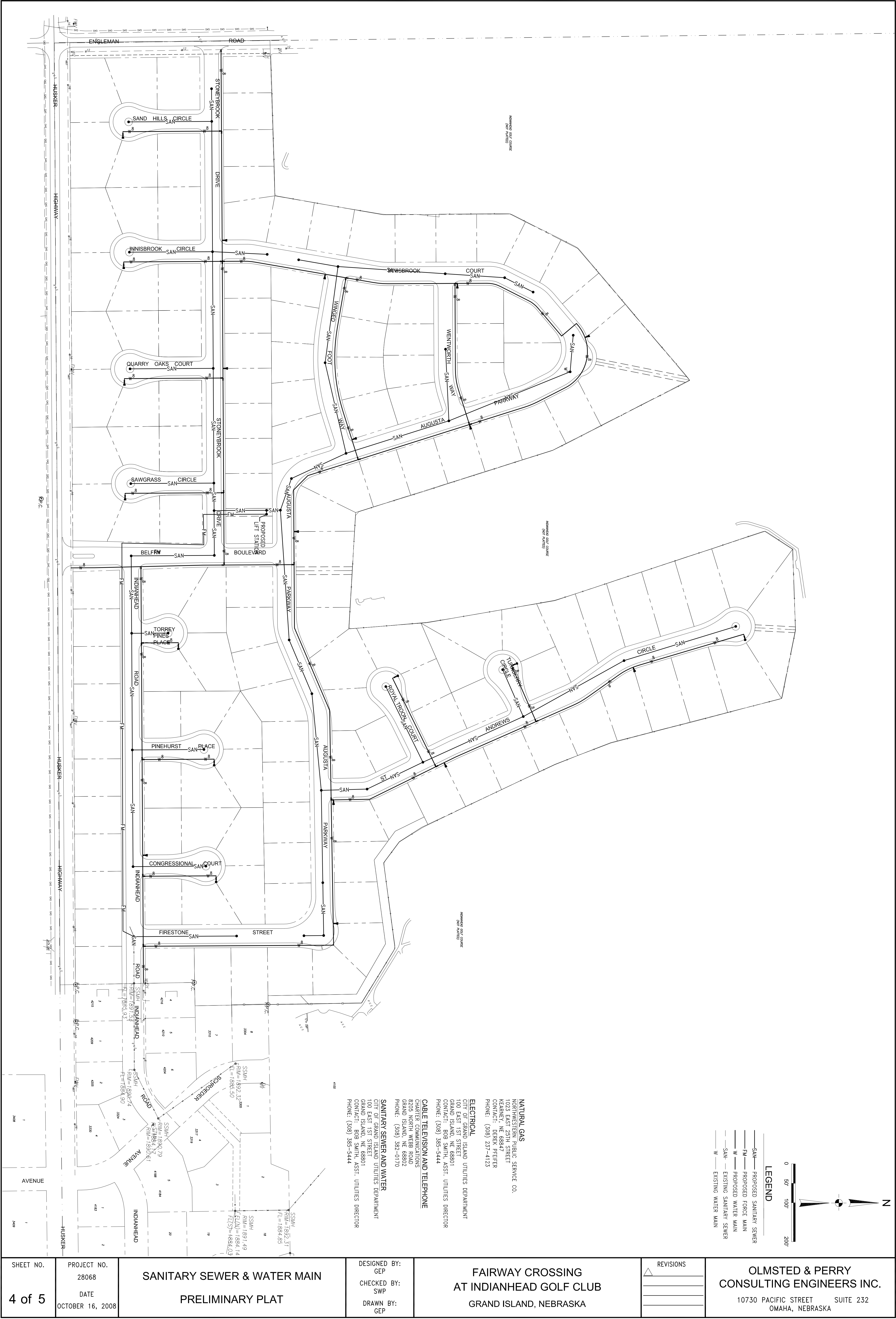
DRAWN BY:
GEP

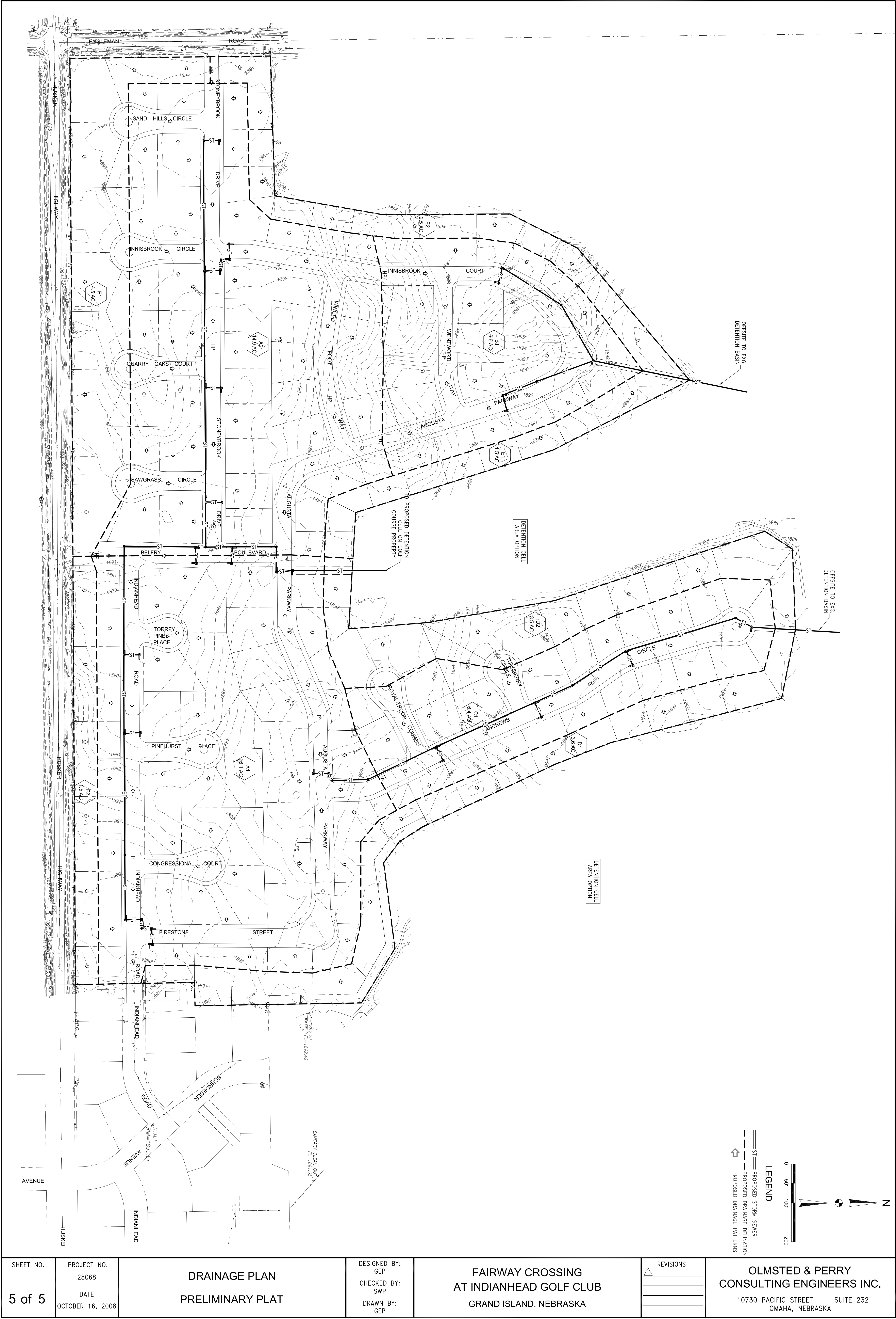
PRELIMINARY PLAT

PROJECT NO.
28068
DATE
OCTOBER 16, 2008

SHEET NO.

1 of 5





SHEET NO. 5 of 5	PROJECT NO. 28068 DATE OCTOBER 16, 2008	DRAINAGE PLAN PRELIMINARY PLAT	DESIGNED BY: GEP CHECKED BY: SWP DRAWN BY: GEP	FAIRWAY CROSSING AT INDIANHEAD GOLF CLUB GRAND ISLAND, NEBRASKA	REVISIONS 	OLMSTED & PERRY CONSULTING ENGINEERS INC. 10730 PACIFIC STREET SUITE 232 OMAHA, NEBRASKA
-------------------------	--	---------------------------------------	---	---	---------------------------	---