



City of Grand Island

Monday, August 24, 2015

Special Meeting/Budget

Item C1

Wastewater 2015/2016 Budget Presentation

Staff Contact: John Collins, P.E. - Public Works Director

2016 Wastewater Budget



Funding Sources

Operating Revenue

☛ Sewer Assessments	\$ 150,000
☛ Sewer Tap Fees	\$ 5,000
☛ Sewer Revenue	\$11,000,000
☛ Sewer Assessment Interest	\$ 30,000
☛ Co-Pay Health Insurance	\$ 55,625
☛ Interest & Dividend Revenue	\$ 8,000
☛ State Revolving Fund	\$15,756,380
☛ Other Revenue	\$ 140,000
☛ Credit Card Rebate	\$ 12,000
☛ Remaining Revenue Bond Balance	<u>\$ 1,438,516</u>
Total:	\$28,595,521

Expenditures

☛ Staff	\$ 2,652,382
☛ Operating	\$ 3,740,713
☛ Debt Service	\$ 2,941,500
☛ Capital	<u>\$19,003,986</u>
☛ Total	\$28,338,581

2016 Overview

Operating Cash Balance	\$ 7,958,868
Revenue	\$28,595,521
Total Resources Available	<u>\$36,554,389</u>
Total Requirements	\$28,338,581
Ending Cash Balance:	\$ 8,215,808

Ending Cash contains \$2.56 million of restricted cash for bond reserve requirements

Wastewater Treatment FY 2016 - FY 2019

	2016	2017	2018	2019
	Budget	Budget	Budget	Budget
Beginning Cash Balance	\$7,958,868	\$ 8,736,933	\$ 8,707,261	\$ 6,770,760
Revenue	\$28,595,521	\$23,236,869	\$11,400,625	\$11,400,625
Transfers In				
Total Resources Available	\$36,554,389	\$ 31,973,802	\$ 20,107,886	\$ 18,171,385
Expenditures	\$28,338,581	\$23,266,541	\$13,337,126	\$11,920,015
Transfers Out				
Total Requirements	\$28,338,581	\$23,266,541	\$13,337,126	\$11,920,015
Ending Cash Balance	\$8,215,808	\$ 8,707,261	\$ 6,770,760	\$ 6,251,370
Unrestricted Cash	\$ 6,176,933	\$ 6,147,261	\$ 4,210,760	\$ 3,691,370
Restricted Cash	\$2,560,000	\$2,560,000	\$2,560,000	\$2,560,000
	\$ 8,736,933	\$ 8,707,261	\$ 6,770,760	\$ 6,251,370
Personnel	\$2,652,382	\$2,798,263	\$2,952,167	\$3,114,537
Operating	\$3,740,713	\$3,852,934	\$3,968,522	\$4,087,578
Debt	\$2,941,500	\$ 3,154,100	\$ 3,301,200	\$ 3,967,900
Capital	\$19,003,986	\$13,461,244	\$3,115,236	\$ 750,000
Total	\$38,338,581	\$33,266,541	\$18,337,126	\$14,420,015

2014/2015/2016 Capital Projects Headworks

- Headworks – (\$21,500,000) – Project is on schedule and is on budget
- Will pay 5% Retainage (\$850,000) during FY 2016
- The 5% Contingency (\$850,000) is available for additional projects
- We will receive septage in a more appropriate manner

2014/2015/2016 Capital Projects Headworks



2015/2016/2017 Capital Projects

North Interceptor Phase 2

- ☛ North Interceptor Phase 2 – [\$10,820,400] (SRF) – 7th and Skypark to 281 and Capital
- ☛ North Interceptor Phase 2b
 - ☛ Done with the exception of Restoration; Within Budget
- ☛ North Interceptor Phase 2a (7th and Skypark to Capital and Broadwell) & 2c (Capital and Webb to Capital and Diers)[Lift Station # 19
 - ☛ Should be done by this time next year

2015/2016/2017 Capital Projects North Interceptor Phase 2



2015/2016 Capital Projects Wildwood

Wildwood Subdivision [\$1,872,600] (SRF) – provide sanitary sewer service to this subdivision

☛ \$100,000 carryover for retainage etc

2015/2016 Capital Projects Wildwood



2015/2016 Capital Projects

US Hwy 281 (530T) Sanitary Sewer

US Highway 281 Sewer Assessment District
[\$2,132,230] (SRF)– extension of sanitary sewer south
along US Highway 281 from the Wildwood Industrial
Park to Interstate 80

🇺🇸 \$100,000 carryover for retainage etc.

2014/2015/2016 Capital Projects HWY 281 (530T) Sanitary Sewer

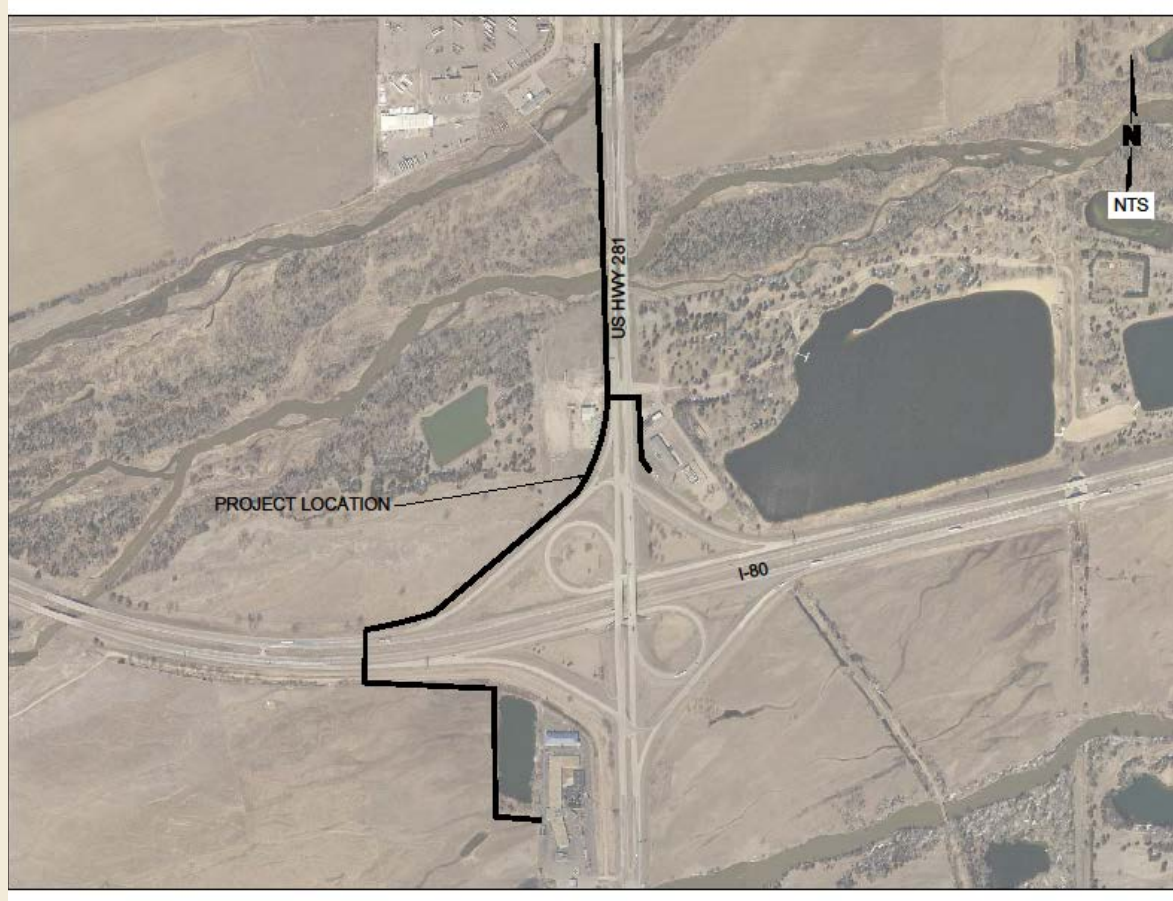


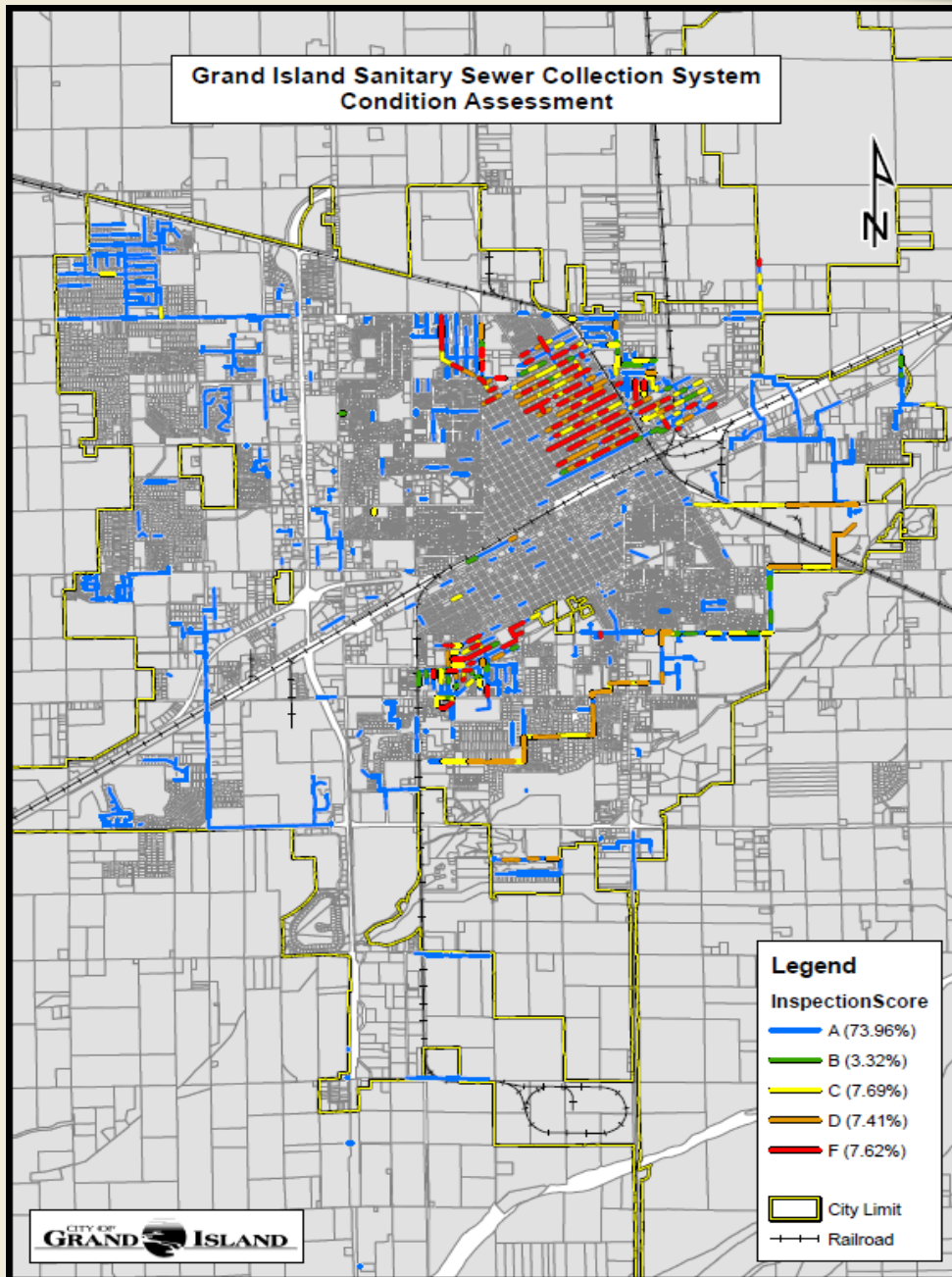
2015/2016 Capital Projects SID #2

Hall County Sanitary Improvement District #2 [\$2,487,846] (SRF)

- Scheduled to start this fall
- Should be done by this time next year
- Will eliminate at least two small wastewater treatment plants

2015/2016 Capital Projects SID#2





30.0% of the Sanitary Sewer Collection System has been assessed:

	A (74.0%)
	B – 3.0%
	C – 8.0%
	D - 7.5%
	F – 7.5%

Wastewater Awards

- DMR-QA 35 Certificate of Recognition for the third year in a row.
- NWEA Gold Safety Award last year. (Finished ahead of Omaha and Lincoln).
- Received the NWEA Scott Wilbur Outstanding Facility Award.