



Hall County Regional Planning Commission

Wednesday, October 01, 2008
Regular Meeting

Item M5

Hornady Sub Final Plat

Insert a narrative here

Staff Contact:

September 18, 2008

Dear Members of the Board:

RE: Final Plat – Hornady Subdivision

For reasons of Section 19-923 Revised Statutes of Nebraska, as amended, there is herewith submitted a final plat of Hornady Subdivision, located North of Stolley Park Road, and West of Arthur Street, in Grand Island, Hall County, Nebraska.

This final plat proposes to create 5 lots on a tract of land in part the Southeast Quarter of the Southeast Quarter (SE1/4, SE1/4) of Section Twenty (20), Township Eleven (11) North, Range Nine (9) West of the 6th P.M., in the City of Grand Island, Hall County, Nebraska. This land consists of approximately 7.822 acres.

You are hereby notified that the Regional Planning Commission will consider this final plat at the next meeting that will be held at 6:00 p.m. on October 1, 2008 in the Council Chambers located in Grand Island's City Hall.

Sincerely,

Chad Nabity, AICP
Planning Director

cc: City Clerk
City Attorney
Director of Public Works
Director of Utilities
Director of Building Inspections
Manager of Postal Operations
Olsson Associates

This letter was sent to the following School Districts 1R, 2, 3, 8, 12, 19, 82, 83, 100, 126.

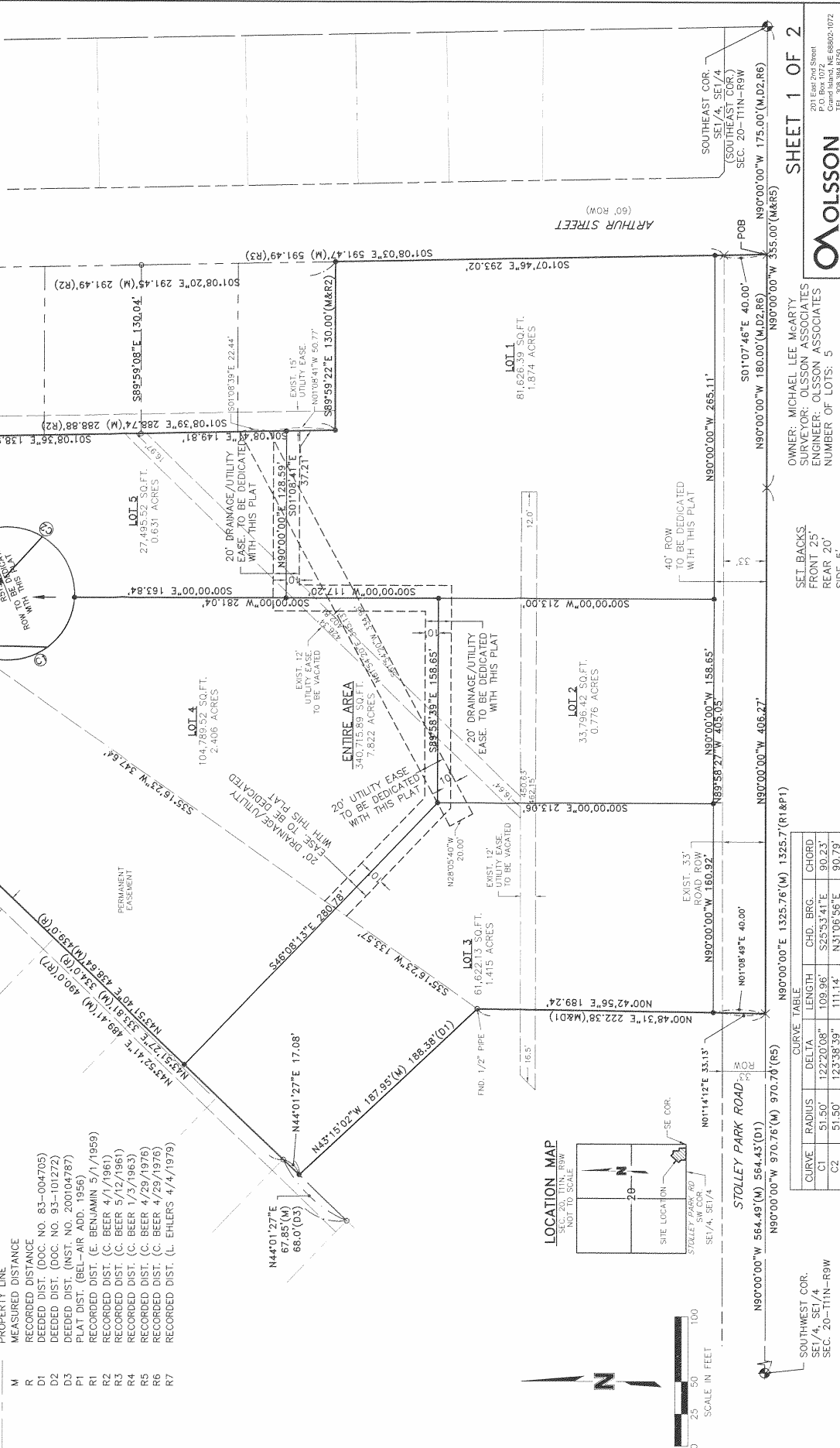


LOCATION MAP



HORNADY SUBDIVISION CITY OF GRAND ISLAND, HALL COUNTY, NEBRASKA FINAL PLAT

SECTION TIES
 SOUTHWEST COR. SEC. 1/4, SE 1/4, SEC. 20-T11N-R9W
 FOUND BRASS CAP W/ DUMPLE
 NW 63.07' TO CHISELED "X" IN EAST SIDE OF
 GALVANIZED LIGHT POLE BASE
 POWER POLE TO PK NAIL W/WASHER IN NW FACE OF
 SE 69.50' TO PK NAIL W/WASHER IN NE FACE OF
 POWER POLE
 SW 59.80' TO CHISELED "X" ON EAST SIDE OF
 GALVANIZED LIGHT POLE BASE
 SOUTHWEST COR. SEC. 1/4, SE 1/4, SEC. 20-T11N-R9W
 FOUND BRASS CAP
 NNW 32.76' TO PK NAIL W/WASHER IN EAST FACE
 OF LIGHT POLE
 ENE 73.35' TO PK NAIL W/WASHER IN SOUTH FACE
 OF LIGHT POLE
 SSE 43.45' TO PK NAIL W/WASHER IN WEST FACE
 OF POWER POLE
 SW 128.23' TO NE CORNER OF CONC. PAD TEE BOX
 #5 (FRISBEE GOLF)



SHEET 1 OF 2
 201 East 2nd Street
 P.O. Box 1072
 Grand Island, NE 68803-1072
 TEL 308.384.8750
 FAX 308.384.8752

OLSSON ASSOCIATES

SET BACKS
 FRONT 25'
 REAR 20'
 SIDE 5'

OWNER: MICHAEL LEE MAARTY
SURVEYOR: OLSSON ASSOCIATES
ENGINEER: OLSSON ASSOCIATES
NUMBER OF LOTS: 5

SECTION TIES
 SOUTHWEST COR. SEC. 1/4, SE 1/4, SEC. 20-T11N-R9W
 FOUND BRASS CAP W/ DUMPLE
 NW 63.07' TO CHISELED "X" IN EAST SIDE OF
 GALVANIZED LIGHT POLE BASE
 POWER POLE TO PK NAIL W/WASHER IN NW FACE OF
 SE 69.50' TO PK NAIL W/WASHER IN NE FACE OF
 POWER POLE
 SW 59.80' TO CHISELED "X" ON EAST SIDE OF
 GALVANIZED LIGHT POLE BASE

SECTION TIES
 SOUTHWEST COR. SEC. 1/4, SE 1/4, SEC. 20-T11N-R9W
 FOUND BRASS CAP W/ DUMPLE
 NW 63.07' TO CHISELED "X" IN EAST SIDE OF
 GALVANIZED LIGHT POLE BASE
 POWER POLE TO PK NAIL W/WASHER IN NW FACE OF
 SE 69.50' TO PK NAIL W/WASHER IN NE FACE OF
 POWER POLE
 SW 59.80' TO CHISELED "X" ON EAST SIDE OF
 GALVANIZED LIGHT POLE BASE

SECTION TIES
 SOUTHWEST COR. SEC. 1/4, SE 1/4, SEC. 20-T11N-R9W
 FOUND BRASS CAP W/ DUMPLE
 NW 63.07' TO CHISELED "X" IN EAST SIDE OF
 GALVANIZED LIGHT POLE BASE
 POWER POLE TO PK NAIL W/WASHER IN NW FACE OF
 SE 69.50' TO PK NAIL W/WASHER IN NE FACE OF
 POWER POLE
 SW 59.80' TO CHISELED "X" ON EAST SIDE OF
 GALVANIZED LIGHT POLE BASE