



Hall County Regional Planning Commission

Wednesday, November 07, 2007

Regular Meeting

Item J1

Final Plat - Hwy 281 Estates Subdivision

*Hwy 281 Estates Subdivision located south of Old Highway 30, between U.S. Highway 281
ad Webb Road, in the City of Grand Island, Hall County, Nebraska (2 lots)*

Staff Contact: Chad Nabity

October 25, 2007

Dear Members of the Board:

RE: Final Plat – Hwy 281 Subdivision.

For reasons of Section 19-923 Revised Statutes of Nebraska, as amended, there is herewith submitted a final plat of Hwy 281 Subdivision, located south of Old Highway 30, between U.S. Highway 281 and Webb Road, Grand Island, Hall County, Nebraska.

This final plat proposes to plat 2 lots on a tract of land comprising a part of the East Half of the Southeast Quarter (E1/2, SE1/4), Section 24, Township Eleven (11) North, Range Ten (10) West of the 6th P.M., in the City of Grand Island, Hall County, Nebraska. This land consists of approximately 34.442 acres.

You are hereby notified that the Regional Planning Commission will consider this final plat at the next meeting that will be held at 6:00 p.m. on November 7, 2007 in the Council Chambers located in Grand Island's City Hall.

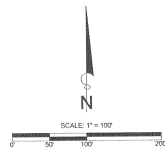
Sincerely,

Chad Nabity, AICP
Planning Director

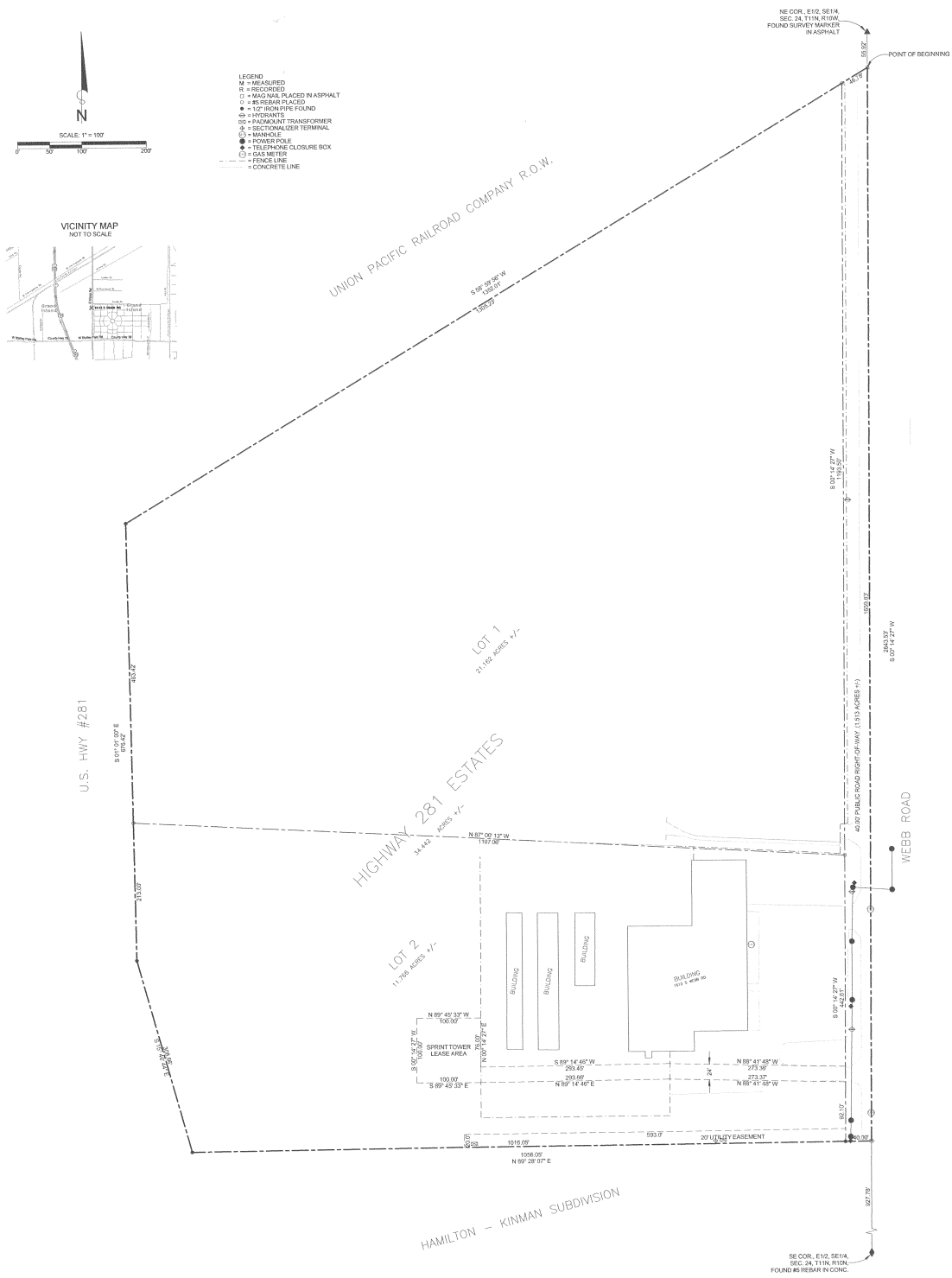
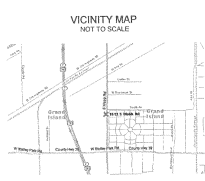
cc: City Clerk
City Attorney
Director of Public Works
Director of Utilities
Director of Building Inspections
Manager of Postal Operations
Katt Surveying

This letter was sent to the following School Districts 1R, 2, 3, 8, 12, 19, 82, 83, 100, 126.





- LEGEND
- M = MEASURED
 - R = RECORDED
 - = MAGNAIL PLACED IN ASPHALT
 - = REBAR PLACED
 - = 1/2" IRON PIPE FOUND
 - ⊕ = HYDRANT
 - ⊞ = SECTIONALIZER TRANSFORMER
 - ⊙ = MANHOLE
 - ⊗ = POWER POLE
 - ⊠ = TELEPHONE CLOSURE BOX
 - = GAS METER
 - = FENCE LINE
 - - - = CONCRETE LINE



HIGHWAY 281 ESTATES

A PART OF THE E1/2, SE1/4, SEC. 24, T11N, R10W,
CITY OF GRAND ISLAND, HALL COUNTY, NEBRASKA

KATT SURVEYING - 1008 S. 1ST ST., AURORA, NE 68018 - 402-866-2229 - KATT.SURVEYING@GMAIL.COM
PROJECT NUMBER 07-LS-908 - DATE 10/18/2007 - DRAWN BY DAF - CHECKED BY DAF