



Hall County Regional Planning Commission

Wednesday, July 11, 2007
Regular Meeting

Item M1

Final Plat Ponderosa Lake estates Sixth Subdivision

Ponderosa Lake Estates Sixth Subdivision located north of West Schimmer Drive, and west of Highway 281, at 72 Ponderosa Drive, Grand Island, Nebraska. (2 lots)

Staff Contact: Chad Nabit

June 27, 2007

Dear Members of the Board:

RE: Preliminary & Final Plats – Ponderosa Lake Estates Sixth Subdivision.

For reasons of Section 19-923 Revised Statutes of Nebraska, as amended, there is herewith submitted a preliminary plat and a final plat of Ponderosa Lake Estates Sixth Subdivision, located west of Highway 281 and north of West Schimmer Drive.

This preliminary plat and final plat proposes to create 2 lots on a tract of land comprising all of Block Six (6), Ponderosa Lake Estates Subdivision in the City of Grand Island, Nebraska. This land consists of approximately 3.463 acres.

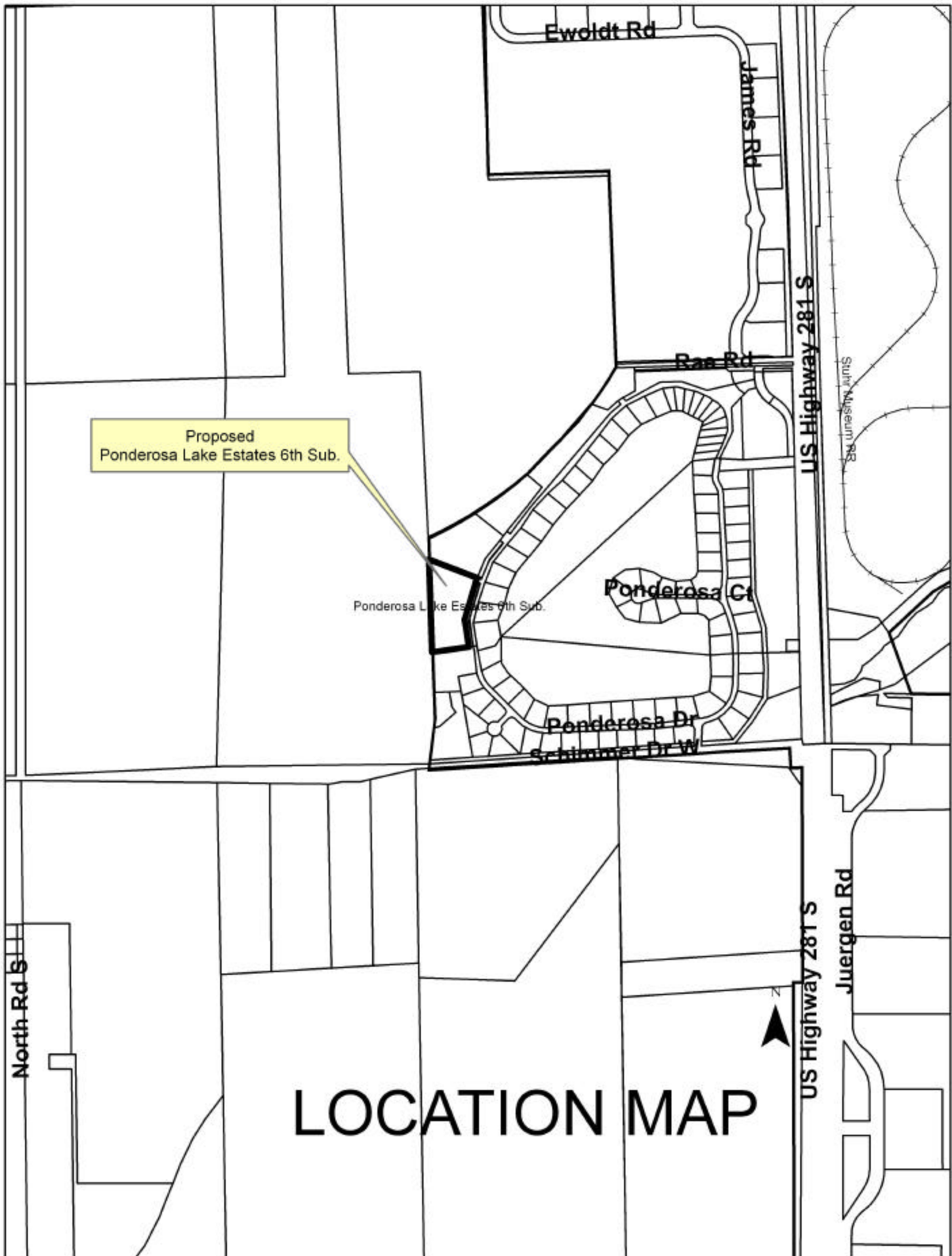
You are hereby notified that the Regional Planning Commission will consider this preliminary plat and final plat at the next meeting that will be held at 6:00 p.m. on July 11, 2007 in the Council Chambers located in Grand Island's City Hall.

Sincerely,

Chad Nabity, AICP
Planning Director

cc: City Clerk
City Attorney
Director of Public Works
Director of Utilities
Director of Building Inspections
Manager of Postal Operations
Benjamin & Associates

This letter was sent to the following School Districts 1R, 2, 3, 8, 12, 19, 82, 83, 100, 126.



Proposed
Ponderosa Lake Estates 6th Sub.

Ponderosa Lake Estates 6th Sub.

Ponderosa Ct

Ponderosa Dr
S. Hammer Dr W

North Rd S

Ewoldt Rd

James Rd

Ponderosa Rd

US Highway 281 S

Stuart Museum Rd

US Highway 281 S

Juergen Rd

LOCATION MAP

