



# Hall County Regional Planning Commission

Wednesday, February 07, 2007  
Regular Meeting

## Item J2

### Final Plat - Prairie Acres Subdivision

*Prairie Acres Subdivision located west of Highway 281 between 13th Street and State Street.  
(76 lots) This subdivision was submitted in compliance with the approved preliminary plat.*

Staff Contact: Chad Nabity

January 23, 2007

Dear Members of the Board:

**RE: Final Plat – Prairie Acres Subdivision.**

For reasons of Section 19-923 Revised Statutes of Nebraska, as amended, there is herewith submitted a final plat of Prairie Acres Subdivision, located west of Hwy. 281 between 13<sup>th</sup> Street and State Street, Grand Island Nebraska.

This final plat proposes to create 76 lots on a tract of land comprising a part of the E1/2 SW1/4 12-T11N-R10W, Grand Island, Hall County, Nebraska. This land consists of approximately 28.894 acres.

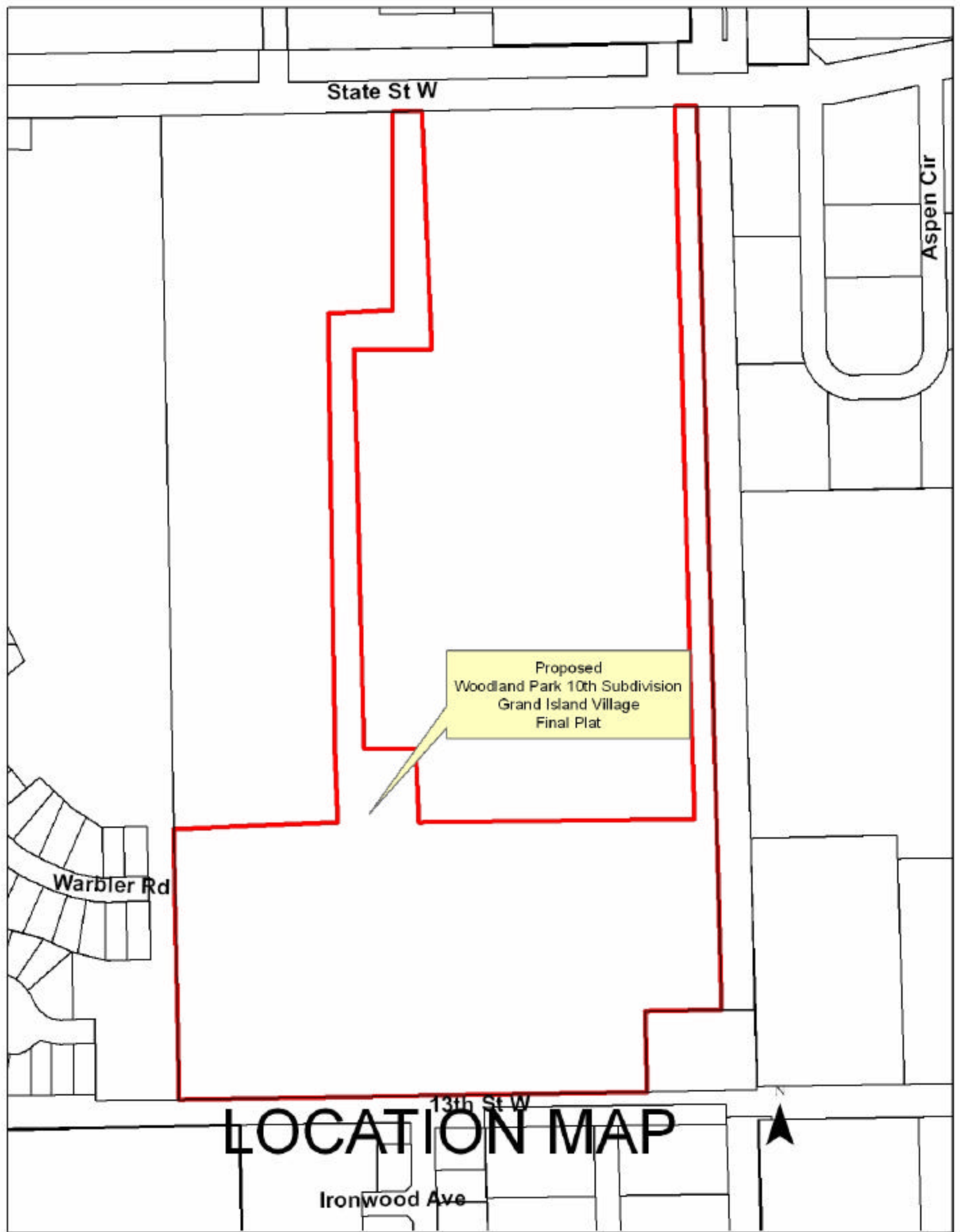
You are hereby notified that the Regional Planning Commission will consider this preliminary plat at the next meeting that will be held at 6:00 p.m. on February 7, 2007 in the Council Chambers located in Grand Island's City Hall.

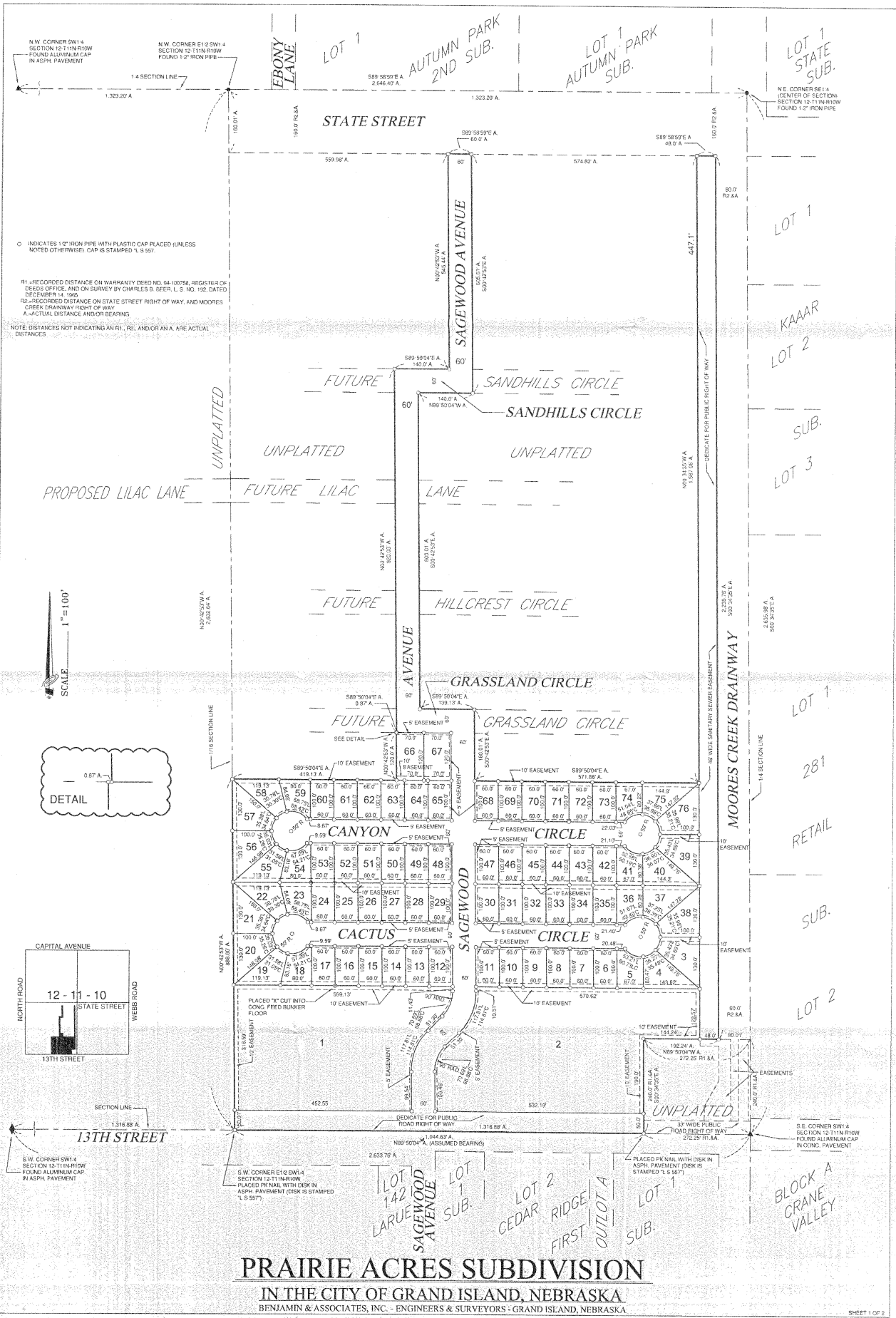
Sincerely,

Chad Nabity, AICP  
Planning Director

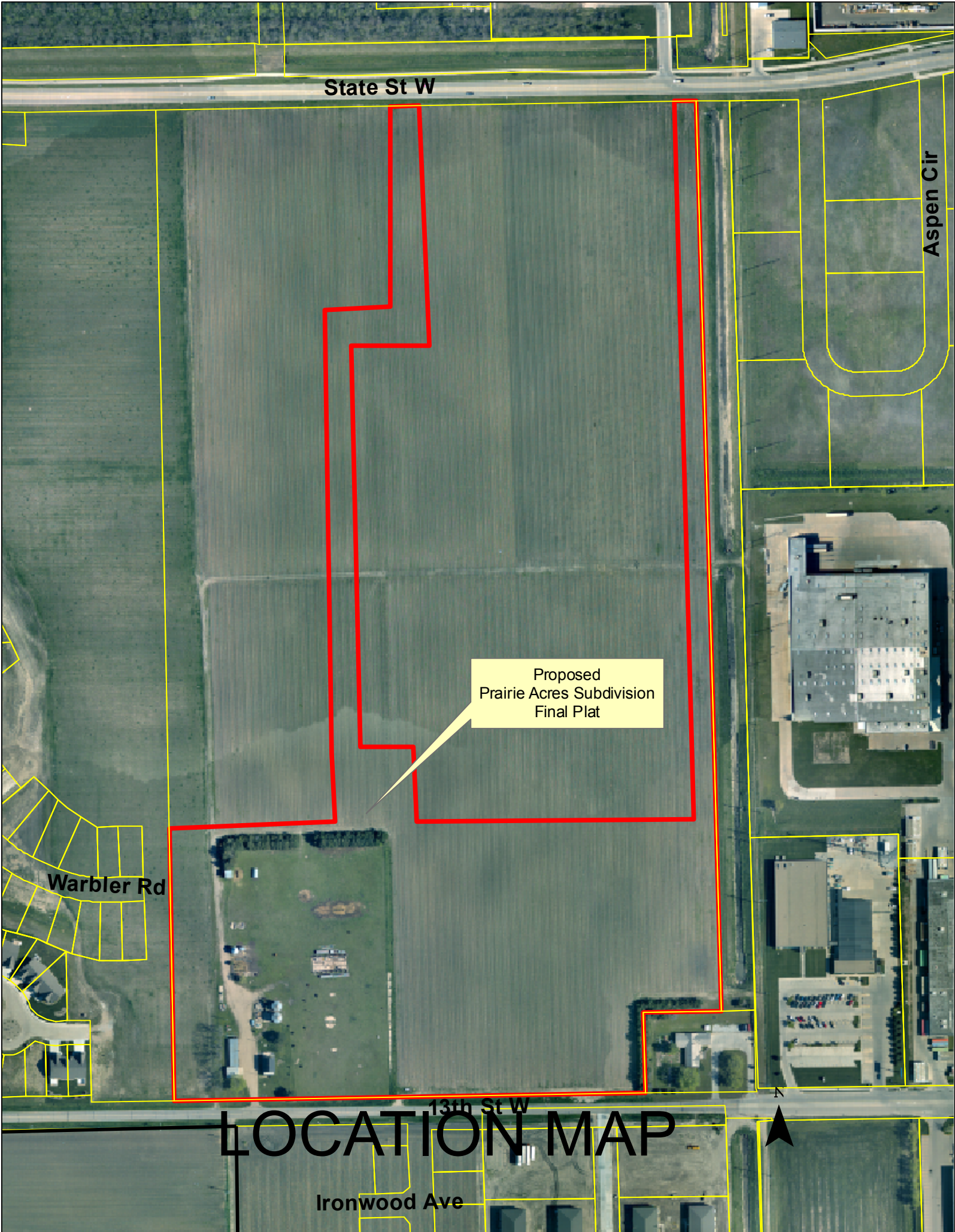
cc: City Clerk  
City Attorney  
Director of Public Works  
Director of Utilities  
Director of Building Inspections  
Manager of Postal Operations  
Benjamin & Associates

This letter was sent to the following School Districts 1R, 2, 3, 8, 12, 16, 19, 82, 83, 100, 126.





**PRAIRIE ACRES SUBDIVISION**  
**IN THE CITY OF GRAND ISLAND, NEBRASKA**  
BENJAMIN & ASSOCIATES, INC. - ENGINEERS & SURVEYORS - GRAND ISLAND, NEBRASKA



State St W

Aspen Cir

Proposed  
Prairie Acres Subdivision  
Final Plat

Warbler Rd

13th St W  
**LOCATION MAP**

Ironwood Ave

