



# Hall County Regional Planning Commission

Wednesday, February 07, 2007  
Regular Meeting

## Item F1

### **Adoption of Grand Island 1 & 6 Year Street Improvement Plan**

*Adoption of the Grand Island 1 & 6 Year Street Improvement Plan. (C-10-2007GI) (Hearing, Discussion, Action)*

Staff Contact: Chad Nabity

# **Council Agenda Memo**

**From:** Steven P. Riehle, Public Works Director

**Meeting:** January 23, 2007

**Subject:** Approving Referral of the One & Six Year Street Improvement Program to the Regional Planning Commission

**Item #'s:**

**Presenter(s):** Steven P. Riehle, Public Works Director

## **Background**

Attached is staff's recommended One and Six Year Street Improvement Program. Adoption of a One and Six Year Street Improvement Program is required by State law as part of the requirements to receive approximately three million dollars of gas tax funds each year.

## **Discussion**

Our recommendation for the review of the proposed plan is as follows:

- Tuesday, January 23, 2007 – City Council refers the plan to the Regional Planning Commission.
- Wednesday, February 7, 2007 – Regional Planning Commission conducts a Public Hearing and forwards a recommendation to the City Council.
- Tuesday, February 13, 2007 – City Council hears a presentation from staff, conducts a Public Hearing, and passes a Resolution adopting the plan.
- Prepare and submit the report to the Nebraska Department of roads by March 1, 2007.

## **Alternatives**

It appears that the Council has the following alternatives concerning the issue at hand. The Council may:

1. Move to approve the referral of the One and Six Year Street Improvement Program to the Regional Planning Commission.
2. Refer the issue to a Committee.
3. Postpone the issue to future date.
4. Take no action on the issue.

### **Recommendation**

City Administration recommends that the Council refer the One and Six Year Street Improvement Program to the Regional Planning Commission.

### **Sample Motion**

Motion to approve the referral of the One and Six Year Street Improvement Program.

		2007 CONSTRUCTION SEASON					
				(All Costs in \$1,000's)			
	No.	Project Description	Total Project	State Federal Other	City STP	City G.O. Bond	City Cap. Impr. Fund
Street Construction							
M310-	475	2007 Paving Petition Program	\$200			\$200	
M310-	500	Widen Capital Avenue - Moores Creek Drainway to Webb Road - Construction	\$4,500		\$3,375		\$1,125
M310-	351	Hwy 30 - Grant to Greenwich - NDOR Project (FY 2007)	\$3,749	\$2,999	\$750		
M310-	508	Wasmer Cell Construction	\$315				\$315
M310-	537	Realign Walnut Middle School entrance with 15th St. & install traffic signal	\$232	\$232			
M310-	407	S. Locust - HWY 34 to I-80 - Additional Landscaping	\$60	\$48			\$12
Street Resurfacing							
M310-	476	Annual Resurfacing Program (2007)	\$450				\$450
Drainage & Flood Control							
M310-	461	Moores,Prairie, & Silver Creek Flood Control for Northwest Grand Island - Construction	\$780	\$420			\$250
M310-	512	Detention Cell/Ditch Restoration	\$50				\$50
Other							
M310-	389	Hike/Bike Trail Const. along Floodway - Hall County Park to S. Locust	\$435	\$348			\$87
M310-	385	Geographic Information System (Continued Development & Maintenance)	\$25				\$25
M310-	513	Misc. Safety Enhancements	\$50				\$50
TOTALS:			\$10,846	\$4,047	\$4,125	\$200	\$2,364



2008 Construction Season						
(All costs in \$1,000s)						
No.	Project Description	Total Project	State Federal Other	City STP	City G.O. Bond	City Cap. Impr. Fund
<b>Street Construction</b>						
M310- 409	S. Locust Grading and Median Drains for New Lanes	\$720		\$576		\$144
M310- 341	S. Locust I-80 to Floodway, Surfacing New Lanes	\$2,750		\$2,200		\$550
M310- 490	Annual Paving Petition Program (2008)	\$600			\$600	
M310-	Traffic Signal @ Rea Road/HWY 281	\$135				\$135
M310- 353	Faidley Ave. - Moores Creek Ditch to North Rd.	\$1,250			\$1,250	
M310- 538	Round-a-bout - Capital Ave/North Rd Intersection	\$360				\$360
M310- 267	Two Bridge Replacements - Blaine @ Wood River (Engineering Design)	\$45				\$45
M310- 458	Traffic Signal - HWY 281/Wildwood Dr.	\$170	\$85			\$85
<b>Street Resurfacing</b>						
M310- 491	Annual Resurfacing Program (2008)	\$500				\$500
<b>Drainage &amp; Flood Control</b>						
M310- 493	Concrete Lining of Drainage Ditches(2008) Moores,Prairie, & Silver Creek Flood Control - Construction for Northwest Grand Island	\$50				\$50
M310- 461	Detention Cell/Ditch Restoration	\$780	\$420			\$360
M310- 514	PVIP Cells & Drainage	\$50				\$50
M310- 485	Independence Avenue	\$127				\$127
M310- 507	Drainage(Design/ROW)	\$80				\$80
M310- 382	Moores Creek Drainage - along North Road from Rogers Well to S. of Old Potash HWY	\$209				\$209
<b>Other</b>						
M310- 414	Hike/Bike Trail Construction, S. Locust to Morman Island. (Parallel to I-80)	\$600	\$600			
M310- 385	Geographic Information System (Continued development and maintenance)	\$25				\$25
M310- 515	Misc. Safety Enhancements	\$150				\$150
M310- 408	Hike/Bike Bridge Superstructure over two Platte River Channels	\$390	\$312			\$78
M310- 431	Hike/Bike Trail Construction, S. Locust - Floodway to I-80	\$600	\$480			\$120
<b>TOTALS</b>		<b>\$9,591</b>	<b>\$1,897</b>	<b>\$2,776</b>	<b>\$1,850</b>	<b>\$3,068</b>

		2009 Construction Season					
			(All costs in \$1,000s)				
	No.	Project Description	Total Project	State Federal Other	City STP	City G.O. Bond	City Cap. Impr. Fund
Street Construction							
M310-	501	Annual Paving Petition Program (2009)	\$750			\$750	
M310-	540	Intersection Improvements @ 13th & North Road	\$300				\$300
M310-	528	State St/Diers Ave - Intersection Improvements	\$390				\$390
M310-	535	Realign Barr Mid. School entrance with Riverside Dr & signal @ Stolley/Adams	\$360	\$306			\$54
M310-	536	Traffic Signal - Locust St./Fonner Park Heartland Event Center Center Entrance	\$150				\$150
M310-	487A	Stolley Park Rd widening, Locust to Fonner Park Ent. (Eng Design & ROW)	\$150			\$150	
M310-	539	3rd Street Widening - Adams to Eddy St.	\$90				\$90
M310-	267	Two Bridge Replacements - Blaine @ Wood River (Construction)	\$250	\$120			\$130
Street Resurfacing							
M310-	503	Annual Resurfacing Program (2009)	\$500				\$500
Drainage & Flood Control							
M310-	505	Concrete Lining of Drainage Ditches(2009)	\$50				\$50
M310-	461	Moores,Prairie, & Silver Creek Flood Control - Construction	\$780	\$420			\$360
M310-	516	Detention Cell/Ditch Restoration	\$50				\$50
M310-	485	PVIP Cells & Drainage	\$272				\$272
M310-	459	Construct Drainway from CCC area to Wood River	\$425				\$425
M310-	511	Moore's Creek Drainage - along North Road from Old Potash HWY to Edna Dr.	\$150				\$150
M310-	507	Independence Ave. Drainage (Construction)	\$350				\$350
Other							
M310-	497	Illuminating Lighting - HWY 281, Stolley to Old Potash	\$250				\$250
M310-	385	Geographic Information System (Continued development and maintenance)	\$25				\$25
M310-	518	Misc. Safety Enhancements	\$150				\$150
M310-	447	Hike/Bike Trail Construction - State St. to Veterans Home	\$600	\$480			\$120
TOTALS			\$6,042	\$1,326	\$0	\$900	\$3,816

		<b>2010 Construction Season</b>					
			(All costs in \$1,000s)				
	<b>No.</b>	<b>Project Description</b>	<b>Total Project</b>	<b>State Federal Other</b>	<b>City STP</b>	<b>City G.O. Bond</b>	<b>City Cap. Impr. Fund</b>
<b>Street Construction</b>							
M310-	519	Annual Paving Petition Program (2010)	\$750			\$750	
M310-	533	Husker Highway Widening - from 1/4 Mi. west of HWY 281 easterly to Highway 281	\$1,200		\$900		\$300
M310-	480	Independence Avenue Paving - Shanna St. to Manchester Ave.	\$1,050			\$1,050	
M310-	334	Widen Eddy Street Underpass to 5-lanes on south end	\$175				\$175
M310-	487	Stolley Park Rd widening, Locust to Fonner Park Entrance (Construction)	\$1,200			\$1,200	
<b>Street Resurfacing</b>							
M310-	522	Annual Resurfacing Program (2010)	\$500				\$500
<b>Drainage &amp; Flood Control</b>							
M310-	523	Annual Major Drainage Development (2010)	\$500				\$500
M310-	524	Concrete Lining of Drainage Ditches(2010)	\$50				\$50
M310-	461	Moore's, Prairie, & Silver Creek Flood Control - Construction	\$780	\$420			\$360
M310-	525	Detention Cell/Ditch Restoration	\$50				\$50
<b>Other</b>							
M310-	385	Geographic Information System (Continued development and maintenance)	\$25				\$25
M310-	527	Misc. Safety Enhancements	\$150				\$150
M310-	517	Hike/Bike Trail Const. - Veterans Home to Eagle Scout Park	\$600	\$480			\$120
<b>TOTALS:</b>			<b>\$7,030</b>	<b>\$900</b>	<b>\$900</b>	<b>\$3,000</b>	<b>\$2,230</b>

2011 Construction Season						
(All costs in \$1,000s)						
No.	Project Description	Total Project	State Federal Other	City STP	City G.O. Bond	City Cap. Impr. Fund
<b>Street Construction</b>						
M310- 541	Annual Paving Petition Program (2011)	\$750			\$750	
M310- 89	Capital Ave - Webb to Broadwell Ave	\$1,000			\$1,000	
M310- 498	S. Locust - Illumination Lighting S. City Limits to I-80	\$1,000				\$1,000
M310- 521	Swift Road - WWTP to Shady Bend Rd	\$450				\$450
M310- 352	Hwy 30 - Hwy 281 to west City Limits - NDOR Project	\$9,449	\$7,559		\$1,890	
<b>Street Resurfacing</b>						
M310- 542	Annual Resurfacing Program (2011)	\$500				\$500
<b>Drainage &amp; Flood Control</b>						
M310- 543	Annual Major Drainage Development (2011)	\$500				\$500
M310- 544	Concrete Lining of Drainage Ditches(2011)	\$50				\$50
M310- 461	Moore's, Prairie, & Silver Creek Flood Control - Construction	\$780	\$420			\$360
M310- 525	Detention Cell/Ditch Restoration	\$50				\$50
<b>Other</b>						
M310- 385	Geographic Information System (Continued development and maintenance)	\$25				\$25
M310- 416	BLDG Improvements at West Yard	\$375				\$375
M310- 526	Hike/Bike Trail Const. along Floodway - S. Locust to Platte River	\$600	\$480			\$120
M310- 527	Misc. Safety Enhancements	\$150				\$150
<b>TOTALS</b>		<b>\$15,679</b>	<b>\$8,459</b>	<b>\$0</b>	<b>\$3,640</b>	<b>\$3,580</b>

2012 and After Construction						
			(All costs in \$1,000s)			
No.	Project Description	Total Project	State Federal Other	City STP	City G.O. Bond	City Cap. Impr. Fund
<b>Street Construction</b>						
M310-	Annual Paving Petition Program (2012)	\$750			\$750	
M310- 520	Capital Ave - Broadwell to St. Paul Road	\$1,000			\$1,000	
M310- 499	Grade Separation Broadwell @ UPRR	\$12,000	\$600		\$11,400	
M310- 502	East Bypass Grade Separation @ UPRR	\$16,000	\$800		\$15,200	
M310- 411	Hwy 34 - Locust to Hwy 281 - NDOR Project	\$6,679	\$5,343		\$1,336	
<b>Street Resurfacing</b>						
M310-	Annual Resurfacing Program (2012)	\$500				\$500
<b>Drainage &amp; Flood Control</b>						
M310-	Annual Major Drainage Development (2012)	\$500				\$500
M310-	Concrete Lining of Drainage Ditches(2012)	\$50				\$50
M310- 461	Moore's, Prairie, & Silver Creek Flood Control - Construction (Due remainder of Project)	\$4,680	\$2,520			\$2,160
M310- 525	Detention Cell/Ditch Restoration	\$50				\$50
<b>Other</b>						
M310- 385	Geographic Information System (Continued development and maintenance)	\$25				\$25
M310- 416	BLDG Improvements at West Yard	\$375				\$375
M310- 527	Misc. Safety Enhancements	\$150				\$150
<b>TOTALS</b>		<b>\$42,759</b>	<b>\$9,263</b>	<b>\$0</b>	<b>\$29,686</b>	<b>\$3,810</b>

## **Discussion of 2007 Projects for the One and Six Year Street Improvement Program**

**M 310 – 475**

**Description**

2007 Paving Petition Program

**Remarks**

\$200,000 is budgeted for potential street improvement districts.

**M310 – 500**

**Description**

Widen Capital Avenue from the Moores Creek Drainway to Webb Road

**Remarks**

Construction is anticipated to begin in late spring or early summer of 2007. The project will widen Capital Avenue to four (4) lanes from the Moores Creek Drainway to Carleton Avenue, six (6) lanes from Carleton Avenue to Diers Avenue, seven (7) lanes from Carleton Avenue to US HWY 281, six (6) lanes from US HWY 281 to St. Patrick Avenue, and five (5) lanes from St. Patrick Avenue to Webb Road. The project includes a new Sanitary Sewer force main, storm sewer upgrades, a bike trail along the south side, roadway lighting, traffic signals, and a new concrete curb and gutter roadway. (See exhibit)

**M 310 – 351**

**Description**

HWY 30 – Grant to Greenwich; NDOR Project

**Remarks**

The city is contributing 20 percent towards this Department of Roads project. Bids are scheduled to open in July of 2007 with construction starting in the fall. The project will widen US HWY 30 (2<sup>nd</sup> Street) to five (5) lanes with raised medians at the Broadwell Avenue intersection.

**M 310 - 508**

**Description**

Wasmer Detention Cell Construction

**Remarks**

The detention cell was excavated to provide fill for the new Law Enforcement Center on East US HWY 30. Upgraded storm sewer

will be constructed from the NDOR's US HWY 30 widening project to the detention cell in the summer of 2007. (See exhibit)

**M 310 – 537**

**Description**

Realign Walnut Middle School Entrance with 15<sup>th</sup> Street and Install a Traffic Signal

**Remarks**

The application for Safe Routes to School funding for the project is in the final selection process. The City of Grand Island will be notified if the project is funded in April 2007. (See exhibit)

**M 310 - 407**

**Description**

S. Locust – HWY 34 to I-80; Additional Landscaping

**Remarks**

The NDOR is administering a county federal aid project to plant trees along Locust Street. The city will use federal funds for the trees planted inside the city limits.

**M 310 - 461**

**Description**

Moores, Prairie, & Silver Creek flood control for Northwest Grand Island

**Remarks**

The Central Platte NRD has awarded a contract for Phase I of the 10 year flood control project. Phase I builds a large detention cell on property at the former Cornhusker Army Ammunition Plant.

**M310 – 513**

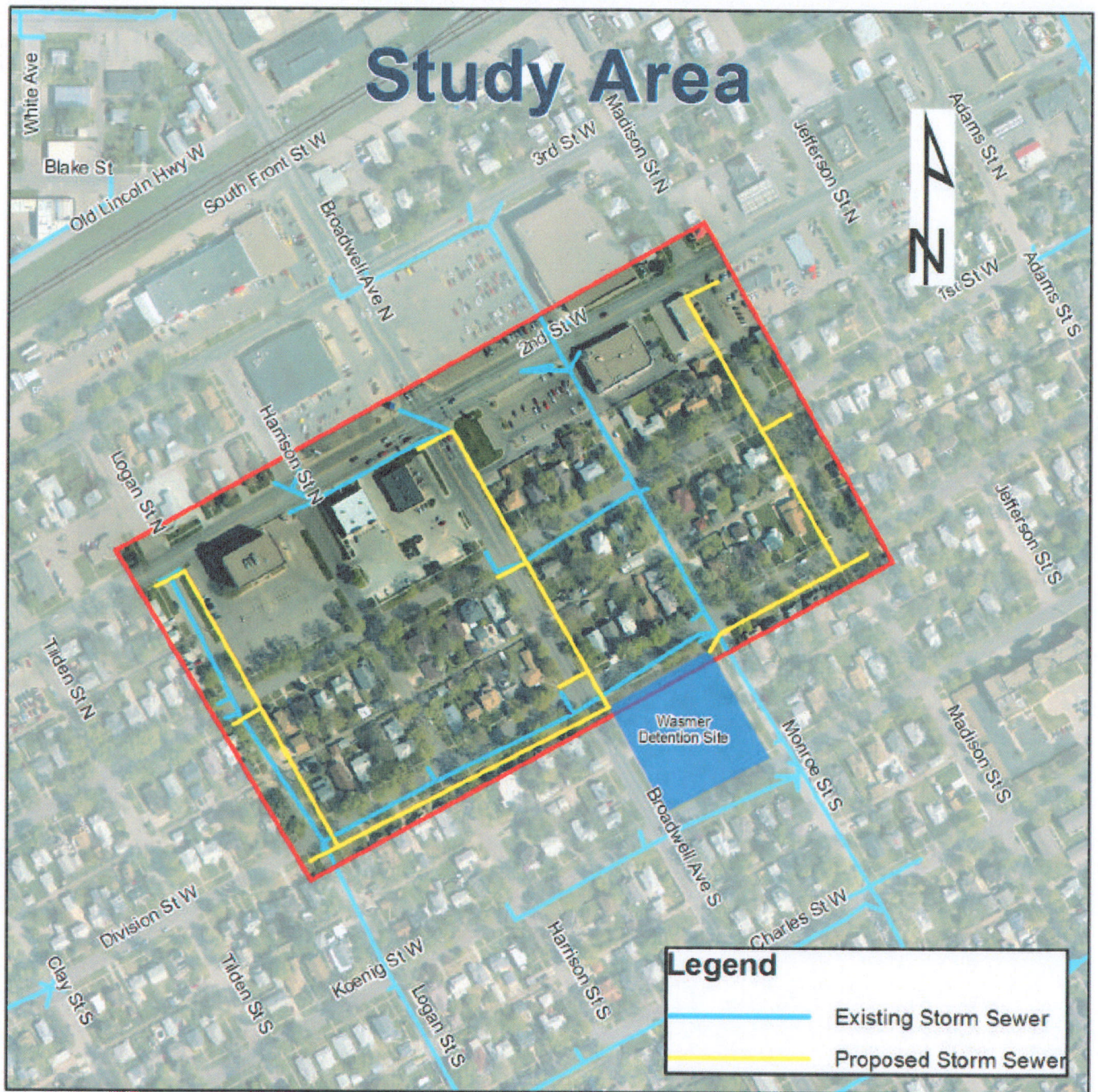
**Description**

Miscellaneous Safety Improvements

**Remarks**

The project will re-align the intersection of 10<sup>th</sup> Street and Adams / Broadwell to improve safety. (See exhibit)





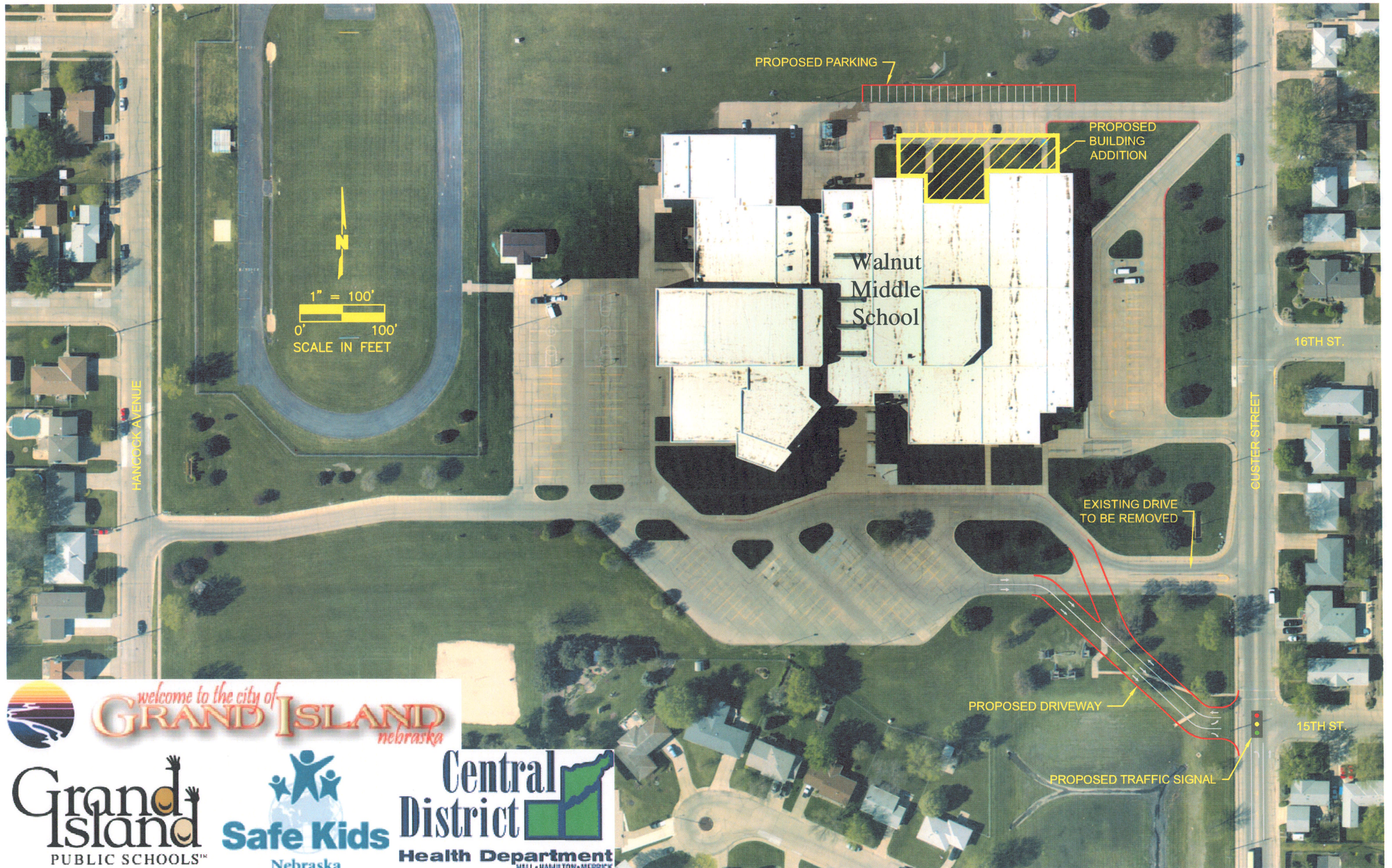
Wasmer Detention Cell



# 10TH AND ADAMS/BROADWELL









LOCATION MAP

