



# Hall County Regional Planning Commission

Wednesday, November 01, 2006  
Regular Meeting

## Item L1

### **Preliminary Plat - Prairie Acres Subdivision**

*Prairie Acres Subdivision located south of West State Street and west of Highway 281. (190 lots)*

Staff Contact: Chad Nabity

October 19, 2006

Dear Members of the Board:

**RE: Preliminary Plat – Prairie Acres Subdivision.**

For reasons of Section 19-923 Revised Statutes of Nebraska, as amended, there is herewith submitted a preliminary plat of Prairie Acres Subdivision, located west of Hwy. 281 between 13<sup>th</sup> Street and State Street, Grand Island Nebraska.

This preliminary plat proposes to create 190 lots on a tract of land comprising a part of the E1/2 SW1/4 12-T11N-R10W, Grand Island, Hall County, Nebraska. This land consists of approximately 69.4 acres.

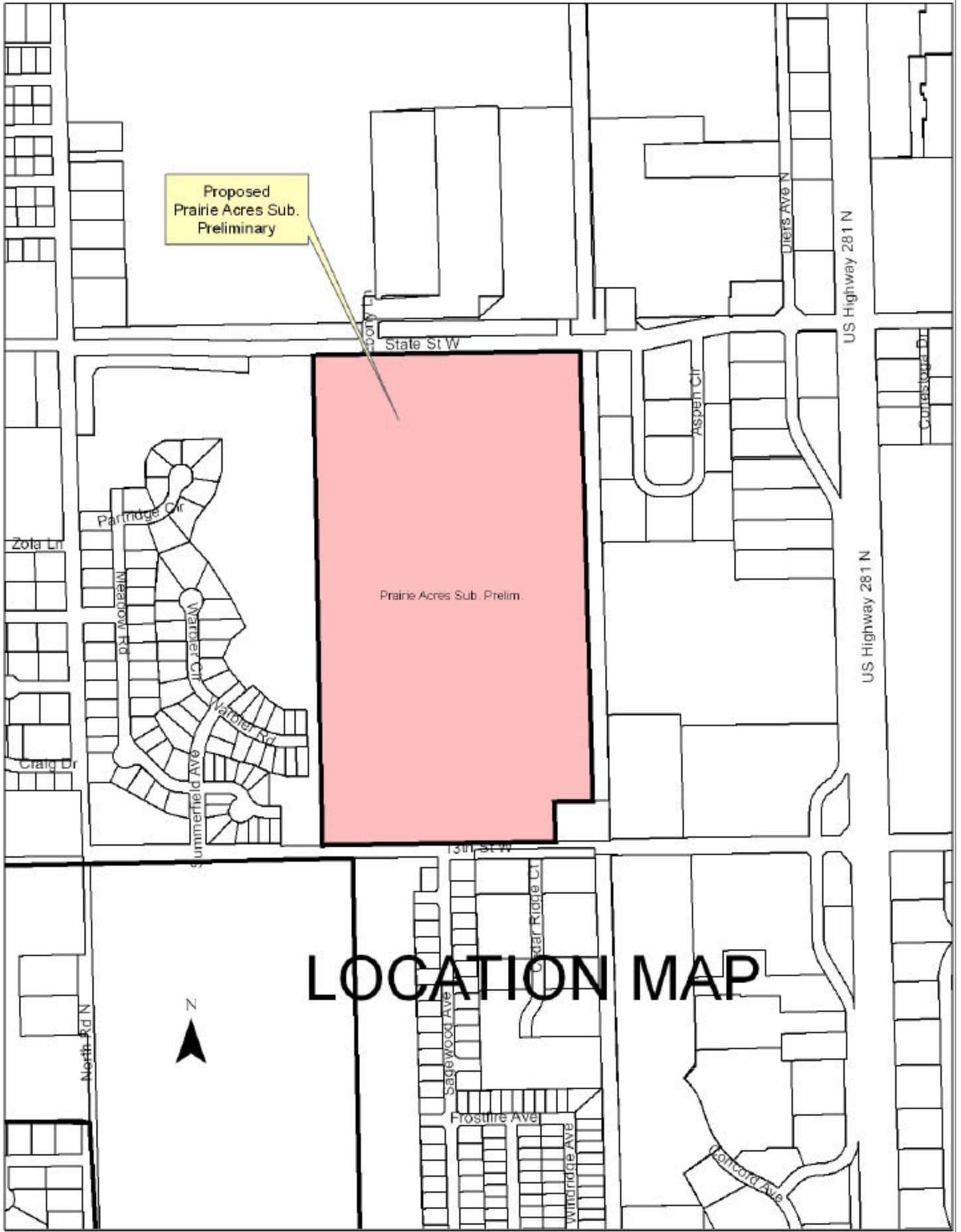
You are hereby notified that the Regional Planning Commission will consider this preliminary plat at the next meeting that will be held at 6:00 p.m. on November 1, 2006 in the Council Chambers located in Grand Island's City Hall.

Sincerely,

Chad Nabity, AICP  
Planning Director

cc: City Clerk  
City Attorney  
Director of Public Works  
Director of Utilities  
Director of Building Inspections  
Manager of Postal Operations  
Benjamin & Associates

This letter was sent to the following School Districts 1R, 2, 3, 8, 12, 16, 19, 82, 83, 100, 126.



Proposed  
Prairie Acres Sub.  
Preliminary

Liberty Ln

State St W

Diets Ave N

US Highway 281 N

Aspen Cir

Curtis Ave Dr

Partridge Cir

Zola Ln

Wentworth Rd

Warrior Cir

Valdier Rd

Craig Dr

Summerfield Ave

Prairie Acres Sub. Prelim.

US Highway 281 N

13th St W

LOCATION MAP



North Rd N

Sagewood Ave

Ogden Ridge Ct

Frostline Ave

Windridge Ave

Concord Ave



SCALE: 1"=120'

LEGAL DESCRIPTION

A tract of land comprising a part of the East Half of the Southwest Quarter (E1/2 SW1/4) of Section Twelve (12), Township Eleven (11) North, Range Ten (10) West of the 6th P.M., in the City of Grand Island, Hall County, Nebraska, and containing approximately 69.4 acres, more or less.

"300' RADIUS MAP"  
PROPOSED  
PRAIRIE ACRES SUBDIVISION