



Hall County Regional Planning Commission

Wednesday, October 04, 2006
Regular Meeting

Item M1

Francis Second Subdivision

*Francis Second Subdivision located east of Carleton Avenue and south of Curran Avenue.
(16 lots)*

Staff Contact: Chad Nabity

September 20, 2006

Dear Members of the Board:

RE: Preliminary & Final Plats – Francis Second Subdivision.

For reasons of Section 19-923 Revised Statutes of Nebraska, as amended, there is herewith submitted a preliminary plat and a final plat of Francis Second Subdivision, located east of Carleton Avenue and south of Curran Avenue.

This preliminary plat and final plat proposes to create 16 lots on a tract of land comprising all of Lot Seven (7) and the North Half (N1/2) of Lot Eight (8), Bosselman Second Subdivision. This land consists of approximately 1.291 acres.

You are hereby notified that the Regional Planning Commission will consider this preliminary plat and final plat at the next meeting that will be held at 6:00 p.m. on October 4, 2006 in the Council Chambers located in Grand Island's City Hall.

Sincerely,

Chad Nabity, AICP
Planning Director

cc: City Clerk
City Attorney
Director of Public Works
Director of Utilities
Director of Building Inspections
Manager of Postal Operations
Rockwell & Associates

This letter was sent to the following School Districts 1R, 2, 3, 8, 12, 16, 19, 82, 83, 100, 126.



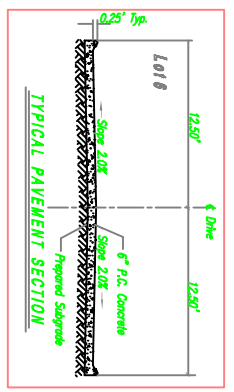
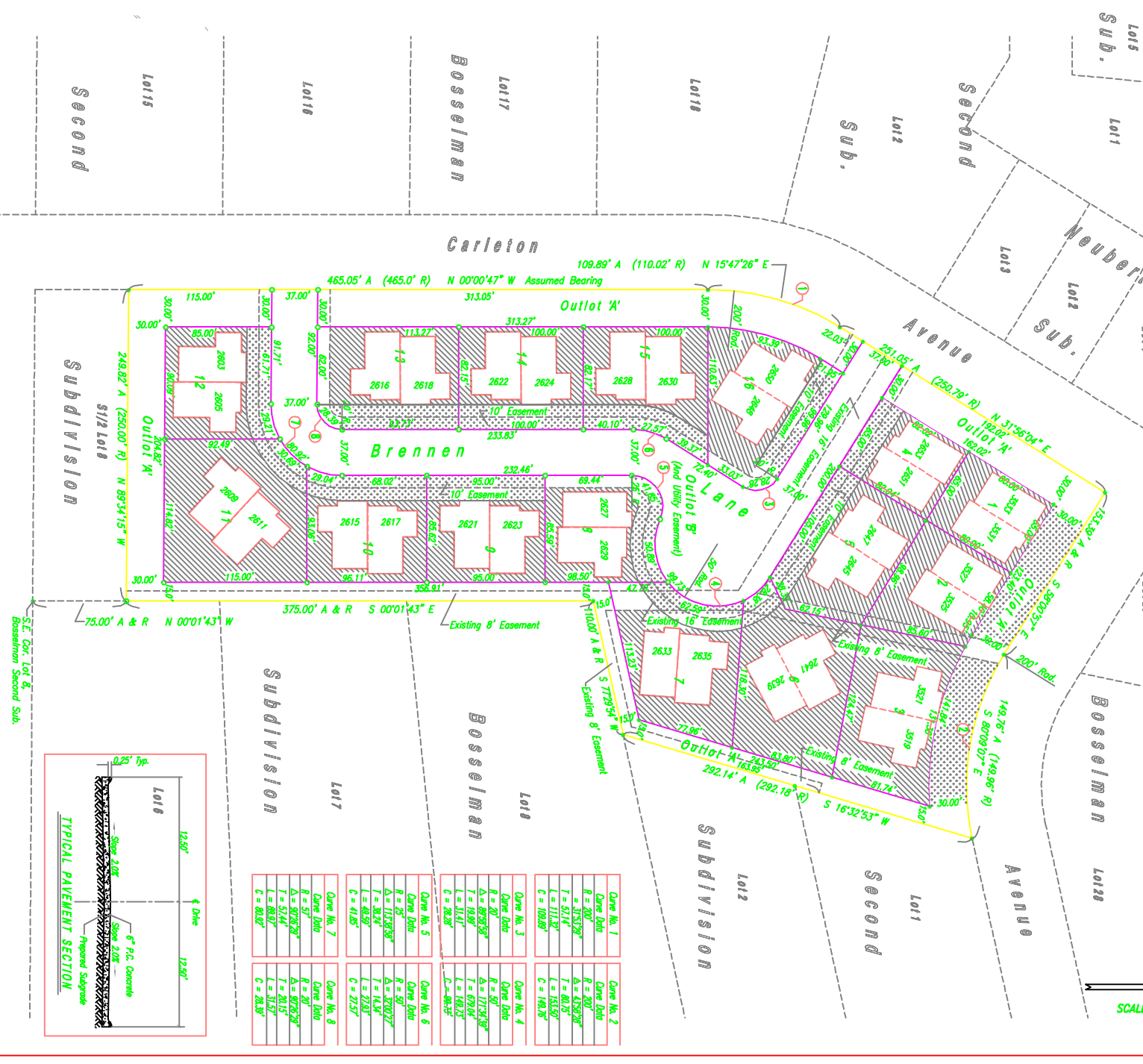
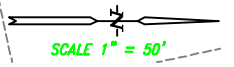
Proposed
Francis 2nd Sub.

Francis 2nd Sub

LOCATION MAP

Oakwood
Curran
Sub.
Lots 1015, 1011, 1012, 1013, 1014, 1018, 1019

LEGEND
 ○ - Indicates 1/2" Iron Pipe Found Unless Otherwise Noted
 ○ - Indicates 1/2" Iron Pipe w/Survey Cap Placed Unless Otherwise Noted
 A - Indicates ACTUAL Distances
 R - Indicates RECORDED Distances
 All Distances Shown On Curves Are Chord Distances
 [Hatched Area] - Indicates Possible Driveway Locations
 [Hatched Area] - Indicates Building Area
 Lot 27



Curve No. 1 Curve Data R = 200' Δ = 375.72° T = 57.14' L = 111.32' C = 109.89'	Curve No. 2 Curve Data R = 200' Δ = 453.28° T = 81.75' L = 164.75' C = 164.75'	Curve No. 3 Curve Data R = 90' Δ = 69.35° T = 19.99' L = 31.61' C = 28.28'	Curve No. 4 Curve Data R = 90' Δ = 77.34° T = 67.914' L = 169.13' C = 86.19'	Curve No. 5 Curve Data R = 90' Δ = 81.473° T = 11.4127° L = 40.59' C = 41.85'	Curve No. 6 Curve Data R = 90' Δ = 91.0227° T = 14.0227° L = 47.63' C = 27.57'	Curve No. 7 Curve Data R = 307.93° Δ = 807.29° T = 57.44' L = 80.97' C = 81.82'	Curve No. 8 Curve Data R = 307.93° Δ = 807.29° T = 81.57' L = 81.57' C = 28.35'
--	--	--	--	---	--	---	---

DEVELOPMENT PLAN
FRANCIS SECOND SUBDIVISION
IN THE CITY OF GRAND ISLAND, NEBRASKA

ROCKWELL AND ASSOC. LLC - ENGINEERING & SURVEYING - GRAND ISLAND, NEBRASKA Sheet No. 1011