



Hall County Regional Planning Commission

Wednesday, October 04, 2006
Regular Meeting

Item L4

Prairie Acres Subdivision

Prairie Acres Subdivision located south of State Street and west of Highway 281. (190 lots)

Staff Contact: Chad Nabity

September 20, 2006

Dear Members of the Board:

RE: Preliminary Plat – Prairie Acres Subdivision.

For reasons of Section 19-923 Revised Statutes of Nebraska, as amended, there is herewith submitted a preliminary plat of Prairie Acres Subdivision, located west of Hwy. 281 between 13th Street and State Street, Grand Island Nebraska.

This preliminary plat proposes to create 190 lots on a tract of land comprising a part of the E1/2 SW1/4 12-T11N-R10W, Grand Island, Hall County, Nebraska. This land consists of approximately 69.4 acres.

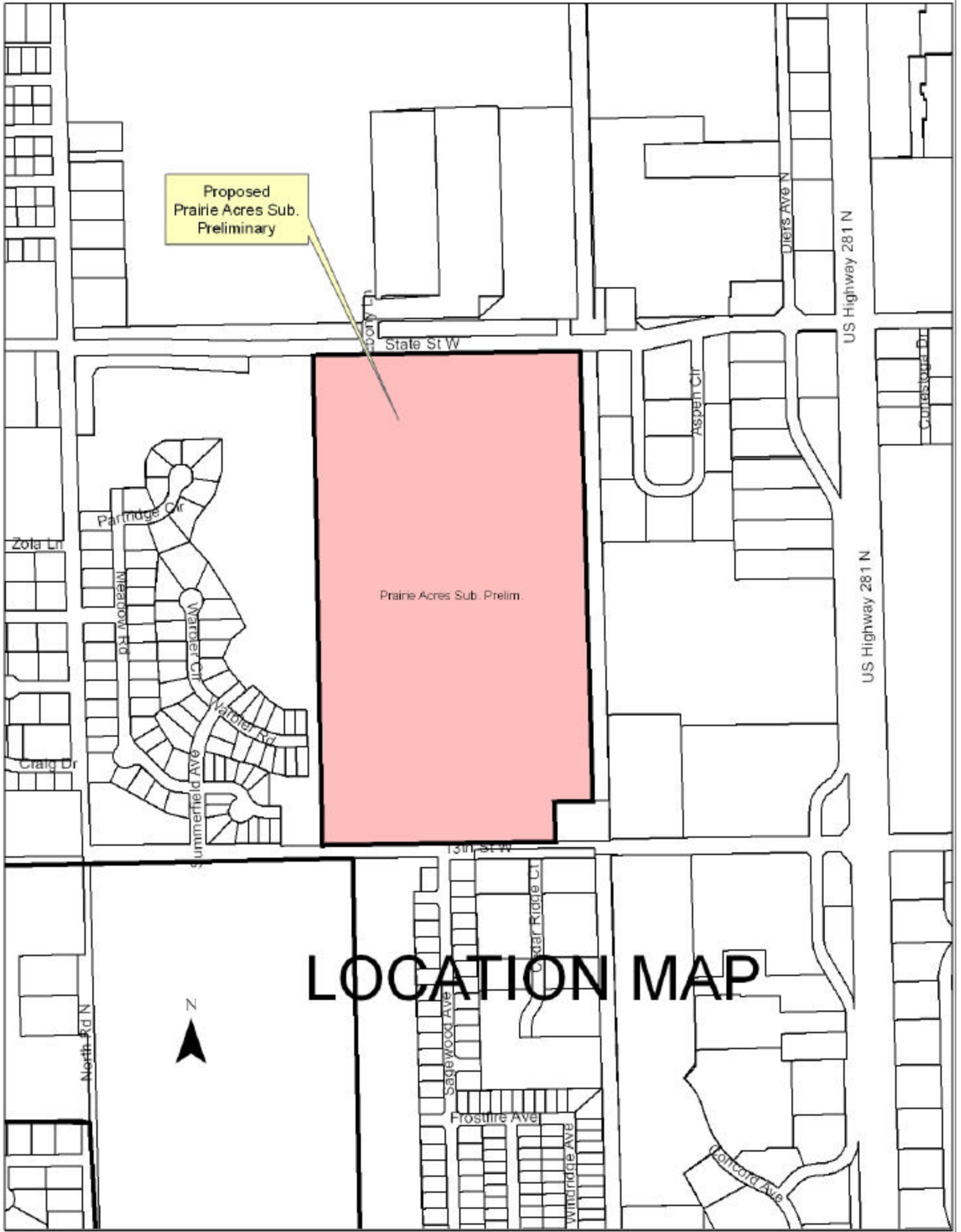
You are hereby notified that the Regional Planning Commission will consider this preliminary plat at the next meeting that will be held at 6:00 p.m. on October 4, 2006 in the Council Chambers located in Grand Island's City Hall.

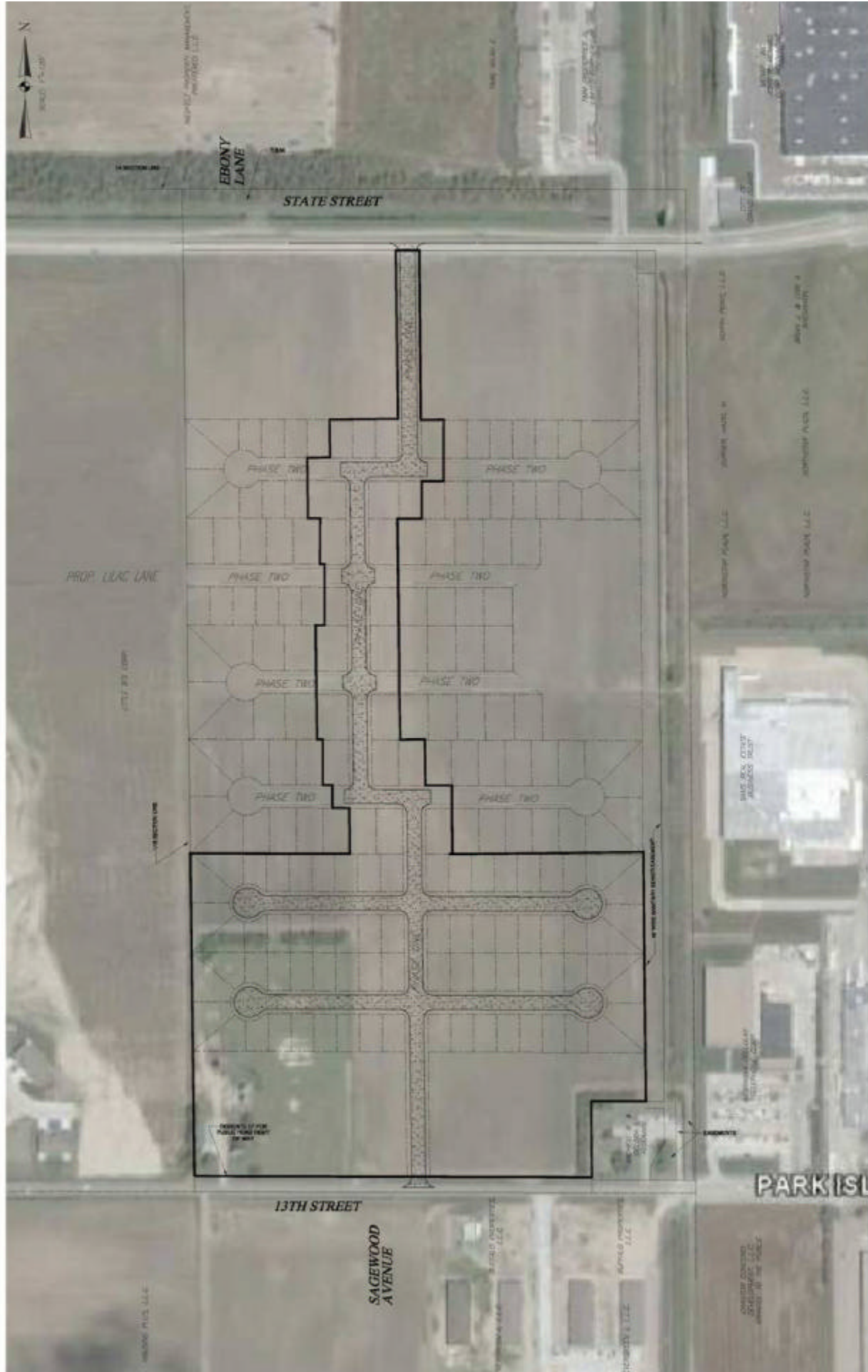
Sincerely,

Chad Nabity, AICP
Planning Director

cc: City Clerk
City Attorney
Director of Public Works
Director of Utilities
Director of Building Inspections
Manager of Postal Operations
Benjamin & Associates

This letter was sent to the following School Districts 1R, 2, 3, 8, 12, 16, 19, 82, 83, 100, 126.





"300' RADIUS MAP"
 PROPOSED
 PRAIRIE ACRES SUBDIVISION

ALL DESCRIPTIONS
 are of land comprising a part of the First Plat of the Improvement Quarter Section 20, T19N, R10E, E1/4 of the 31st and 32nd Townships, 10th County, Nebraska, and containing approximately 89.4 acres, more or less.