



Hall County Regional Planning Commission

Wednesday, October 04, 2006
Regular Meeting

Item L1

Preliminary Plat - Francis Second Subdivision

Francis Second Subdivision located east of Carleton Ave. and south of Curran Ave. (16 lots)

Staff Contact: Chad Nabity

September 20, 2006

Dear Members of the Board:

RE: Preliminary & Final Plats – Francis Second Subdivision.

For reasons of Section 19-923 Revised Statutes of Nebraska, as amended, there is herewith submitted a preliminary plat and a final plat of Francis Second Subdivision, located east of Carleton Avenue and south of Curran Avenue.

This preliminary plat and final plat proposes to create 16 lots on a tract of land comprising all of Lot Seven (7) and the North Half (N1/2) of Lot Eight (8), Bosselman Second Subdivision. This land consists of approximately 1.291 acres.

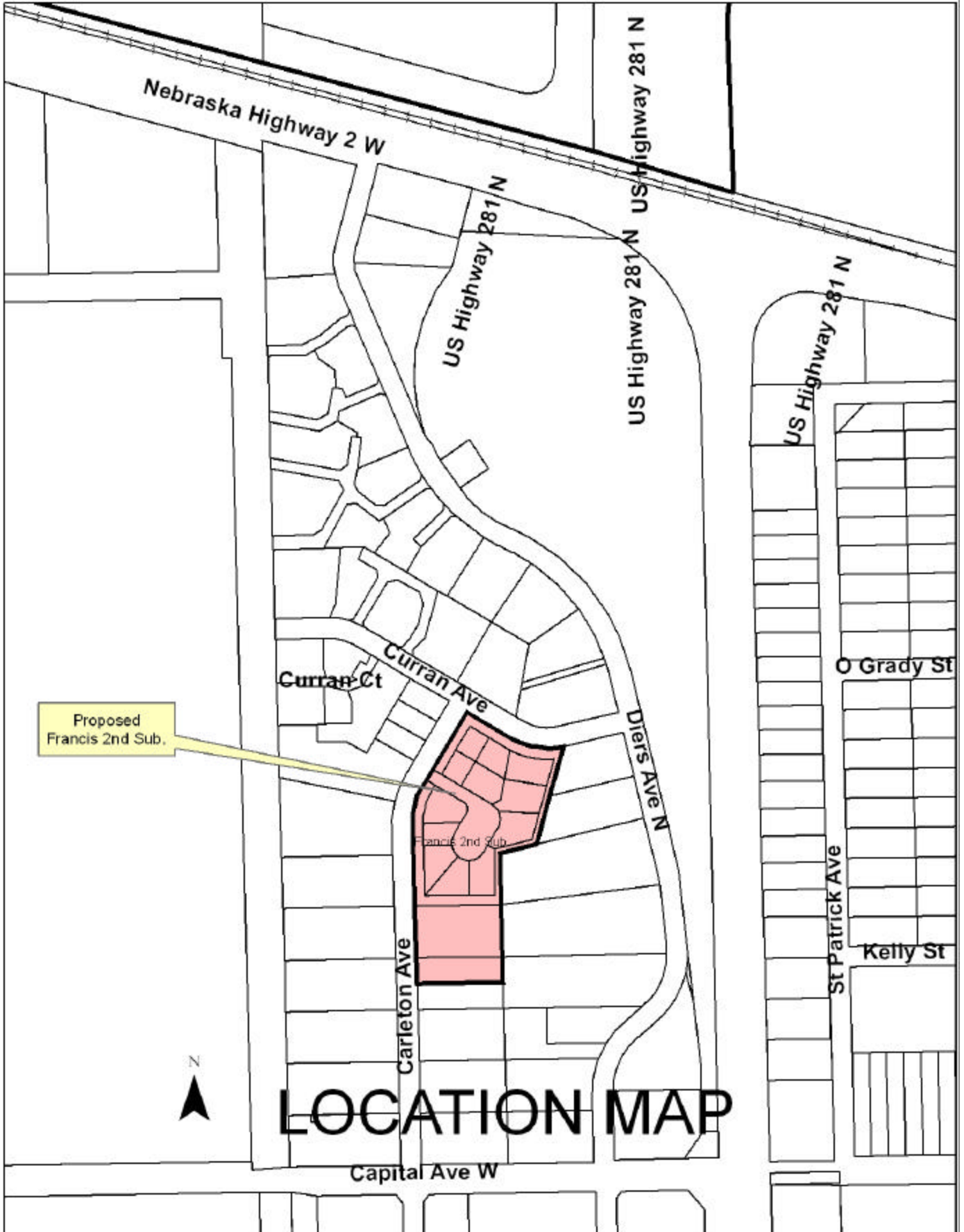
You are hereby notified that the Regional Planning Commission will consider this preliminary plat and final plat at the next meeting that will be held at 6:00 p.m. on October 4, 2006 in the Council Chambers located in Grand Island's City Hall.

Sincerely,

Chad Nabity, AICP
Planning Director

cc: City Clerk
City Attorney
Director of Public Works
Director of Utilities
Director of Building Inspections
Manager of Postal Operations
Rockwell & Associates

This letter was sent to the following School Districts 1R, 2, 3, 8, 12, 16, 19, 82, 83, 100, 126.



Proposed
Francis 2nd Sub.

Francis 2nd Sub

LOCATION MAP