



# Hall County Regional Planning Commission

Wednesday, October 04, 2006  
Regular Meeting

## Item J4

### **Sterling Estates Subdivision**

*Sterling Estates Subdivision is located east of North Rd., and north of West State St. (54 lots)*

Staff Contact: Chad Nabity

September 20, 2006

Dear Members of the Board:

**RE: Final Plat – Sterling Estates Subdivision.**

For reasons of Section 19-923 Revised Statutes of Nebraska, as amended, there is herewith submitted a final plat of Sterling Estates Subdivision, located east of North Road and north of West State Street.

This final plat proposes to create 54 lots on a tract of land consisting of part of the Northwest Quarter (NW1/4) of Section 12, Township 11 North, Range 10 West of the 6<sup>th</sup> P.m., City of Grand Island, Hall County, Nebraska. This land consists of approximately 25.13 acres more or less.

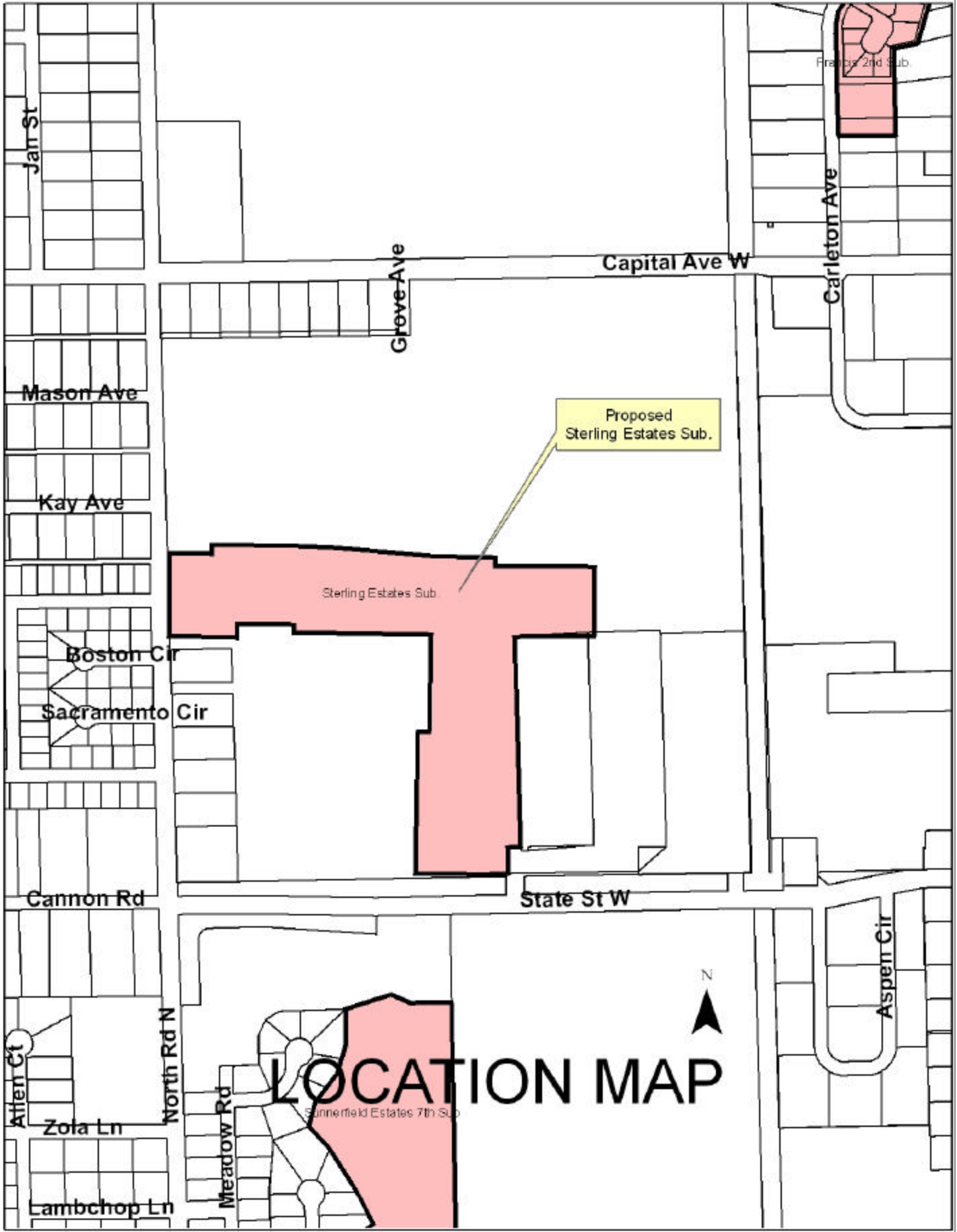
You are hereby notified that the Regional Planning Commission will consider this final plat at the next meeting that will be held at 6:00 p.m. on October 4, 2006 in the Council Chambers located in Grand Island's City Hall.

Sincerely,

Chad Nabity, AICP  
Planning Director

cc: City Clerk  
City Attorney  
Director of Public Works  
Director of Utilities  
Director of Building Inspections  
Manager of Postal Operations  
Rockwell & Associates

This letter was sent to the following School Districts 1R, 2, 3, 8, 12, 16, 19, 82, 83, 100, 126.



Francis 2nd Sub.

Jan St

Grove Ave

Capital Ave W

Carleton Ave

Mason Ave

Kay Ave

Proposed Sterling Estates Sub.

Sterling Estates Sub.

Boston Cir

Sacramento Cir

Cannon Rd

State St W

Aspen Cir

N

# LOCATION MAP

Sunnerfield Estates 7th Sub.

Allen Ct

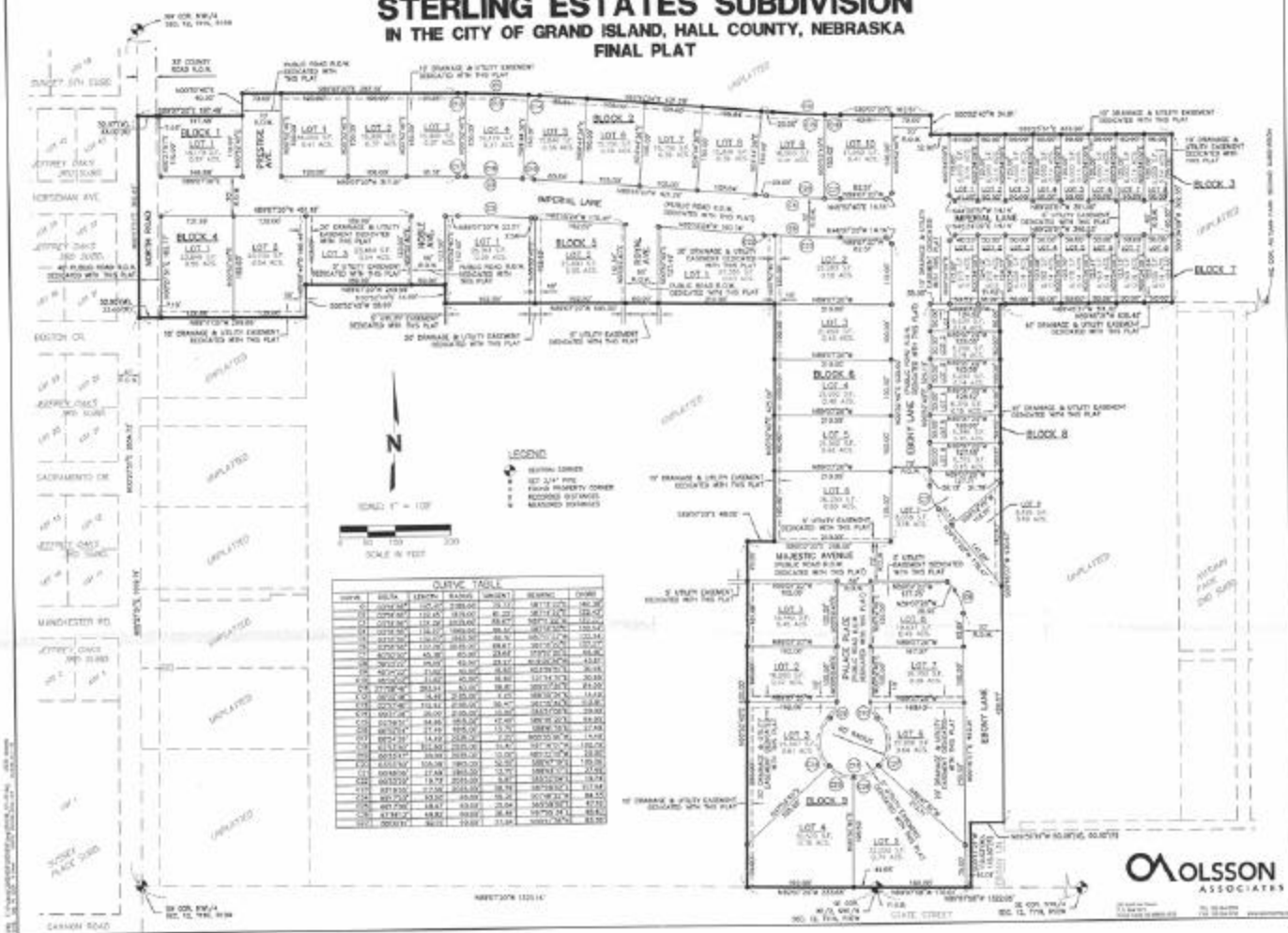
Zola Ln

North Rd N

Meadow Rd

Lambchop Ln

# STERLING ESTATES SUBDIVISION IN THE CITY OF GRAND ISLAND, HALL COUNTY, NEBRASKA FINAL PLAT



**CURVE TABLE**

STATION	CHORD	CHORD BEARING	ARC BEARING	CHORD BEARING	CHORD
1+00.00	100.00	00°00'00"	90°00'00"	00°00'00"	100.00
1+01.57	99.70	00°03'00"	89°57'00"	00°03'00"	99.70
1+03.14	99.40	00°06'00"	89°54'00"	00°06'00"	99.40
1+04.71	99.10	00°09'00"	89°51'00"	00°09'00"	99.10
1+06.28	98.80	00°12'00"	89°48'00"	00°12'00"	98.80
1+07.85	98.50	00°15'00"	89°45'00"	00°15'00"	98.50
1+09.42	98.20	00°18'00"	89°42'00"	00°18'00"	98.20
1+10.99	97.90	00°21'00"	89°39'00"	00°21'00"	97.90
1+12.56	97.60	00°24'00"	89°36'00"	00°24'00"	97.60
1+14.13	97.30	00°27'00"	89°33'00"	00°27'00"	97.30
1+15.70	97.00	00°30'00"	89°30'00"	00°30'00"	97.00
1+17.27	96.70	00°33'00"	89°27'00"	00°33'00"	96.70
1+18.84	96.40	00°36'00"	89°24'00"	00°36'00"	96.40
1+20.41	96.10	00°39'00"	89°21'00"	00°39'00"	96.10
1+21.98	95.80	00°42'00"	89°18'00"	00°42'00"	95.80
1+23.55	95.50	00°45'00"	89°15'00"	00°45'00"	95.50
1+25.12	95.20	00°48'00"	89°12'00"	00°48'00"	95.20
1+26.69	94.90	00°51'00"	89°09'00"	00°51'00"	94.90
1+28.26	94.60	00°54'00"	89°06'00"	00°54'00"	94.60
1+29.83	94.30	00°57'00"	89°03'00"	00°57'00"	94.30
1+31.40	94.00	01°00'00"	89°00'00"	01°00'00"	94.00
1+32.97	93.70	01°03'00"	88°57'00"	01°03'00"	93.70
1+34.54	93.40	01°06'00"	88°54'00"	01°06'00"	93.40
1+36.11	93.10	01°09'00"	88°51'00"	01°09'00"	93.10
1+37.68	92.80	01°12'00"	88°48'00"	01°12'00"	92.80
1+39.25	92.50	01°15'00"	88°45'00"	01°15'00"	92.50
1+40.82	92.20	01°18'00"	88°42'00"	01°18'00"	92.20
1+42.39	91.90	01°21'00"	88°39'00"	01°21'00"	91.90
1+43.96	91.60	01°24'00"	88°36'00"	01°24'00"	91.60
1+45.53	91.30	01°27'00"	88°33'00"	01°27'00"	91.30
1+47.10	91.00	01°30'00"	88°30'00"	01°30'00"	91.00
1+48.67	90.70	01°33'00"	88°27'00"	01°33'00"	90.70
1+50.24	90.40	01°36'00"	88°24'00"	01°36'00"	90.40
1+51.81	90.10	01°39'00"	88°21'00"	01°39'00"	90.10
1+53.38	89.80	01°42'00"	88°18'00"	01°42'00"	89.80
1+54.95	89.50	01°45'00"	88°15'00"	01°45'00"	89.50
1+56.52	89.20	01°48'00"	88°12'00"	01°48'00"	89.20
1+58.09	88.90	01°51'00"	88°09'00"	01°51'00"	88.90
1+59.66	88.60	01°54'00"	88°06'00"	01°54'00"	88.60
1+61.23	88.30	01°57'00"	88°03'00"	01°57'00"	88.30
1+62.80	88.00	02°00'00"	88°00'00"	02°00'00"	88.00
1+64.37	87.70	02°03'00"	87°57'00"	02°03'00"	87.70
1+65.94	87.40	02°06'00"	87°54'00"	02°06'00"	87.40
1+67.51	87.10	02°09'00"	87°51'00"	02°09'00"	87.10
1+69.08	86.80	02°12'00"	87°48'00"	02°12'00"	86.80
1+70.65	86.50	02°15'00"	87°45'00"	02°15'00"	86.50
1+72.22	86.20	02°18'00"	87°42'00"	02°18'00"	86.20
1+73.79	85.90	02°21'00"	87°39'00"	02°21'00"	85.90
1+75.36	85.60	02°24'00"	87°36'00"	02°24'00"	85.60
1+76.93	85.30	02°27'00"	87°33'00"	02°27'00"	85.30
1+78.50	85.00	02°30'00"	87°30'00"	02°30'00"	85.00
1+80.07	84.70	02°33'00"	87°27'00"	02°33'00"	84.70
1+81.64	84.40	02°36'00"	87°24'00"	02°36'00"	84.40
1+83.21	84.10	02°39'00"	87°21'00"	02°39'00"	84.10
1+84.78	83.80	02°42'00"	87°18'00"	02°42'00"	83.80
1+86.35	83.50	02°45'00"	87°15'00"	02°45'00"	83.50
1+87.92	83.20	02°48'00"	87°12'00"	02°48'00"	83.20
1+89.49	82.90	02°51'00"	87°09'00"	02°51'00"	82.90
1+91.06	82.60	02°54'00"	87°06'00"	02°54'00"	82.60
1+92.63	82.30	02°57'00"	87°03'00"	02°57'00"	82.30
1+94.20	82.00	03°00'00"	87°00'00"	03°00'00"	82.00
1+95.77	81.70	03°03'00"	86°57'00"	03°03'00"	81.70
1+97.34	81.40	03°06'00"	86°54'00"	03°06'00"	81.40
1+98.91	81.10	03°09'00"	86°51'00"	03°09'00"	81.10
1+100.48	80.80	03°12'00"	86°48'00"	03°12'00"	80.80
1+102.05	80.50	03°15'00"	86°45'00"	03°15'00"	80.50
1+103.62	80.20	03°18'00"	86°42'00"	03°18'00"	80.20
1+105.19	79.90	03°21'00"	86°39'00"	03°21'00"	79.90
1+106.76	79.60	03°24'00"	86°36'00"	03°24'00"	79.60
1+108.33	79.30	03°27'00"	86°33'00"	03°27'00"	79.30
1+109.90	79.00	03°30'00"	86°30'00"	03°30'00"	79.00
1+111.47	78.70	03°33'00"	86°27'00"	03°33'00"	78.70
1+113.04	78.40	03°36'00"	86°24'00"	03°36'00"	78.40
1+114.61	78.10	03°39'00"	86°21'00"	03°39'00"	78.10
1+116.18	77.80	03°42'00"	86°18'00"	03°42'00"	77.80
1+117.75	77.50	03°45'00"	86°15'00"	03°45'00"	77.50
1+119.32	77.20	03°48'00"	86°12'00"	03°48'00"	77.20
1+120.89	76.90	03°51'00"	86°09'00"	03°51'00"	76.90
1+122.46	76.60	03°54'00"	86°06'00"	03°54'00"	76.60
1+124.03	76.30	03°57'00"	86°03'00"	03°57'00"	76.30
1+125.60	76.00	04°00'00"	86°00'00"	04°00'00"	76.00
1+127.17	75.70	04°03'00"	85°57'00"	04°03'00"	75.70
1+128.74	75.40	04°06'00"	85°54'00"	04°06'00"	75.40
1+130.31	75.10	04°09'00"	85°51'00"	04°09'00"	75.10
1+131.88	74.80	04°12'00"	85°48'00"	04°12'00"	74.80
1+133.45	74.50	04°15'00"	85°45'00"	04°15'00"	74.50
1+135.02	74.20	04°18'00"	85°42'00"	04°18'00"	74.20
1+136.59	73.90	04°21'00"	85°39'00"	04°21'00"	73.90
1+138.16	73.60	04°24'00"	85°36'00"	04°24'00"	73.60
1+139.73	73.30	04°27'00"	85°33'00"	04°27'00"	73.30
1+141.30	73.00	04°30'00"	85°30'00"	04°30'00"	73.00
1+142.87	72.70	04°33'00"	85°27'00"	04°33'00"	72.70
1+144.44	72.40	04°36'00"	85°24'00"	04°36'00"	72.40
1+146.01	72.10	04°39'00"	85°21'00"	04°39'00"	72.10
1+147.58	71.80	04°42'00"	85°18'00"	04°42'00"	71.80
1+149.15	71.50	04°45'00"	85°15'00"	04°45'00"	71.50
1+150.72	71.20	04°48'00"	85°12'00"	04°48'00"	71.20
1+152.29	70.90	04°51'00"	85°09'00"	04°51'00"	70.90
1+153.86	70.60	04°54'00"	85°06'00"	04°54'00"	70.60
1+155.43	70.30	04°57'00"	85°03'00"	04°57'00"	70.30
1+157.00	70.00	05°00'00"	85°00'00"	05°00'00"	70.00

**MOLSSON ASSOCIATES**