



Hall County Regional Planning Commission

Wednesday, October 04, 2006
Regular Meeting

Item J3

CJL Subdivision

CJL Subdivision is located north of 13th St. between Burwick Rd. and 110th Rd., Hall County, Nebraska. (1 lot)

Staff Contact: Chad Nabity

September 20, 2006

Dear Members of the Board:

RE: Final Plat – CJL Subdivision

For reasons of Section 19-923 Revised Statutes of Nebraska, as amended, there is herewith submitted a final plat of CJL Subdivision, located south of Capital Ave. W, between Burwick Road and 110th Road, Hall County Nebraska.

This subdivision proposes to create 1 lot on a tract of land comprising a part of the Northeast Quarter (NE1/4) of Section Nine (9), Township Eleven (11) North, Range Eleven (11) West of the 6th P.M., Hall County, Nebraska. This subdivision consists of 3.730 acres, more or less.

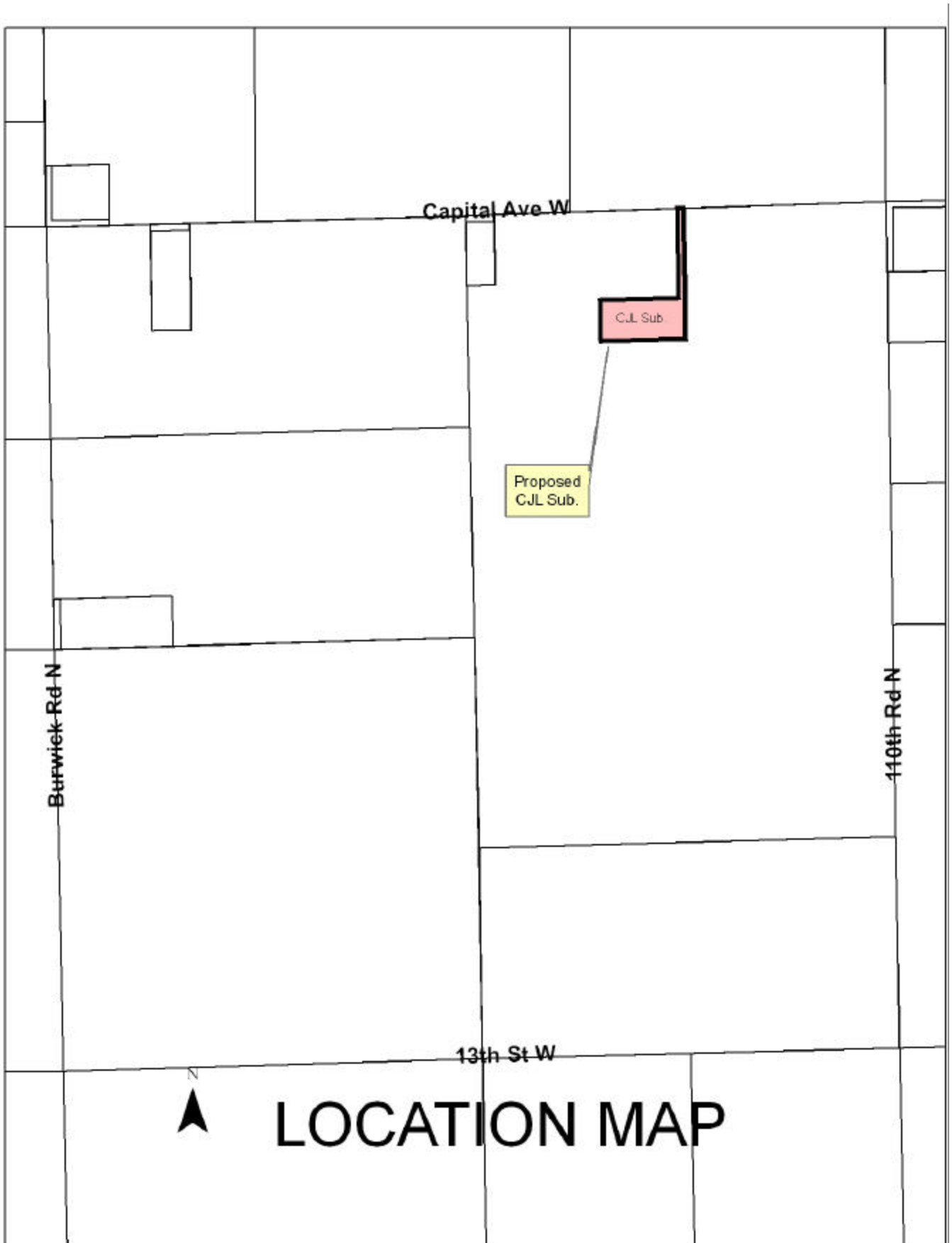
You are hereby notified that the Regional Planning Commission will consider this final plat at the next meeting that will be held at 6:00 on October 4, 2006, in the Council Chambers located in Grand Island's City Hall.

Sincerely,

Chad Nabity, AICP
Planning Director

cc: County Clerk
County Attorney
County Public Works Director
County Building Director
Manager of Postal Operations
Benjamin & Associates

This letter was sent to the following School Districts 1R, 2, 3, 8, 12, 16, 19, 82, 83, 100, 126.



Capital Ave W

C.J. Sub.

Proposed
CJL Sub.



LOCATION MAP

